



Certificate of analysis

SFC870-03-08

Operator: Jane Vowles

Date: 07/09/2015

Supervisor: Sally Cowley

Date: 01.03.2016

Signature:

SACowley

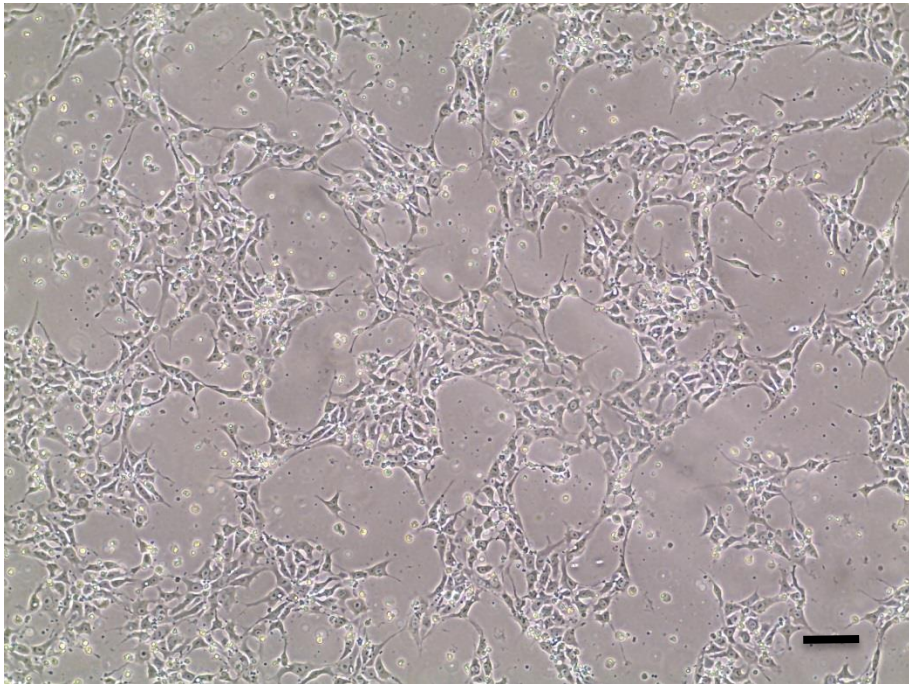
Source of fibroblasts and reprogramming information

- SF870 from Luebeck
- Reprogrammed at UOXF JMSCF
- Reprogrammed on 21/01/2015 at passage 5
- Cytotune v2 WP3 SOP10

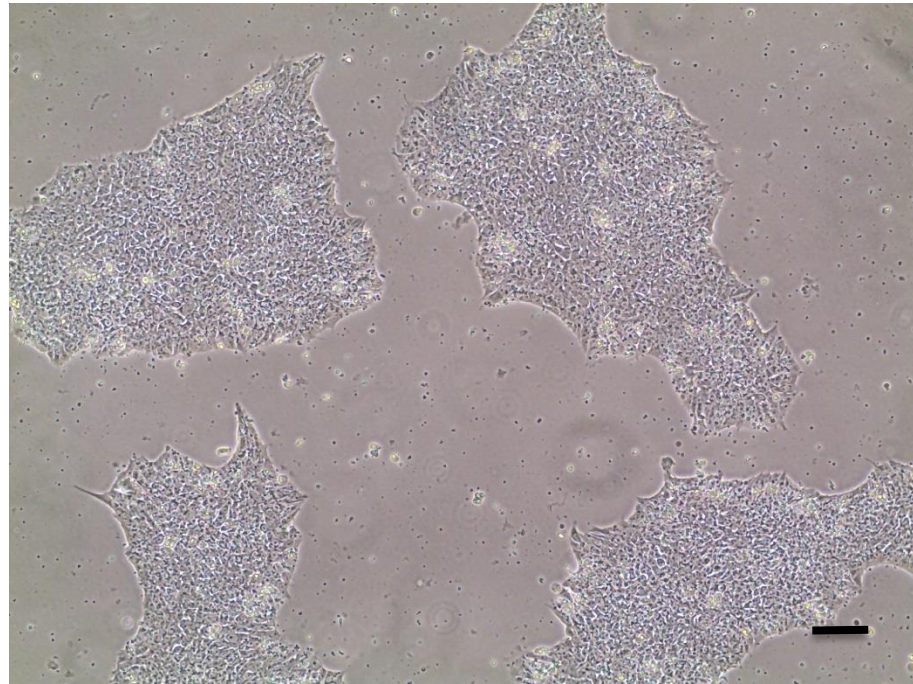
Viability post-thaw and Morphology according to SOP19 passage 19

- Cell count immediately post-thaw 2.5×10^6
- Viability immediately post-thaw 85%
- Photo post-thaw (scale bar = $100\mu\text{m}$):

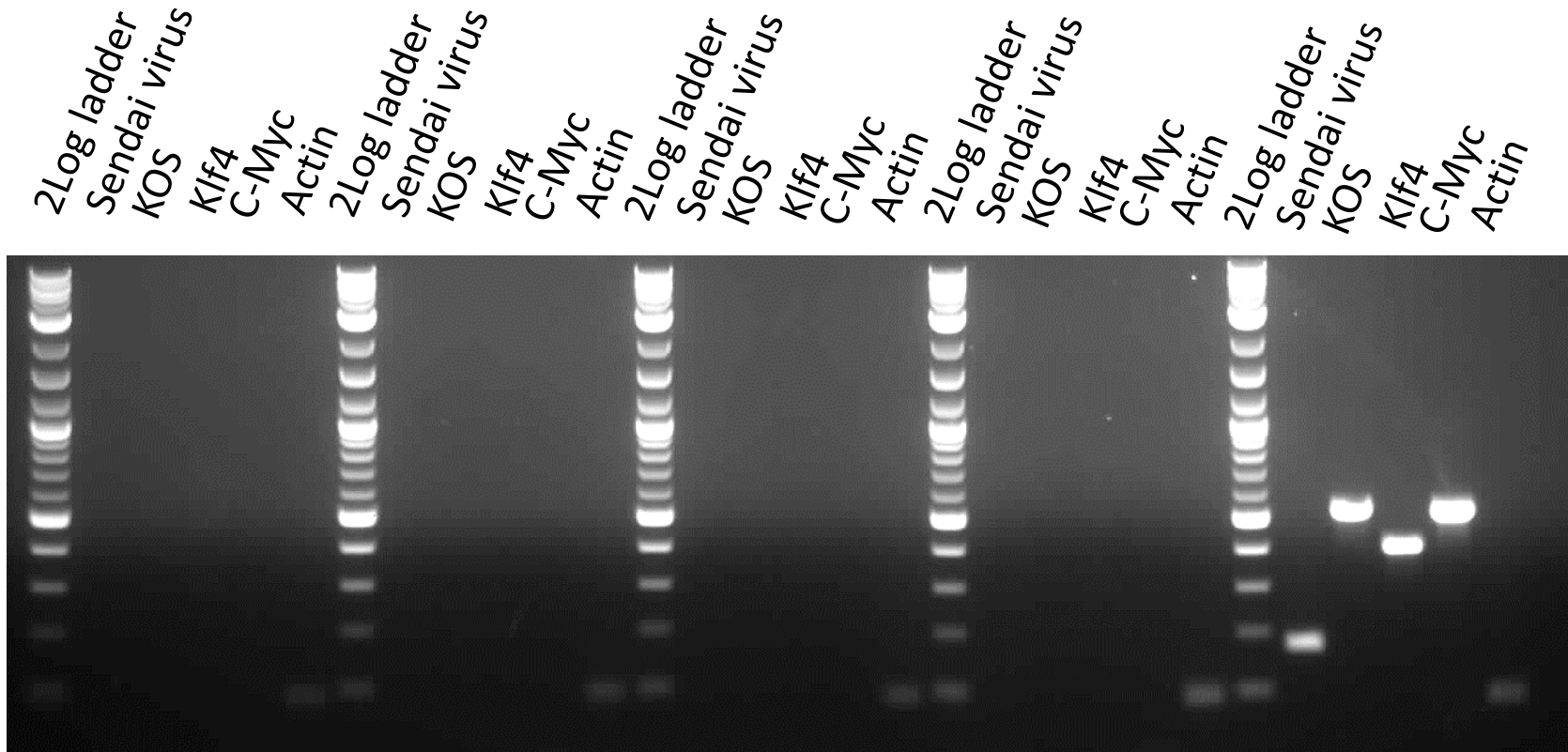
24 hour



Low density plating day 4



Sendai clearance: according to WP3 SOP15 undetectable at passage 19



SFC866-03-02

SFC866-03-06

SFC870-03-06

SFC870-03-08

+ control

Product sizes: SeV 181bp; KOS 528bp; SeV-Klf 410bp; SeV-Myc 532bp; Actin 92bp

Mycoplasma Test:

According to MycoAlert Lonza LT07-318 undetectable at passage 19

Sample	Clone	Passage number	Initial	Reading 1	Reading 2	Ratio/Status
+ve control				7.64	199.10	26.07
-ve control				9.31	0.60	0.06
11	SFC870-03-08	p19	JV	4.11	1.21	0.29

Results mean

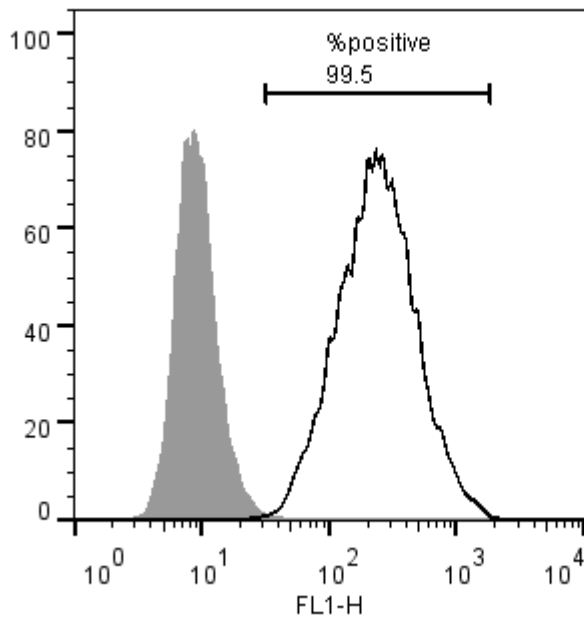
Ratio **0 - 0.999** negative for mycoplasma

Ratio **1 – 1.3** Borderline Result (retest required)

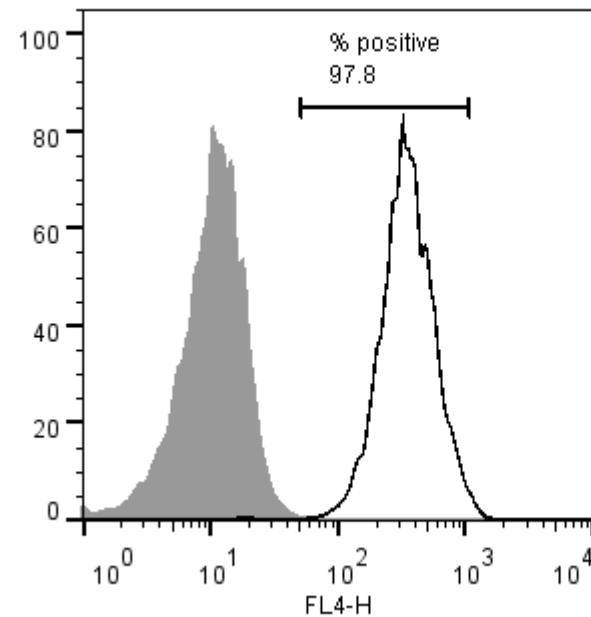
Ratio above **1.3** positive for mycoplasma

Flow cytometric analysis according to WP3 SOP 20 and 21 passage p19

Tra-1-60:



NANOG:



SNP analysis

according to WP3 SOP Preparation of DNA and RNA samples for Illumina arrays

- Passage 19
- Identity to parent fibroblasts confirmed
- Karyotype abnormalities: none detected
- For details and raw data see StemDB