

Certificate of analysis

SFC043-03-13

Signature: Katja Gassner Date: 15.12.2014

Supervisor signature: Lyle Armstrong

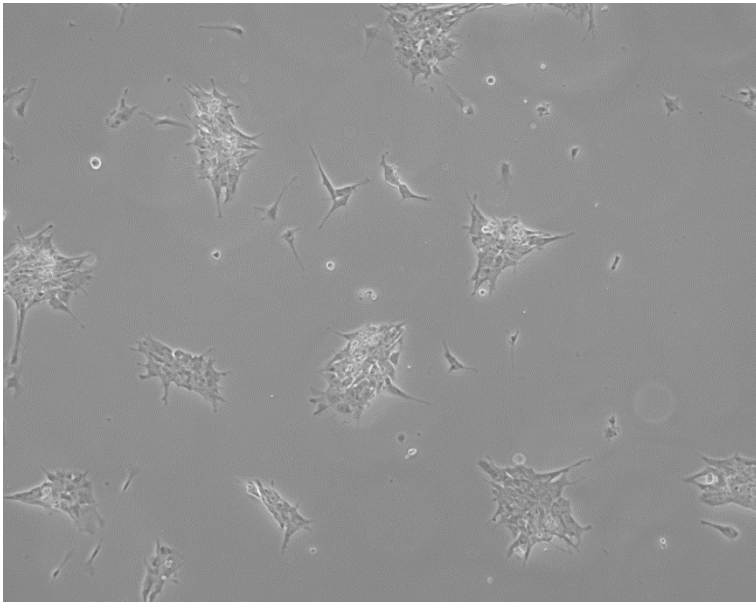
Date: 15.12.2014

Source of fibroblasts and reprogramming information

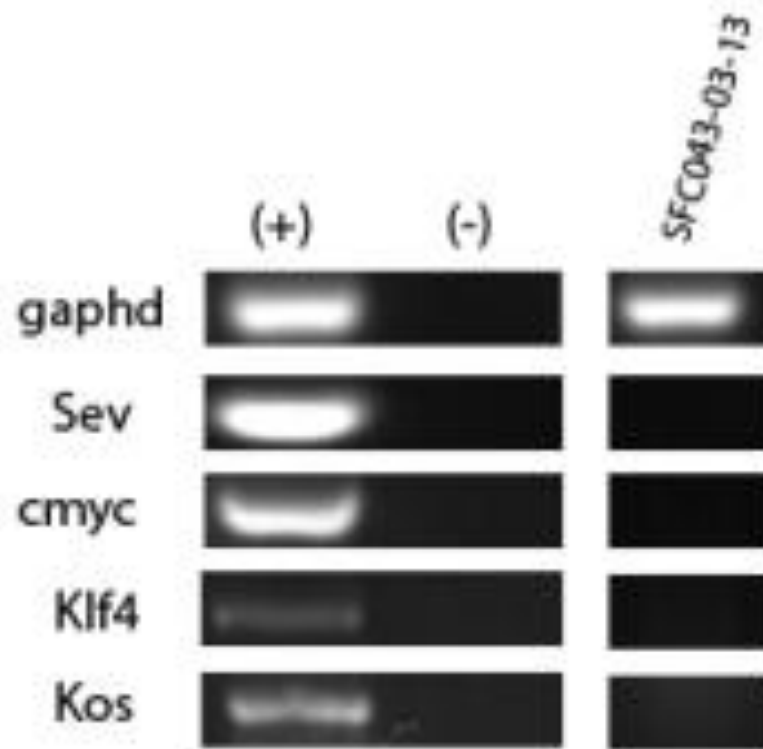
- SF043, Alzheimer's disease patient, biopsy taken in UOXF
- Reprogrammed at UNEW
- Reprogrammed on 04/02/2014 at passage 6
- Cytotune 2

Viability post-thaw and Morphology according to SOP19 passage 13

- Cell count immediately post-thaw 2.05×10^6
- Viability immediately post-thaw 69%
- Photo at 24h post-thaw:



Sendai clearance:
according to WP3 SOP20
undetectable at passage 13



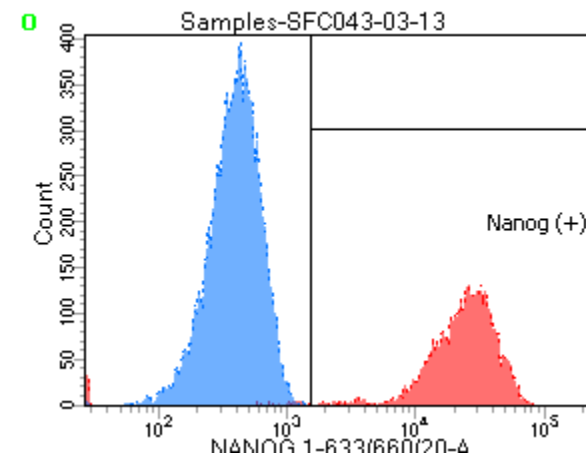
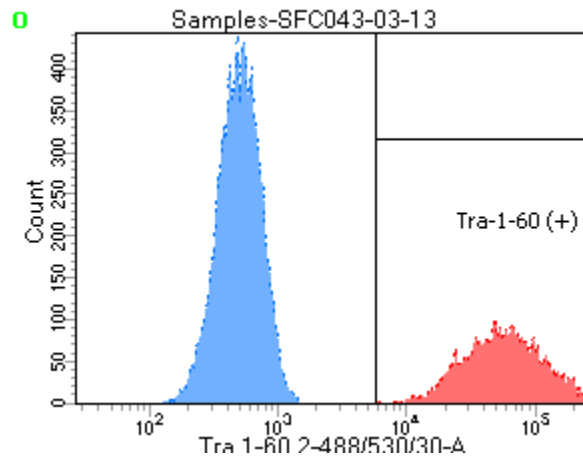
Mycoplasma test:

According to MycoAlert Lonza LT07-318

Undetectable at passage 13

Owner	KG					
Date	08/12/2014					
Cell name	SFC043-03-13					
A	0.0421					
B	0.0215					
B/A	0.510688836					
> 1.2		Mycoplasma Contaminated			Positive Control	Negative Control
0.9-1.2		Status Unknown - Restest within 24 hours			0.0341	0.1004
0-0.9		Mycoplasma Free			2.243	0.0068
					65.7771261	0.067729084

Flow cytometric analysis according to WP3 SOP 20 and 21 passage 13



Tube: SFC043-03-13

Population	#Events	%Parent	%Total
■ All Events	20,000	####	100.0
■ Cells	4,674	23.4	23.4
☒ Tra-1-60 (+)	4,625	99.0	23.1
☒ Nanog (+)	4,515	96.6	22.6
■ Samples/katja Un/All Events	20,000	####	100.0
■ Samples/katja Un/P1	11,422	57.1	57.1

SNP analysis

according to WP3 SOP Preparation of DNA and RNA samples for Illumina arrays

- Passage 13
- Identity to parent fibroblasts confirmed
- Karyotype abnormalities: none detected
- For details and raw data see StemDB

Comment

- Slow cell growth with nice morphology, up to 6 days before confluent
- Sensitive to Accutase freezing