



# Certificate of analysis

SFC846-03-02

Operator: C Browne

Date: 01/08/2017

Supervisor: Sally Cowley Date: 25/02/2018

Signature:

*SACowley*

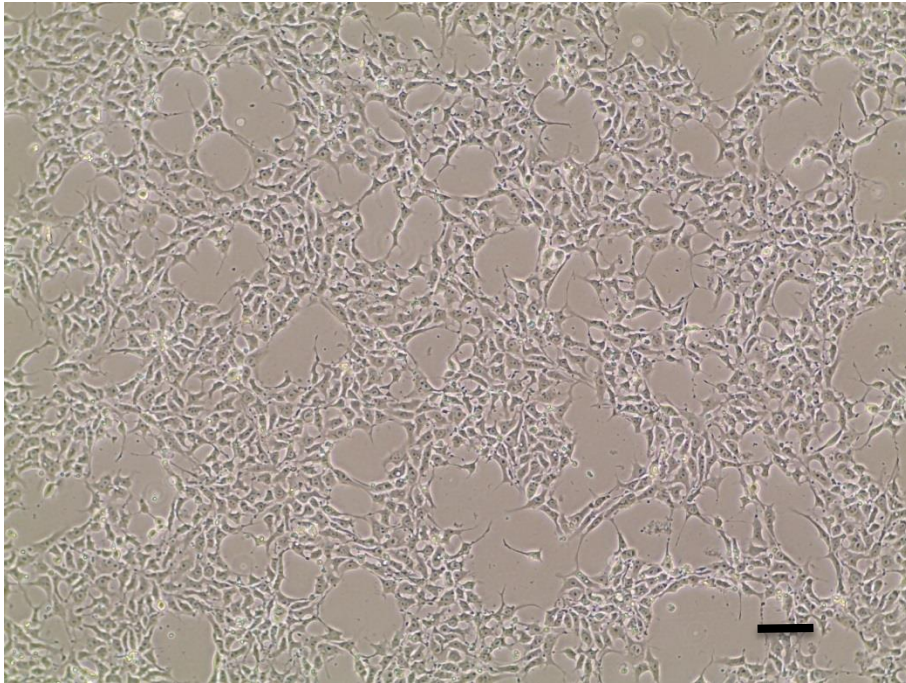
# Source of fibroblasts and reprogramming information

- SF846 from Oxford  
15/07/14
- Reprogrammed at UOXF-S
- Reprogrammed on 17/08/16 at passage 3/OP
- Cytotune v2 WP3 SOP10

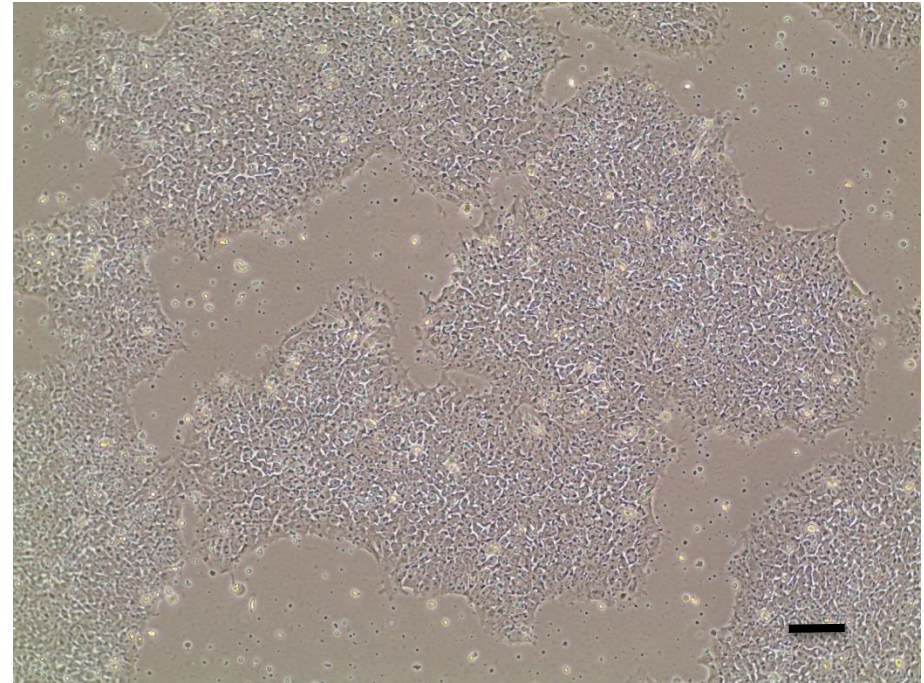
# Viability post-thaw and Morphology according to SOP19 passage 10

- Cell count immediately post-thaw  $1.76 \times 10^6$
- Viability immediately post-thaw 84.95%
- Photo at 24h and day 4 post-thaw (scale bar =  $100\mu\text{m}$ ):

24h post-thaw 80% plated

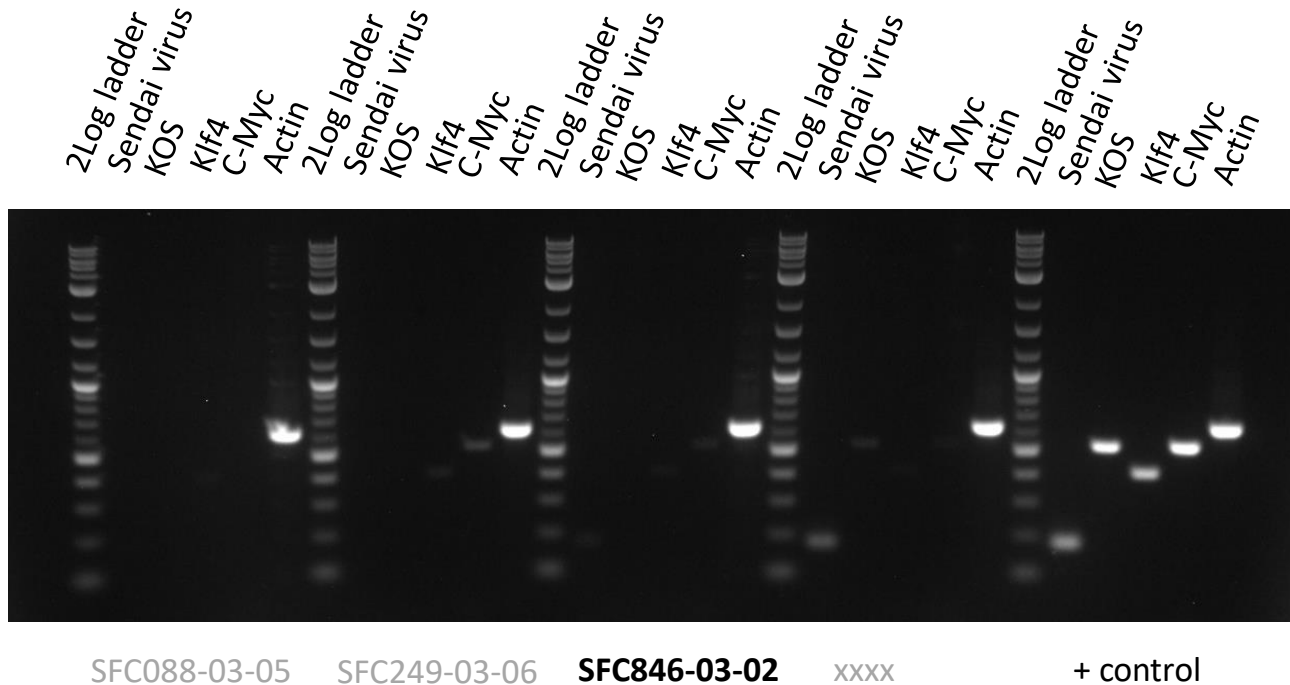


Day 4 post-thaw 20% plated



# Sendai Cytotune 2 clearance: according to WP3 SOP1

very faint residual myc-virus detected at passage 10 –  
recommend retesting upon receipt and further expansion of  
cells at passage 13+



Product sizes: SeV 181bp; KOS 528bp; SeV-Klf 410bp; SeV-Myc 532bp; Actin 623bp

# Mycoplasma Test:

## According to MycoAlert Lonza LT07-318 undetectable at passage 10

Sample	Clone	Passage number	Initial	Reading 1	Reading 2	Ratio/Status
+ve control				6.0875	31.66	<b>5.20</b>
-ve control				11.13	1.821	<b>0.16</b>
6	SFC846-03-02	p10	CB	5.029	2.672	<b>0.53</b>

Results mean

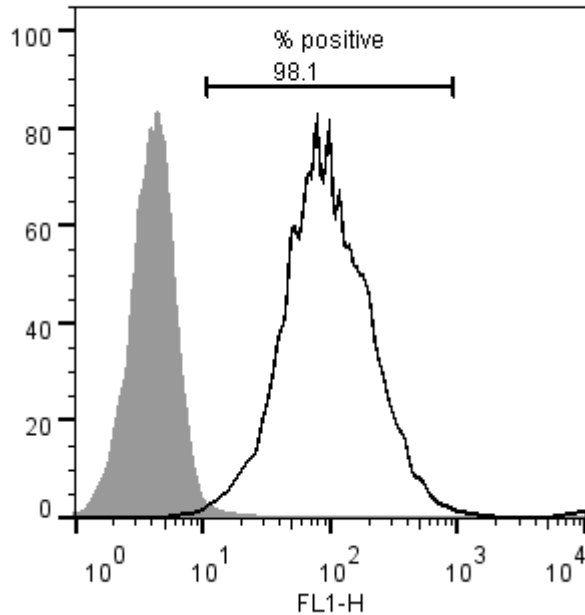
Ratio **0 - 0.999** negative for mycoplasma

Ratio **1 – 1.3** Borderline Result (retest required)

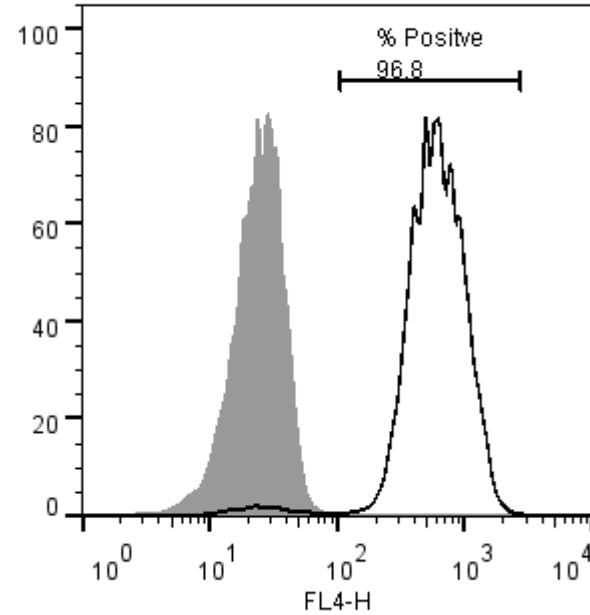
Ratio above **1.3** positive for mycoplasma

# Flow cytometric analysis according to WP3 SOP 20 and 21 passage 10

Tra-1-60:



NANOG:



# SNP analysis

according to WP3 SOP Preparation of DNA and RNA samples for Illumina arrays

- Passage 10
- Identity to parent fibroblasts confirmed by Genomestudio scatterplot
- No gross karyotype abnormalities detected by Karyostudio

SF846 [714] X Raw vs SFC846-03-02 [890] X Raw

