



# Certificate of analysis

SFC080-03-04

Operator: J Vowles

Date: 18/04/17

Supervisor: Sally Cowley

Date: 25/02/2018

Signature:

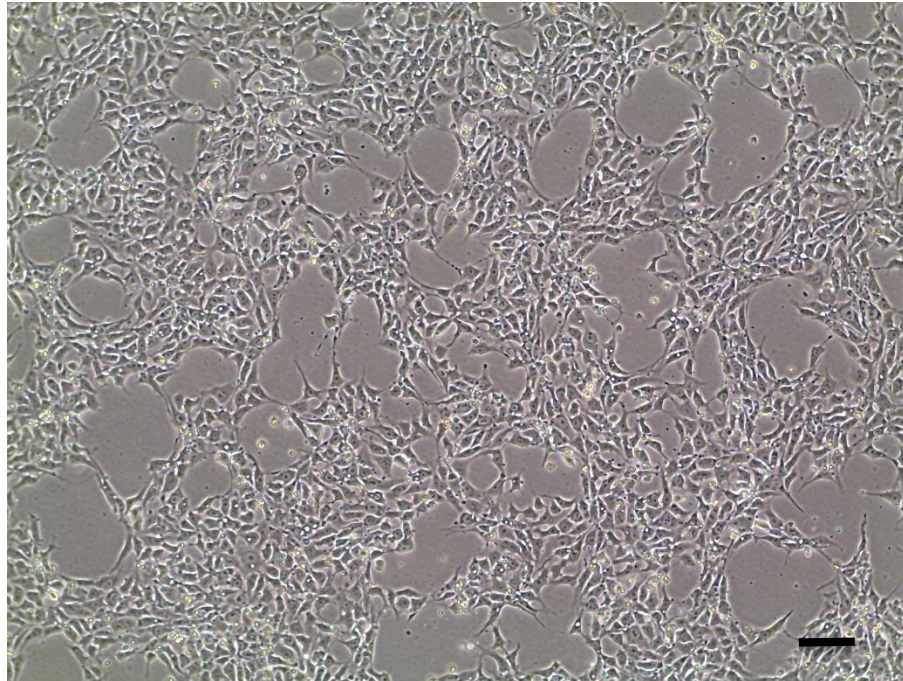
*SACowley*

# Source of fibroblasts and reprogramming information

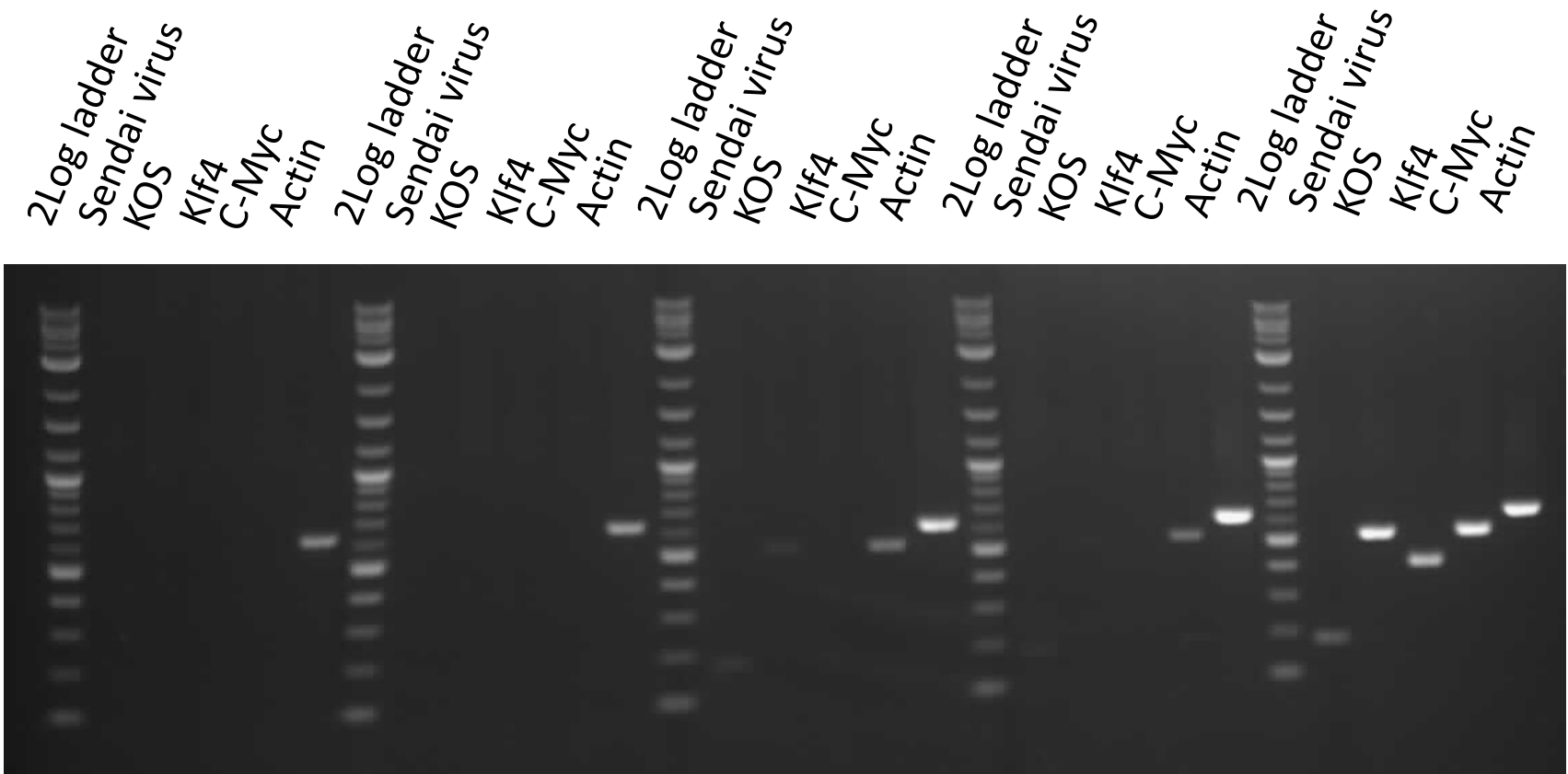
- SF080 from Luebeck 19/01/2016
- Reprogrammed at UOXF-S
- Reprogrammed on 11/07/2016 at passage 5/JV
- Cytotune v2 WP3 SOP10

# Viability post-thaw and Morphology according to SOP19 passage 10

- Cell count immediately post-thaw  $2.5 \times 10^6$
- Viability immediately post-thaw 88%
- Photo at 24h post-thaw (scale bar =  $100\mu\text{m}$ ):



# Sendai clearance: according to WP3 SOP15 undetectable at passage 9



**SFC080-03-04**

SFC844-03-12

SFC846-03-03

SFC847-03-05

+ control

Product sizes: SeV 181bp; KOS 528bp; SeV-Klf 410bp; SeV-Myc 532bp; Actin 623bp

# Mycoplasma Test:

## According to MycoAlert Lonza LT07-318 undetectable at passage 10

Sample	Clone	Passage number	Initial	Reading 1	Reading 2	Ratio/Status
+ve control				6.347	129.8	20.45
-ve control				7.934	0.921	0.12
5	SFC080-03-04	p10	JV	2.198	0.974	0.44

Results mean

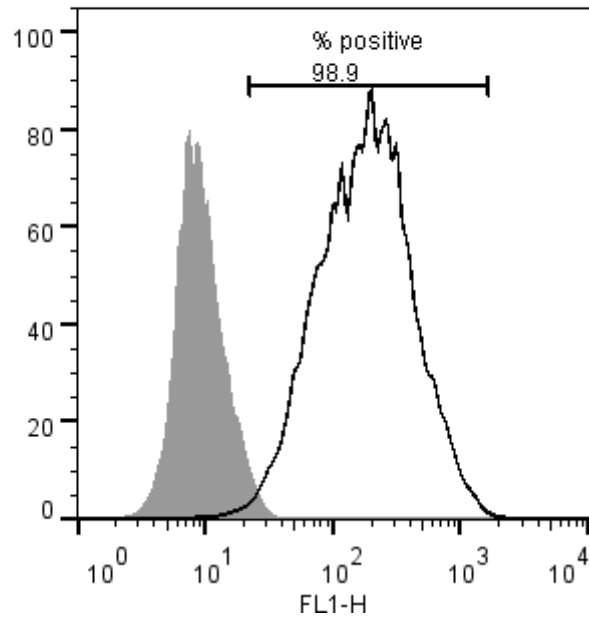
Ratio **0 - 0.999** negative for mycoplasma

Ratio **1 – 1.3** Borderline Result (retest required)

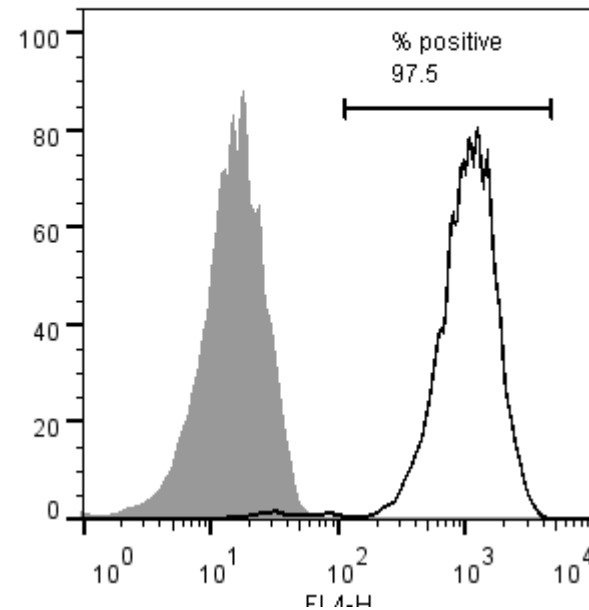
Ratio above **1.3** positive for mycoplasma

# Flow cytometric analysis according to WP3 SOP 20 and 21 passage 10

Tra-1-60:



NANOG:



# SNP analysis

according to WP3 SOP Preparation of DNA and RNA samples for Illumina arrays

- Passage p10
- Identity to parent fibroblasts confirmed
- Karyotype abnormalities: none detected
- For details and raw data see StemDB