



Certificate of analysis

SFC848-03-06

Operator: Cathy Browne

Date: 07/07/14

Supervisor: Sally Cowley

Date: 16.09.2015

Signature:

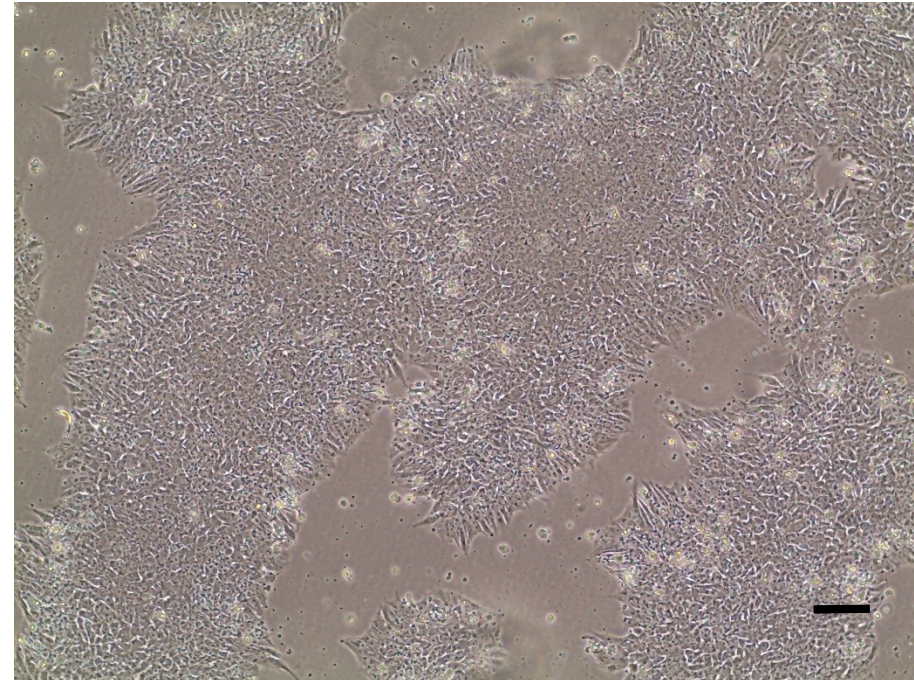
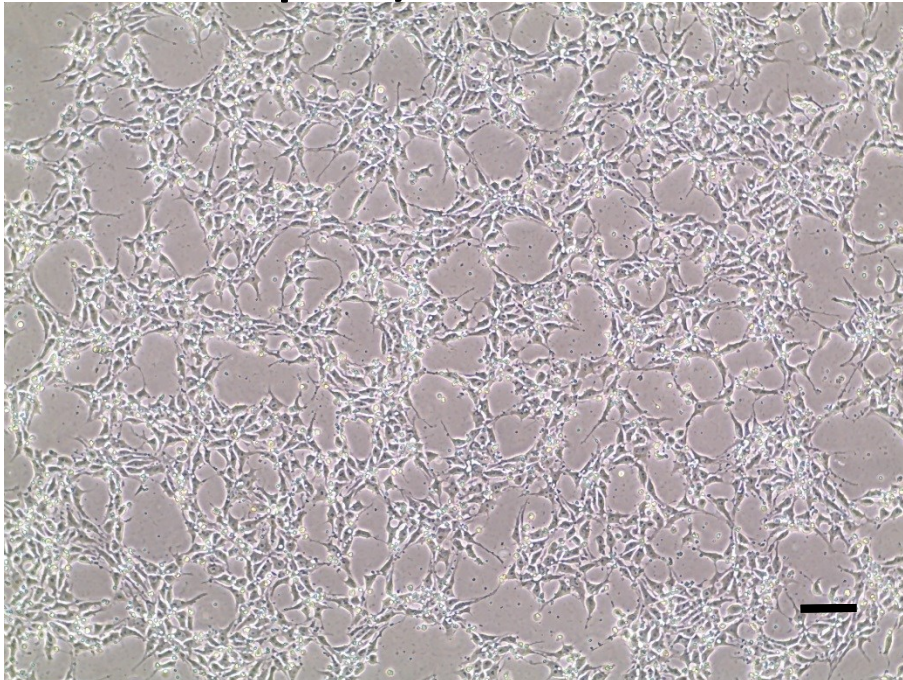
SACowley

Source of fibroblasts and reprogramming information

- SF848 from Oxford University Hospitals
05/10/12
- Reprogrammed at UOXF JMSCF AB
- Reprogrammed on 14/08/14 at passage 3
- Cytotune v1 WP3 SOP10

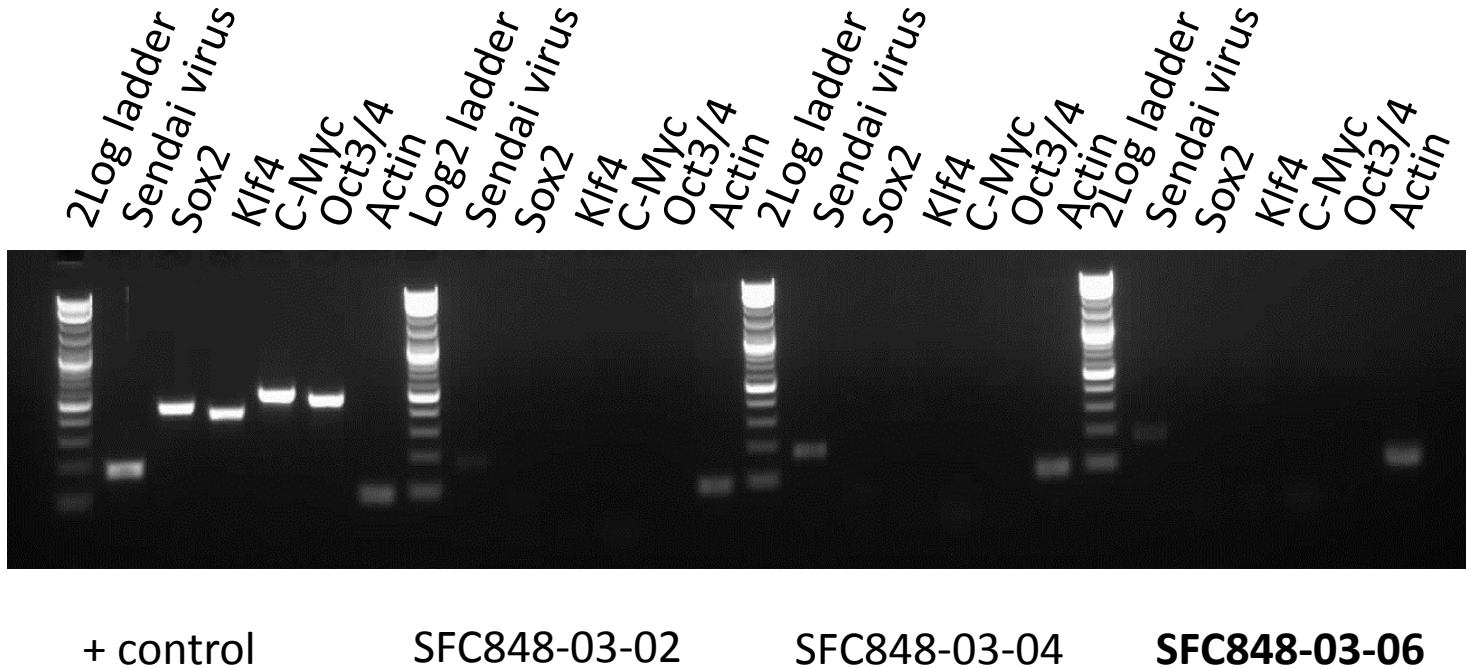
Viability post-thaw and Morphology according to SOP19 passage p21

- Cell count immediately post-thaw 3.67×10^6
- Viability immediately post-thaw 86.4%
- Photo at 24h & day7 post-thaw (scale bar = $100\mu\text{m}$):



Sendai clearance:
according to WP3 SOP15
undetectable at passage 21

except for some residual SeV backbone



Product sizes: SeV 181bp; SeV-Sox 451bp; SeV-Klf 410bp; SeV-Myc 532bp; SeV-Oct 483bp; Actin 92bp

Mycoplasma Test:

According to MycoAlert Lonza LT07-318 undetectable at passage 21

| Sample | Clone | Passage number | Initial | Reading 1 | Reading 2 | Ratio/Status |
|-------------|--------------|----------------|---------|-----------|-----------|--------------|
| +ve control | | | | 8.539 | 88.04 | 10.31 |
| -ve control | | | | 9.475 | 0.883 | 0.09 |
| 3 | SFC848-03-06 | p21 | CB | 2.953 | 0.948 | 0.32 |

Results mean

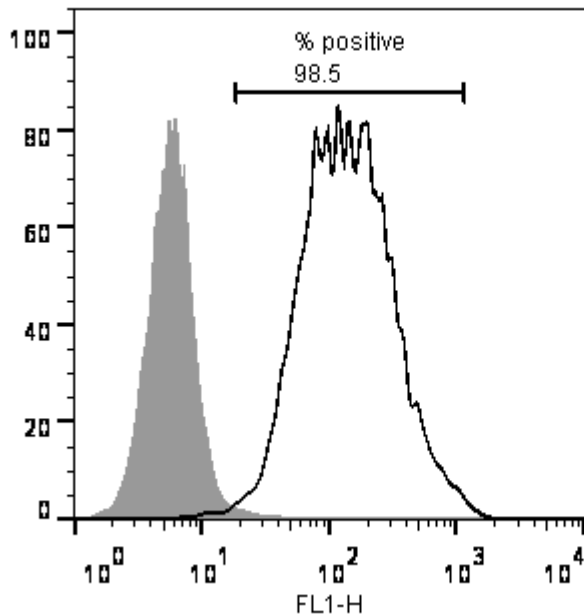
Ratio **0 - 0.999** negative for mycoplasma

Ratio **1 – 1.3** Borderline Result (retest required)

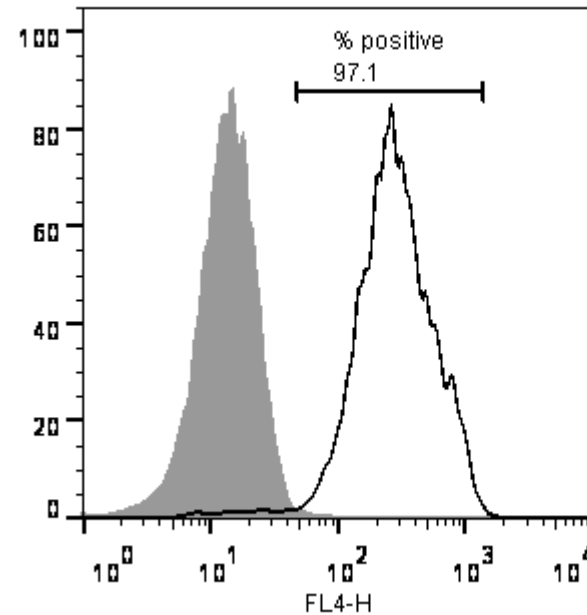
Ratio above **1.3** positive for mycoplasma

Flow cytometric analysis according to WP3 SOP 20 and 21 passage p21

Tra-1-60:



NANOG:



SNP analysis

according to WP3 SOP Preparation of DNA and RNA samples for Illumina arrays

- Passage p21
- Identity to parent fibroblasts confirmed
- Karyotype abnormalities: none detected
- For details and raw data see StemDB