



Certificate of analysis

SFC843-03-09

Operator: Jane Vowles

Date: 25/01/2017

Supervisor: Sally Cowley

Date: 14/07/2017

Signature:

SACowley

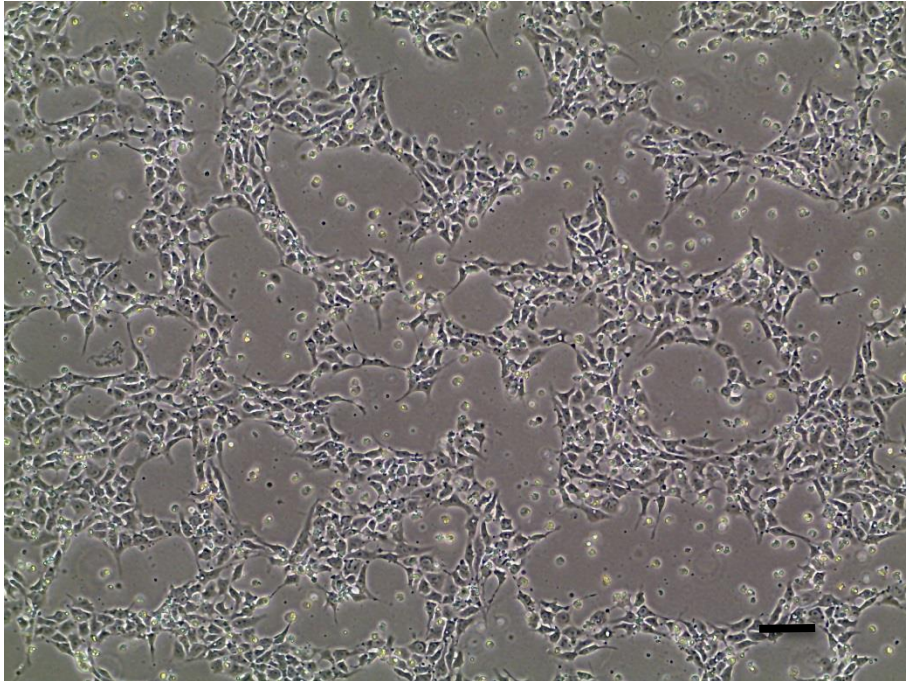
Source of fibroblasts and reprogramming information

- SF843 from Oxford 15/07/14
- Reprogrammed at UOXF-S
- Reprogrammed on 04/08/2016 at passage 4/JV
- Cytotune v1 WP3 SOP10

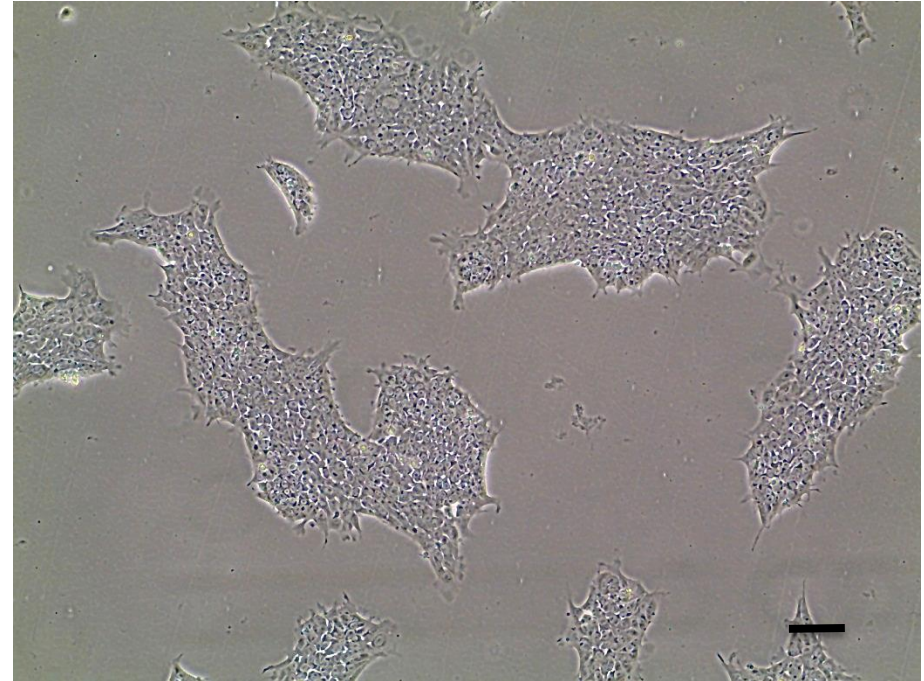
Viability post-thaw and Morphology according to SOP19 passage 10

- Cell count immediately post-thaw 3.7×10^6
- Viability immediately post-thaw 85%
- Photo at 24h and day 3 post-thaw (scale bar = $100\mu\text{m}$):

24h post-thaw 80% plated

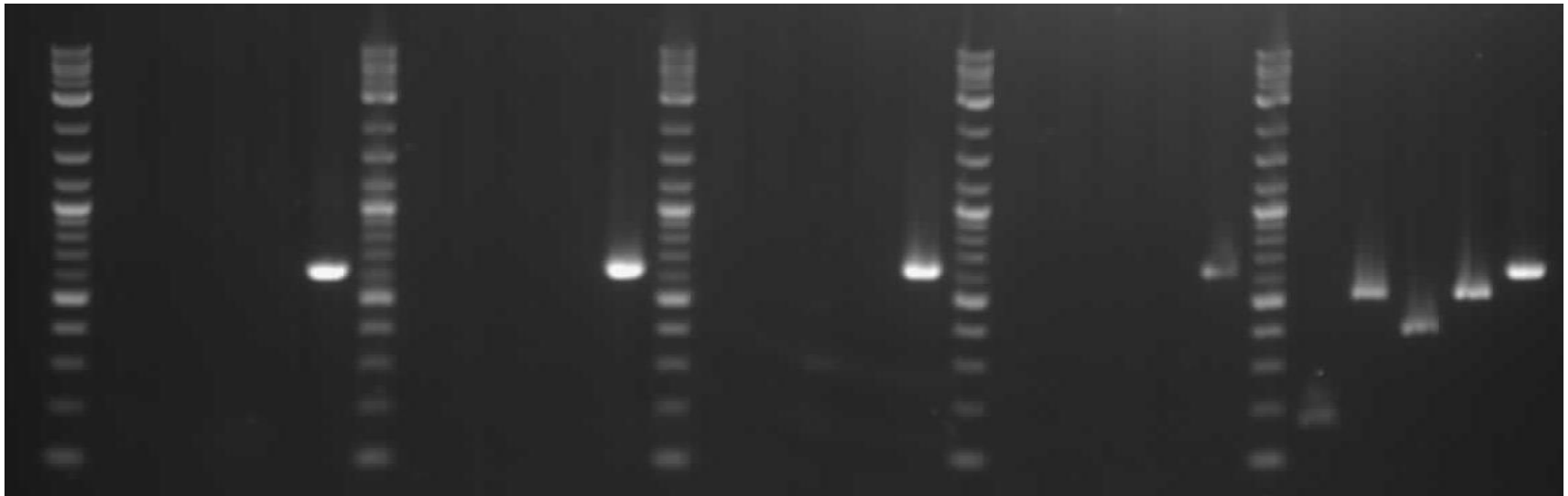


Day 3 post-thaw 20% plated



Sendai clearance: according to WP3 SOP15 nondetectable at passage 10

2Log ladder
Sendai virus
KOS
Klf4
C-Myc
Actin
2Log ladder
Sendai virus
KOS
Klf4
C-Myc
Actin
2Log ladder
Sendai virus
KOS
Klf4
C-Myc
Actin
2Log ladder
Sendai virus
KOS
Klf4
C-Myc
Actin
2Log ladder
Sendai virus
KOS
Klf4
C-Myc
Actin



SFC866-03-05

SFC069-03-01

SFC139-03-06

SFC843-03-09

+ control

Product sizes: SeV 181bp; KOS 528bp; SeV-Klf 410bp; SeV-Myc 532bp; Actin 623bp

Mycoplasma Test:

According to MycoAlert Lonza LT07-318 undetectable at passage 10

Sample	Passage number	Initial	Reading 1	Reading 2	Ratio/Status
+ve control			5.477	116.6	21.29
-ve control			6.458	1.612	0.25
SFC843-03-09	p10	JV	1.992	0.96	0.48
SFC139-03-06	p10	JV	2.598	1.022	0.39
SFC069-03-01	p12	JV	1.552	0.746	0.48
SFC061-03-07	p11	JV	1.591	0.845	0.53

Results mean

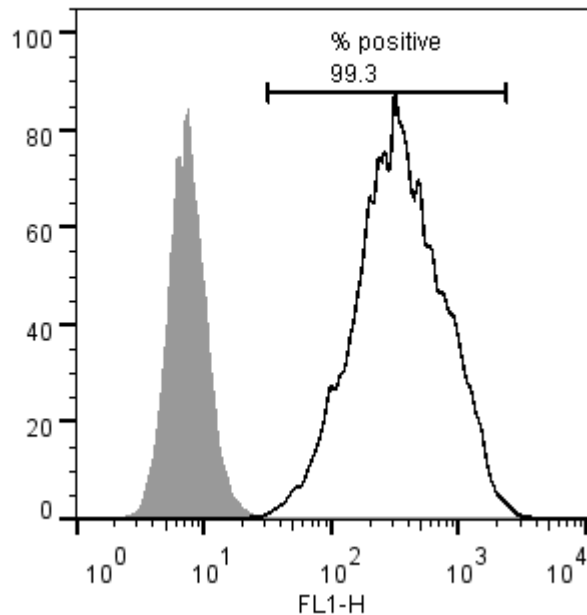
Ratio **0 - 0.999** negative for mycoplasma

Ratio **1 – 1.3** Borderline Result (retest required)

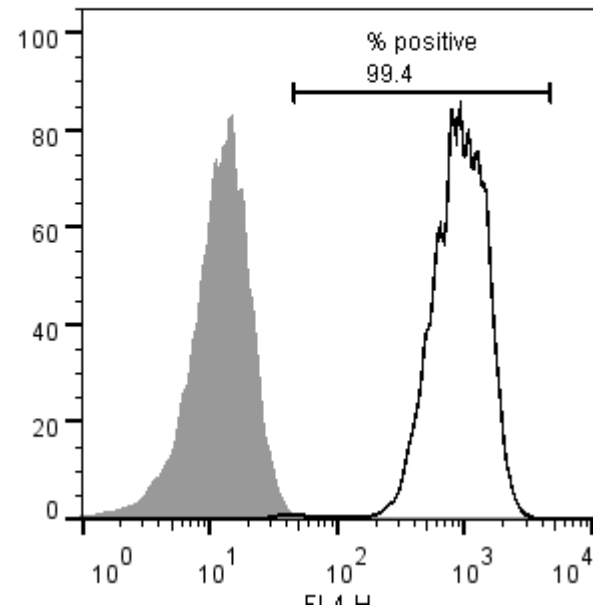
Ratio above **1.3** positive for mycoplasma

Flow cytometric analysis according to WP3 SOP 20 and 21 passage 10

Tra-1-60:



NANOG:



SNP analysis

according to WP3 SOP Preparation of DNA and RNA samples for Illumina arrays

- Passage 10
- Identity to parent fibroblasts confirmed
- Karyotype abnormalities: none detected
- For details and raw data see StemDB