



Certificate of analysis

SFC081-03-07

Operator: Jane Vowles

Date: 13/01/15

Supervisor: Sally Cowley

Date: 04.09.2015

Signature:

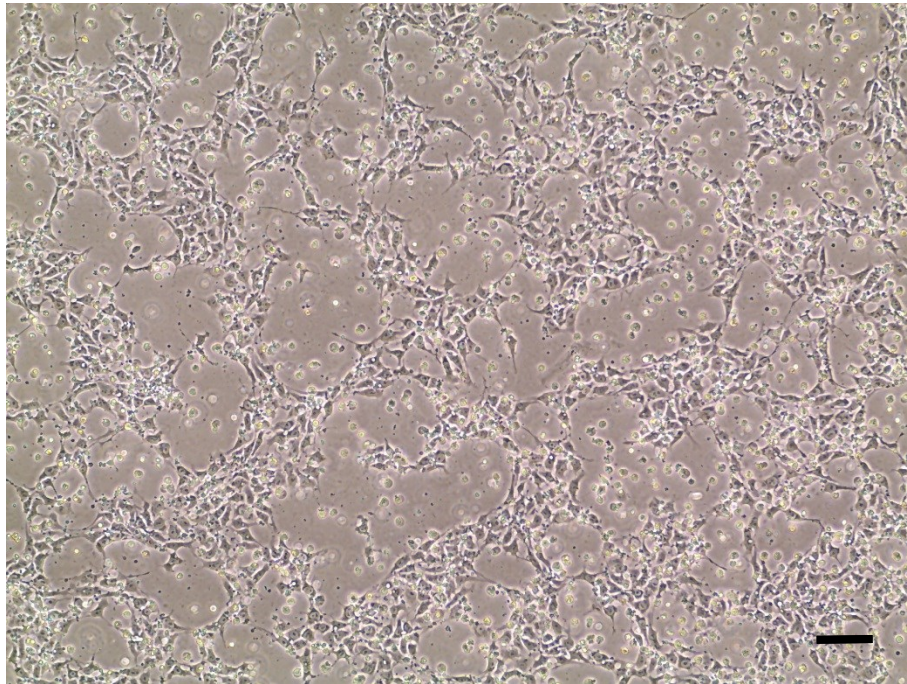
SACowley

Source of fibroblasts and reprogramming information

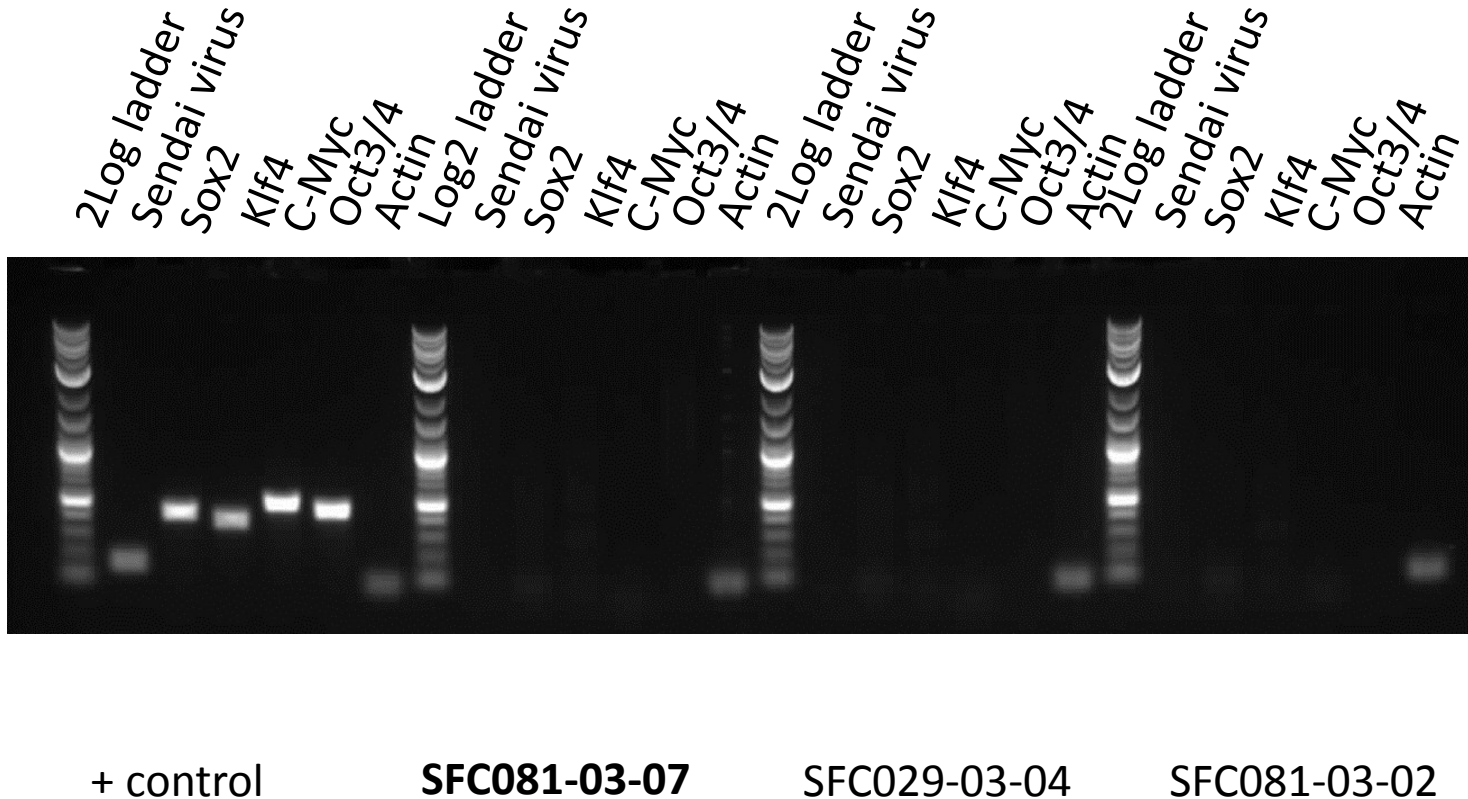
- SF081 from Luebeck
- Reprogrammed at UOXF JMSCF
- Reprogrammed on 05/06/2014 at passage 3
- Cytotune v1 WP3 SOP10

Viability post-thaw and Morphology according to SOP19 passage no.18

- Cell count immediately post-thaw 2.4×10^6
- Viability immediately post-thaw 79%
- Photo at 24h post-thaw (scale bar = $100\mu\text{m}$):



Sendai clearance: according to WP3 SOP15 undetectable at passage 18



Product sizes: SeV 181bp; SeV-Sox 451bp; SeV-Klf 410bp; SeV-Myc 532bp; SeV-Oct 483bp; Actin 92bp

Mycoplasma Test:

According to MycoAlert Lonza LT07-318 undetectable at passage 18

Sample	Passage	Initials	Reading 1	Reading 2	Ratio / Status
+ve Control			5.627	156.59	27.83
-ve Control			7.262	0.671	0.092
SFC 081-03-07	p18	CB	2.584	1.076	0.416

Results mean

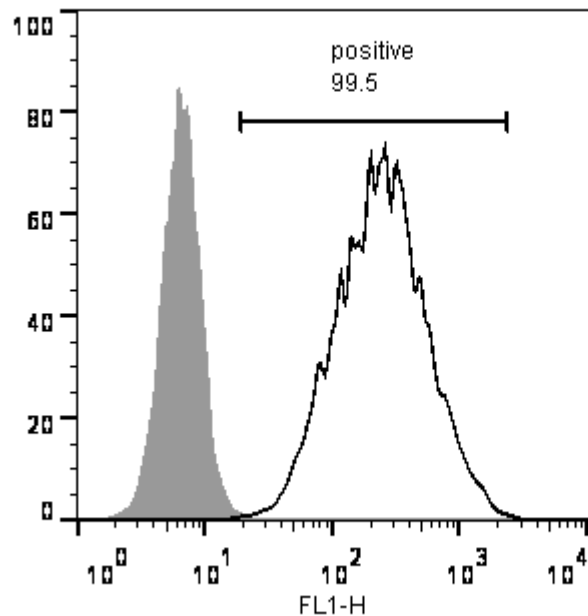
Ratio **0 - 0.999** negative for mycoplasma

Ratio **1 – 1.3** Borderline Result (retest required)

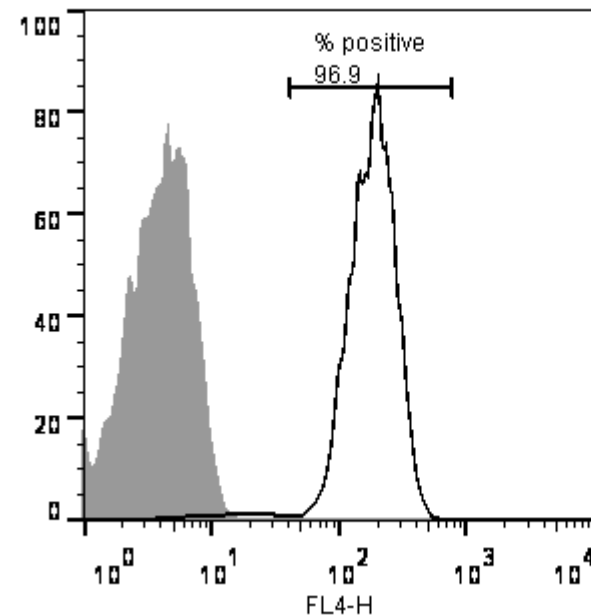
Ratio above **1.3** positive for mycoplasma

Flow cytometric analysis according to WP3 SOP 20 and 21 passage 18

Tra-1-60:



NANOG:



SNP analysis

according to WP3 SOP Preparation of DNA and RNA samples for Illumina arrays

- Passage 18
- Identity to parent fibroblasts confirmed
- Karyotype abnormalities: none detected compared to fibroblasts
- For details and raw data see StemDB