



# Certificate of analysis

SFC139-03-06

Operator: Jane Vowles

Date: 25/01/2017

Supervisor: Sally Cowley

Date: 25/02/2018

Signature:

*SACowley*

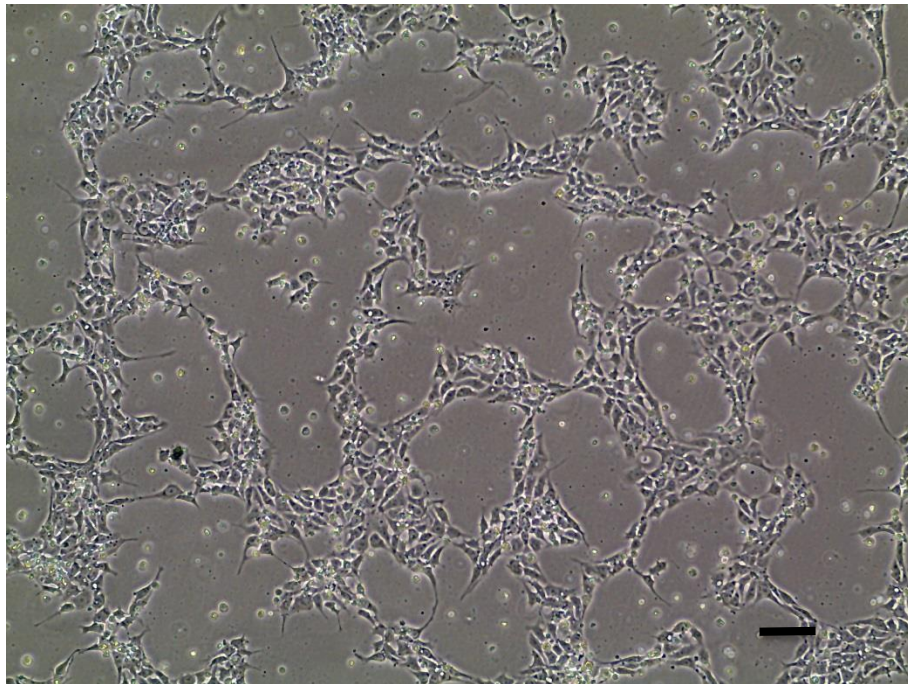
# Source of fibroblasts and reprogramming information

- SF139 from UOXF
- Reprogrammed at UOXF-S
- Reprogrammed on 04/08/2016 at passage 4/JV
- Cytotune v1 WP3 SOP10

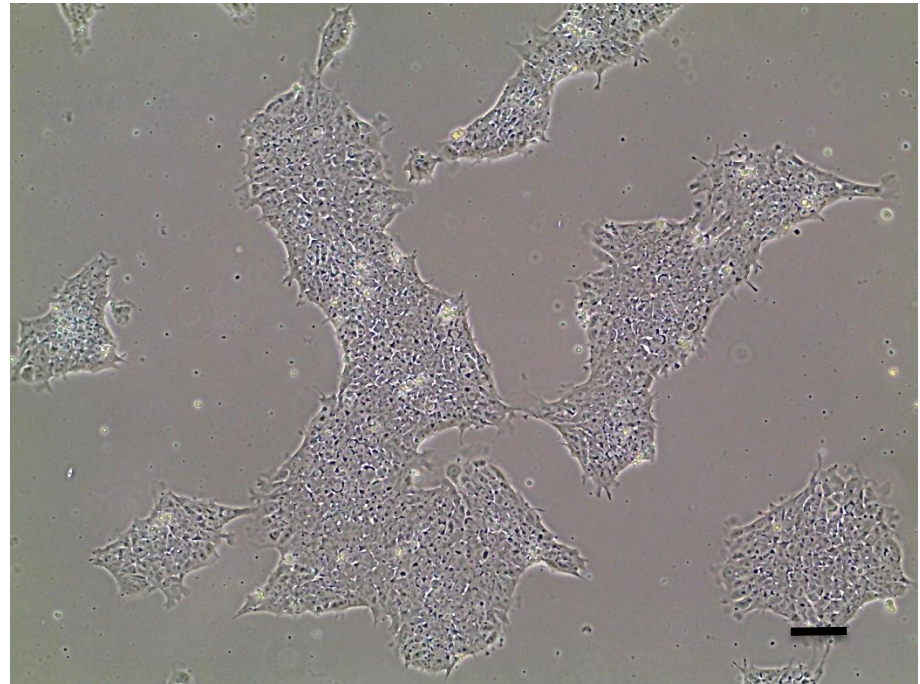
# Viability post-thaw and Morphology according to SOP19 passage 10

- Cell count immediately post-thaw  $3.0 \times 10^6$
- Viability immediately post-thaw 83%
- Photo at 24h and day 3 post-thaw (scale bar =  $100\mu\text{m}$ ):

24h post-thaw 80% plated

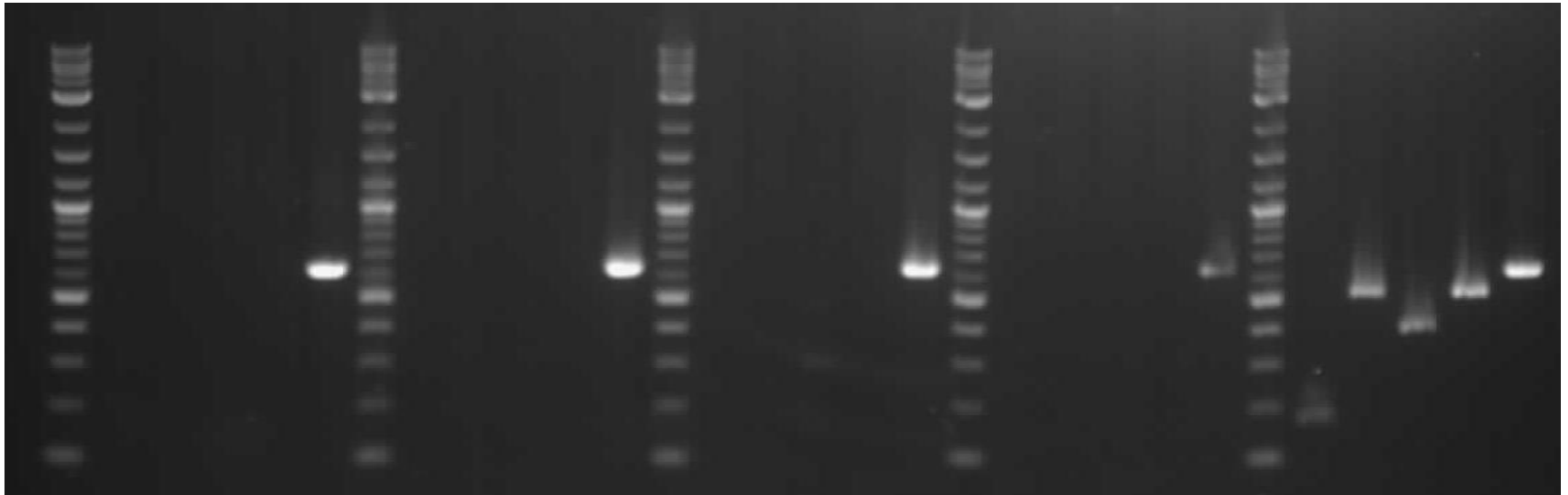


Day 3 post-thaw 20% plated



# Sendai clearance: according to WP3 SOP15 undetectable at passage 10

2Log ladder  
Sendai virus  
KOS  
Klf4  
C-Myc  
Actin  
2Log ladder  
Sendai virus  
KOS  
Klf4  
C-Myc  
Actin  
2Log ladder  
Sendai virus  
KOS  
Klf4  
C-Myc  
Actin  
2Log ladder  
Sendai virus  
KOS  
Klf4  
C-Myc  
Actin  
2Log ladder  
Sendai virus  
KOS  
Klf4  
C-Myc  
Actin



SFC866-03-05

SFC069-03-01

**SFC139-03-06**

SFC843-03-09

+ control

Product sizes: SeV 181bp; KOS 528bp; SeV-Klf 410bp; SeV-Myc 532bp; Actin 623bp

# Mycoplasma Test:

## According to MycoAlert Lonza LT07-318 undetectable at passage 10

Sample	Passage number	Initial	Reading 1	Reading 2	Ratio/Status
+ve control			5.477	116.6	<b>21.29</b>
-ve control			6.458	1.612	<b>0.25</b>
SFC843-03-09	p10	JV	1.992	0.96	<b>0.48</b>
<b>SFC139-03-06</b>	<b>p10</b>	<b>JV</b>	<b>2.598</b>	<b>1.022</b>	<b>0.39</b>
SFC069-03-01	p12	JV	1.552	0.746	<b>0.48</b>
SFC061-03-07	p11	JV	1.591	0.845	<b>0.53</b>

Results mean

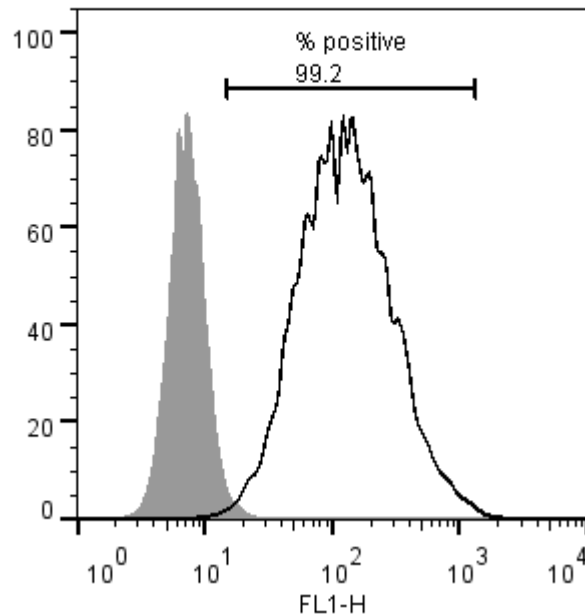
Ratio **0 - 0.999** negative for mycoplasma

Ratio **1 – 1.3** Borderline Result (retest required)

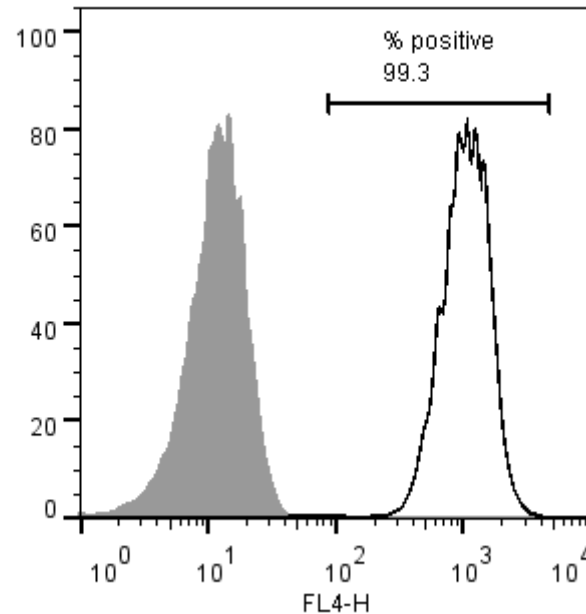
Ratio above **1.3** positive for mycoplasma

# Flow cytometric analysis according to WP3 SOP 20 and 21 passage 10

Tra-1-60:



NANOG:



# SNP analysis

according to WP3 SOP Preparation of DNA and RNA samples for Illumina arrays

- Passage 10
- Identity to parent fibroblasts confirmed by Genomestudio scatterplot
- Karyotype abnormalities: none detected - For details and raw data see StemDB

SF139 [878] X Raw vs SFC139-03-06 [772] X Raw

