



Certificate of Analysis

NIGMS Human Genetic Cell Repository

Human induced Pluripotent Stem Cell (iPSC) Line: **GM27291*B**

Diagnosis	Vici Syndrome
Parental cell line mutation	EPG5; c.1007A>G (p.Q336R)
Parental cell type, cell line ID	Fibroblast, GM26636
Gender	Male
Reprogramming method	Sendai viral vectors containing OCT4, SOX2, KLF4, and CMYC
Passage number at freeze	P17
Culture media	DMEM/F12 + 20% KOSR + 10ng/ml bFGF
Feeder or Matrix substrate	CF1 MEFs on 0.1% Gelatin
Recommended passage method and split ratio	TrypLE Express; 1:3 every 5-6 days
iPSC line establishment publication(s)	

The following testing specifications have been met for this product lot:

Test Description	Test Method	Test Specification	Result
Post-Thaw Cell Viability	Colony doubling	Colony formation and diameter doubling within 5 days	Pass
Sterility	Growth on agar and broth	Negative	Pass
Mycoplasma	qRT-PCR	Negative	Pass
Alkaline Phosphatase Staining	Cell staining	>80% cells with positive staining	Pass
Identity Match	STR (THO-1, D22S417, D10S526, vWA31, D5S592, and FES/FPS)	Match parental cell line	Pass
Genomic Integration of Episomal Plasmid	Genomic PCR using plasmid specific primers and endogenous FBXO1 control	No plasmid specific sequence amplified using 100 ng gDNA template	N/A
Detection of Sendai Virus Genome and Transgene	qRT-PCR using SEV specific primers	No detection of SEV genome or transgenes	Pass
Surface Antigen Expression of Stem Cell Markers	Immunostaining and flow cytometric detection	>80% expression of SSEA4	Pass
Differentiation Potential	Embryoid body (EB) formation and gene expression	Minimum of 1 gene per germ layer expressed 2 fold or higher	Pass
Cytogenomics	G-banding, Affymetrix Human SNP Array 6.0	46, XY[25].arr[hg19]4q12(57,053,403-58,249,858)x3	Pass*

*Note: The 1.1Mb 4q12 duplication is of uncertain clinical significance - this region includes at least 4 OMIM disease genes, but no known phenotype has been established in association with copy number gain of this region.

Candice Ferrell 02/27/2019
.....
Technician, Stem Cell Laboratory Date

Christine Grandizio 02/27/2019
.....
Team Leader, Stem Cell Laboratory Date

Disclaimer: iPSC lines distributed by Coriell Institute for Medical Research may differ from one passage or expansion to another.

Form 1701-07 Rev N-062617: NIGMS HGCR Certificate of Analysis GM27291*B

Post-Thaw Cell Viability

One distribution lot vial of the cell line was thawed and placed in culture. Cultures were observed daily. Colonies were photographed upon first appearance, then 4 days later. Colonies must double in diameter within 5 days. The area for 5 colonies was measured using CellSens software on the Olympus IX50 microscope at 40x magnification. The average area is reported here.

Day	Average area (μm^2)
1	7,648
5	242,155

Colony area increased by 32 fold.

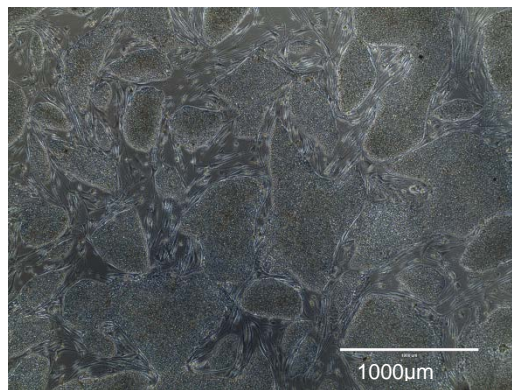
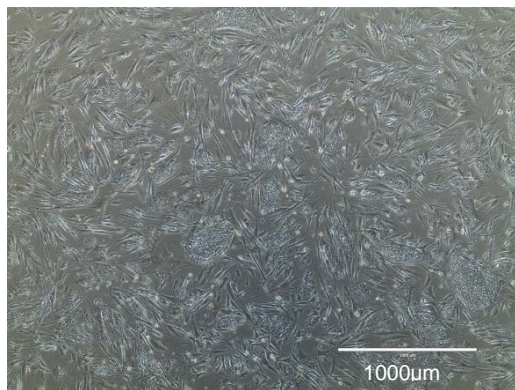


Figure 1A. Colonies post thaw (Day 1)

Figure 1B. Colonies 4 days after first observation (Day 5)

Alkaline Phosphatase Staining

Cells were stained using the StemTAG™ Alkaline Phosphatase Staining Kit from CellBiolabs, Inc.

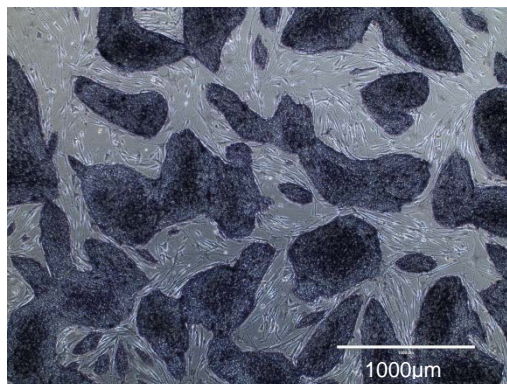


Figure 2. iPSC colonies showing alkaline phosphatase activity

Surface Antigen Expression of Stem Cell Markers

Undifferentiated cells are stained for stage specific embryonic antigen 4 (SSEA4) which is expressed on the surface of undifferentiated human pluripotent stem cells. Cells were analyzed using the MACSQuant Flow Cytometer by Miltenyi Biotec. More than 80% of cells should stain with antibodies specific for SSEA4.

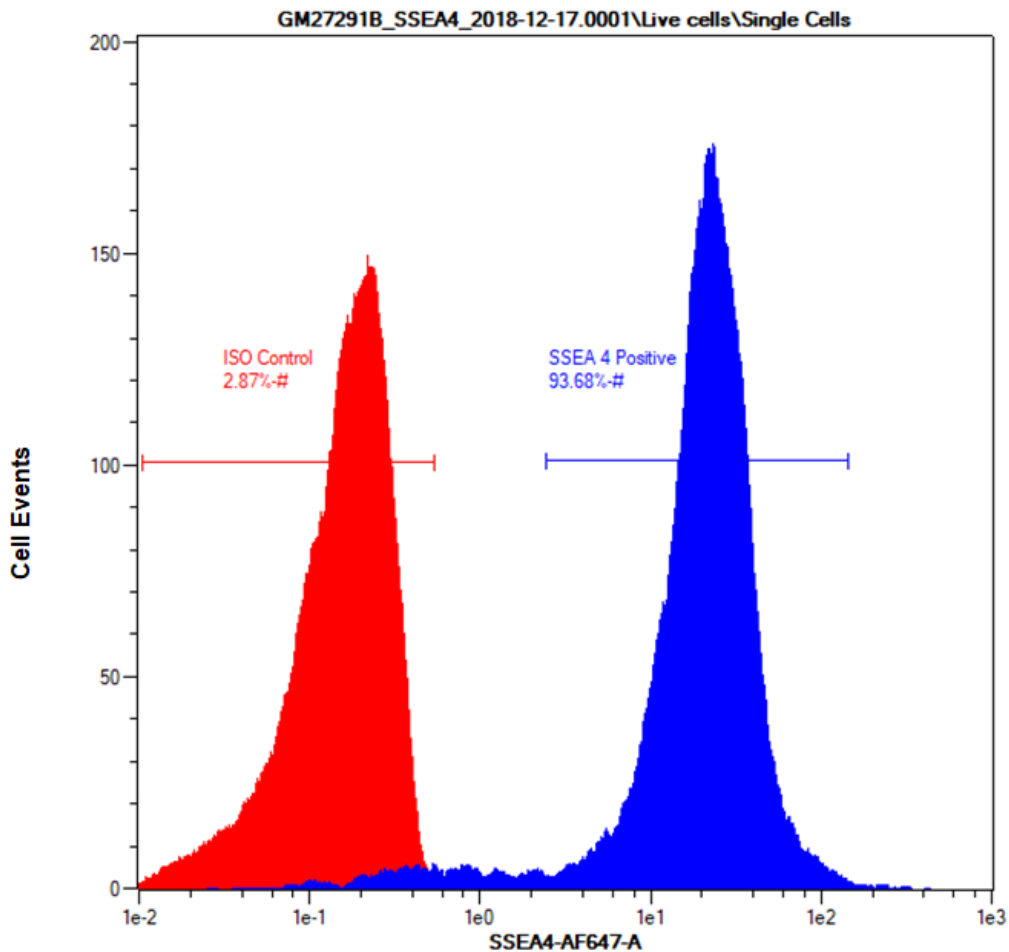
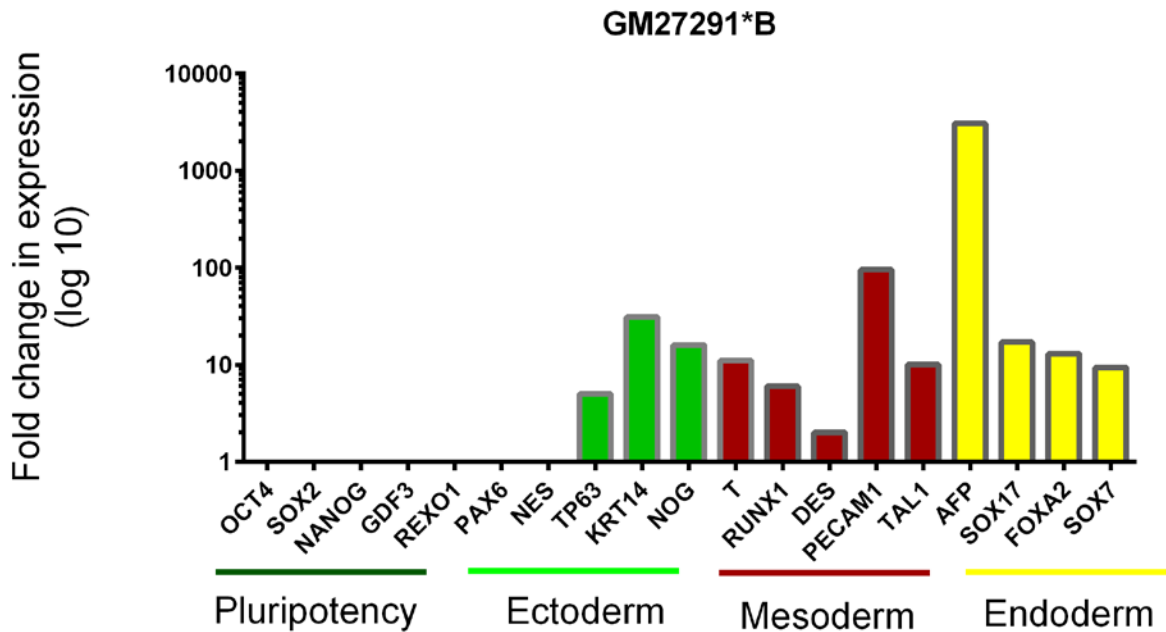


Figure 3. Representative histogram of SSEA4 positive population showing an overlay of isotype stained control (red) and SSEA4 positive population (blue)

Differentiation Potential

Cells are differentiated by embryoid body (EB) formation to assess pluripotency. RNA is extracted and gene expression is measured by quantitative RT-PCR. Ct values are adjusted to the endogenous housekeeping gene GAPDH. Relative gene expression is shown as the fold difference in expression compared to undifferentiated cells. Expression of at least one gene per germ layer should increase by 2 fold or higher.



Gene	Fold change	Gene	Fold change	Gene	Fold change	Gene	Fold change
OCT4	0	PAX6	1	T	11	AFP	3056
SOX2	0	NES	0	RUNX1	6	SOX17	17
NANOG	0	TP63	5	DES	2	FOXA2	13
GDF3	0	KRT14	31	PECAM1	95	SOX7	9
REXO1	0	NOG	16	TAL1	10		

Figure 4. Fold change in expression of pluripotency genes and tri-lineage specific genes

Note: Negative values are set as 0. Calculations are performed using the $2^{-\Delta\Delta CT}$ method. (Livak KJ, Schmittgen TD. *Methods*. 2001 Dec;25(4):402-8.PMID:11846609)



Cytogenomics

Microarray	Affymetrix Human SNP Array 6.0
Cytogenetic Banding Technique	G-banding
Passage at Analysis	P21
Metaphase Cells Counted	25
Metaphase Cells Analyzed	25
Metaphase Cells Karyotyped	5
Short ISCN	46, XY[25].arr[hg19]4q12(57,053,403-58,249,858)x3

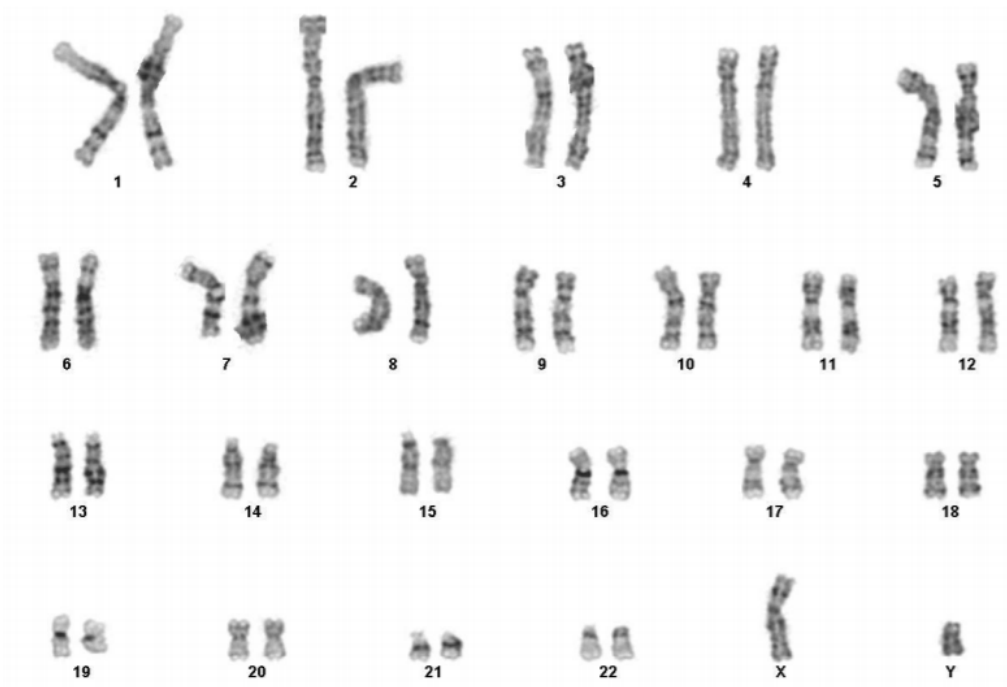


Figure 5. G-banding karyogram