



Certificate of analysis

SFC027-03-02

Operator: Cathy Browne Date: 10/10/16

Supervisor: Sally Cowley Date: 25/02/2018

Signature: *SACowley*

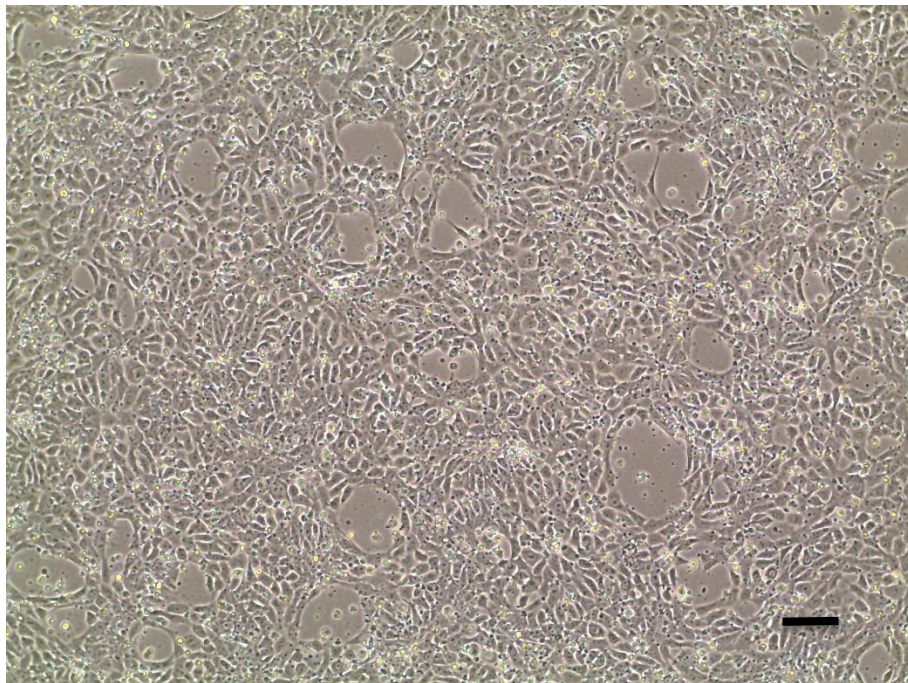
Source of fibroblasts and reprogramming information

- SF027 from Luebeck 17/02/14
- Reprogrammed at UOXF-S
- Reprogrammed on 24/02/16 at passage 2 CB
- Cytotune v2 WP3 SOP10

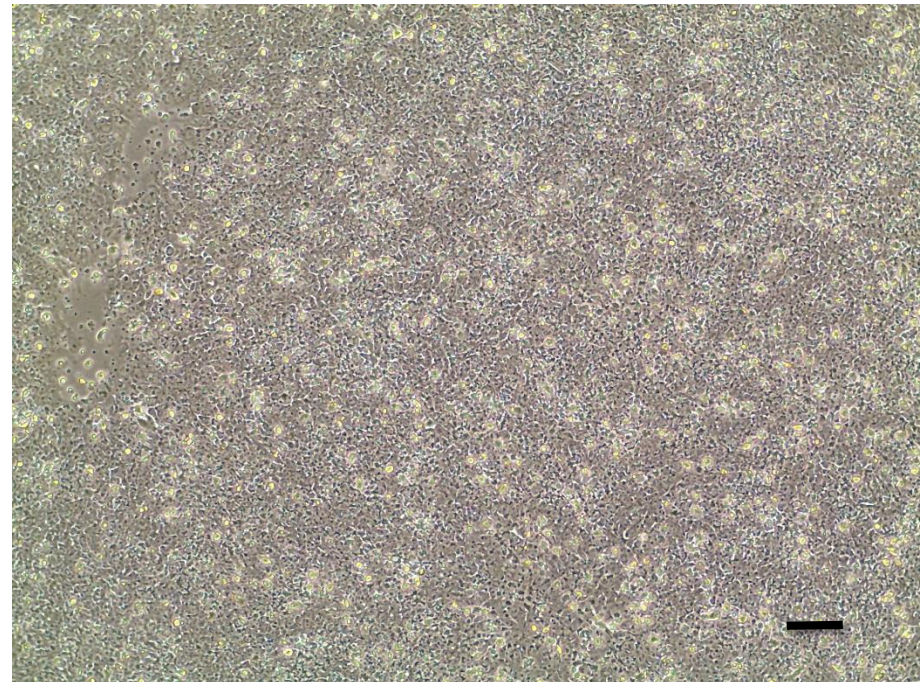
Viability post-thaw and Morphology according to SOP19 passage 10

- Cell count immediately post-thaw 3.18×10^6
- Viability immediately post-thaw 86.6%
- Photo at 24h and day 4 post-thaw (scale bar = $100\mu\text{m}$):

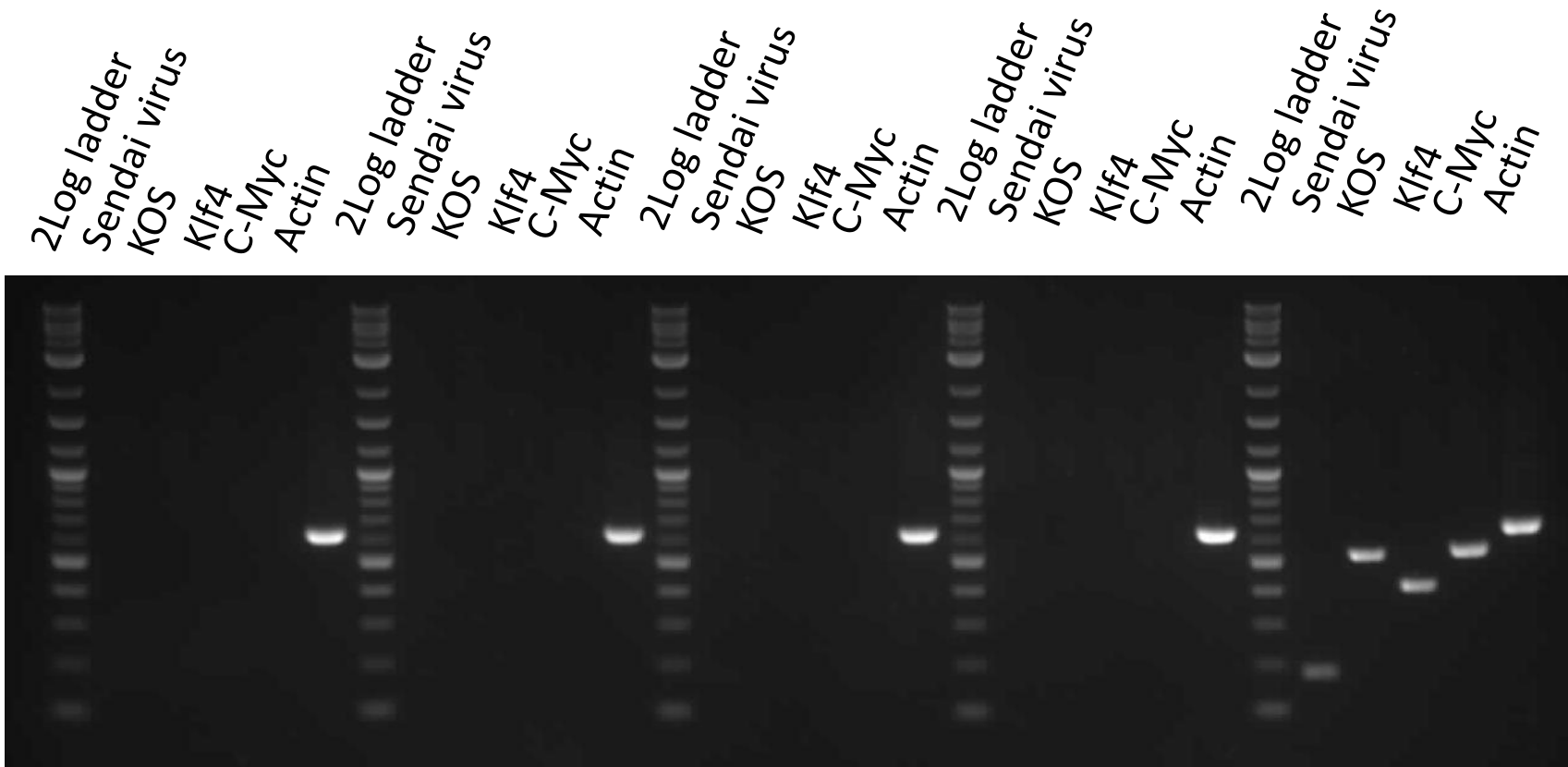
24h post-thaw 80% plated



Day 4 post-thaw 20% plated



Sendai clearance: according to WP3 SOP15 undetectable at passage 10



SFC027-03-02

SFC072-03-06

SFC073-03-05

- control

+ control

Product sizes: SeV 181bp; KOS 528bp; SeV-Klf 410bp; SeV-Myc 532bp; Actin 623bp

Mycoplasma Test:

According to MycoAlert Lonza LT07-318 undetectable at passage 10

Sample	Clone	Passage number	Initial	Reading 1	Reading 2	Ratio/Status
+ve control				3.444	196.2	56.97
-ve control				4.148	0.367	0.09
	SFC027-03-02	p10	OP/CB	2.488	1.003	0.4

Results mean

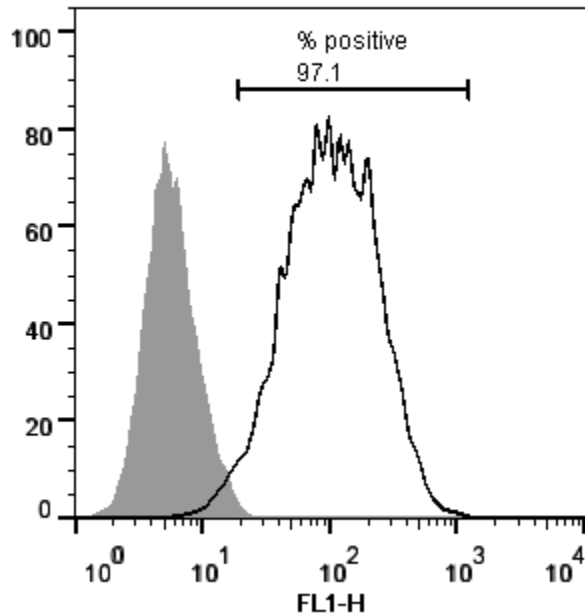
Ratio **0 - 0.999** negative for mycoplasma

Ratio **1 – 1.3** Borderline Result (retest required)

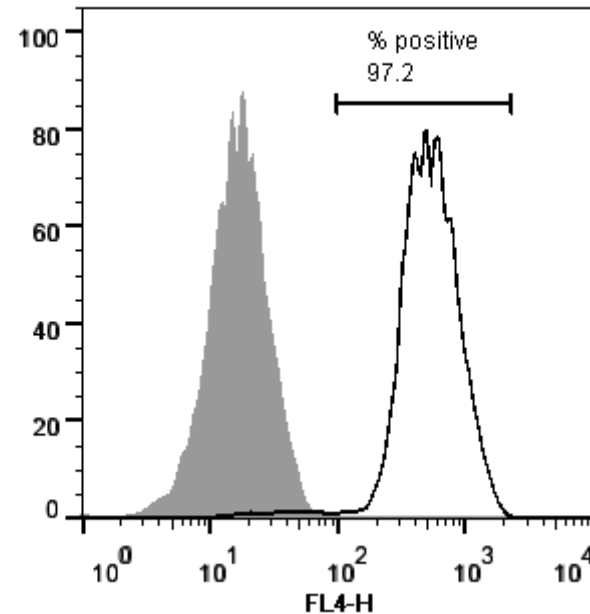
Ratio above **1.3** positive for mycoplasma

Flow cytometric analysis according to WP3 SOP 20 and 21 passage p10

Tra-1-60:



NANOG:



SNP analysis

according to WP3 SOP Preparation of DNA

and RNA samples for Illumina arrays

- Passage 10
- Identity to parent fibroblasts confirmed by Genomestudio scatterplot
- No major karyotype abnormalities detected by Karyostudio

