

Certificate of analysis

SFC086-03-02

Signature: Katja Gassner Date: 10.12.2014

Supervisor signature: Lyle Armstrong

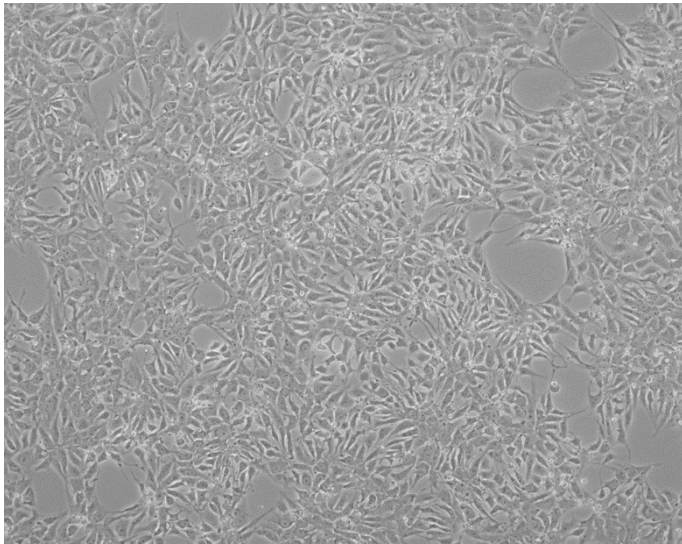
Date: 10.12.2014

Source of fibroblasts and reprogramming information

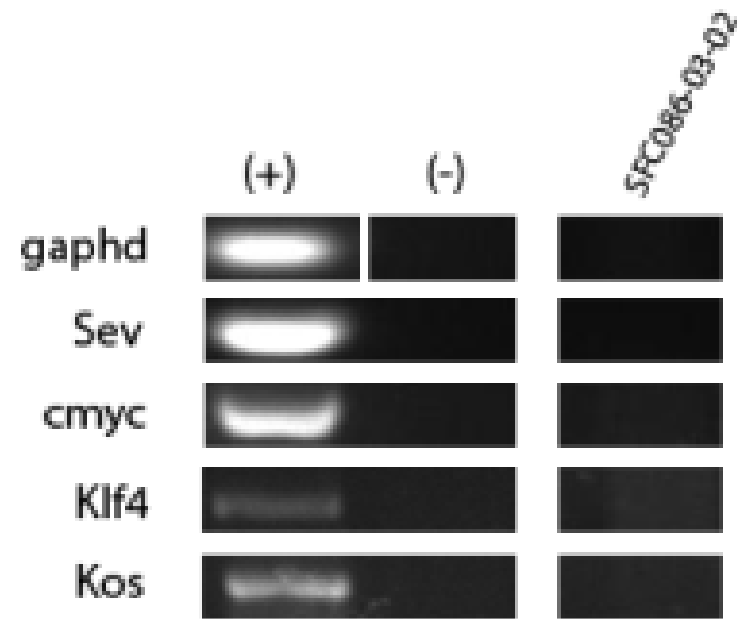
- SF086 from University of Luebeck
- Reprogrammed at UNEW
- Reprogrammed on 31/07/2014 at passage 6
- Cytotune 2

Viability post-thaw and Morphology according to SOP19 passage 12

- Cell count immediately post-thaw 1.4×10^6
- Viability immediately post-thaw 89%
- Photo at 24h post-thaw:



Sendai clearance:
according to WP3 SOP15
undetectable at passage 12



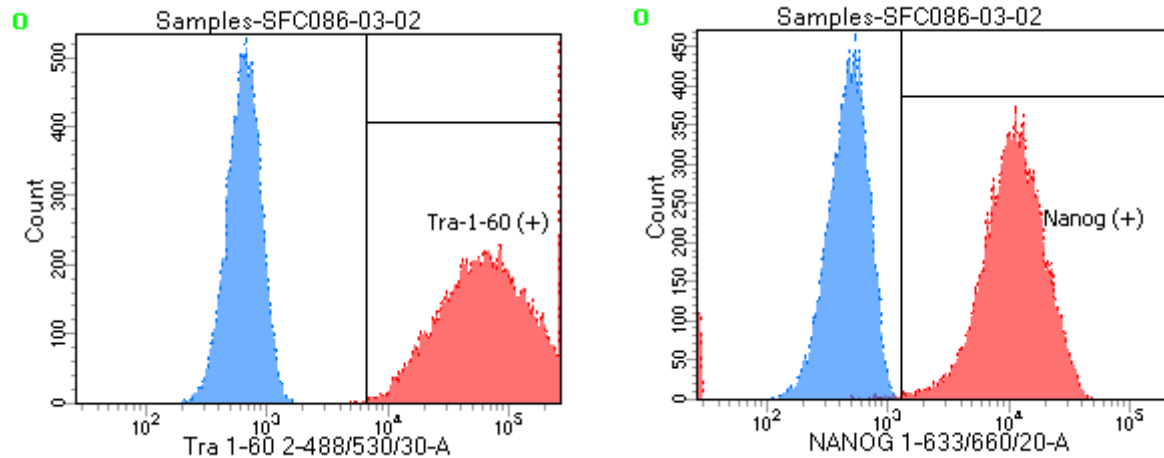
Mycoplasma test:

According to MycoAlert Lonza LT07-318

Undetectable at passage 12

Owner	KG					
Date	28/11/2014					
Cell name	SFC086-03-02					
A	0.1074					
B	0.028					
B/A	0.260707635					
> 1.2		Mycoplasma Contaminated			Positive Control	Negative Control
0.9-1.2		Status Unknown - Restest within 24 hours			0.0408	0.0802
0-0.9		Mycoplasma Free			1.387	0.0053
					33.99509804	0.066084788

Flow cytometric analysis according to WP3 SOP 20 and 21 passage 12



Tube: SFC086-03-02

Population	#Events	%Parent	%Total
■ All Events	20,000	####	100.0
■ Cells	13,656	68.3	68.3
☒ Tra-1-60 (+)	13,611	99.7	68.1
☒ Nanog (+)	13,362	97.8	66.8
■ Samples/86 UN/All Events	20,000	####	100.0
■ Samples/86 UN/P1	11,318	56.6	56.6

SNP analysis

according to WP3 SOP Preparation of DNA
and RNA samples for Illumina arrays

- Passage 12
- Identity to parent fibroblasts confirmed
- Karyotype abnormalities none
- For details and raw data see StemDB