

Certificate of analysis

SFC874-03-01

Viability post-thaw and Morphology according to SOP19 passage 10

- Cell count immediately post-thaw: 2M
- Viability immediately post-thaw: 91%

Photo at 24h post-thaw:

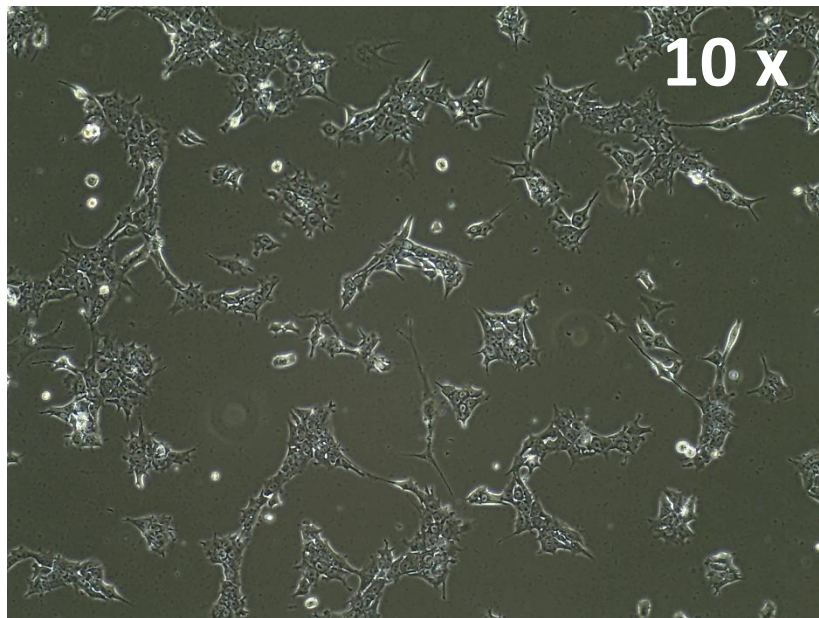
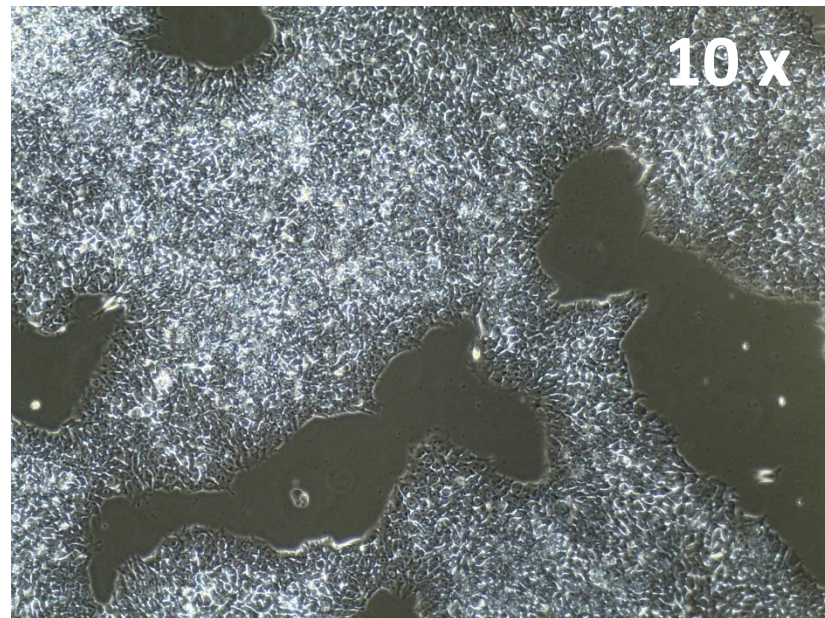


Photo at day 5 post-thaw:



Sendai clearance
according to WP3 SOP15:
undetectable at passage 10

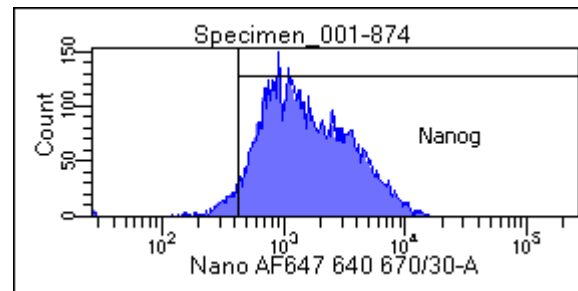
Mycoplasma test
According to MycoAlert Lonza LT07-318:
Undetectable at passage 10

| > 1.2 | Mycoplasma Contaminated | Positive Control | Negative Control |
|---------|--|-------------------|--------------------|
| 0.9-1.2 | Status Unknown - Retest within 24 hours | 2069 | 3338 |
| 0-0.9 | Mycoplasma Free | 73060 | 602.4 |
| | | 35.3117448 | 0.180467346 |

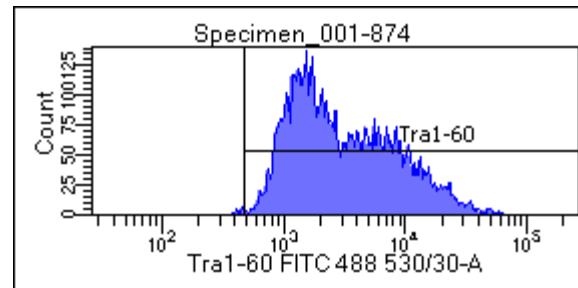
| | |
|-----------|--------------|
| Date | 21/11/2017 |
| Cell name | SFC874-03-01 |
| A | 2883 |
| B | 523.8 |
| B/A | 0.181685744 |

Flow cytometric analysis according to WP3 SOP 20 and 21 passage 10

Nanog: 94.5%



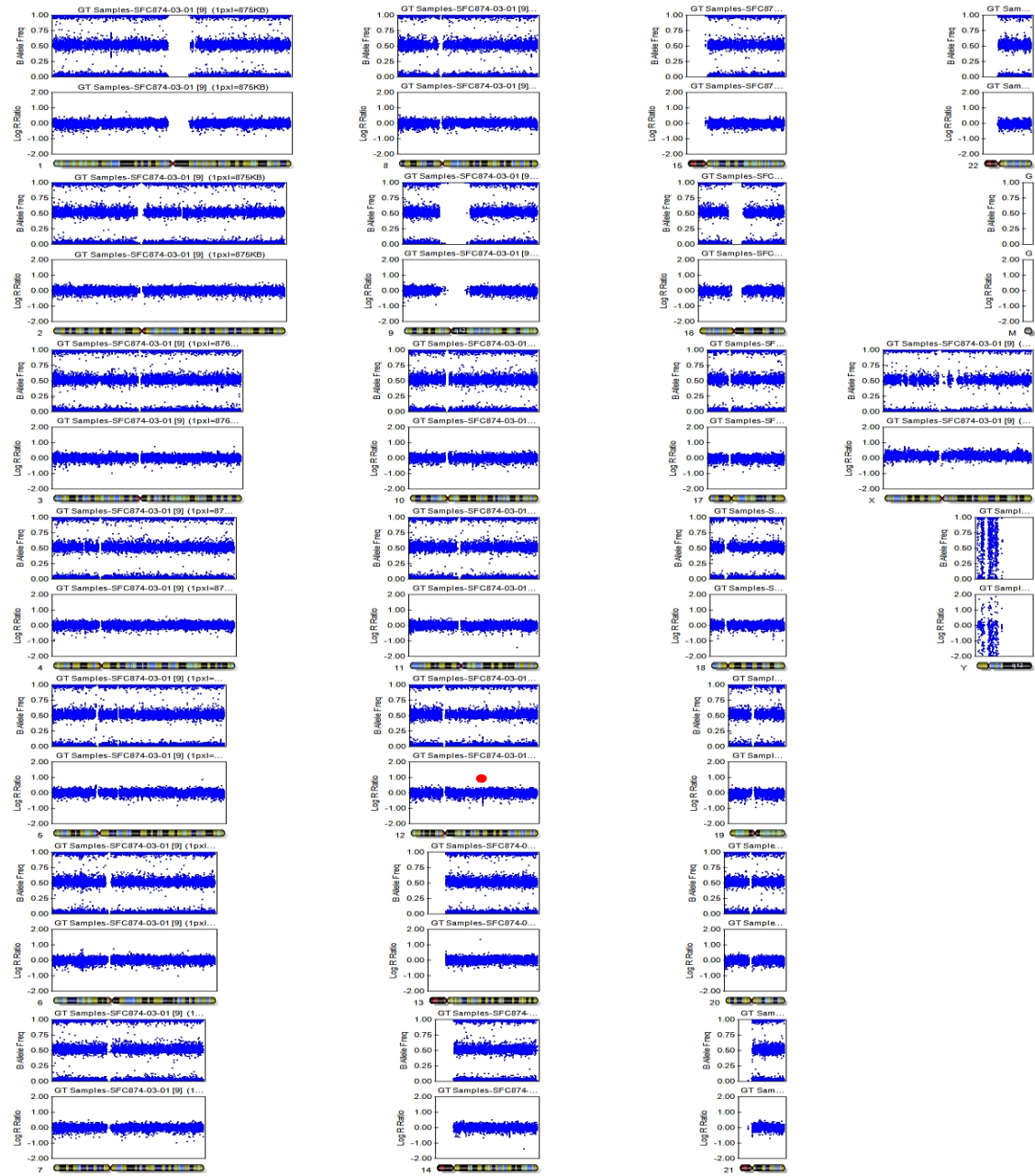
Tra-1-60: 99.1%



SNP analysis

according to WP3 SOP Preparation of DNA
and RNA samples for Illumina arrays

- Passage 10



Red dot:
insertion