

Certificate of analysis

SFC050-03-22

Signature: Theodore Latsis: 15-05-2015

Supervisor signature: Lyle Armstrong

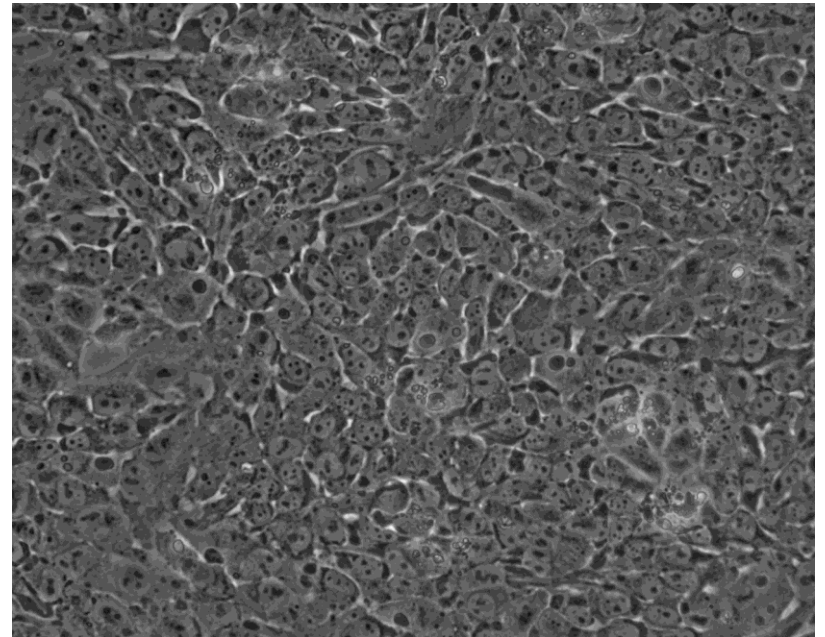
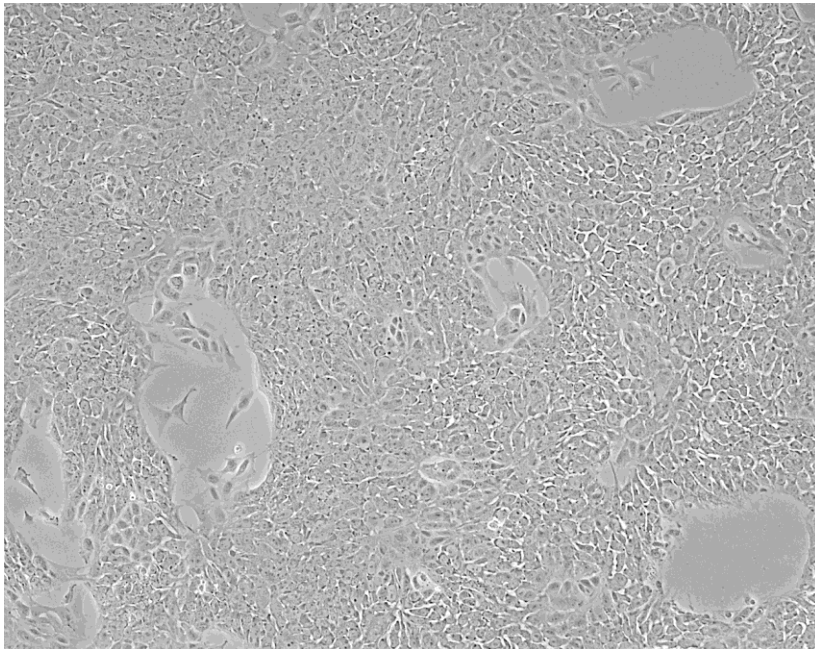
Date: 15-5-2015

Source of fibroblasts and reprogramming information

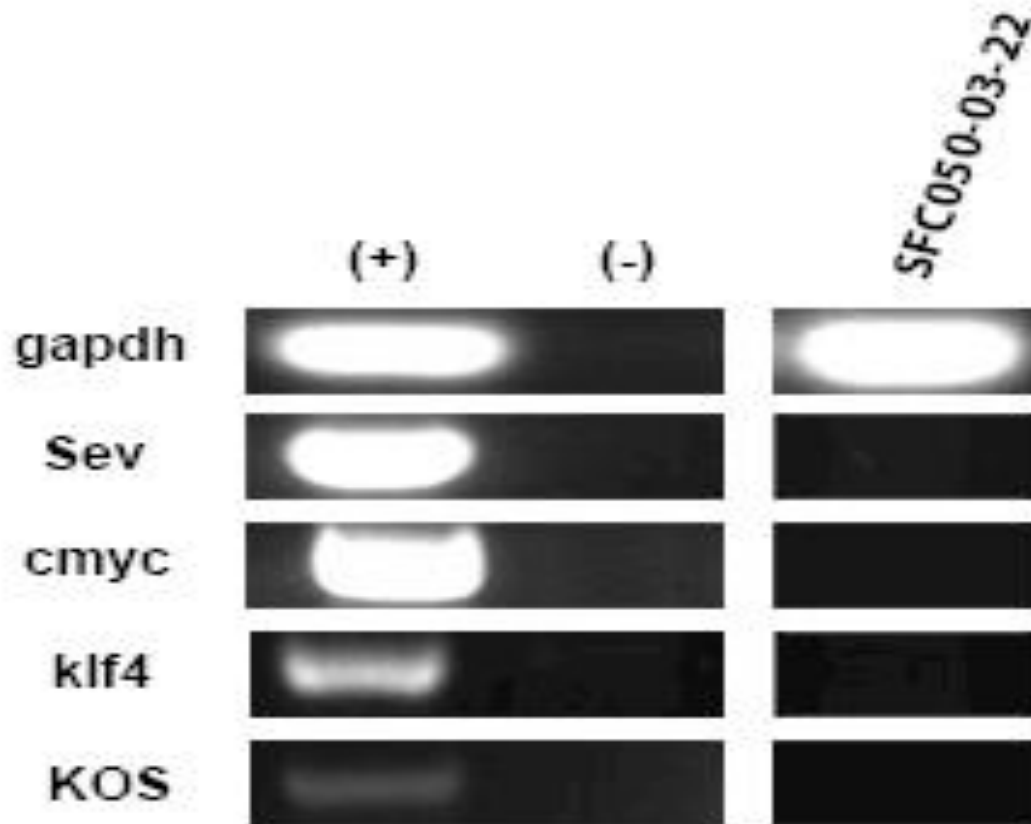
- SF050 from University of Oxford
- Reprogrammed at UNEW
- Reprogrammed on 13-01-2015 at passage 5
- Cytotune 2
- Because of the large number of cells/vial, it is advisable to seed cells into a minimum of 2 wells of a 6wp

Viability post-thaw and Morphology according to SOP19 passage 8

- Cell count immediately post-thaw: 3mil.
- Viability immediately post-thaw: 91%
- Photo 24h post-thaw (x5 & x10)



Sendai clearance:
according to WP3 SOP15
undetectable at passage 8



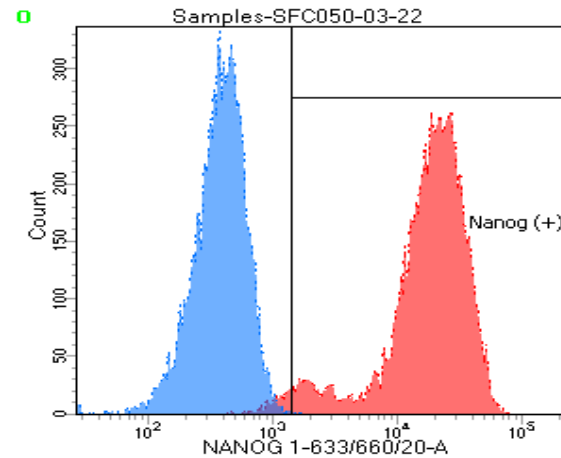
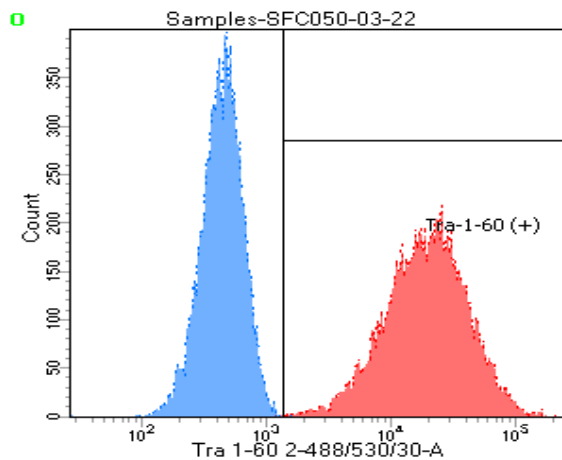
Mycoplasma test:

According to MycoAlert Lonza LT07-318

Undetectable at passage 8

> 1.2		Mycoplasma Contaminated	Positive Control	Negative Control	Cell name	SFC-050-03-22
0.9-1.2		Status Unknown - Restest within 24 hours	0.053	0.062	A	0.018
0-0.9		Mycoplasma Free	0.963	0.010	B	0.007
			18.068	0.166	B/A	0.420

Flow cytometric analysis according to WP3 SOP 20 and 21 passage 8



Tube: SFC050-03-22

Population	#Events	%Parent	%Total
All Events	20.000	####	100.0
Cells	10.220	51.1	51.1
Tra-1-60 (+)	10.200	99.8	51.0
Nanog (+)	9.915	97.0	49.6
Samples/50UN/All Events	20.000	####	100.0
Samples/50UN/P1	9.577	47.9	47.9

SNP analysis

according to WP3 SOP Preparation of DNA and RNA samples for Illumina arrays

- Passage 8
- Identity to parent fibroblasts confirmed
- Karyotype abnormalities: none detected
- For details and raw data see StemDB