

# Certificate of analysis

Signature: Nuno Alcada

Supervisor Signature: Linda Lako

Date: 10.10.2014

SFC062-03-03

# Source of fibroblasts and reprogramming information

- SF062 from Luebeck
- Reprogrammed at UNEW NA
- Reprogrammed on 15/05/2014 at passage 8
- Cytotune v2 WP3 SOP22

# Viability post-thaw and Morphology according to SOP19 passage 14

- Cell count immediately post-thaw  $4.13 \times 10^6$
- Viability immediately post-thaw 96%
- Photo at 24h post-thaw:

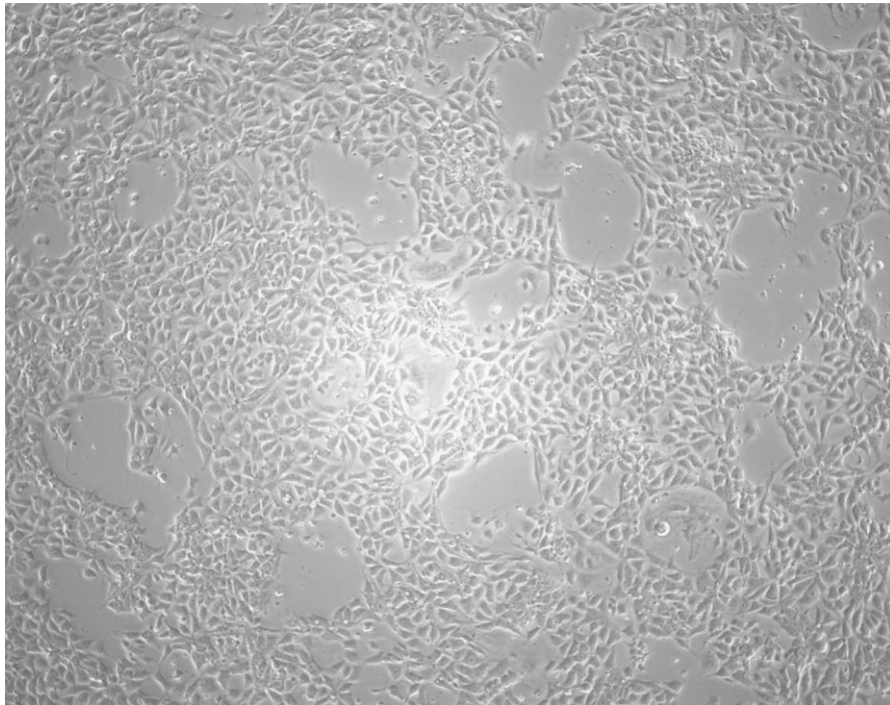
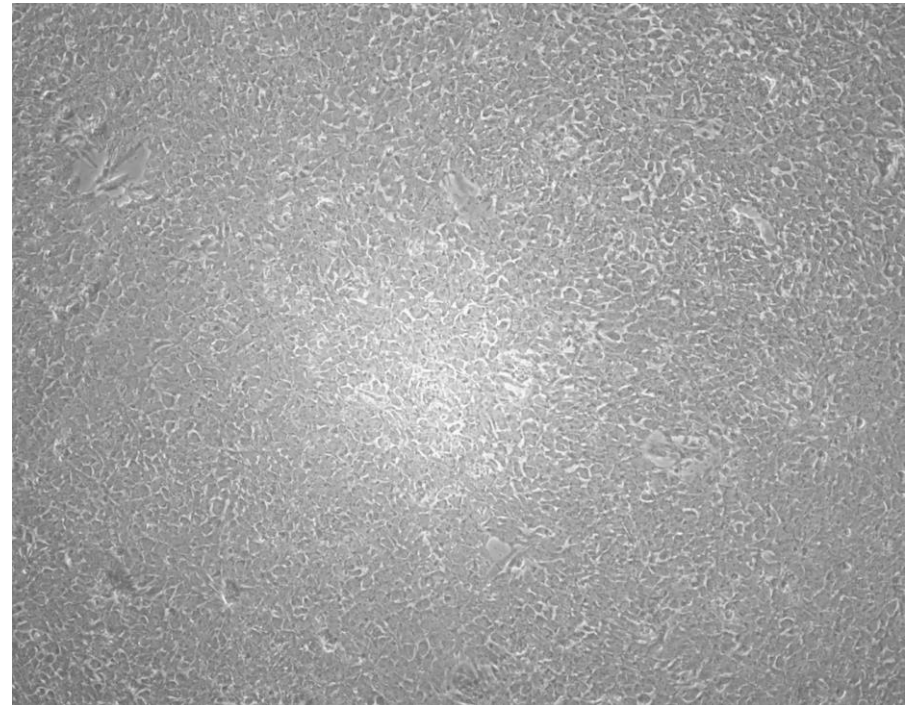
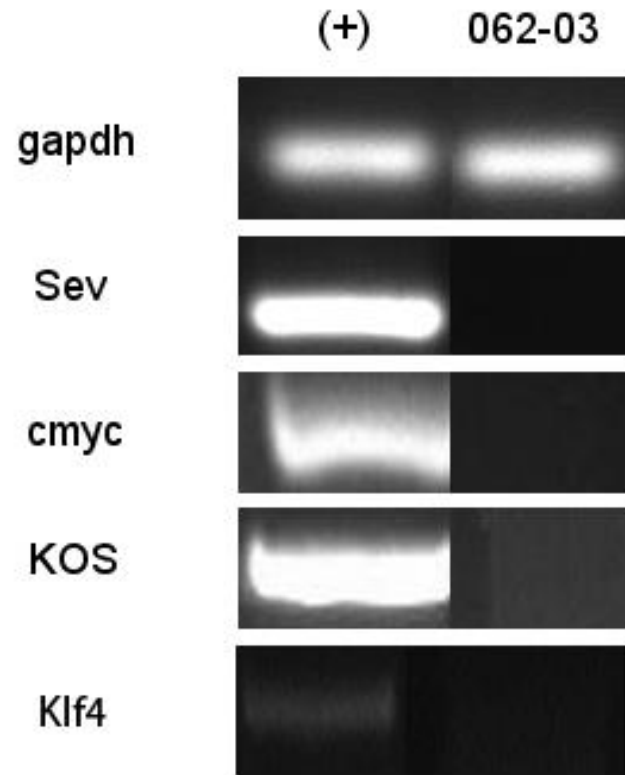


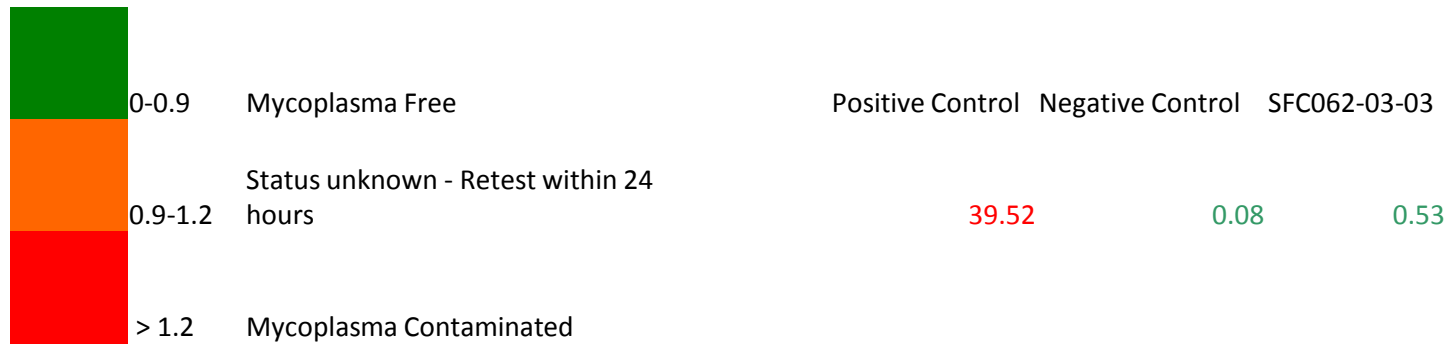
Photo at Confluence:



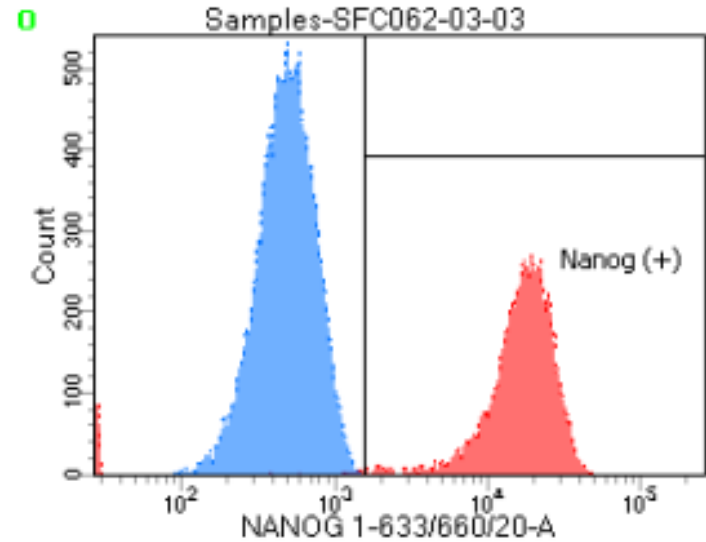
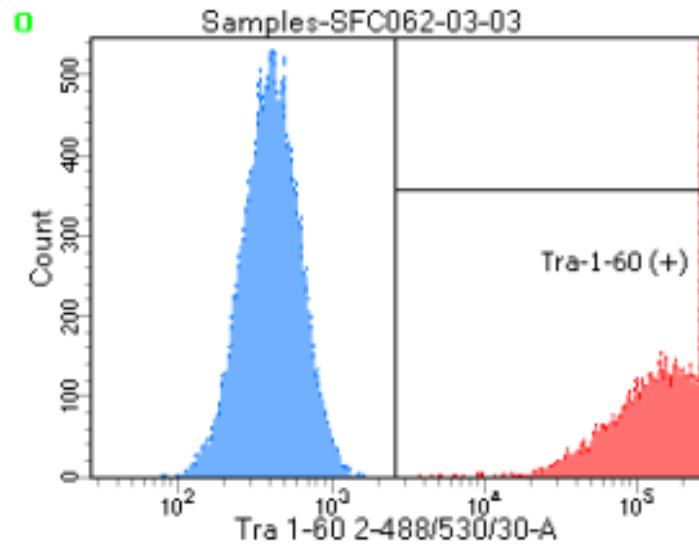
# Sendai clearance: according to WP3 SOP15



# Mycoplasma test: Undetectable at passage 14



# Flow cytometric analysis according to WP3 SOP 20 and 21 passage 14



Tra-1-60 %: 99.9%

NANOG %: 96.9%

# SNP analysis

according to WP3 SOP Preparation of DNA  
and RNA samples for Illumina arrays

- Passage 14
- Identity to parent fibroblasts confirmed
- Karyotype abnormalities none
- For details and raw data see StemDB