

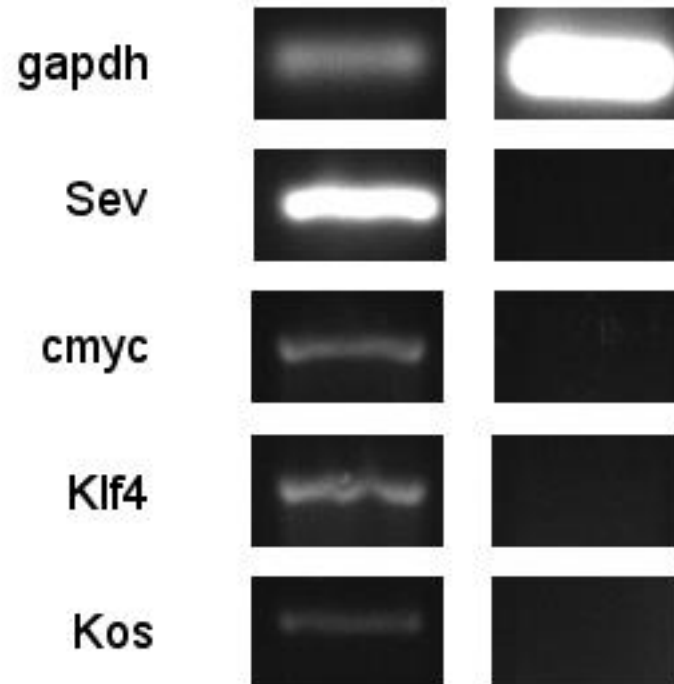
# Certificate of analysis

SFC-017-03-02

# Source of fibroblasts

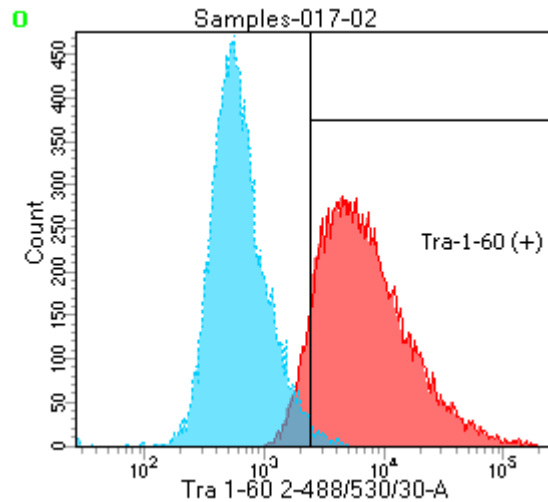
SF017 fibroblasts delivered from Oxford November 2013

# Sendai Clearance

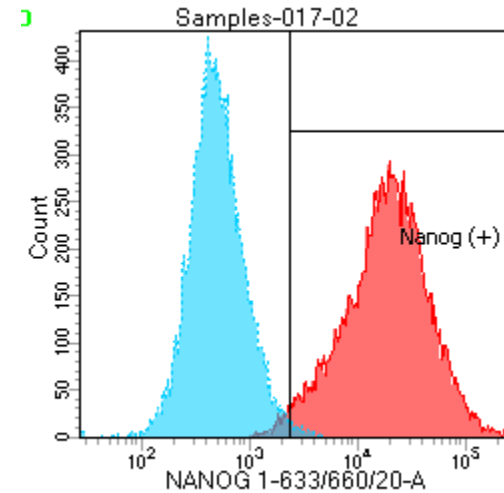


# Flow cytometric analysis

**TRA-1-60: 90.4%**



**NANOG: 97.5%**



# CytoSNP analysis

## **Identity to parent fibroblasts**

- confirmed

## **Karyotype abnormalities**

- Minor Chr8 deletion
- Major Chr17 amplification

# notes

- This clone is prone to differentiation if allowed to reach confluency
- Passage with EDTA for 2 minutes every 4-5 days