



Certificate of analysis

SFC081-03-02

Operator: Jane Vowles

Date: 17/03/2015

Supervisor: Sally Cowley

Date: 04.09.2015

Signature: *SACowley*

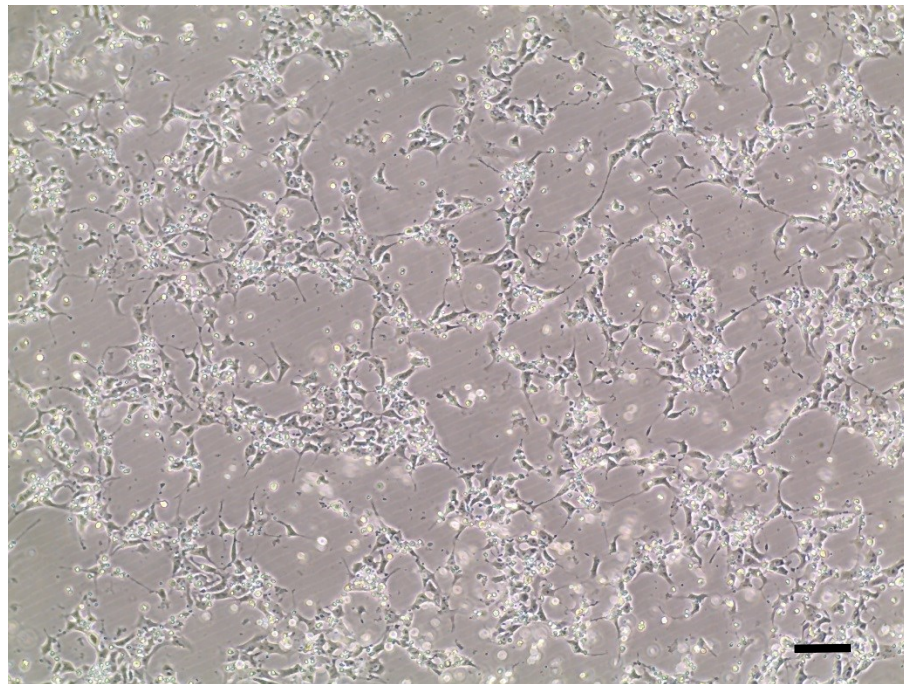
Source of fibroblasts and reprogramming information

- SF081 from Lubeck
- Reprogrammed at UOXF JMSCF
- Reprogrammed on 05/06/2014 at passage 3
- Cytotune v1 WP3 SOP10

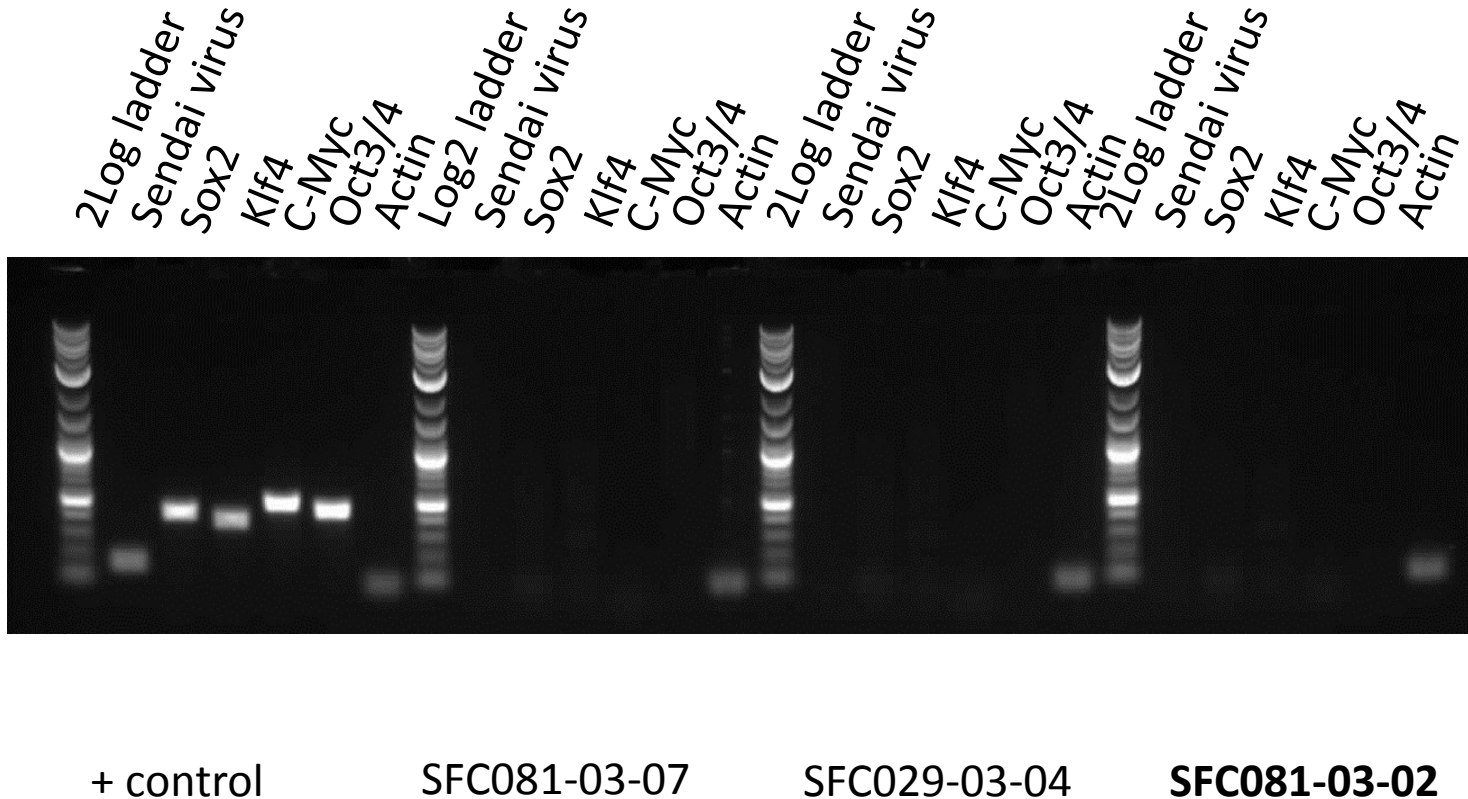
Viability post-thaw and Morphology according to SOP19 passage 19

Recommend thawing to small format well

- Cell count immediately post-thaw 1.45×10^6
- Viability immediately post-thaw 64%
- Photo at 24h post-thaw (scale bar = 100 μ m):



Sendai clearance: according to WP3 SOP15 undetectable at passage 19



Product sizes: SeV 181bp; SeV-Sox 451bp; SeV-Klf 410bp; SeV-Myc 532bp; SeV-Oct 483bp; Actin 92bp

Mycoplasma Test:

According to MycoAlert Lonza LT07-318 undetectable at passage 19

Sample	Clone	Passage number	Initial	Reading 1	Reading 2	Ratio/Status
+ve control				5.084	148.1	29.13
-ve control				4.485	0.531	0.12
7	SFC081-03-02	p11+8	JV	2.06	0.96	0.47

Results mean

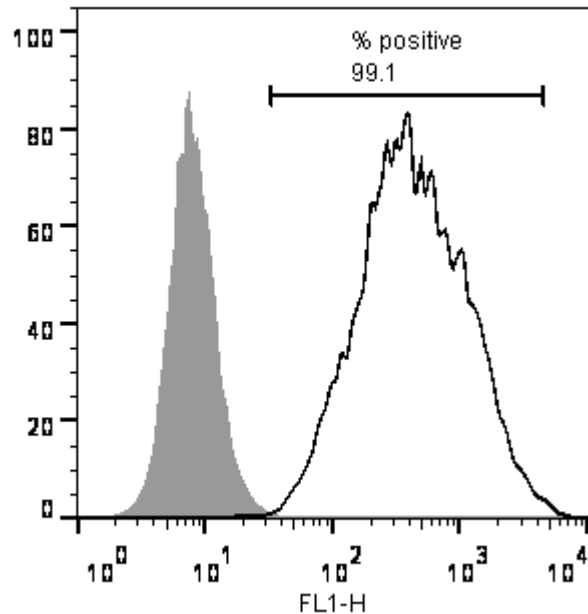
Ratio **0 - 0.999** negative for mycoplasma

Ratio **1 – 1.3** Borderline Result (retest required)

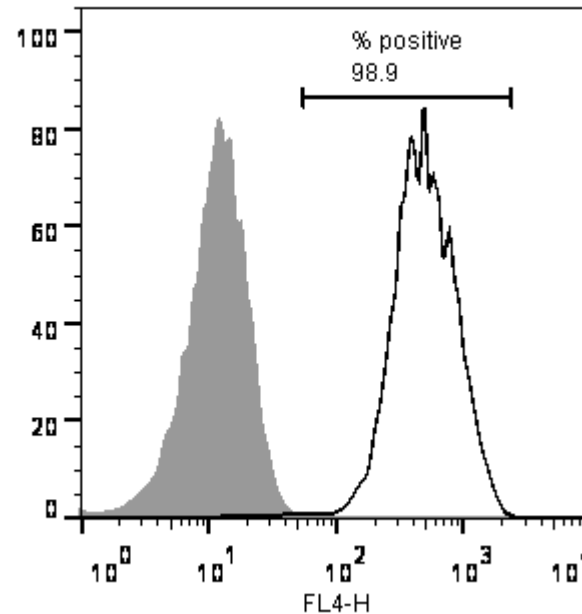
Ratio above **1.3** positive for mycoplasma

Flow cytometric analysis according to WP3 SOP 20 and 21 passage p20

Tra-1-60:



NANOG:



SNP analysis

according to WP3 SOP Preparation of DNA and RNA samples for Illumina arrays

- Passage 19
- Identity to parent fibroblasts confirmed
- Karyotype abnormalities: none detected compared to fibroblasts
- For details and raw data see StemDB