



Certificate of analysis

SFC871-03-04

Operator: C Browne

Date: 07/09/15

Supervisor: Sally Cowley

Date: 01.03.2016

Signature:

SACowley

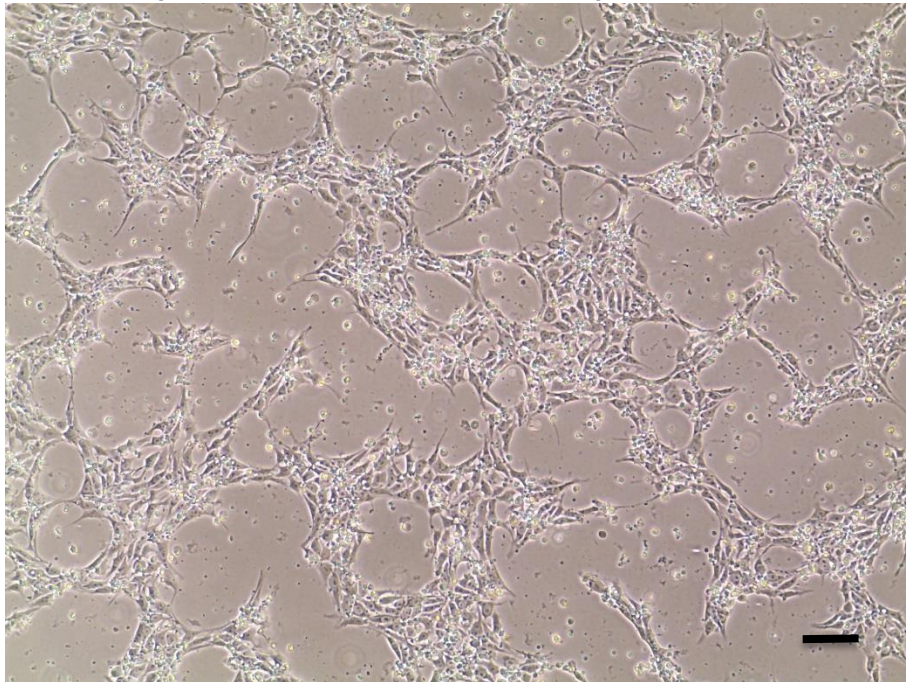
Source of fibroblasts and reprogramming information

- SF871 from UOXF
- 28/02/2014
- Reprogrammed at UOXF S
- Reprogrammed on 12/02/15 at passage p4
- Cytotune v2 WP3 SOP10

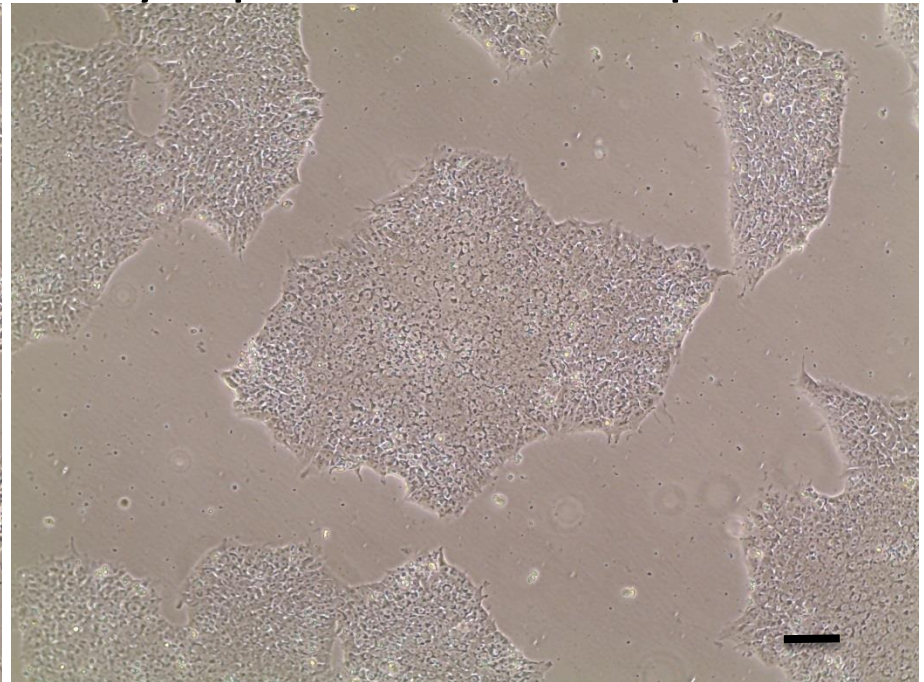
Viability post-thaw and Morphology according to SOP19 passage p13

- Cell count immediately post-thaw 2.28×10^6
- Viability immediately post-thaw 77%
- Photo at 24h & day 4 post-thaw (scale bar = $100\mu\text{m}$):

24h post-thaw 80% plated

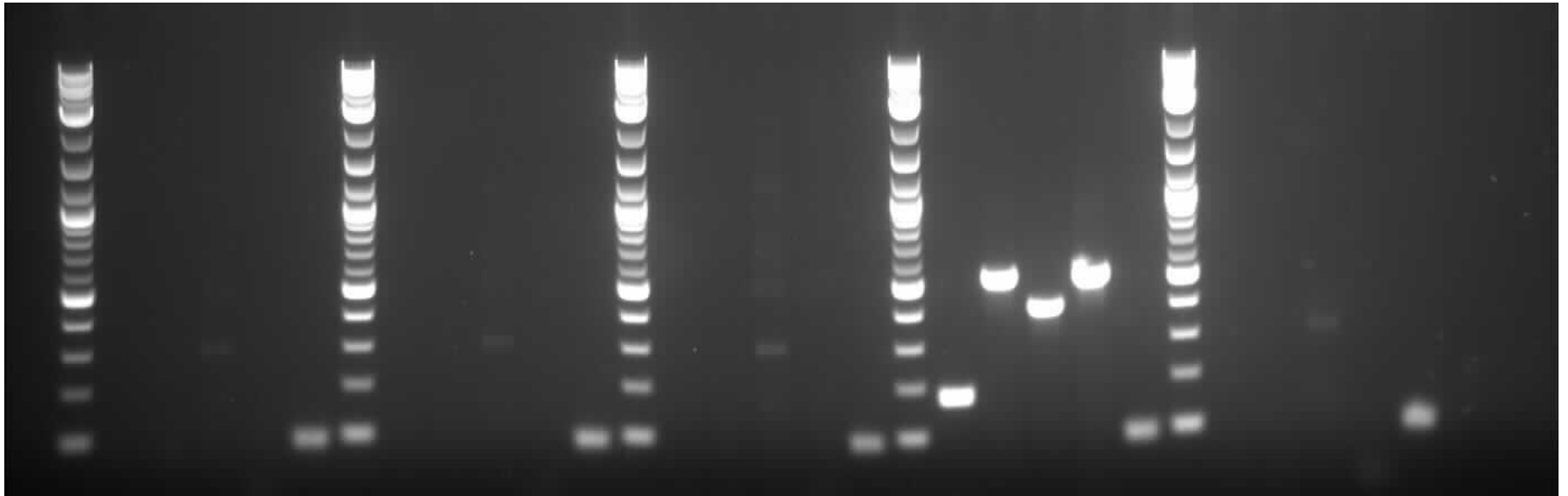


Day 4 post-thaw 20% plated



Sendai clearance: according to WP3 SOP15 undetectable at passage 13

2Log ladder
Sendai virus
KOS
Klf4
C-Myc
Actin
2Log ladder
Sendai virus
KOS
Klf4
C-Myc
Actin
2Log ladder
Sendai virus
KOS
Klf4
C-Myc
Actin
2Log ladder
Sendai virus
KOS
Klf4
C-Myc
Actin
2Log ladder
Sendai virus
KOS
Klf4
C-Myc
Actin



SFC830-04-09

SFC871-03-04

SFC871-03-09

+ control

- control

Non-specific band is visible in Klf lane

Product sizes: SeV 181bp; KOS 528bp; SeV-Klf 410bp; SeV-Myc 532bp; Actin 92bp

Mycoplasma Test:

According to MycoAlert Lonza LT07-318 undetectable at passage p13

Sample	Clone	Passage number	Initial	Reading 1	Reading 2	Ratio/Status
+ve control				7.64	199.10	26.07
-ve control				9.31	0.60	0.06
	SFC871-03-04	p5+8	CB	4.40	1.80	0.41

Results mean

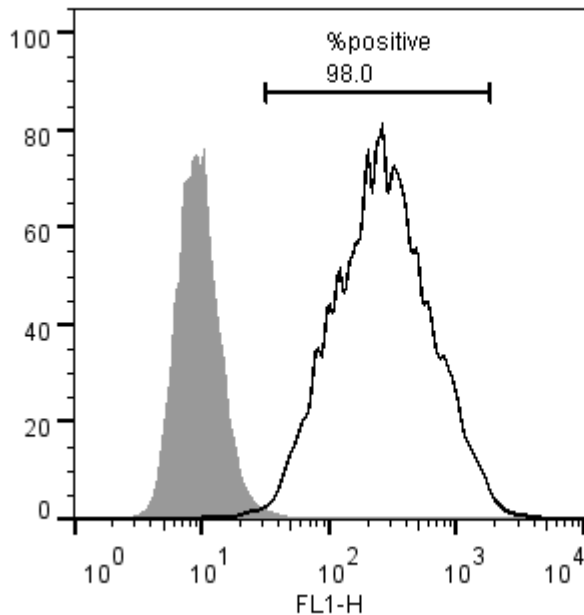
Ratio **0 - 0.999** negative for mycoplasma

Ratio **1 – 1.3** Borderline Result (retest required)

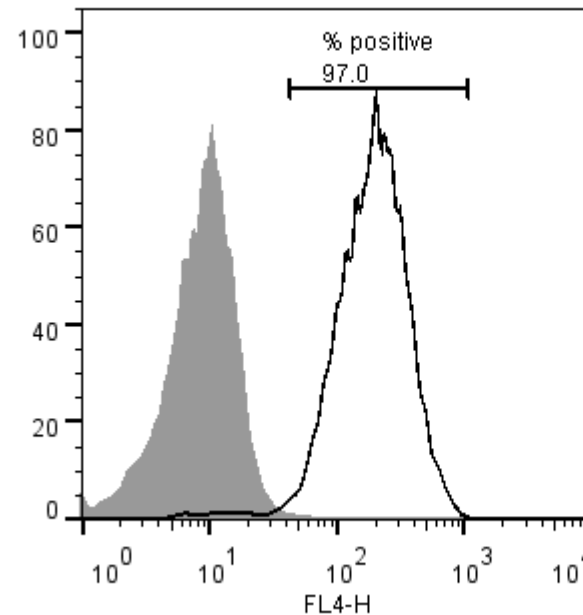
Ratio above **1.3** positive for mycoplasma

Flow cytometric analysis according to WP3 SOP 20 and 21 passage p13

Tra-1-60:



NANOG:



SNP analysis

according to WP3 SOP Preparation of DNA and RNA samples for Illumina arrays

- Passage p13
- Identity to parent fibroblasts confirmed
- Karyotype abnormalities: none detected
- For details and raw data see StemDB