

Certificate of analysis

SFC089-03-55

Signature: Theodore Latsis: 08-12-2014

Supervisor signature: Lyle Armstrong

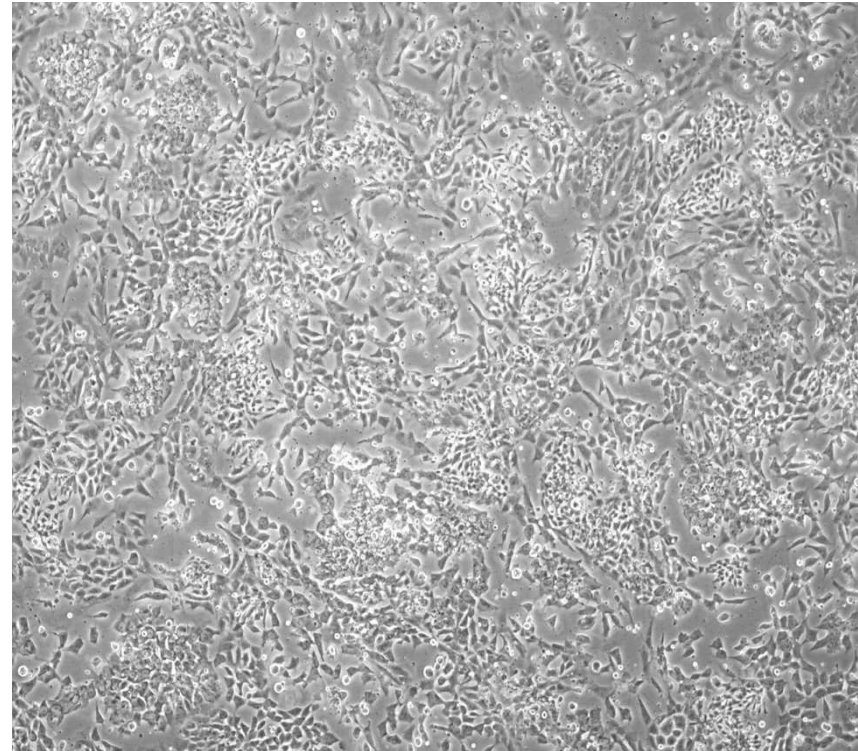
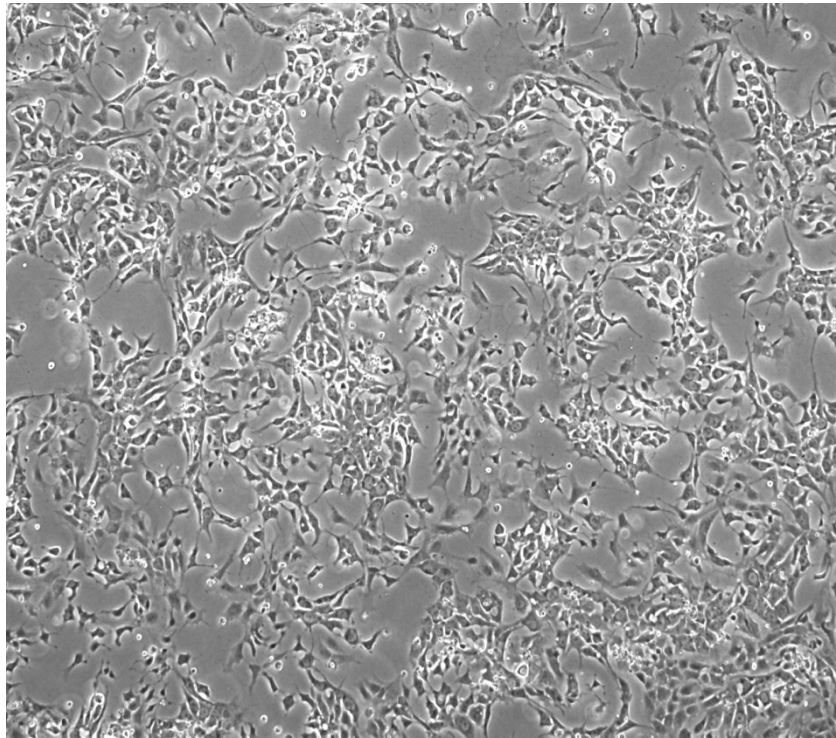
Date: 08-12-2014

Source of fibroblasts and reprogramming information

- SF089 from University of Luebeck
- Reprogrammed at UNEW
- Reprogrammed on 31-07-2014 at passage 6
- Cytotune 2

Viability post-thaw and Morphology according to SOP19 passage 11

- Cell count immediately post-thaw 2.5×10^6
 - Viability immediately post-thaw 98%
 - Photo 24h post-thaw
- Passage the post thaw well with EDTA results in differentiation (see picture below)

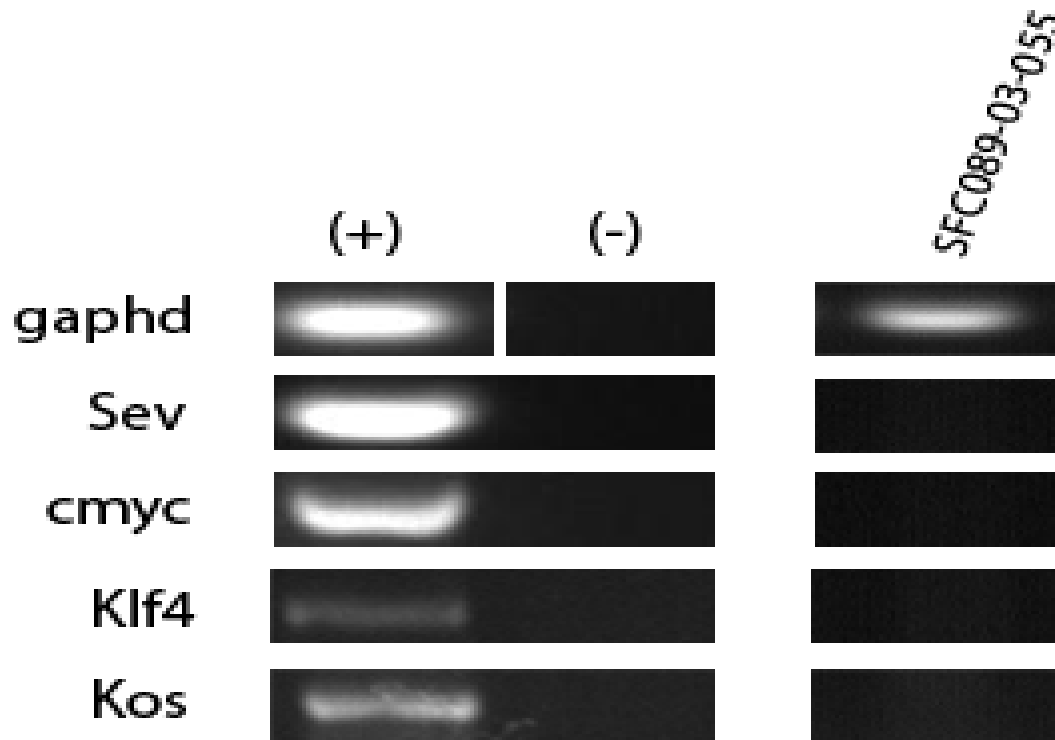


Both accutase and EDTA result in differentiation: Mechanical passaging is recommended for this clone at 1:3 ratio

Vials sent

- In view of the post thaw results, we have provided 3 vials frozen with the accutase method and 4 vials frozen with mechanical passaging

Sendai clearance:
according to WP3 SOP15
undetectable at passage 11



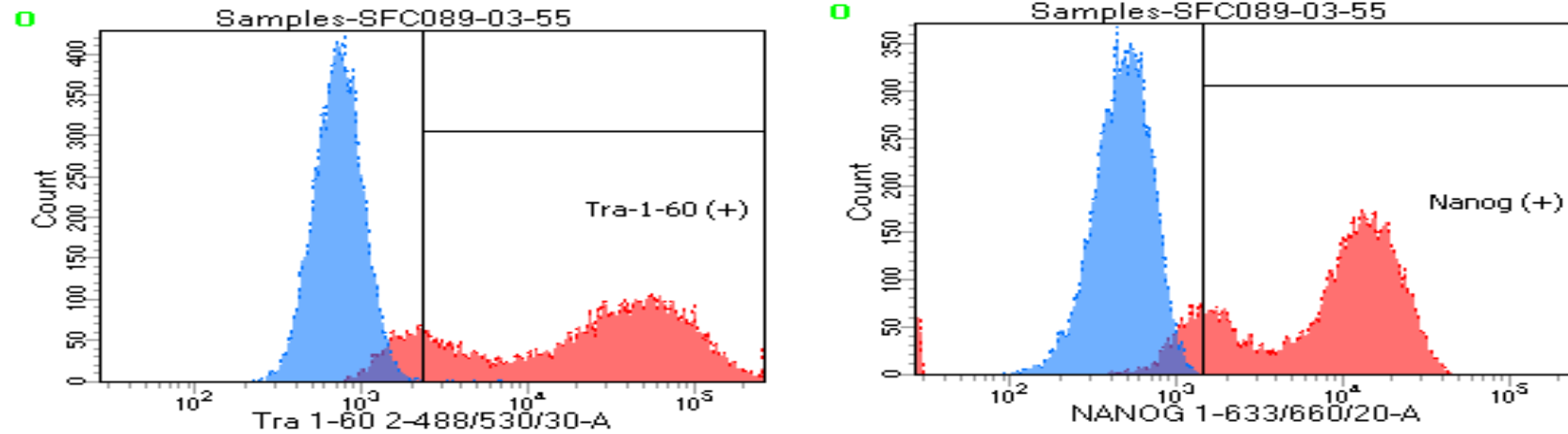
Mycoplasma test:

According to MycoAlert Lonza LT07-318

Undetectable at passage 11

> 1.2		Mycoplasma Contaminated		Positive Control	Negative Control
0.9-1.2		Status Unknown - Restest within 24 hours		0.0532	0.069
0-0.9		Mycoplasma Free		2.768	0.0112
				Owner	Theodore Latsis
				Date	04/12/2014
				Cell name	SFC-089-03-55
				A	0.0112
				B	0.0042
				B/A	0.375

Flow cytometric analysis according to WP3 SOP 20 and 21 passage 11



Tube: SFC089-03-55

Population	#Events	%Parent	%Total
■ All Events	20,000	####	100.0
■ Cells	8,406	42.0	42.0
▣ Tra-1-60 (+)	7,198	85.6	36.0
▣ Nanog (+)	7,251	86.3	36.3
■ Samples/64 65 89 UN/All Events	20,000	####	100.0
■ Samples/64 65 89 UN/P1	9,583	47.9	47.9

SNP analysis

according to WP3 SOP Preparation of DNA
and RNA samples for Illumina arrays

- Passage 11
- Identity to parent fibroblasts confirmed
- Karyotype abnormalities none
- For details and raw data see StemDB