

# Certificate of analysis

SFC064-03-42

Signature: Theodore Latsis: 08-12-2014

Supervisor signature: Lyle Armstrong

Date: 08-12-2014

# Source of fibroblasts and reprogramming information

- SF064 from University of Luebeck
- Reprogrammed at UNEW
- Reprogrammed on 31-07-2014 at passage 6
- Cytotune 2

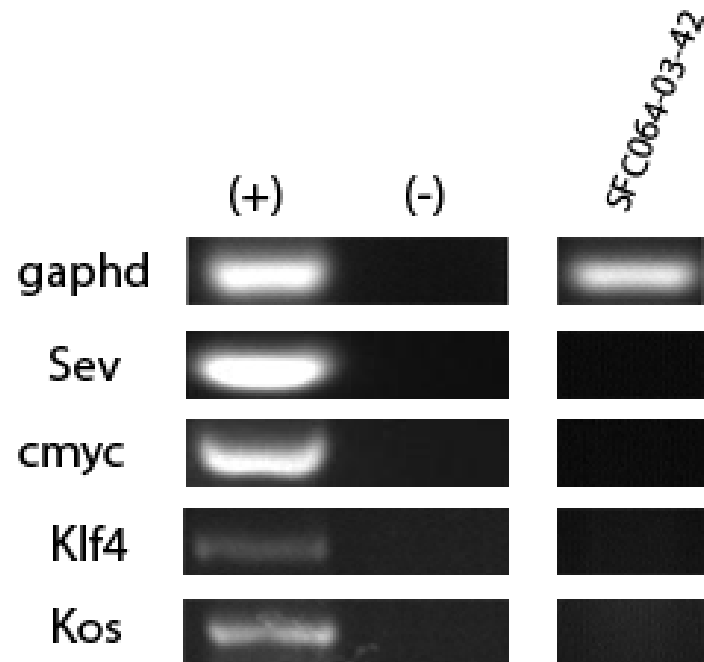
# Comments

- iPSC clone grows very slow, it takes 20 days to reach confluency needed for passaging
- iPSC colonies stopped developing after 2-3 passages in matrigel: three attempts carried out
- Early passage feeder based vials are available



**PHOTO OF COLONY ONE WEEK AFTER PASSAGING**

Sendai clearance:  
according to WP3 SOP15  
undetectable at passage 11



# Mycoplasma test:

## According to MycoAlert Lonza LT07-318

### Undetectable at passage 11

> 1.2		Mycoplasma Contaminated			Positive Control	Negative Control
0.9-1.2		Status Unknown - Restest within 24 hours			0.0532	0.069
0-0.9		Mycoplasma Free			2.768	0.0112
				<b>Owner</b>	Theodore Latsis	
				<b>Date</b>	04/12/2014	
				<b>Cell name</b>	SFC-064-03-42	
				<b>A</b>	0.0123	
				<b>B</b>	0.0065	
				<b>B/A</b>	0.5285	

# SNP analysis

according to WP3 SOP Preparation of DNA  
and RNA samples for Illumina arrays

- Passage 11