

# Certificate of analysis

SFC103-03-01

# Viability post-thaw and Morphology according to SOP19 passage 10

- Cell count immediately post-thaw: 1M
- Viability immediately post-thaw: 88%
- Prone to differentiation

Photo at 48h post-thaw:

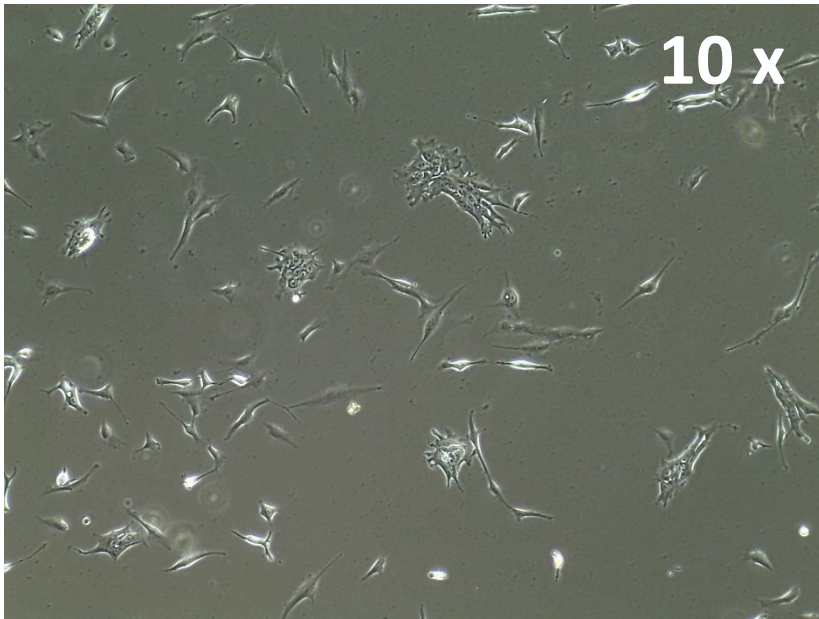
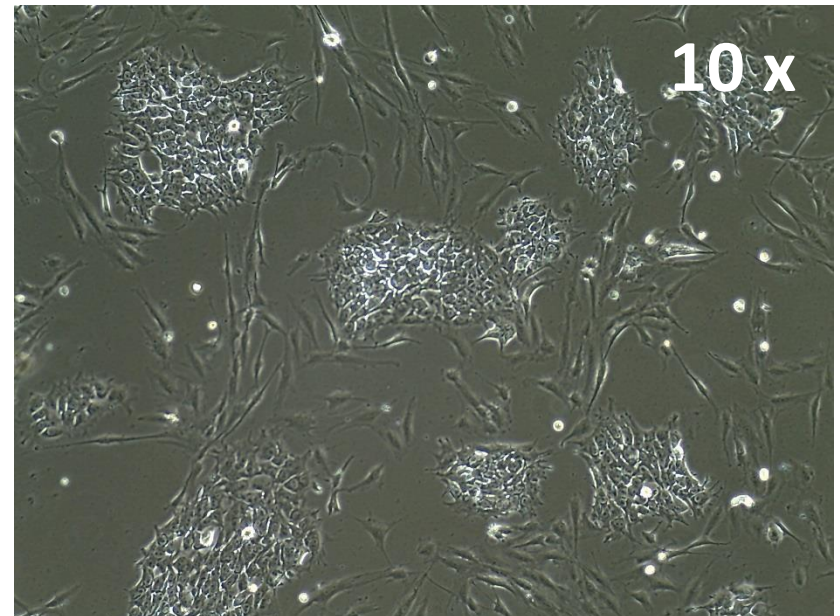


Photo at day 5 post-thaw:



Sendai clearance  
according to WP3 SOP15:  
undetectable at passage 10

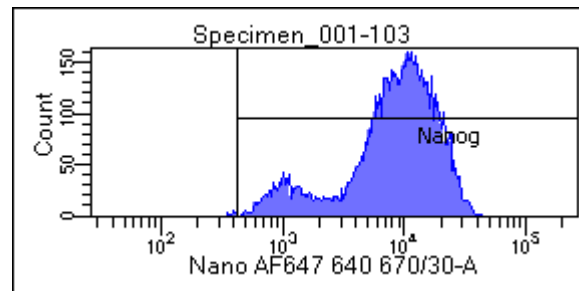
Mycoplasma test  
According to MycoAlert Lonza LT07-318:  
Undetectable at passage 10

> 1.2	<b>Mycoplasma Contaminated</b>	Positive Control	Negative Control
0.9-1.2	Status Unknown - Retest within 24 hours	2069	3338
0-0.9	<b>Mycoplasma Free</b>	73060	602.4
		<b>35.3117448</b>	<b>0.180467346</b>

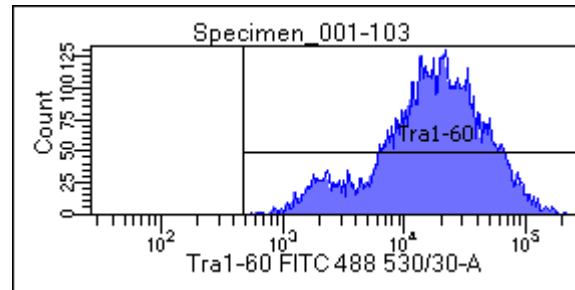
Date	13/12/2017
Cell name	SFC103-03-01
A	448.2
B	302.9
B/A	<b>0.675814369</b>

# Flow cytometric analysis according to WP3 SOP 20 and 21 passage 10

Nanog: 99.3%



Tra1-60: 99.8%



# SNP analysis

according to WP3 SOP Preparation of DNA  
and RNA samples for Illumina arrays

- Passage 10
- No abnormalities detected

