



Certificate of analysis

SFC834-03-10

Operator: Jane Vowles

Date:04/09/2014

Supervisor: Sally Cowley

Date:12/10/2014

Signature:

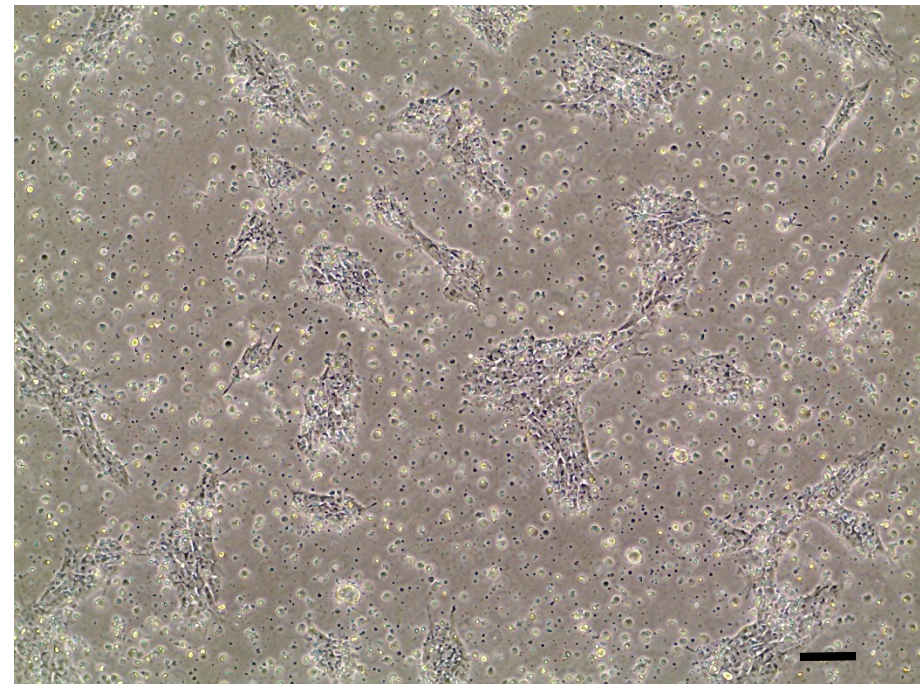
SACowley

Source of fibroblasts and reprogramming information

- SF834 from UOXF 13/09/2012
- Reprogrammed at UOXF JMSCF JV
- Reprogrammed on 17/07/13 at passage 4
- Cytotune v1 WP3 SOP10

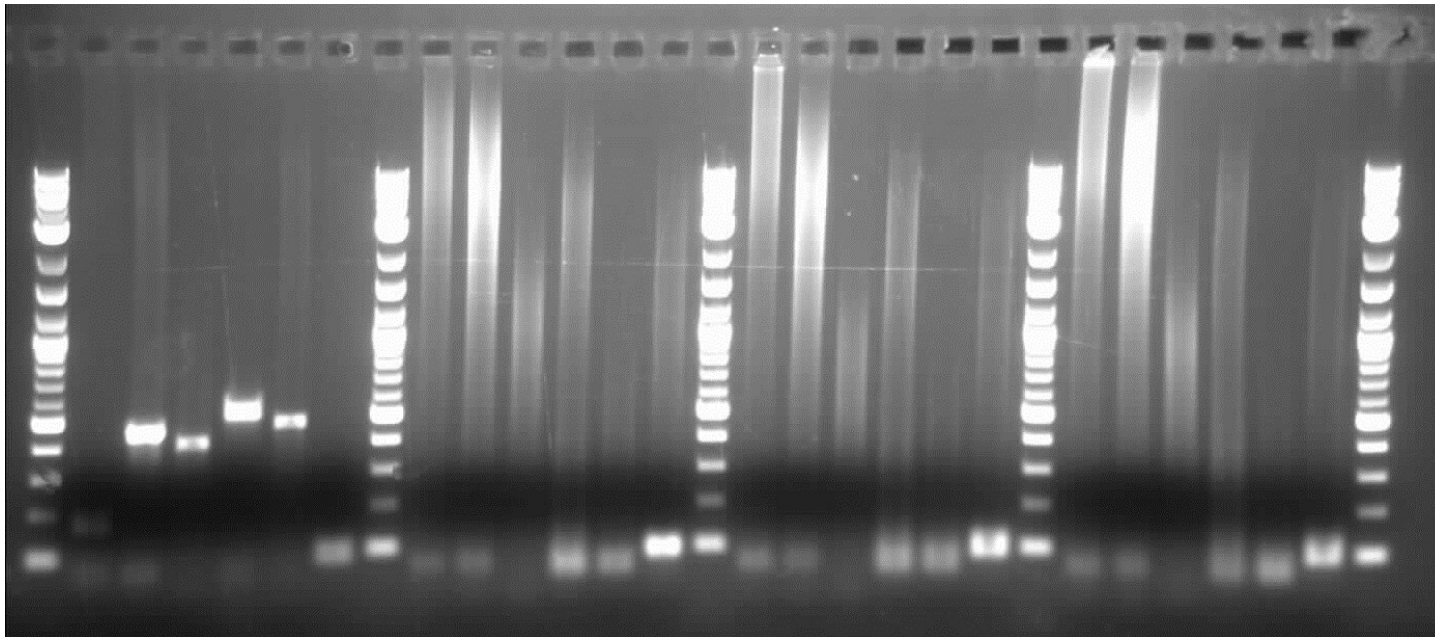
Viability post-thaw and Morphology according to SOP19 passage 17

- Cell count immediately post-thaw 5.17×10^6
- Viability immediately post-thaw 81%
- Photo at 24h post-thaw (scale bar = $100\mu\text{m}$):



Sendai clearance: according to WP3 SOP15 undetectable at passage 17

Log2 ladder
Sendai virus
Sox2
Klf4
C-Myc
Oct3/4
Actin
Log2 ladder
Sendai virus
Sox2
Klf4
C-Myc
Oct3/4
Actin
Log2 ladder
Sendai virus
Sox2
Klf4
C-Myc
Oct3/4
Actin
Log2 ladder
Sendai virus
Sox2
Klf4
C-Myc
Oct3/4
Actin



+ control

SFC834-03-01

SFC834-03-03

SFC834-03-10

Product sizes: SeV 181bp; SeV-Sox 451bp; SeV-Klf 410bp; SeV-Myc 532bp; SeV-Oct 483bp; Actin 92bp

Mycoplasma test:

According to MycoAlert Lonza LT07-318

Undetectable at passage 17

Sample	Initial	Passage no.	Reading 1	Reading 2	Ratio / Status
+ve Control			5.821	128.04	22.00
-ve Control			8.422	0.644	0.08
1. SFC 834-03-10	CB	p17	3.634	0.975	0.27

Results mean

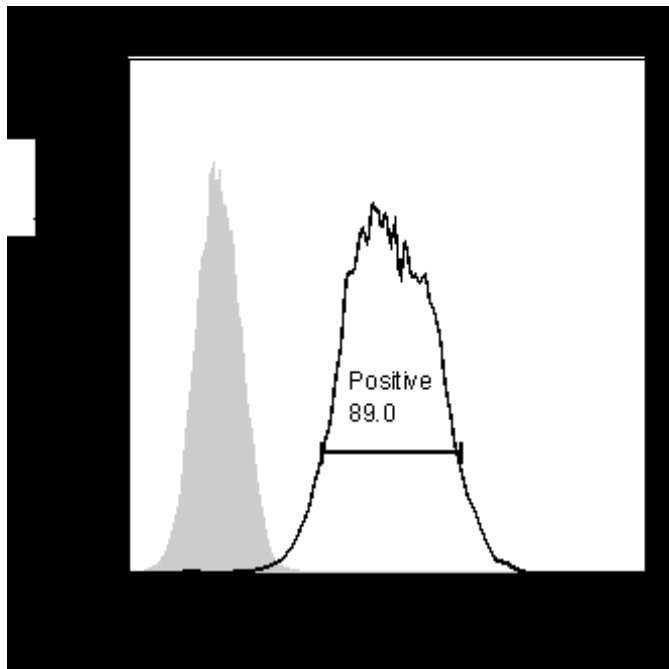
Ratio **0 - 0.999** negative for mycoplasma

Ratio **1 – 1.3** Borderline Result (retest required)

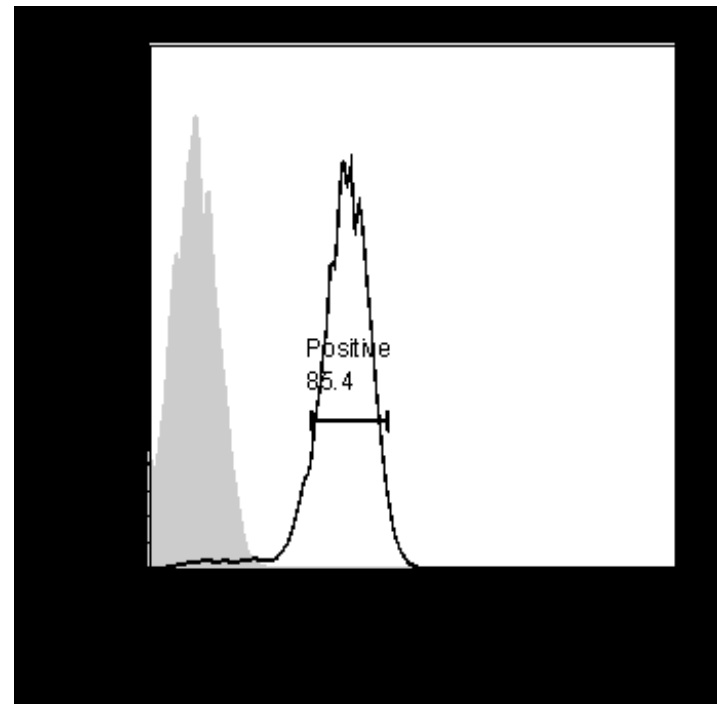
Ratio above **1.3** positive for mycoplasma

Flow cytometric analysis according to WP3 SOP 20 and 21 passage 17

Tra-1-60:



NANOG:



SNP analysis

according to WP3 SOP Preparation of DNA and RNA samples for Illumina arrays

- Passage 17
- Identity to parent fibroblasts confirmed
- Karyotype abnormalities acceptable: C15 LOH as observed in parent fibroblast; also modest allelic imbalance C6
- For details and raw data see StemDB