

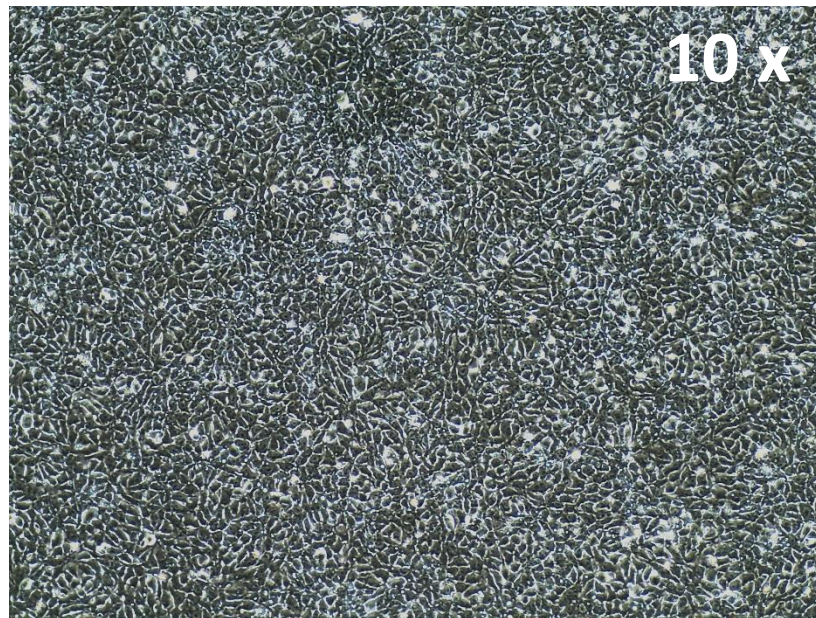
# Certificate of analysis

SFC159-03-01

# Viability post-thaw and Morphology according to SOP19 passage 15

- Cell count immediately post-thaw: 2.9M
- Viability immediately post-thaw: 95%

Photo at 24h post-thaw:



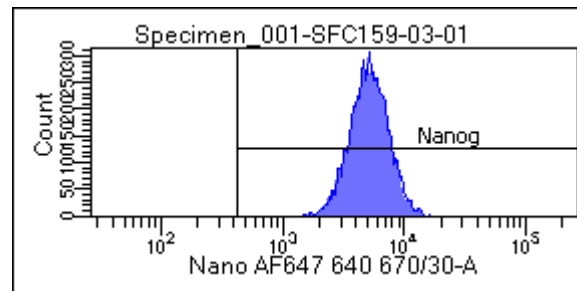
Sendai clearance  
according to WP3 SOP15:  
undetectable at passage 15

Mycoplasma test  
According to MycoAlert Lonza LT07-318:  
Undetectable at passage 15

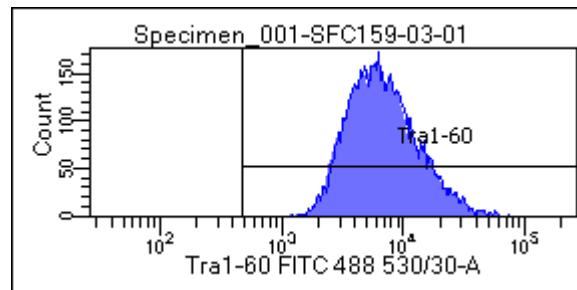
					Date	14/03/2018
> 1.2	<b>Mycoplasma Contaminated</b>	Positive Control	Negative Control		Cell name	SFC159
0.9-1.2	Status Unknown - Retest within 24 hours	2069	3338		A	1204
0-0.9	<b>Mycoplasma Free</b>	73060	602.4		B	466.7
		<b>35.3117448</b>	<b>0.180467346</b>		B/A	0.387624585

# Flow cytometric analysis according to WP3 SOP 20 and 21 passage 15

Nanog: 99.9%



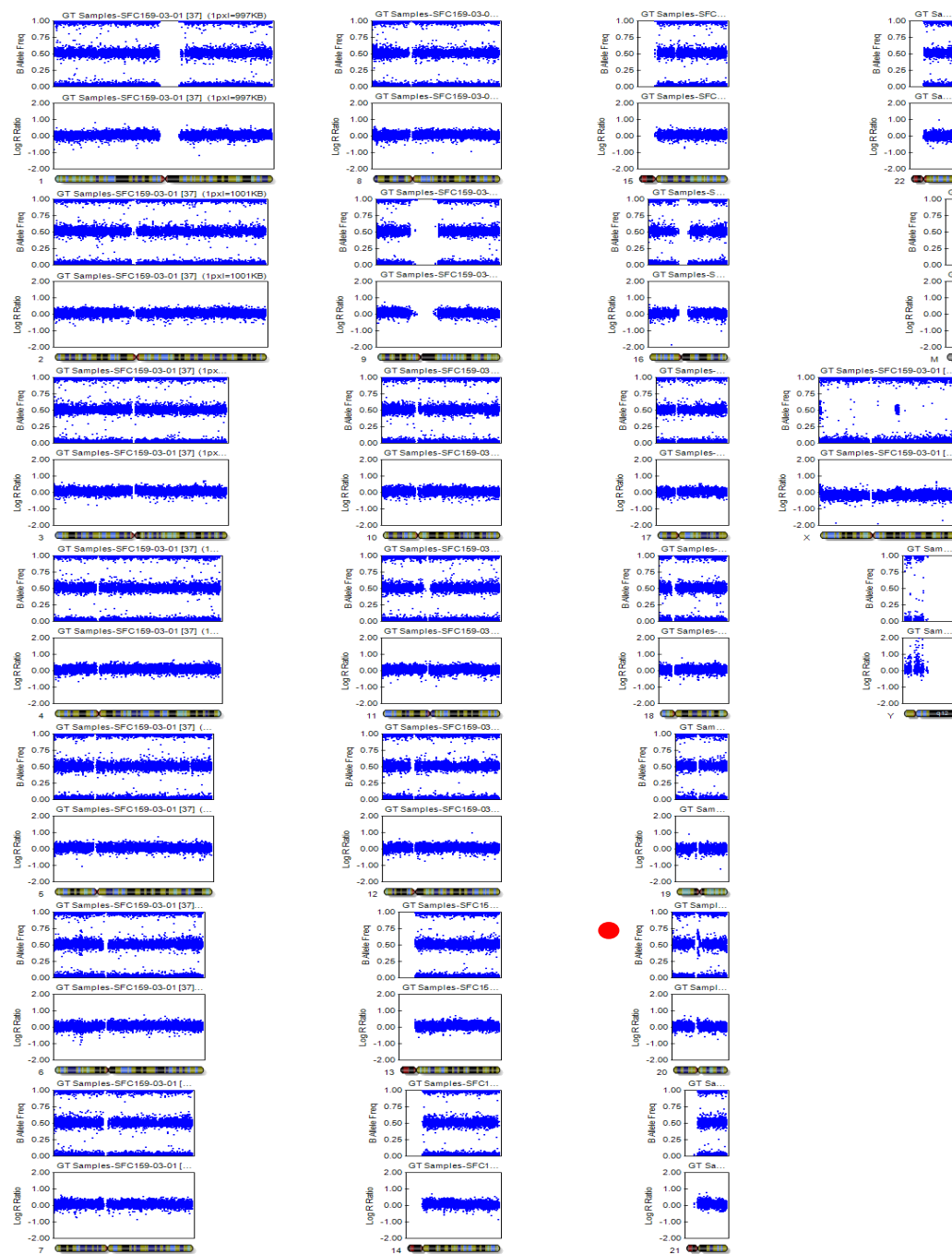
Tra-1-60: 100%



# SNP analysis

according to WP3 SOP Preparation of DNA  
and RNA samples for Illumina arrays

- Passage 15



Red dot:  
Abnormality  
detected  
(insertion)