

Certificate of analysis

SFC055-04-02

Signature: Katja Gassner Date: 11.12.2014

Supervisor signature: Lyle Armstrong

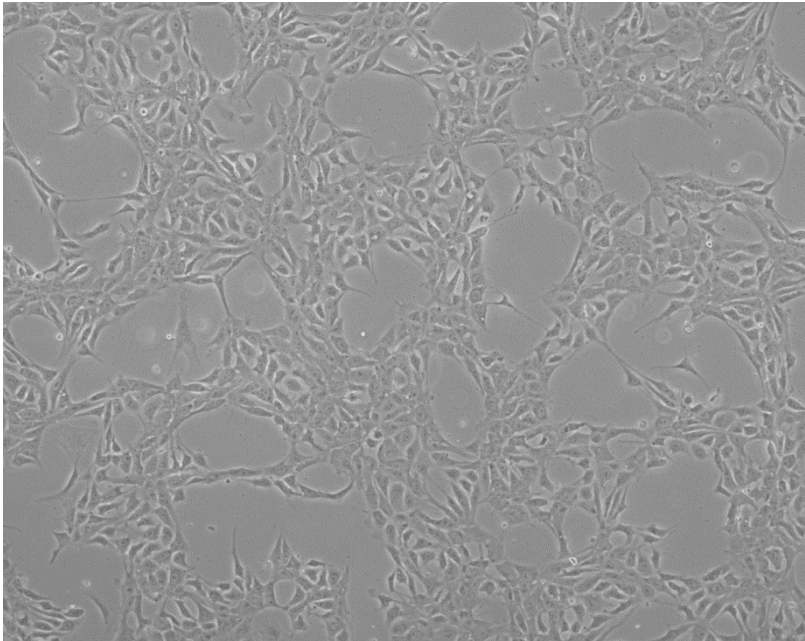
Date: 11.12.2014

Source of fibroblasts and reprogramming information

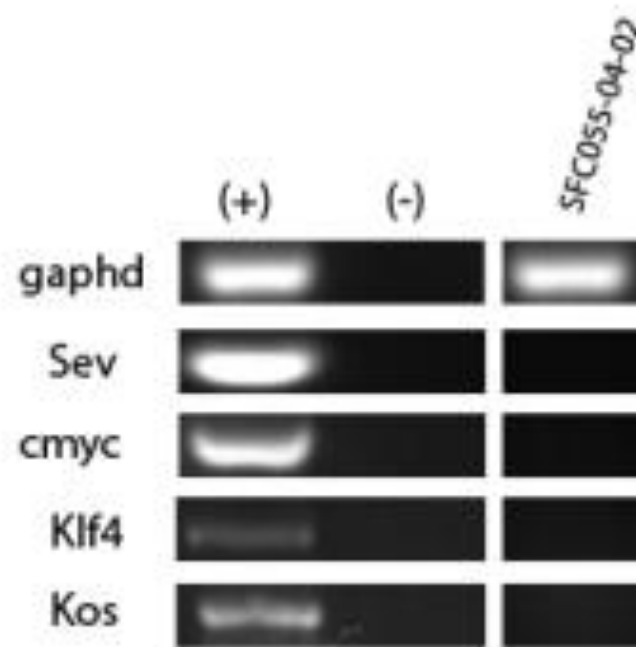
- SF055 from UOXF
- Reprogrammed at UNEW
- Reprogrammed on 21/03/2014 at passage 7
- Cytotune 2

Viability post-thaw and Morphology according to SOP19 passage 13

- Cell count immediately post-thaw 1.8×10^6
- Viability immediately post-thaw 87%
- Photo at 24h post-thaw:



Sendai clearance:
according to WP3 SOP15
undetectable at passage 13



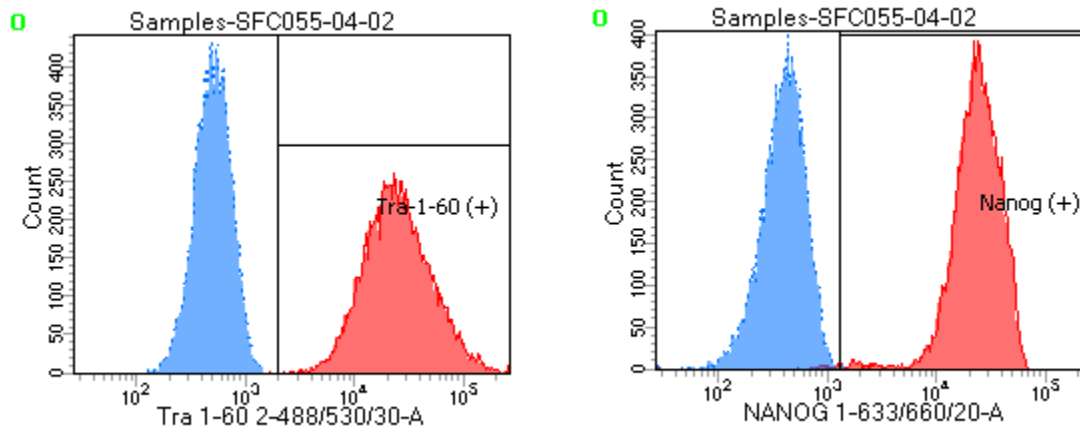
Mycoplasma test:

According to MycoAlert Lonza LT07-318

Undetectable at passage 13

| | | | | | | |
|-----------|--------------|--|--|--|------------------|------------------|
| Owner | KG | | | | | |
| Date | 08/12/2014 | | | | | |
| Cell name | SFC055-04-02 | | | | | |
| A | 0.0263 | | | | | |
| B | 0.0123 | | | | | |
| B/A | 0.467680608 | | | | | |
| | | | | | | |
| > 1.2 | | Mycoplasma Contaminated | | | Positive Control | Negative Control |
| 0.9-1.2 | | Status Unknown - Restest within 24 hours | | | 0.0341 | 0.1004 |
| 0-0.9 | | Mycoplasma Free | | | 2.243 | 0.0068 |
| | | | | | 65.7771261 | 0.067729084 |

Flow cytometric analysis according to WP3 SOP 20 and 21 passage 13



Tube: SFC055-04-02

| Population | #Events | %Parent | %Total |
|-------------------------------|---------|---------|--------|
| ■ All Events | 20,000 | #### | 100.0 |
| ■ Cells | 12,029 | 60.1 | 60.1 |
| ☒ Tra-1-60 (+) | 11,991 | 99.7 | 60.0 |
| ☒ Nanog (+) | 11,871 | 98.7 | 59.4 |
| ■ Samples/katja Un/All Events | 20,000 | #### | 100.0 |
| ■ Samples/katja Un/P1 | 11,422 | 57.1 | 57.1 |

SNP analysis

according to WP3 SOP Preparation of DNA and RNA samples for Illumina arrays

- Passage 13
- Identity to parent fibroblasts confirmed
- Karyotype abnormalities: none detected
- For details and raw data see StemDB

Comment

- Prone to differentiation