



Certificate of analysis

SFC830-04-09

Operator: J Vowles

Date: 07/09/15

Supervisor: Sally Cowley

Date: 01.03.2016

Signature:

SACowley

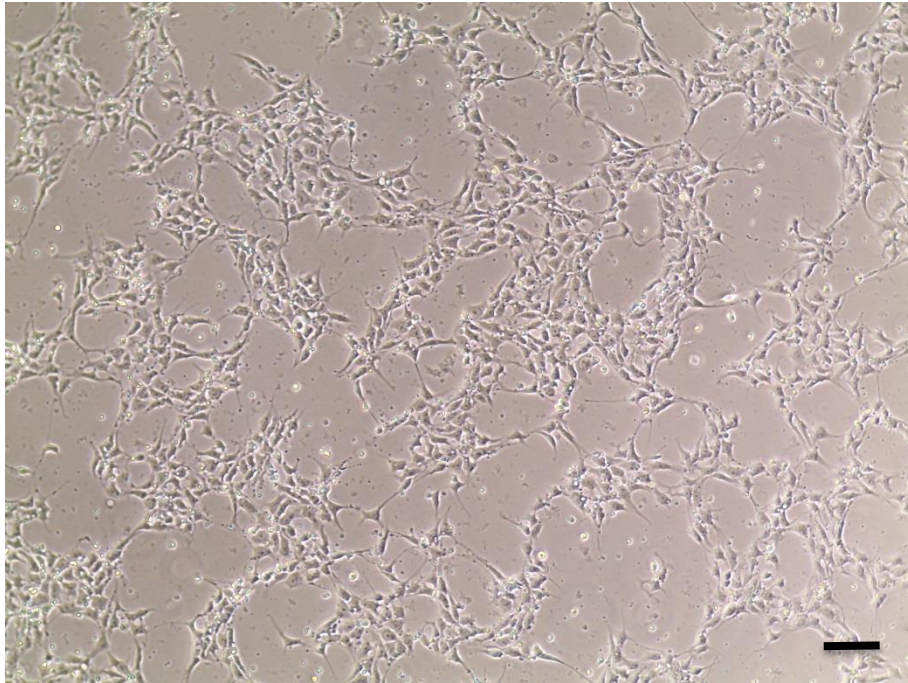
Source of fibroblasts and reprogramming information

- SF830 from UCL
- Reprogrammed at UOXF S
- Reprogrammed on 20/01/2015 at passage p5
- Cytotune v2 WP3 SOP10

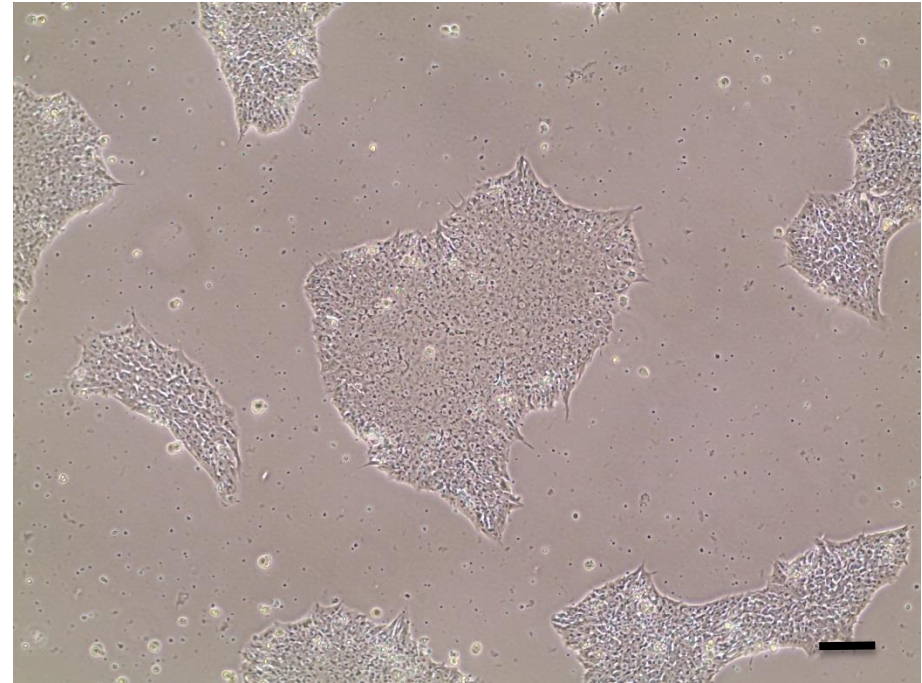
Viability post-thaw and Morphology according to SOP19 passage p15

- Cell count immediately post-thaw 1.52×10^6
- Viability immediately post-thaw 83%
- Photos post-thaw (scale bar = 100 μ m):

24h post-thaw 80% plated

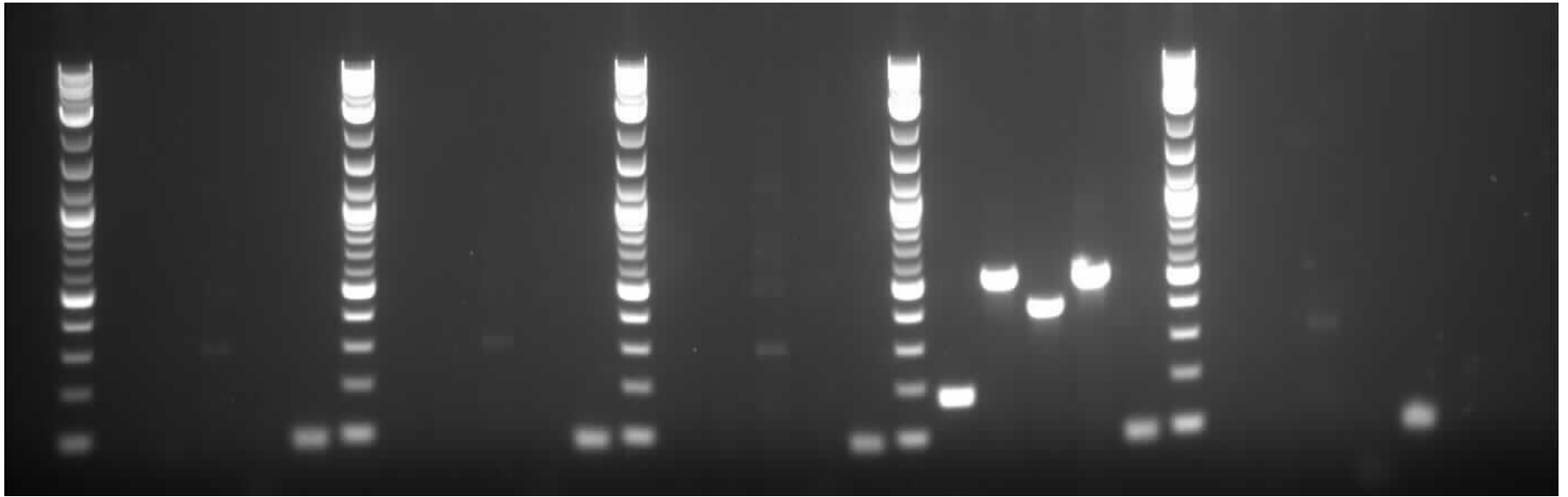


Day 4 post-thaw 20% plated



Sendai clearance: according to WP3 SOP15 undetectable at passage 15

2Log ladder
Sendai virus
KOS
Klf4
C-Myc
Actin
2Log ladder
Sendai virus
KOS
Klf4
C-Myc
Actin
2Log ladder
Sendai virus
KOS
Klf4
C-Myc
Actin
2Log ladder
Sendai virus
KOS
Klf4
C-Myc
Actin
2Log ladder
Sendai virus
KOS
Klf4
C-Myc
Actin



SFC830-04-09

SFC871-03-04

SFC871-03-09

+ control

- control

Non-specific band is visible in Klf lane

Product sizes: SeV 181bp; KOS 528bp; SeV-Klf 410bp; SeV-Myc 532bp; Actin 92bp

Mycoplasma Test:

According to MycoAlert Lonza LT07-318 undetectable at passage p15

Sample	Clone	Passage number	Initial	Reading 1	Reading 2	Ratio/Status
+ve control				7.64	199.10	26.07
-ve control				9.31	0.60	0.06
7	SFC830-04-09	p9+6	CB	2.75	0.94	0.34

Results mean

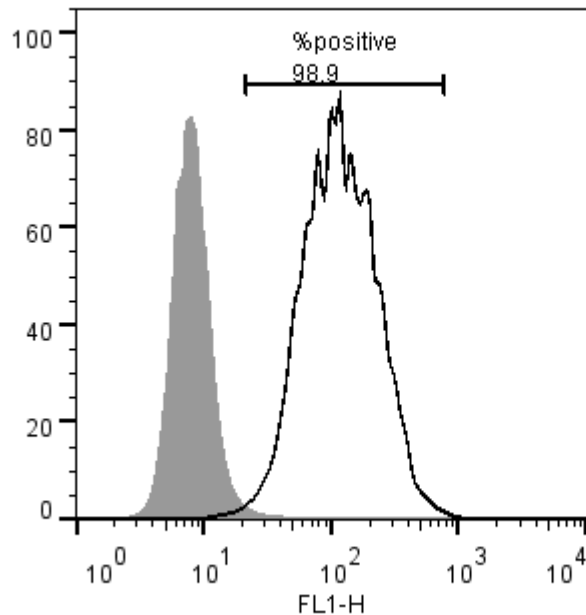
Ratio **0 - 0.999** negative for mycoplasma

Ratio **1 – 1.3** Borderline Result (retest required)

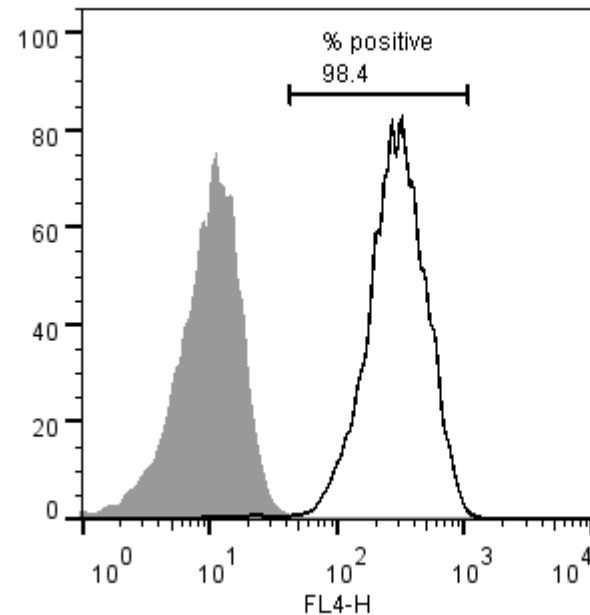
Ratio above **1.3** positive for mycoplasma

Flow cytometric analysis according to WP3 SOP 20 and 21 passage p15

Tra-1-60:



NANOG:



SNP analysis

according to WP3 SOP Preparation of DNA and RNA samples for Illumina arrays

- Passage p15
- Identity to parent fibroblasts confirmed
- Karyotype abnormalities: none detected
- For details and raw data see StemDB