

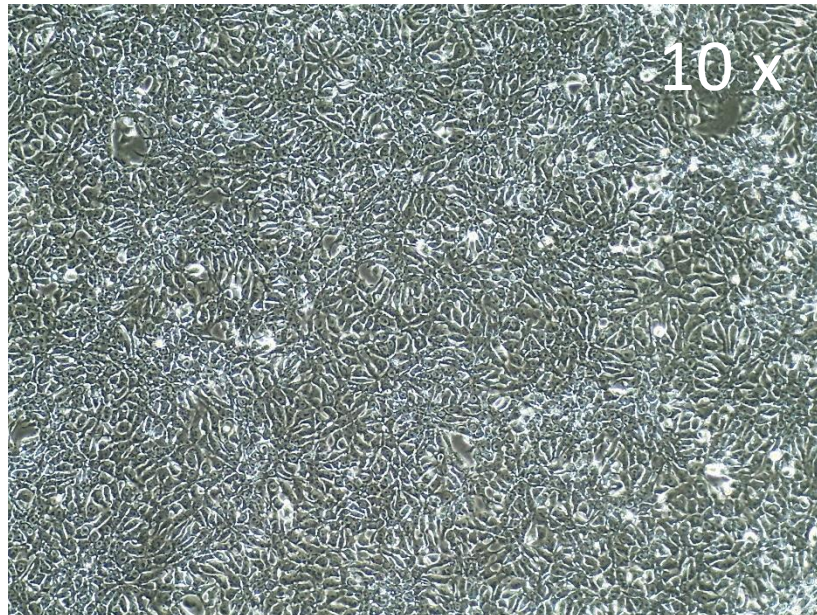
Certificate of analysis

SFC297-03-01

Viability post-thaw and Morphology according to SOP19 passage 15

- Cell count immediately post-thaw: 2.9M
- Viability immediately post-thaw: 95%

Photo at 24h post-thaw:



Sendai clearance
according to WP3 SOP15:
undetectable at passage 15

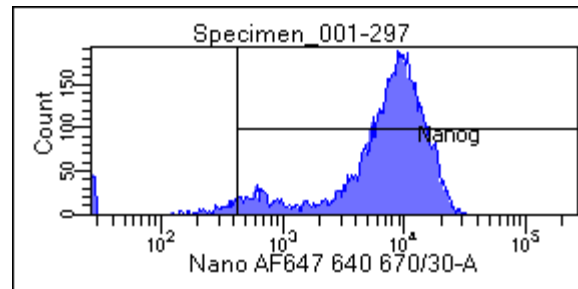
Mycoplasma test
According to MycoAlert Lonza LT07-318:
Undetectable at passage 15

> 1.2	Mycoplasma Contaminated	Positive Control	Negative Control	
0.9-1.2	Status Unknown - Retest within 24 hours	2069	3338	
0-0.9	Mycoplasma Free	73060	602.4	
		35.3117448	0.180467346	

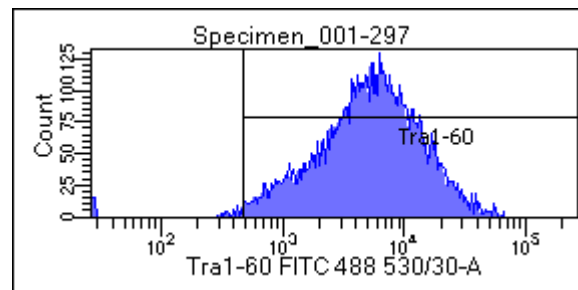
Date	21/02/2018
Cell name	SFC297
A	879.4
B	249.7
B/A	0.283943598

Flow cytometric analysis according to WP3 SOP 20 and 21 passage 15

Nanog: 94.9%



Tra-1-60: 98.3%



SNP analysis

according to WP3 SOP Preparation of DNA
and RNA samples for Illumina arrays

- Passage 15
- No abnormalities detected

