



# Certificate of analysis

SFC841-03-01

Operator: Jane Vowles

Date: 08/01/2015

Supervisor: Sally Cowley

Date: 30.06.2015

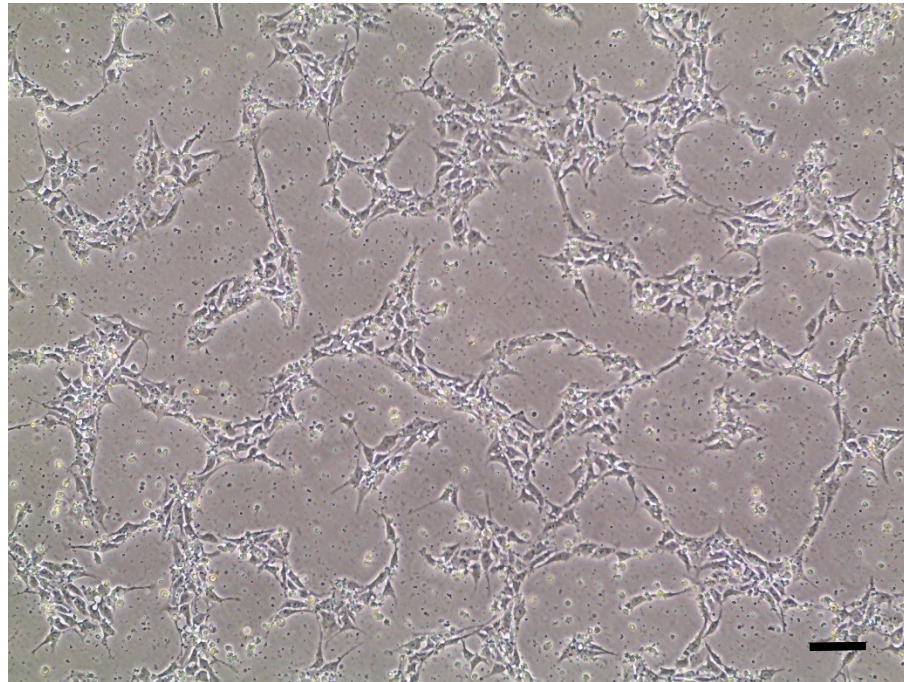
Signature: *SACowley*

# Source of fibroblasts and reprogramming information

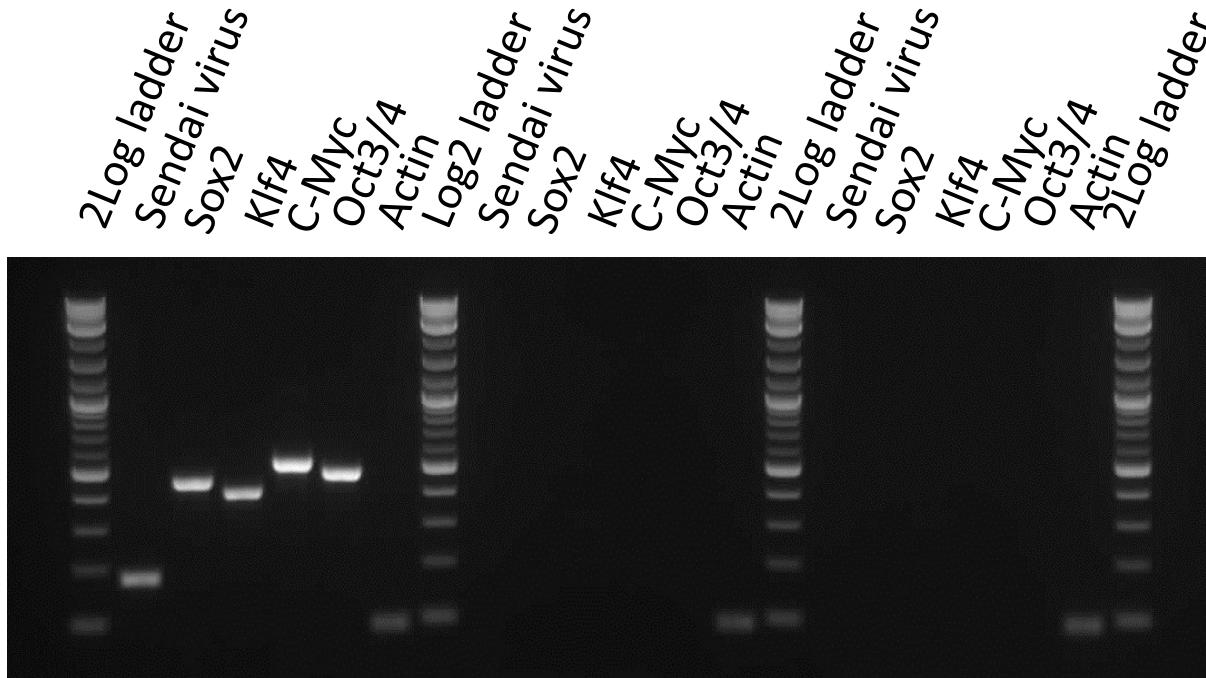
- SF841 from UOXF 01/11/2010
- Reprogrammed at UOXF JMSCF by JV
- Reprogrammed on 13/12/2012 at passage 5
- Cytotune v1 WP3 SOP10

# Viability post-thaw and Morphology according to SOP19 p28

- Cell count immediately post-thaw  $2.27 \times 10^6$
- Viability immediately post-thaw 78.6%
- Photo at 24h post-thaw (scale bar =  $100\mu\text{m}$ ):



# Sendai clearance: according to WP3 SOP15 undetectable at passage 28



+ve control

-ve control

**SFC841-03-01**

Product sizes: SeV 181bp; SeV-Sox 451bp; SeV-Klf 410bp; SeV-Myc 532bp; SeV-Oct 483bp; Actin 92bp

# Mycoplasma Test:

## According to MycoAlert Lonza LT07-318 undetectable at passage 29

Sample	Passage	Initials	Reading 1	Reading 2	Ratio / Status
+ve Control			5.627	156.59	<b>27.83</b>
-ve Control			7.262	0.671	<b>0.092</b>
SFC 841-03-01	p29	JV	1.877	0.742	<b>0.395</b>

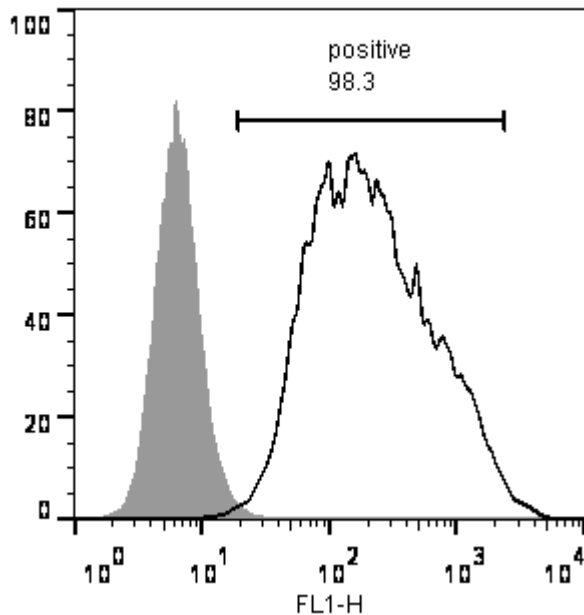
Ratio **0 - 0.999** negative for mycoplasma

Ratio **1 – 1.3** Borderline Result (retest required)

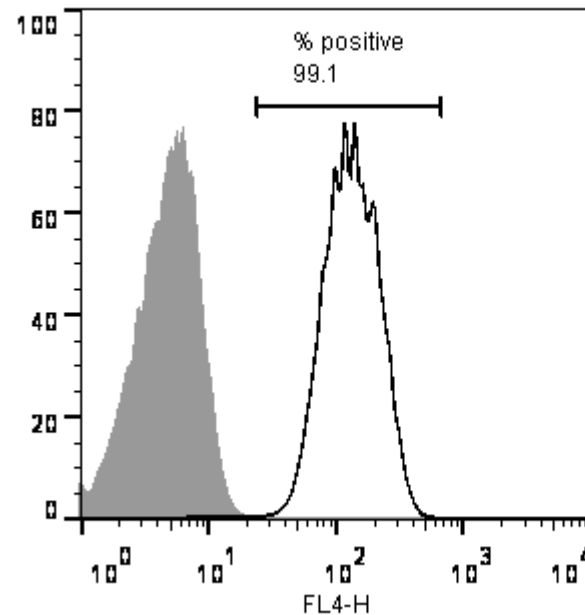
Ratio above **1.3** positive for mycoplasma

# Flow cytometric analysis according to WP3 SOP 20 and 21 passage 29

Tra-1-60:



NANOG:



# SNP analysis

according to WP3 SOP Preparation of DNA and RNA samples for Illumina arrays

- Passage 28
- Identity to parent fibroblasts confirmed
- Karyotype abnormalities: none detected
- For details and raw data see StemDB