

# Certificate of analysis

SFC361-03-01

# Viability post-thaw and Morphology according to SOP19 passage 10

- Cell count immediately post-thaw: 2,6M  
Viability immediately post-thaw: 96%

Photo at 24h post-thaw:

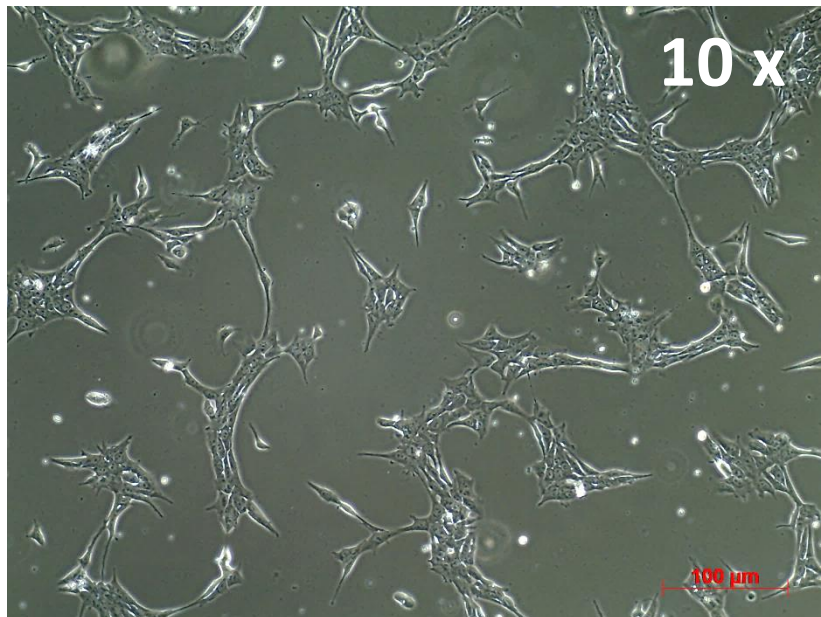
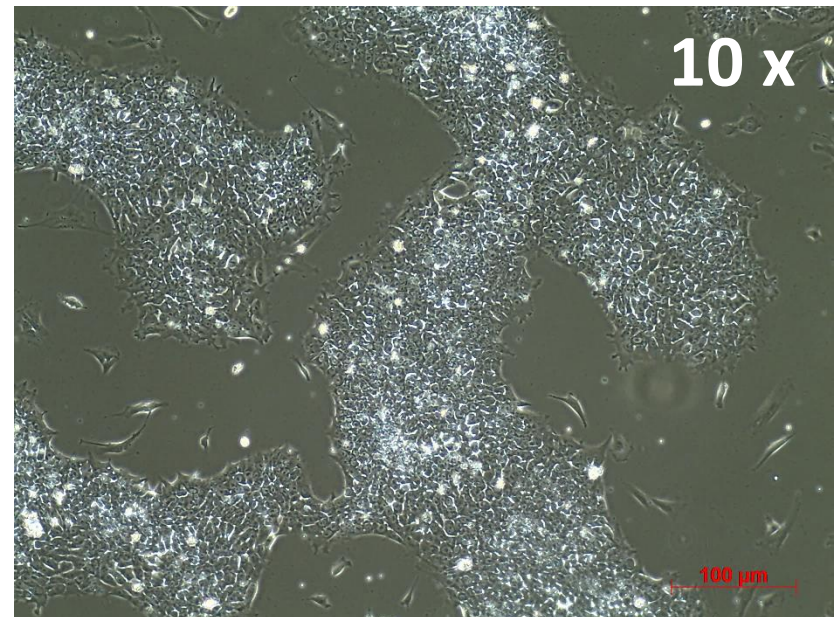


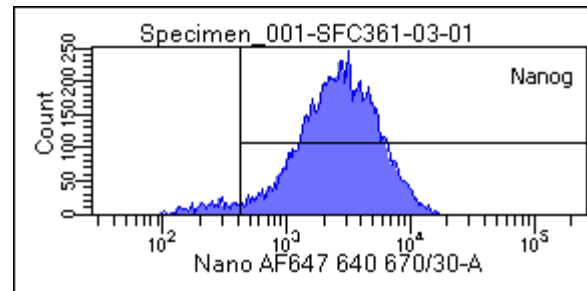
Photo at day 5 post-thaw:



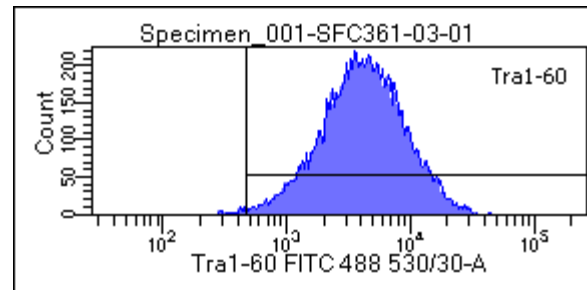


# Flow cytometric analysis according to WP3 SOP 20 and 21 passage 10

Nanog: 94.3%



Tra-1-30: 98.7%



# SNP analysis

according to WP3 SOP Preparation of DNA  
and RNA samples for Illumina arrays

- Passage 10
- No abnormalities detected

