



Certificate of analysis

SFC872-03-03

Operator: Jane Vowles

Date: 11/12/2015

Supervisor: Sally Cowley

Date: 01.03.2016

Signature:

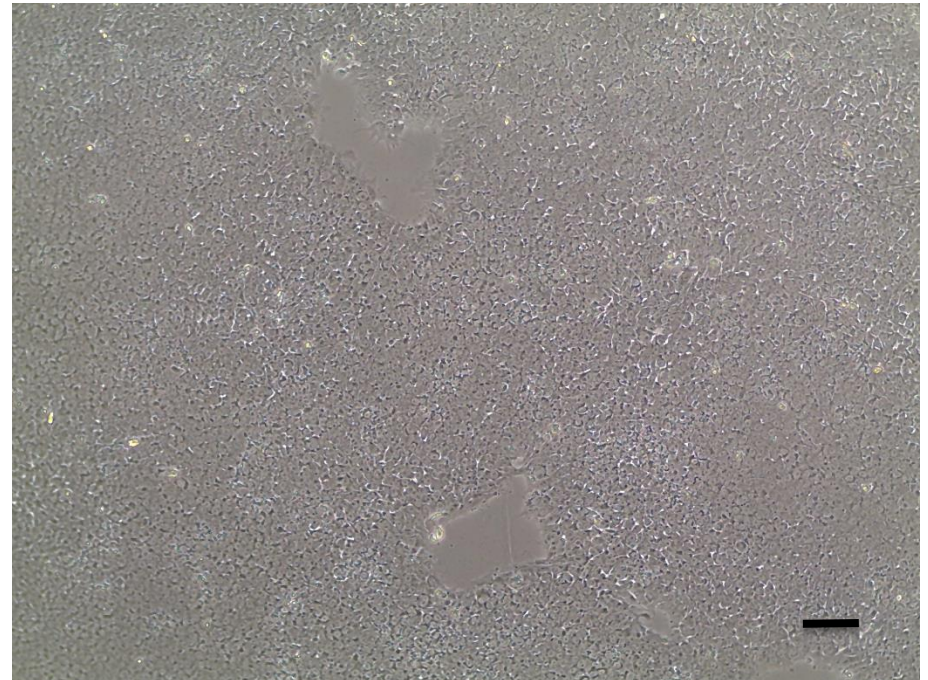
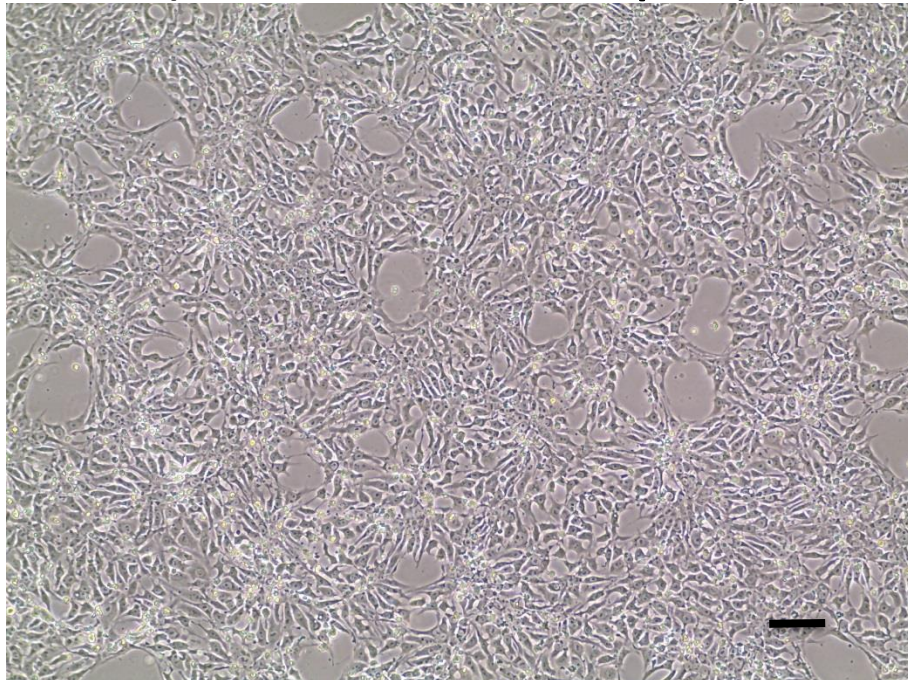
SACowley

Source of fibroblasts and reprogramming information

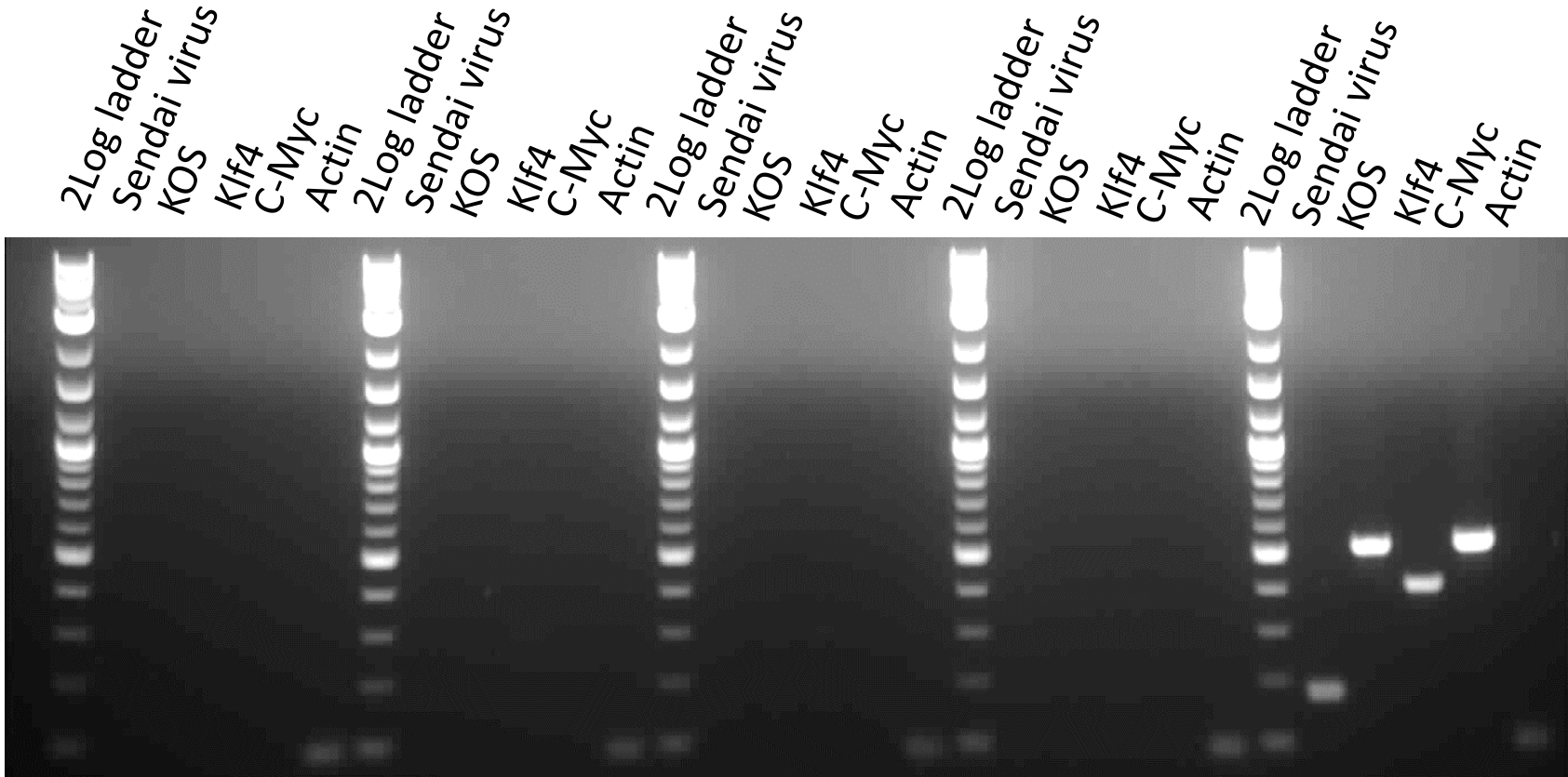
- SF872 from UOXF
- Reprogrammed at UOXF JMSCF
- Reprogrammed on 28/05/2015 at passage 4
- Cytotune v2 WP3 SOP10

Viability post-thaw and Morphology according to SOP19 passage 13

- Cell count immediately post-thaw 3.4×10^6
- Viability immediately post-thaw 93%
- Photo at 24h and day 4 post-thaw (scale bar = 100 μ m):



Sendai clearance: according to WP3 SOP15 undetectable at passage 13



SFC870-03-05

SFC872-03-05

SFC872-03-02

SFC872-03-03

+ control

Product sizes: SeV 181bp; KOS 528bp; SeV-Klf 410bp; SeV-Myc 532bp; Actin 92bp

Mycoplasma Test:

According to MycoAlert Lonza LT07-318 undetectable at passage 13

| Sample | Clone | Passage number | Initial | Reading 1 | Reading 2 | Ratio/Status |
|-------------|--------------|----------------|---------|-----------|-----------|--------------|
| +ve control | | | | 8.20 | 284.00 | 34.65 |
| -ve control | | | | 8.28 | 0.93 | 0.11 |
| 5 | SFC872-03-03 | p13 | JV | 0.98 | 0.94 | 0.96 |

Results mean

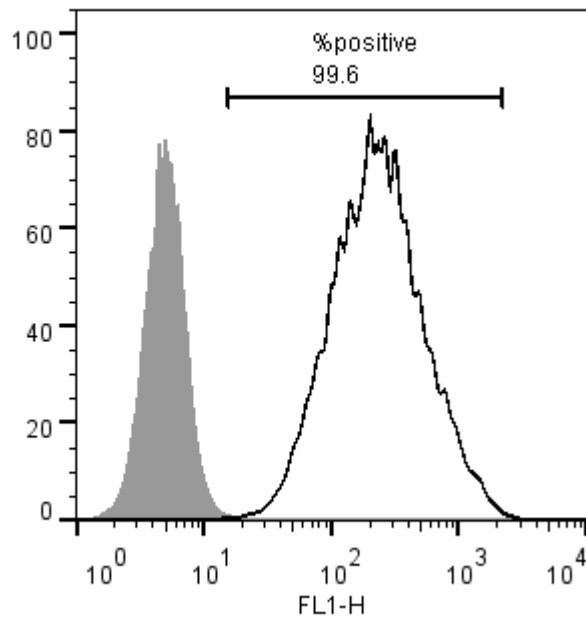
Ratio **0 - 0.999** negative for mycoplasma

Ratio **1 – 1.3** Borderline Result (retest required)

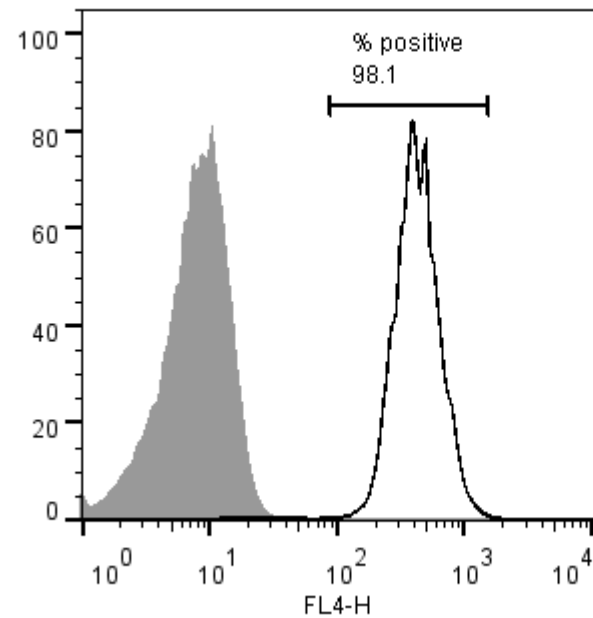
Ratio above **1.3** positive for mycoplasma

Flow cytometric analysis according to WP3 SOP 20 and 21 passage p13

Tra-1-60:



NANOG:



SNP analysis

according to WP3 SOP Preparation of DNA
and RNA samples for Illumina arrays

- Passage 13
- Identity to parent fibroblasts confirmed
- Karyotype abnormalities: none detected
- For details and raw data see StemDB