

Certificate of analysis

SFC256-03-01

Viability post-thaw and Morphology according to SOP19 passage 10

- Cell count immediately post-thaw: 2,1M
- Viability immediately post-thaw: 95%

Photo at 24h post-thaw:

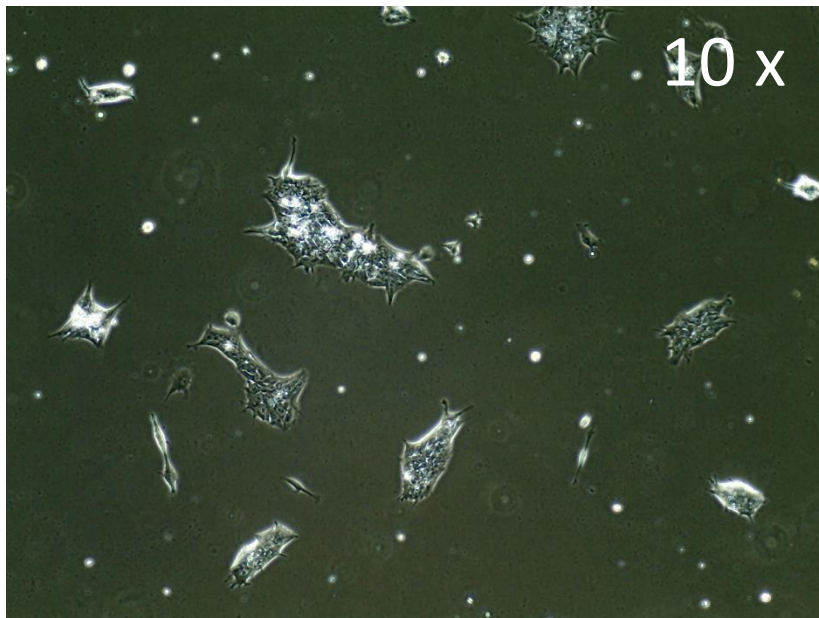
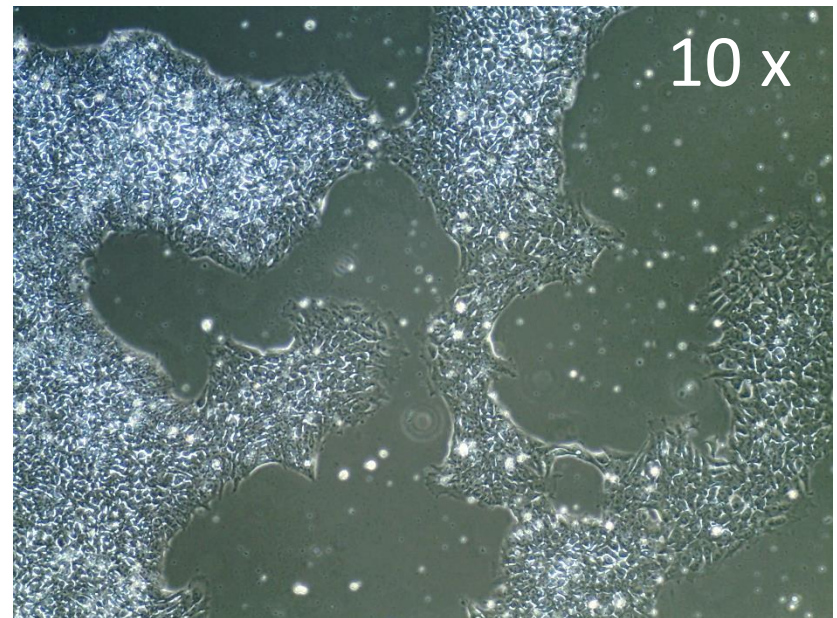


Photo at day 5 post-thaw:



Sendai clearance
according to WP3 SOP15:
undetectable at passage 10

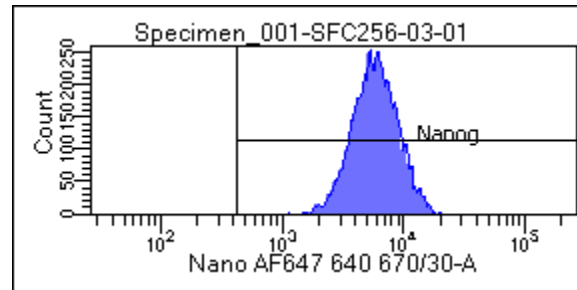
Mycoplasma test
According to MycoAlert Lonza LT07-318:
Undetectable at passage 10

> 1.2	Mycoplasma Contaminated	Positive Control	Negative Control
0.9-1.2	Status Unknown - Retest within 24 hours	2069	3338
0-0.9	Mycoplasma Free	73060	602.4
		35.3117448	0.180467346

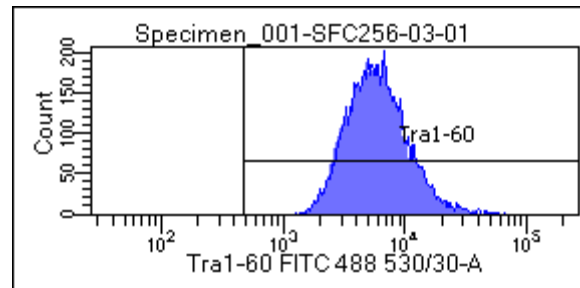
Date	14/03/2018
Cell name	SFC256
A	814.9
B	384.4
B/A	0.471714321

Flow cytometric analysis according to WP3 SOP 20 and 21 passage 10

Nanog: 100%



Tra-1-60: 100%



SNP analysis

according to WP3 SOP Preparation of DNA
and RNA samples for Illumina arrays

- Passage 10

Red dot:
Abnormality
(insertion)

