



Certificate of analysis

SFC829-03-02

Operator: Walther Haenseler Date: 31.08.2014

Supervisor signature: Sally Cowley Date: 31.08.2014

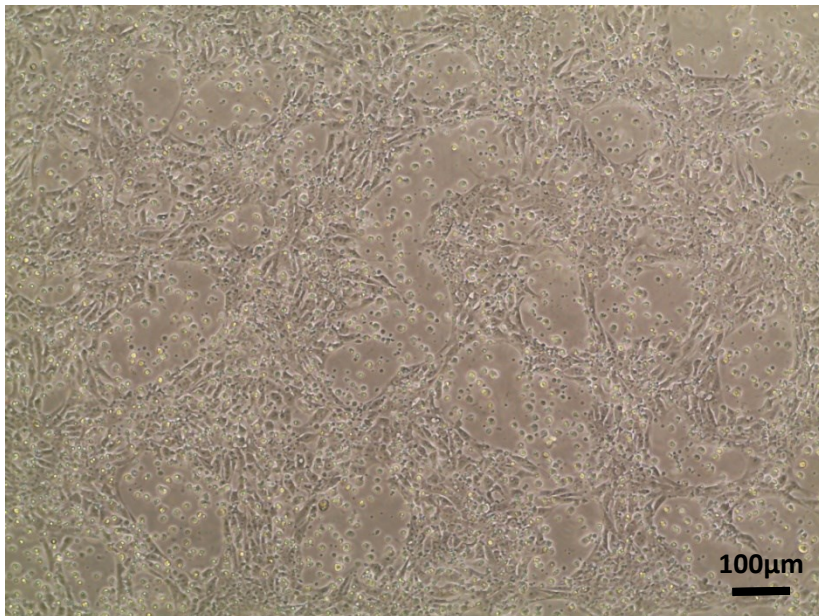
SACowley

Source of fibroblasts and reprogramming information

- SF829 from UCL 21/08/2011
- Reprogrammed at UOXF JMSCF WH
- Reprogrammed on 03/10/2013 at passage 3
- Cytotune v1 WP3 SOP10

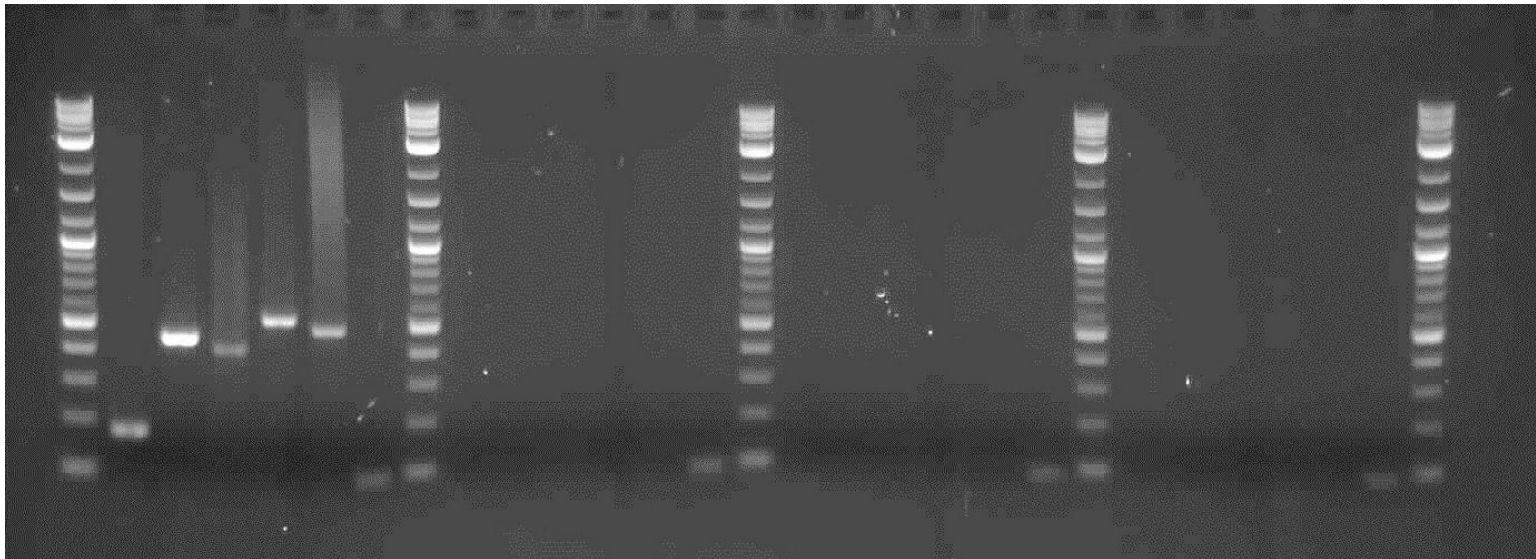
Viability post-thaw and Morphology according to SOP19 passage 18

- Cell count immediately post-thaw 4.35×10^6
- Viability immediately post-thaw 82.4%
- Photo at 24h post-thaw:



Sendai clearance: according to WP3 SOP15 undetectable at passage 18

Log2 ladder
Sendai virus
Sox2
Klf4
C-Myc
Oct3/4
Actin
Log2 ladder
Sendai virus
Sox2
Klf4
C-Myc
Oct3/4
Actin
Log2 ladder
Sendai virus
Sox2
Klf4
C-Myc
Oct3/4
Actin
Log2 ladder
Sendai virus
Sox2
Klf4
C-Myc
Oct3/4
Actin



+ control

SFC829-03-02

SFC829-03-04

SFC829-03-06

Product sizes: SeV 181bp; SeV-Sox 451bp; SeV-Klf 410bp; SeV-Myc 532bp; SeV-Oct 483bp; Actin 92bp

Mycoplasma test:

According to MycoAlert Lonza LT07-318

Undetectable at passage 18

Sample	Operator	Passage No.	Reading 1	Reading 2	Ratio / Status
+ve Control			5.944	264.5	44.50
-ve Control			8.135	0.871	0.107
SFC829-03-02			2.208	0.853	0.386

Results mean

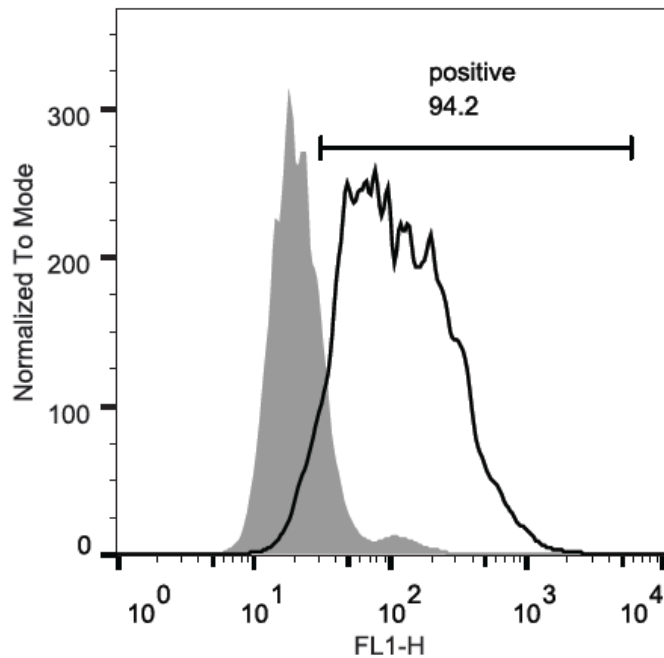
Ratio **0 - 0.999** negative for mycoplasma

Ratio **1 – 1.3** Borderline Result (retest required)

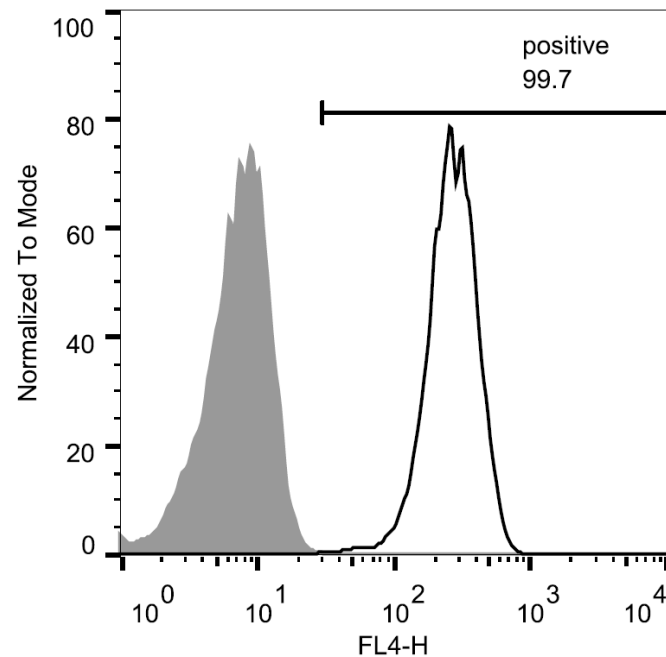
Ratio above **1.3** positive for mycoplasma

Flow cytometric analysis according to WP3 SOP 20 and 21 passage 18

Tra-1-60:



NANOG:



SNP analysis

according to WP3 SOP Preparation of DNA and RNA samples for Illumina arrays

- Passage 18
- Identity to parent fibroblasts confirmed
- Karyotype abnormalities: Acceptable: 1 minor allelic imbalance on Chr6 not detected in fibroblasts
- For details and raw data see StemDB