

Certificate of analysis

SFC166-03-01

Viability post-thaw and Morphology according to SOP19 passage 10

- Cell count immediately post-thaw: 2.5M
- Viability immediately post-thaw: 95%

Photo at 24h post-thaw:

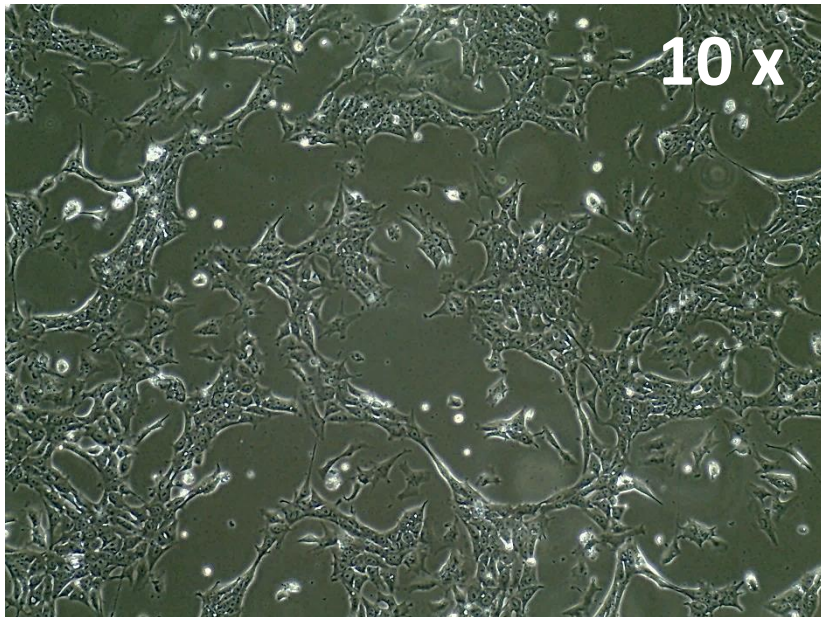
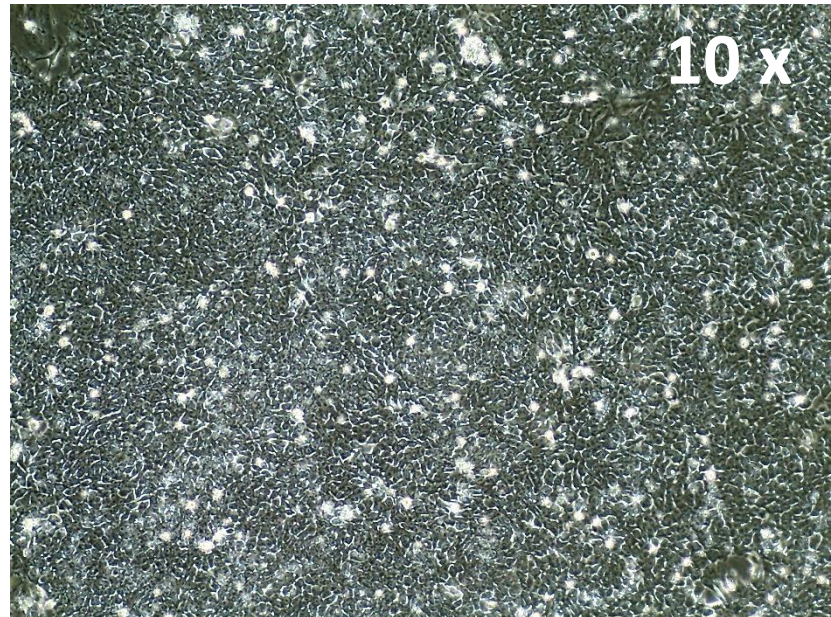


Photo at day 5 post-thaw:



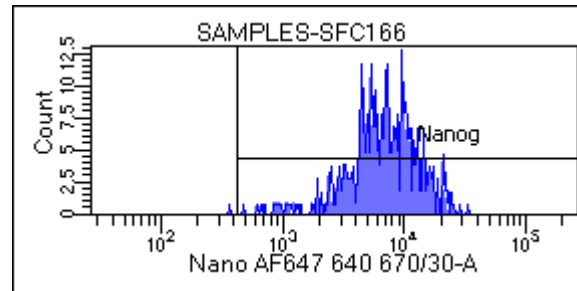
Sendai clearance
according to WP3 SOP15:
undetectable at passage 10

Mycoplasma test
According to MycoAlert Lonza LT07-318:
Undetectable at passage 10

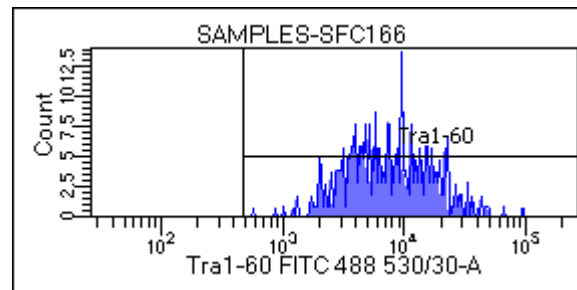
> 1.2	Mycoplasma Contaminated	Positive Control	Negative Control	Date	21/02/2018
0.9-1.2	Status Unknown - Retest within 24 hours	2069	3338	Cell name	SFC166
0-0.9	Mycoplasma Free	73060	602.4	A	1078
		35.3117448	0.180467346	B	444.8
				B/A	0.412615955

Flow cytometric analysis according to WP3 SOP 20 and 21 passage 10

Nanog: 99.7%



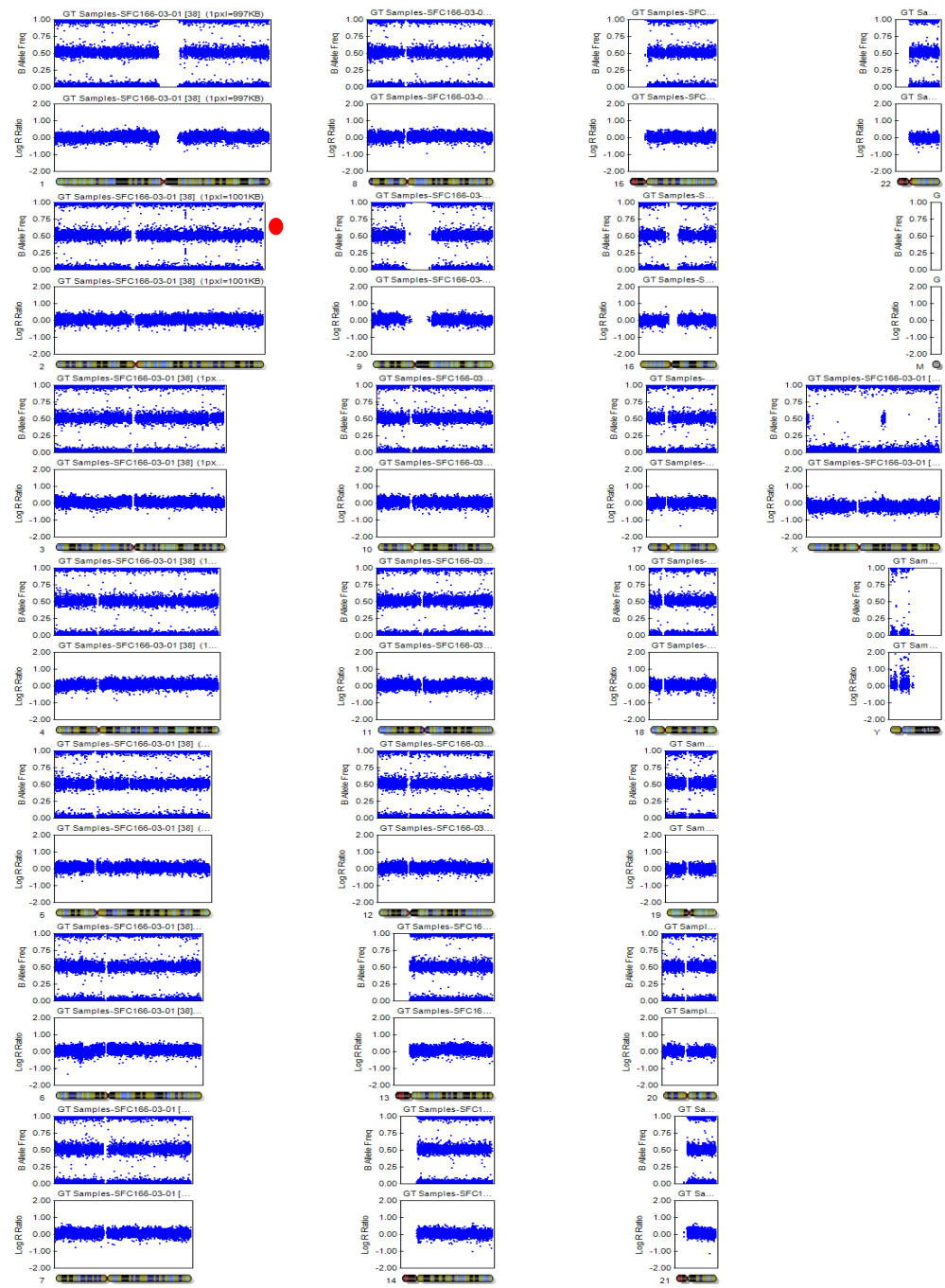
Tra-1-60: 100%



SNP analysis

according to WP3 SOP Preparation of DNA
and RNA samples for Illumina arrays

- Passage 10



Red dot:
Abnormality detected
(insertion)