



## Chromosome Analysis Report: 095030

**Date Reported:** Thursday, December 22, 2022

**Cell Line Sex:** Female

**Cell Line:** 737 APOE4 CRISPR CA12

**Reason for Testing:** Testing for post CRISPR chromosomal abnormalities

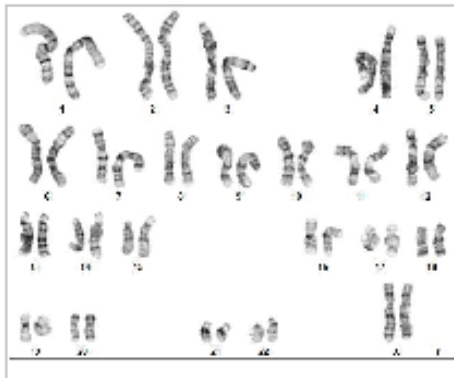
**Submitted Passage #:** None Given

**Date of Sample:** 12/7/2022

**Investigator:** Oded Oron, University of Miami

**Specimen:** Human iPSC

**Results:** 46,XX



**Cell:** 24

**Slide:** G02

**Slide Type:** Karyotype

**Total Counted:** 20

**Total Analyzed:** 8

**Total Karyogrammed:** 4

**Band Resolution:** 425 - 450

### Interpretation:

**This is a normal karyotype; no clonal abnormalities were detected at the stated band level of resolution.**

**Completed by:** Jennifer Pecos, CG(ASCP)

**Reviewed and Interpreted by:** Xiangqiang Shao, PhD

For Internal use only

**Date:** \_\_\_\_\_ **Sent By:** \_\_\_\_\_ **Sent To:** \_\_\_\_\_ **QC Review By:** \_\_\_\_\_

**Limitations:** This assay allows for microscopic visualization of numerical and structural chromosome abnormalities. The size of structural abnormality that can be detected is >3-10Mb, dependent upon the G-band resolution obtained from this specimen. For the purposes of this report, band level is defined as the number of G-bands per haploid genome. It is documented here as "band level", i.e., the range of bands determined from the four karyograms in this assay. Detection of heterogeneity of clonal cell populations in this specimen (i.e., mosaicism) is limited by the number of metaphase cells examined, documented here as "% of cells counted".

This assay was conducted solely for listed investigator/institution. The results of this assay are for research use only. Unless otherwise mutually agreed in writing, the services provided to you hereunder by WCell Research Institute, Inc. ("WCell") are governed solely by WCell's Terms and Conditions of Service, found at [www.wcell.org/privacyandterms](http://www.wcell.org/privacyandterms). Any terms you may attach to a purchase order or other document that are inconsistent, add to, or conflict with WCell's Terms and Conditions of Service are null and void and of no legal force or effect.