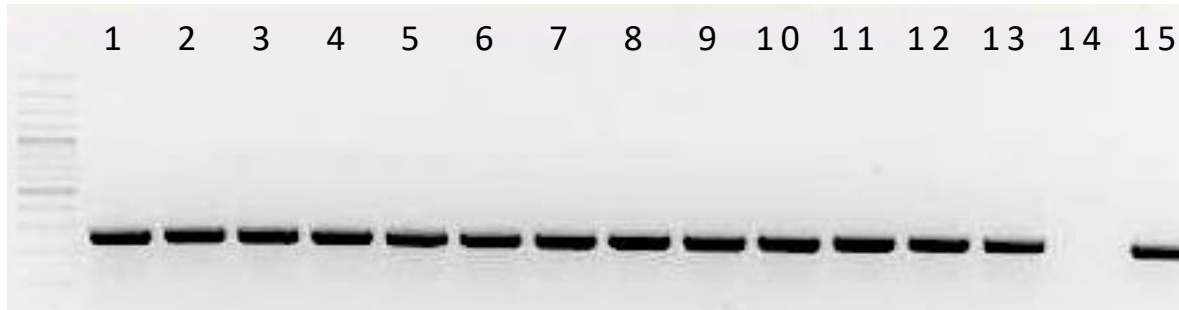
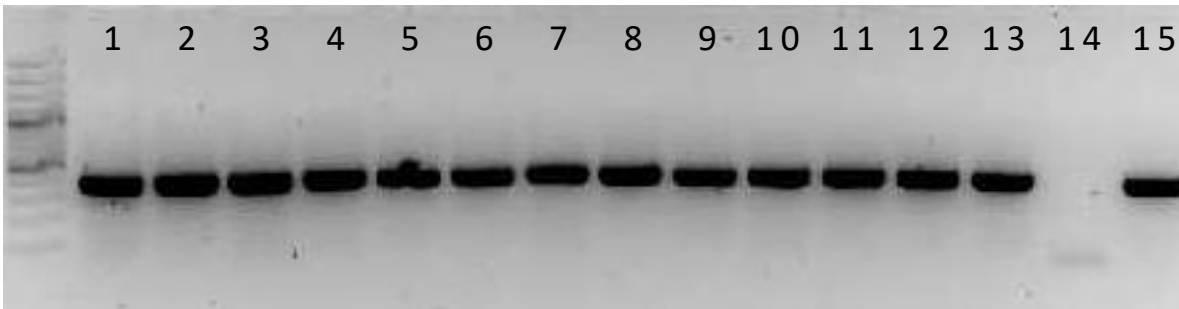


**M16091**  
**Integration PCR**  
22/06/16

Oct4 – Sox2



Klf4 - cMyc



1. SWB FiPS 159 R4F#2, P8
2. SWB FiPS 159 R4F#3, P8
3. SWB FiPS 344 R4F#1, P9
4. SWB FiPS 344 R4F#2, P9
5. DUPSW FiPS 301 R4F#1, P8
6. DUPSW FiPS 301 R4F#2, P10
7. DUPSW FiPS 301 R4F#3, P8
8. DUPSW FiPS 501 R4F#2, P10
9. DUPSW FiPS 501 R4F#3, P7
10. DUPSW FiPS 501 R4F#5, P9
11. DUPSW FiPS 701 R4F#1, P11
12. DUPSW FiPS 701 R4F#2, P11
13. UCiPS Ctrl5 R4F#25, P8
14. Negative Control (H2O)
15. Positive Control

# M16091

## Silencing qPCR

28/06/16

