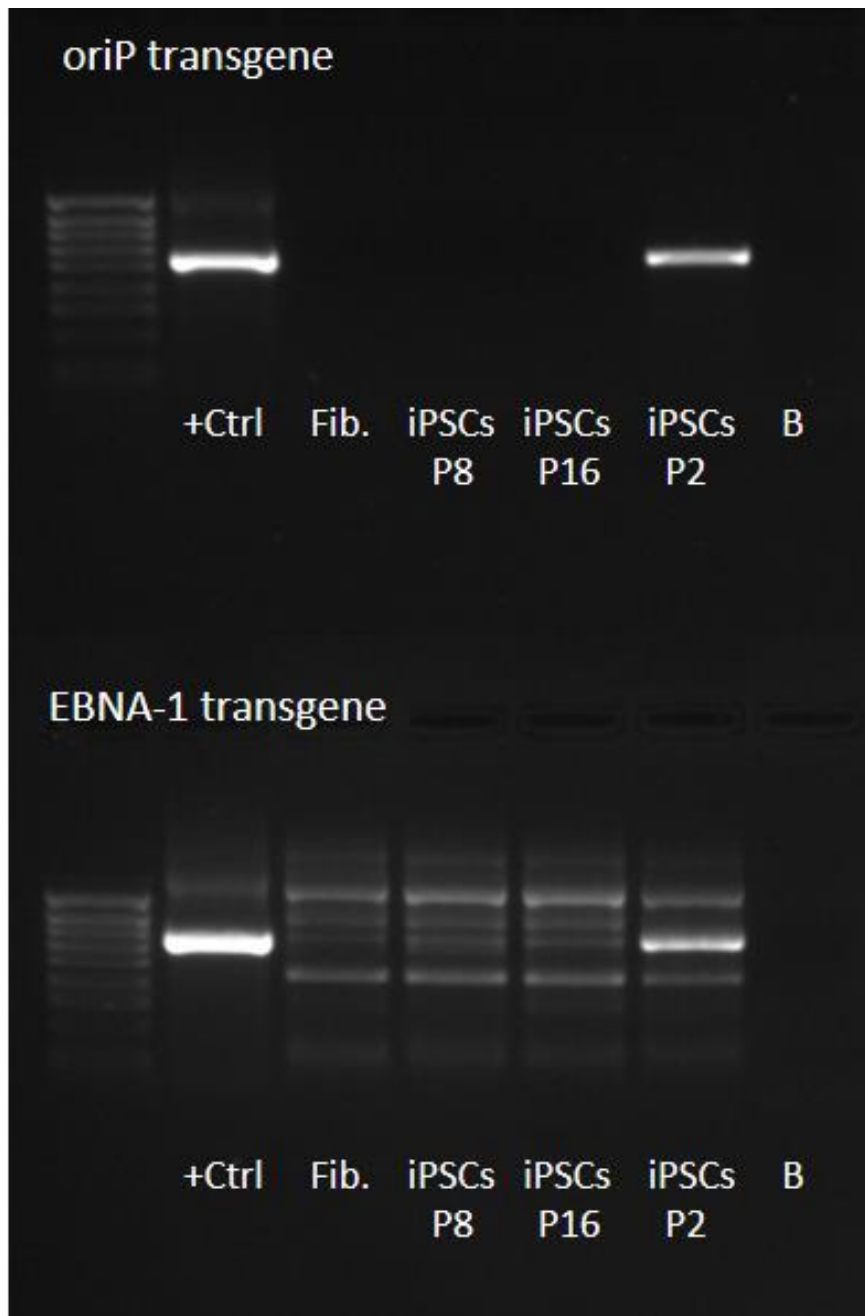


Detection of reprogramming vectors



PCR result of the transgenes *oriP* and *EBNA-1* amplification, to detect the presence of the Epi5™ Episomal Vectors used in reprogrammed iPSC colonies. +Ctrl – the DNA used as PCR template was the vector; Fib. – DNA from the MLI fibroblastos before reprogramming; iPSCs P8, P16 and P2 – DNA from MLI iPSCs from passages 8, 16 and 2 respectively; B – PCR without DNA template. The reprogramming vectors can be detected in MLI iPSCs at P2, but were absent after P8.