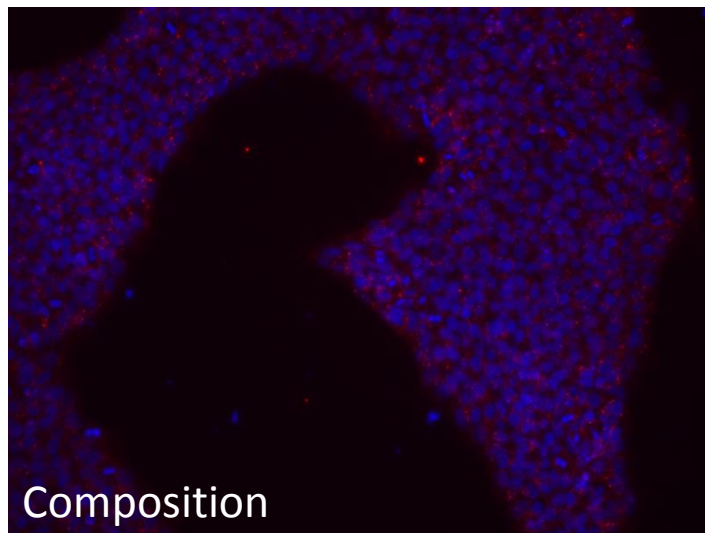
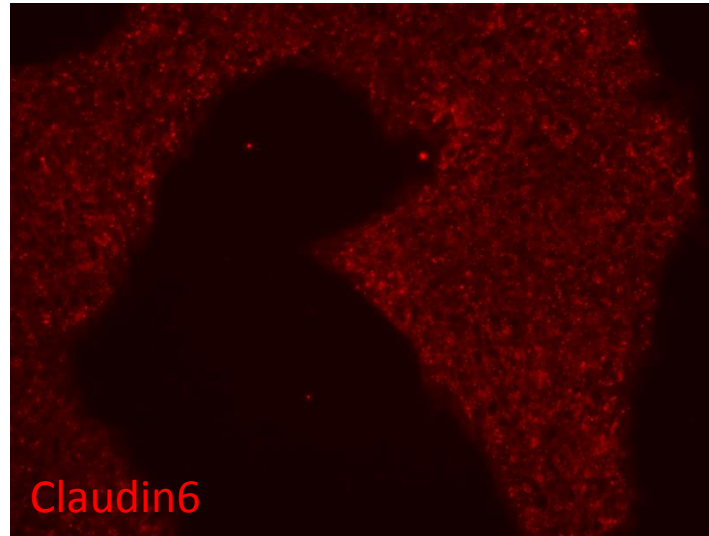
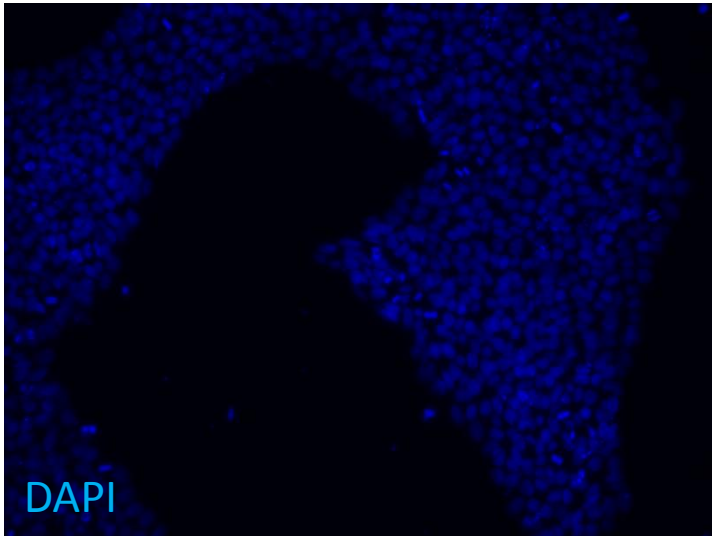


# ULEIi001-A Claudin 6

Claudin6 R&D Systems MAB3656 mouse monoclonal IGG 2B

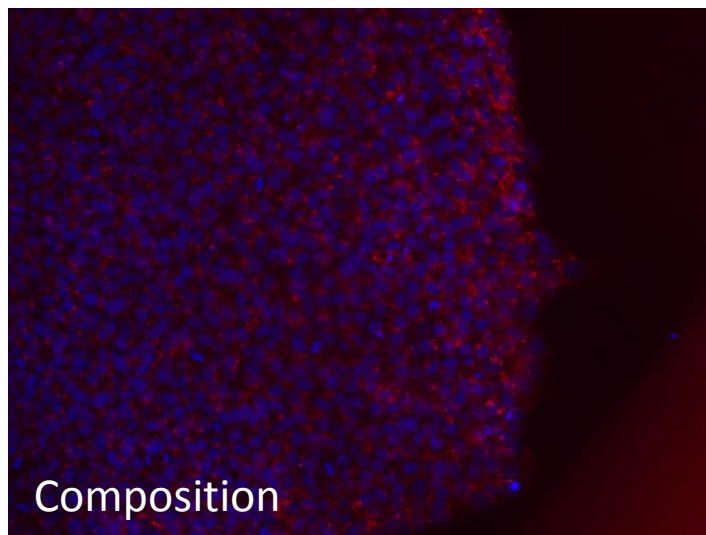
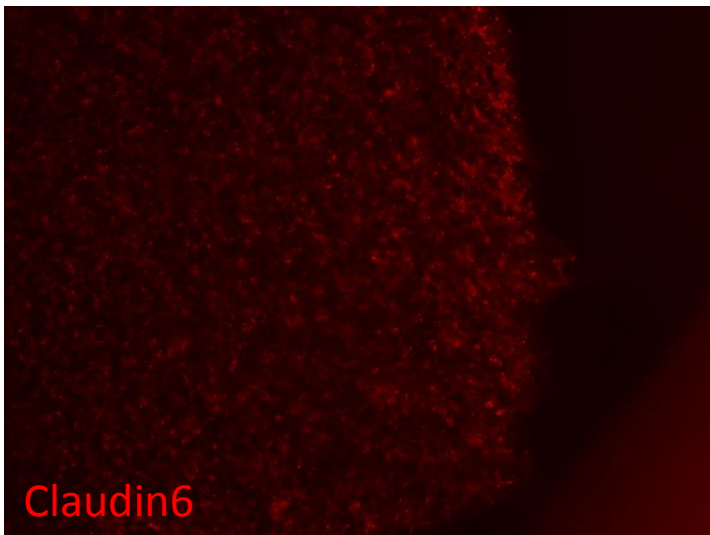
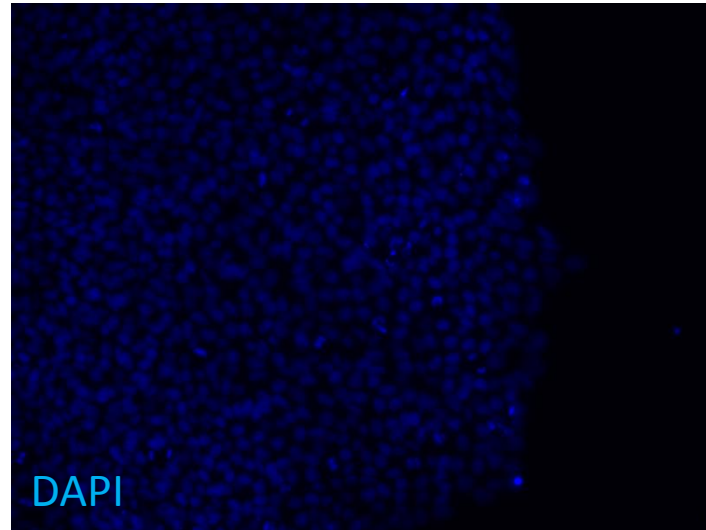
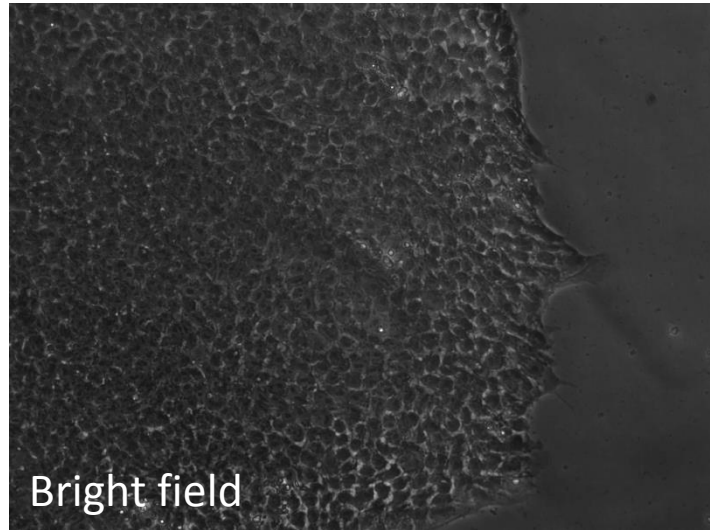
Secondary antibody Thermo Scientific goat anti-mouse AF 633



# ULEI001-A Claudin6

Claudin6 R&D Systems MAB3656 mouse monoclonal IGG 2B

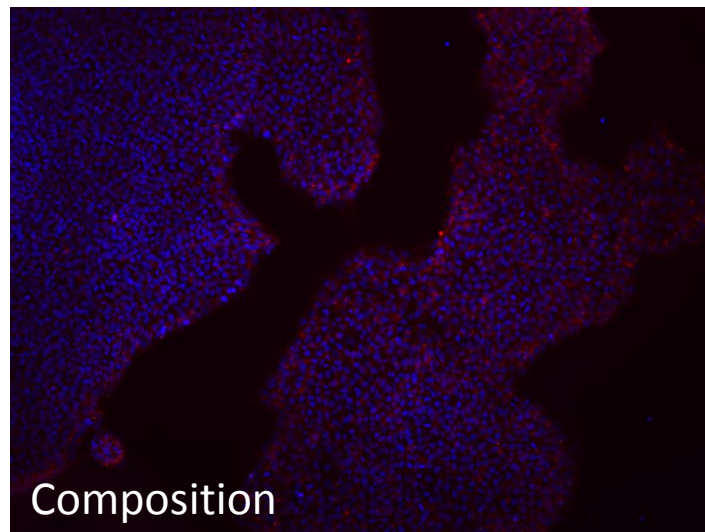
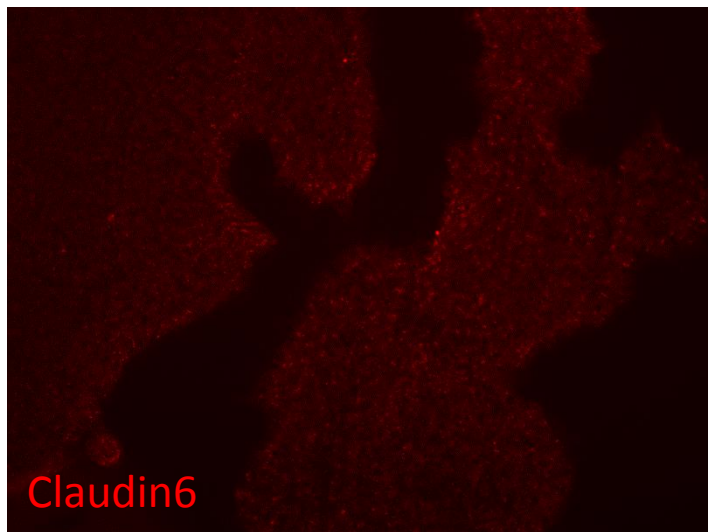
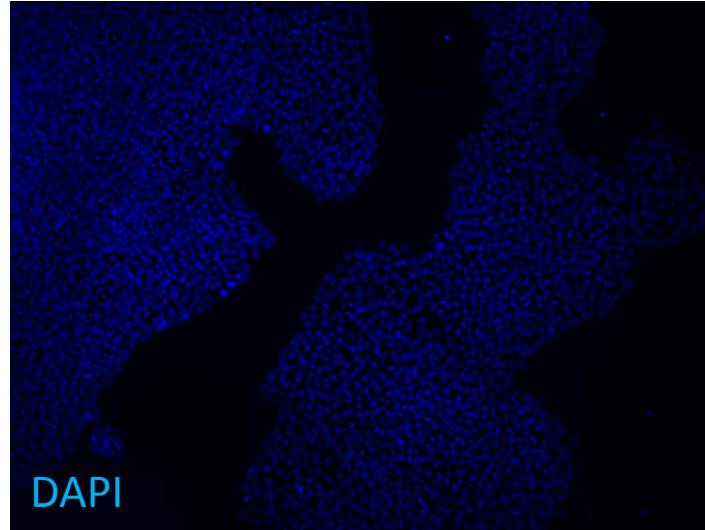
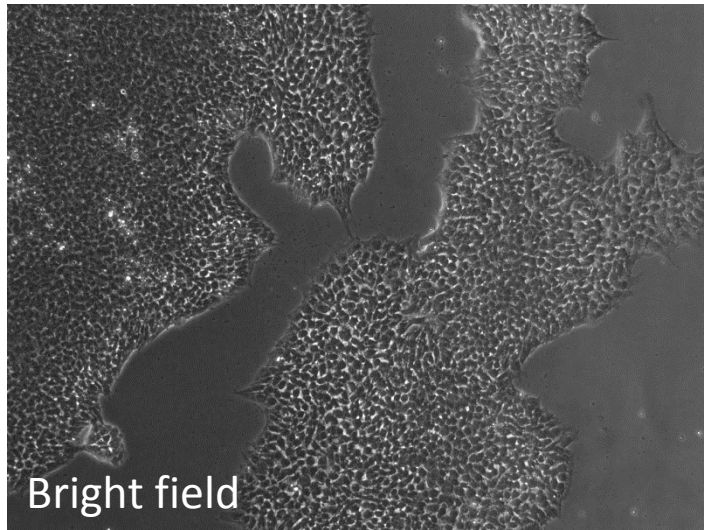
Secondary antibody Thermo Scientific goat anti-mouse AF 633



# ULEI001-A Claudin6

Claudin6 R&D Systems MAB3656 mouse monoclonal IGG 2B

Secondary antibody Thermo Scientific goat anti-mouse AF 633



# Staining procedure

- Negative control – human skin fibroblasts
- Positive control – commercial iPS cell line Gibco Episomal hiPSC line (**A18945 Life Technologies**)
- Fixation 4% of paraformaldehyde
- Permeabilization 0,01% saponin
- Blocking 0,1% BSA
- Primary antibody incubation overnight (dilution 1:400), secondary antibody incubation 1h (dilution 1:1000)

Immunochemical stains were performed by MS Aniela Skrzypczyk