

Certificate of analysis

SFC170-03-02

Signature: Katja Gassner Date: 10.08.2015

Supervisor signature: Linda Lako

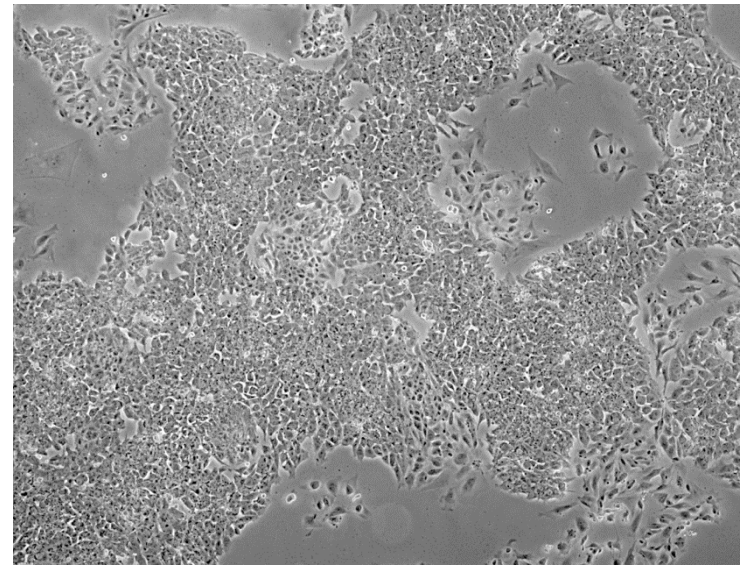
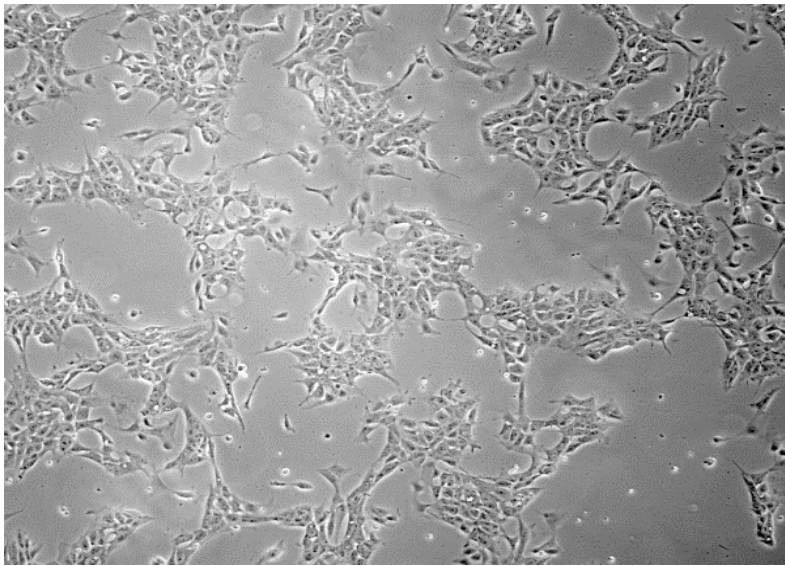
Date: 10.08.2015

Source of fibroblasts and reprogramming information

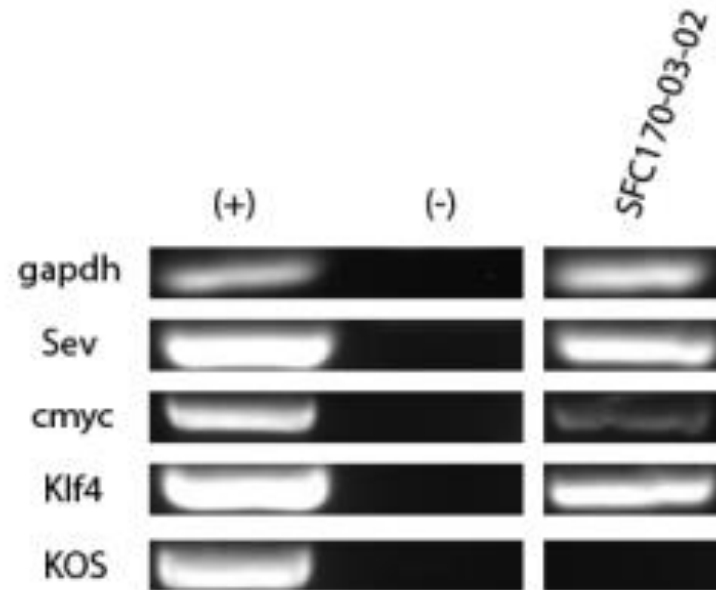
- SF170 from UOXF
- Reprogrammed at UNEW
- Reprogrammed on 16/01/2015 at passage 7
- Cytotune 2

Viability post-thaw and Morphology according to SOP19 passage 20

- Cell count immediately post-thaw 1.8×10^6
- Viability immediately post-thaw 90%
- Photo at 24h and 4 days post-thaw:



Sendai clearance:
according to WP3 SOP15
undetectable at passage 20



Comment: Cell line was frozen at passage 20, after thawing and 1:4/6 passaging for 3 more passages cells are still SEV-positive

Mycoplasma test:

According to MycoAlert Lonza LT07-318

Undetectable at passage 20

Owner	KG					
Date	12/05/2015					
Cell name	sfc170-03-02					
A	0.0271					
B	0.0129					
B/A	0.47601476					
> 1.2		Mycoplasma Contaminated			Positive Control	Negative Control
0.9-1.2		Status Unknown - Restest within 24 hours			0.0404	0.0906
0-0.9		Mycoplasma Free			2.339	0.0118
					57.8960396	0.130242826

Flow cytometric analysis
according to WP3 SOP 20 and 21
passage 20

Comment: No flow data since still SEV-positive

SNP analysis

according to WP3 SOP Preparation of DNA and RNA samples for Illumina arrays

- Passage 20
- Identity to parent fibroblasts confirmed
- Karyotype abnormalities: Major Chr17 abnormality
- For details and raw data see StemDB