



# Certificate of analysis

SFC029-03-04

Operator: Jane Vowles

Date: 23/03/2015

Supervisor: Sally Cowley

Date: 04.09.2015

Signature:

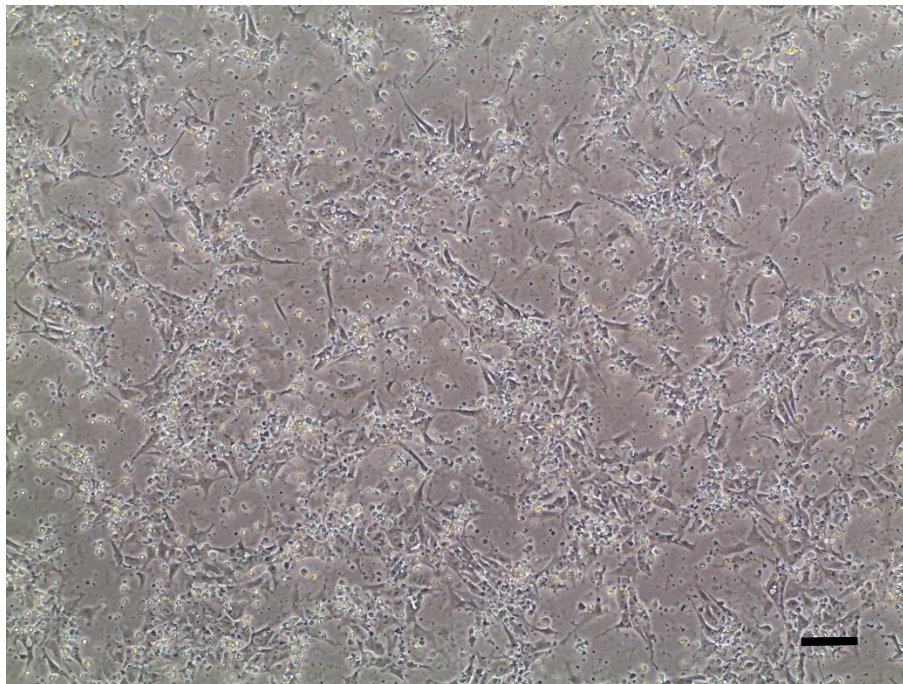
*SACowley*

# Source of fibroblasts and reprogramming information

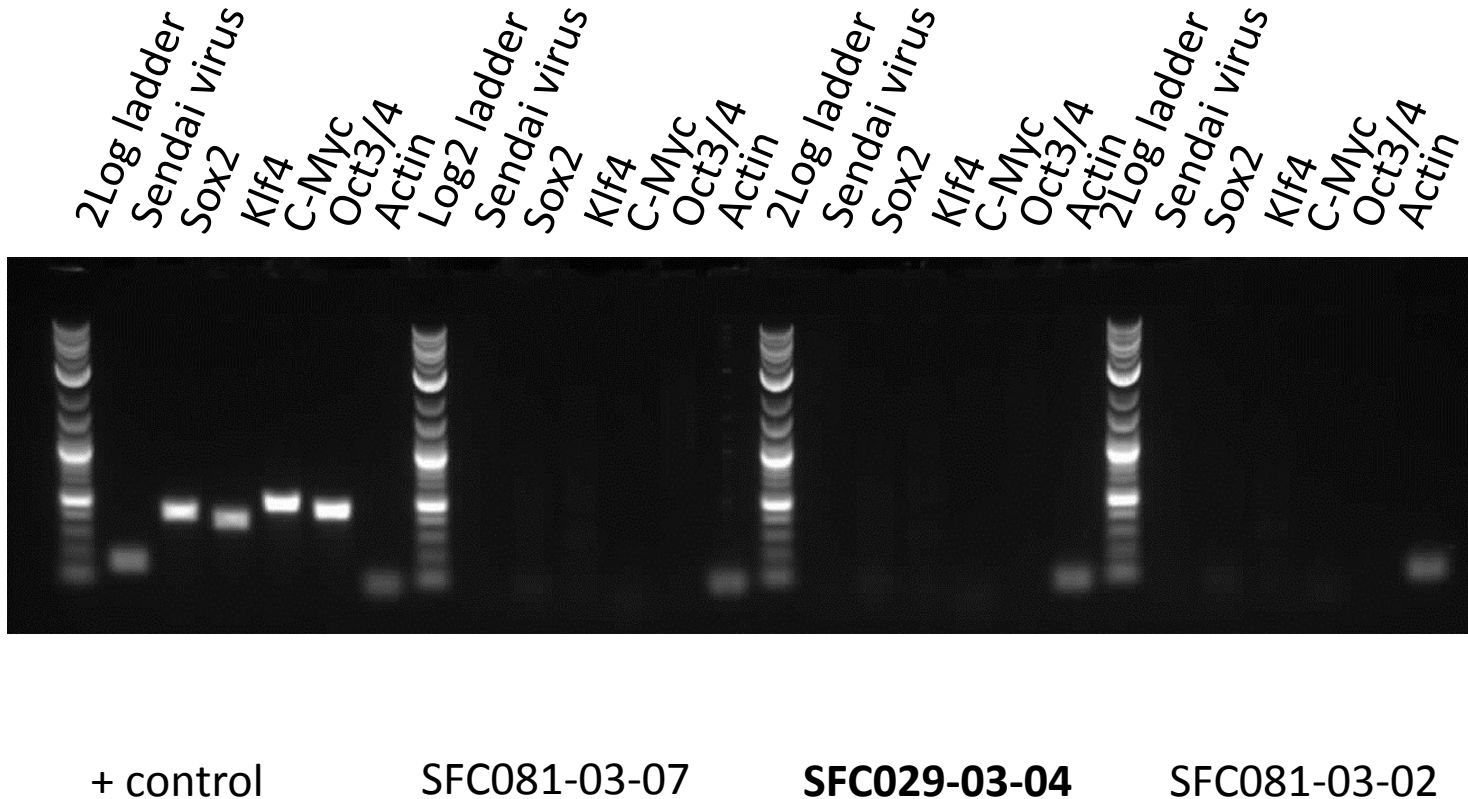
- SF029 from Luebeck
- Reprogrammed at UOXF JMSCF
- Reprogrammed on 05/06/2014 at passage 3
- Cytotune v1 WP3 SOP10

# Viability post-thaw and Morphology according to SOP19 passage 19

- Cell count immediately post-thaw  $1.7 \times 10^6$
- Viability immediately post-thaw **77%**
- Photo at 24h post-thaw (scale bar =  $100\mu\text{m}$ ):



# Sendai clearance: according to WP3 SOP15 undetectable at passage 19



Product sizes: SeV 181bp; SeV-Sox 451bp; SeV-Klf 410bp; SeV-Myc 532bp; SeV-Oct 483bp; Actin 92bp

# Mycoplasma Test:

## According to MycoAlert Lonza LT07-318 undetectable at passage 20

Sample	Clone	Passage number	Initial	Reading 1	Reading 2	Ratio/Status
+ve control				4.108	93.41	22.74
-ve control				7.152	1.031	0.14
6	SFC029-03-04	p20	JV	3.72	1.52	0.41

Results mean

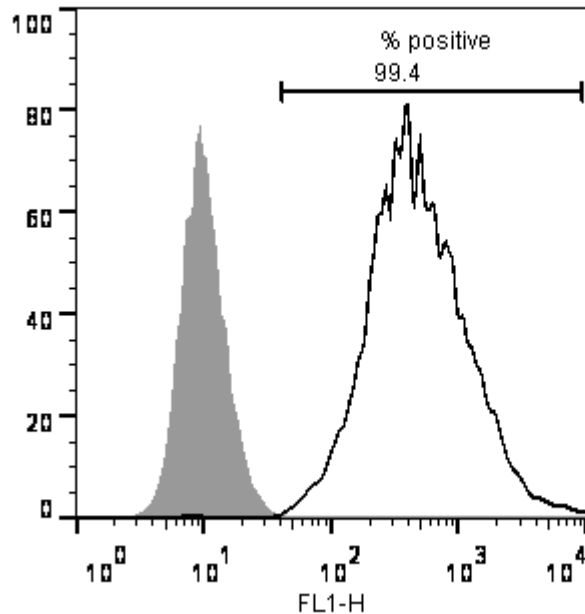
Ratio **0 - 0.999** negative for mycoplasma

Ratio **1 – 1.3** Borderline Result (retest required)

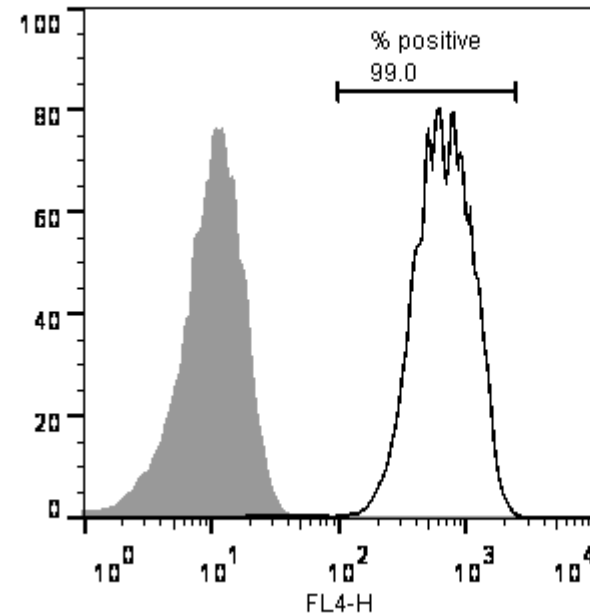
Ratio above **1.3** positive for mycoplasma

# Flow cytometric analysis according to WP3 SOP 20 and 21 passage p22

Tra-1-60:



NANOG:



# SNP analysis

according to WP3 SOP Preparation of DNA and RNA samples for Illumina arrays

- Passage 19
- Identity to parent fibroblasts confirmed
- Karyotype abnormalities: none detected
- For details and raw data see StemDB