



Certificate of analysis

SFC840-03-06

Operator: Cathy Browne Date: 08/01/2015

Supervisor: Sally Cowley Date: 22/04/2015

Signature:

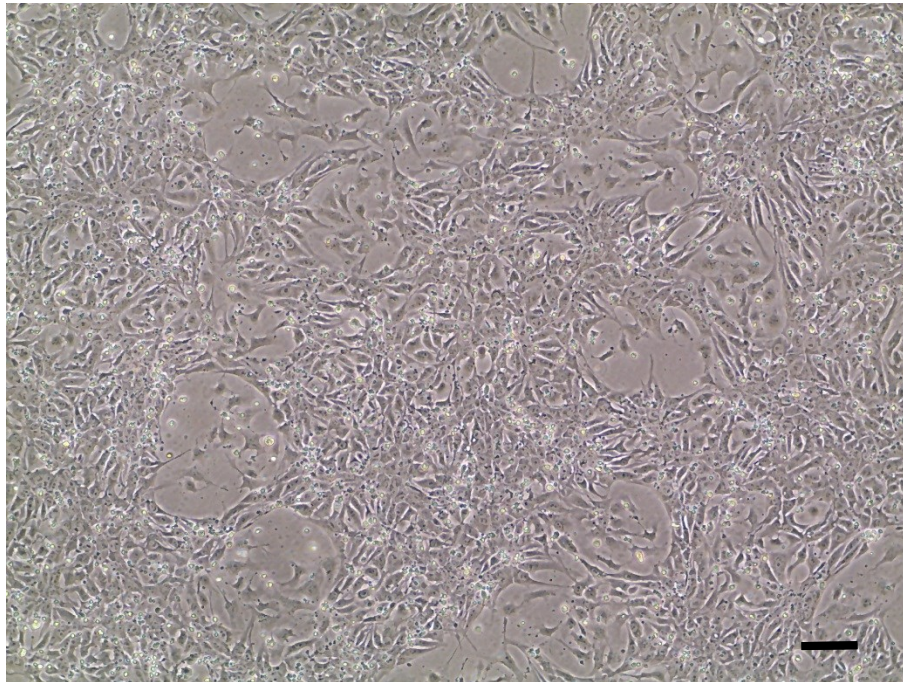
SACowley

Source of fibroblasts and reprogramming information

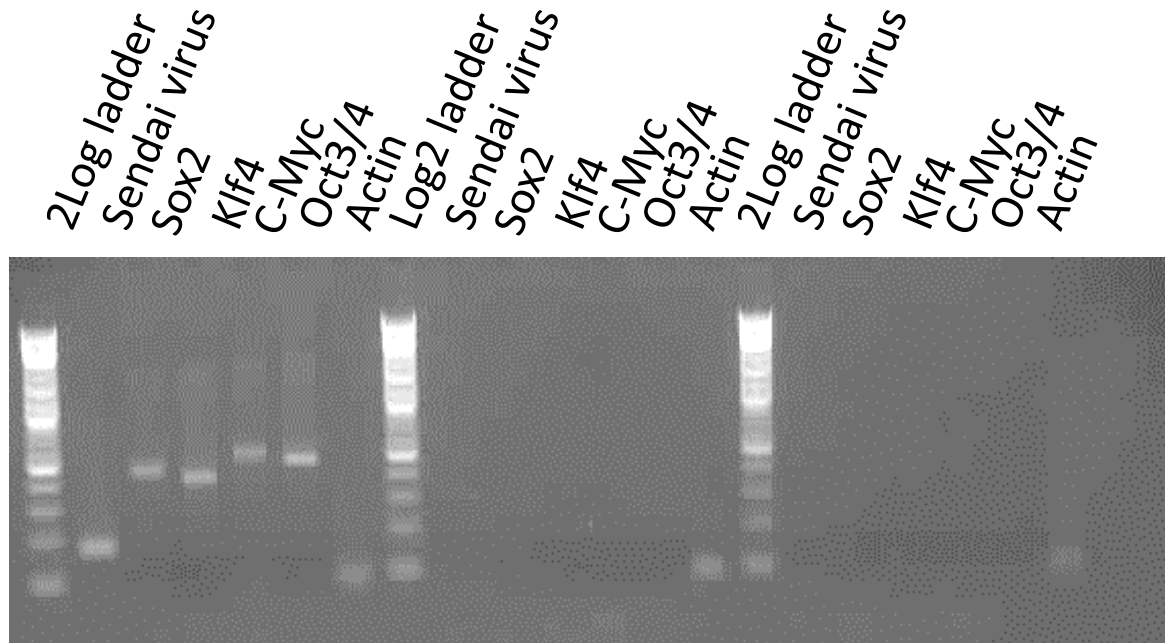
- SF840 from UOXF 04/04/2011
- Reprogrammed at UOXF JMSCF
- Reprogrammed on 13/12/2012 at passage 5
- Cytotune v1 WP3 SOP10

Viability post-thaw and Morphology according to SOP19 passage 17

- Cell count immediately post-thaw 3.22×10^6
- Viability immediately post-thaw 76.15%
- Photo at 24h post-thaw (scale bar = $100\mu\text{m}$): some differentiation evident



Sendai clearance: according to WP3 SOP15 undetectable at passage 17



+ control

SFC840-03-05

SFC840-03-06

Product sizes: SeV 181bp; SeV-Sox 451bp; SeV-Klf 410bp; SeV-Myc 532bp; SeV-Oct 483bp; Actin 92bp

Mycoplasma test: according to MycoAlert Lonza LT07-318 undetectable at passage 17

Sample	Passage	Initials	Reading 1	Reading 2	Ratio / Status
+ve Control			5.053	172	34.04
-ve Control			6.852	0.758	0.111
1. SFC 840-03-06	p17	CB	1.930	0.833	0.431

Results mean

Ratio **0 - 0.999** negative for mycoplasma

Ratio **1 – 1.3** Borderline Result (retest required)

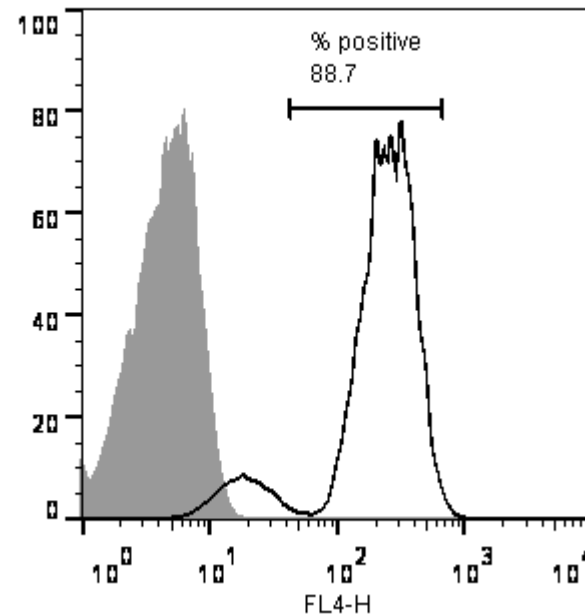
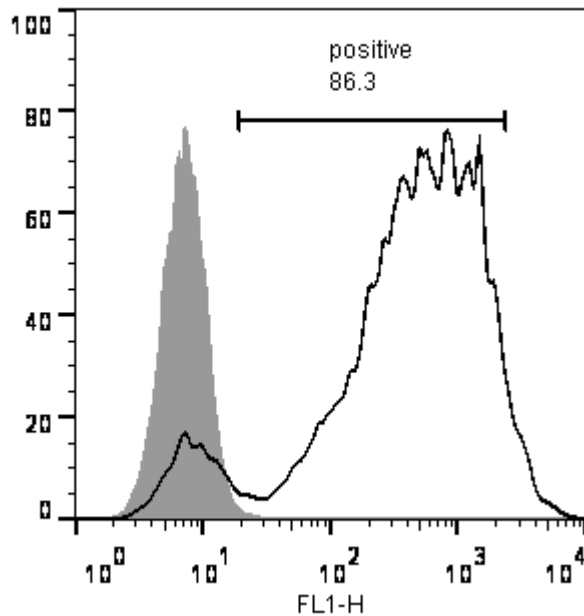
Ratio above **1.3** positive for mycoplasma

Flow cytometric analysis according to WP3 SOP 20 and 21 passage p17

NB some differentiation evident – advise careful
cleanup of this line for initial few passages

Tra-1-60:

NANOG:



SNP analysis

according to WP3 SOP Preparation of DNA
and RNA samples for Illumina arrays

- Passage 17
- Identity to parent fibroblasts confirmed
- Karyotype abnormalities: none
- For details and raw data see StemDB