



# Certificate of analysis

iPS MK144-7

Operator: Jane Vowles

Date: 06/01/2016

Supervisor: Sally Cowley

Date: 01/09/2016

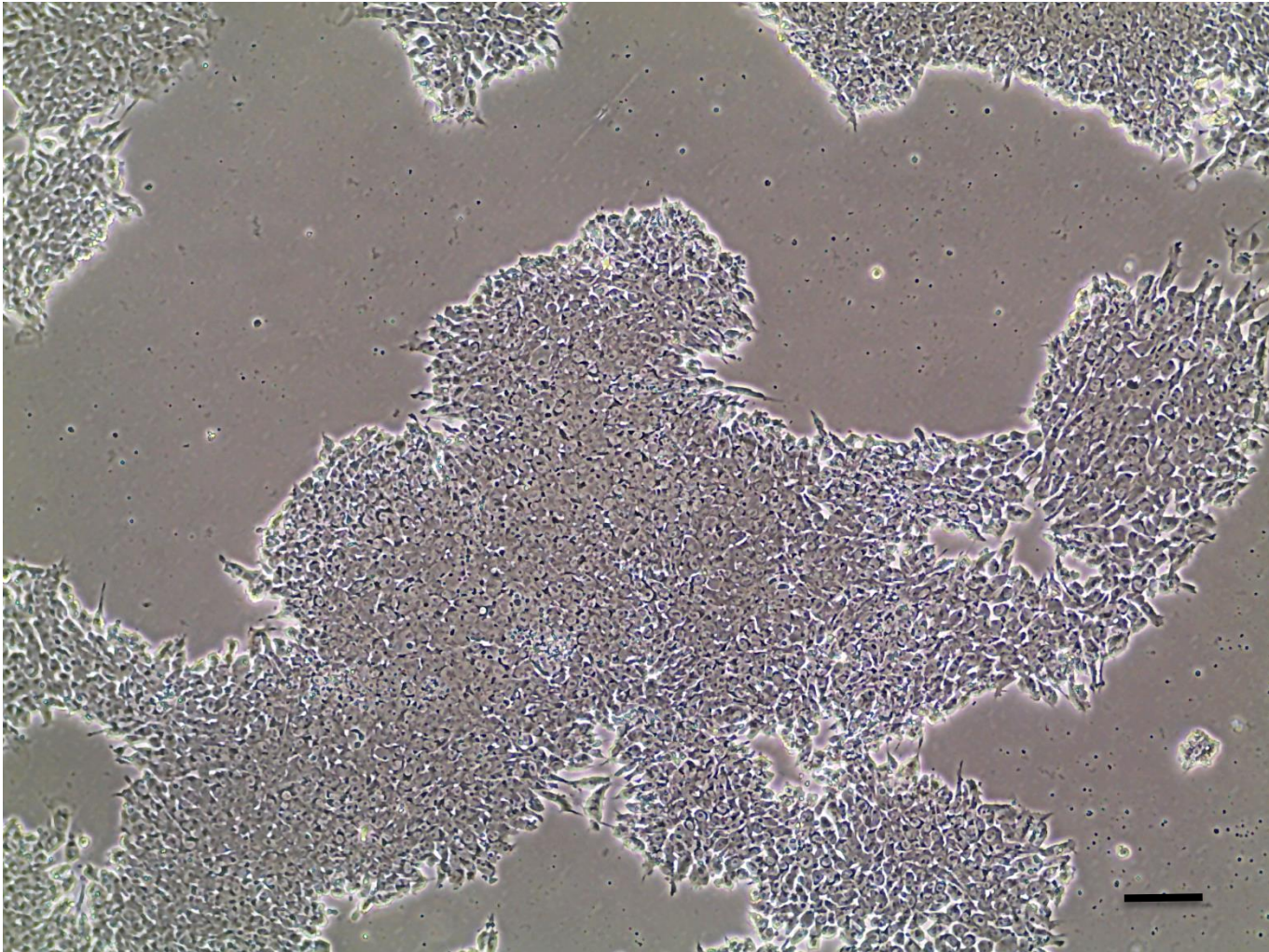
Signature: *SACowley*

# Source of fibroblasts and reprogramming information

- HDF MK144 from OPDC
- Received 02/08/2012
- Female, aged 57, Lrrk2 G2019S
- Reprogrammed at UOXF JMSCF
- Reprogrammed on 06/09/12 at passage 3
- Yamanaka retrovirus

# Photo p23

(scale bar = 100 $\mu$ m)



# Mycoplasma Test:

According to R & D MycoProbe CUL001B undetectable in HDF prior to reprogramming

Book number \_\_\_\_\_ Project number \_\_\_\_\_ Date: Wed 19/9/12 cont 147

Project / experiment title \_\_\_\_\_

References \_\_\_\_\_ Continued from page \_\_\_\_\_

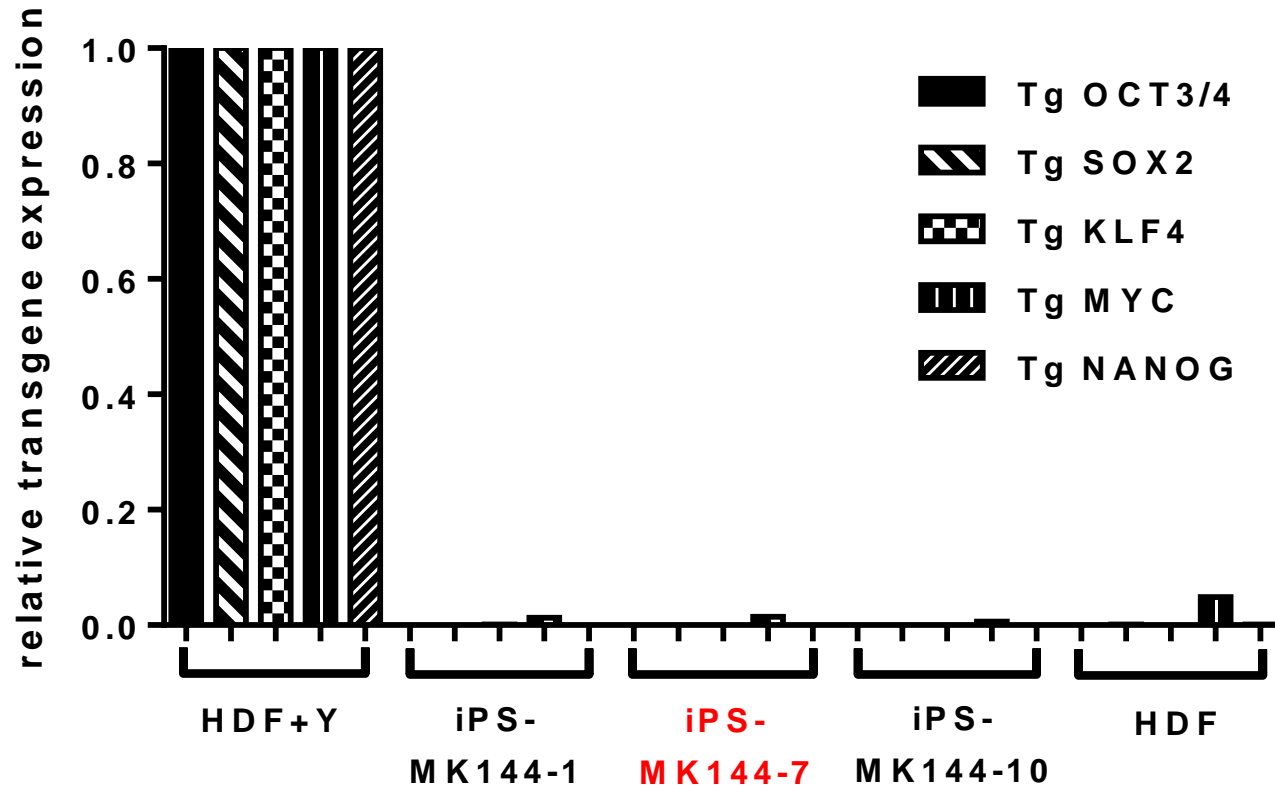
Samples sent to Philip Cobden for mycoplasma testing

Sample number	NHDF		Ratio
1	JL	p4	✓ 0.448
2	DD	p4	✓ 0.408
3	SH	p4	✓ 0.520
4	MK144	p5	✓ 0.416
5	JR011	p3	✓ 0.427
6	JR051	p1	✓ 0.485
7	JR061	p4	✓ 0.455
8	JR236	p3	✓ 0.334
9	JR066	p1	✓ 0.551
10	RH058	p1	✓ 0.579
11	NH031	p1	✓ 0.501
12	TURKE2	p12	✓ 0.491
13	7245	p11	✓ 0.553

Ratio 0 - 0.999 negative  
1 - 1.3 borderline  
1.3+ positive

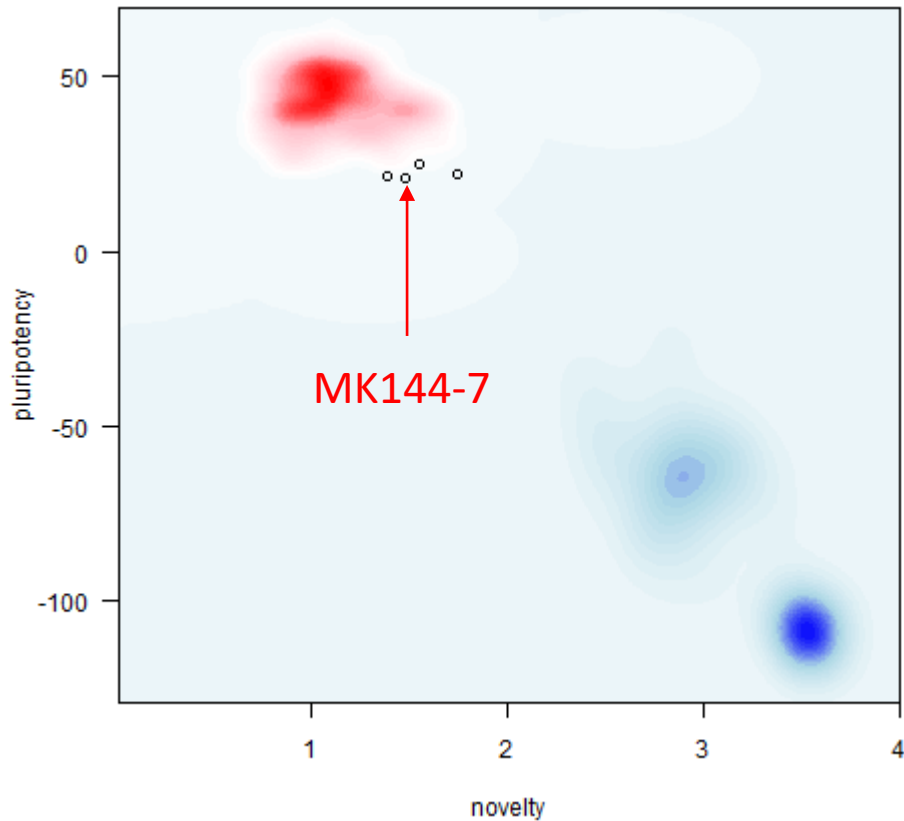
Positive control 2684  
-ve " 0.121

# Silencing of transgenes p21



(normalised to NHDF transduced with Yamanaka reprogramming retroviruses/Nakanishi SeV 5d before harvest, 'NHDF+Y', relative to actin)

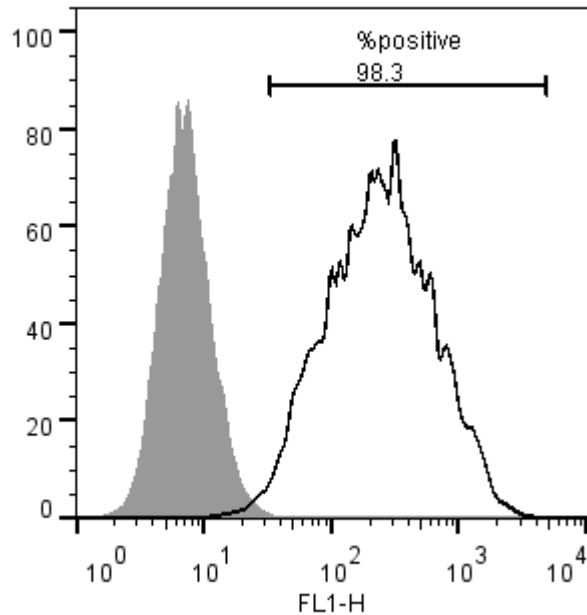
# PluriTest analysis of Illumina HT12v4 transcriptome array p21



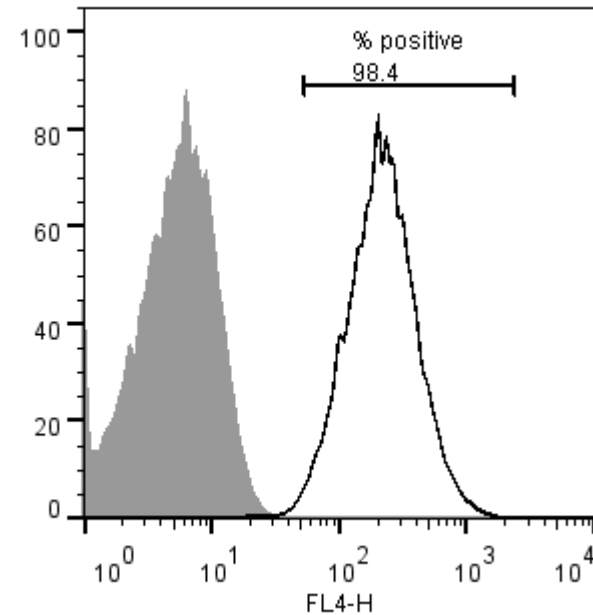
	pluri-raw	pluri logit-p	novelty	novelty logit-p	RMSD
iPS.MK002.4	21.44	1	1.4	0.01	0.44
iPS.MK002.6	25.36	1	1.55	0.04	0.45
<b>iPS.MK144.7</b>	<b>21.05</b>	<b>1</b>	<b>1.48</b>	<b>0.02</b>	<b>0.44</b>
iPS.OX2.28	22.22	1	1.75	0.24	0.44

# Flow cytometric analysis of pluripotency markers passage p32

Tra-1-60:



NANOG:



# SNP analysis

## Illumina Human CytoSNP-12v2.1 beadchip array

- Passage p14
- Identity to parent fibroblasts confirmed
- Karyotype abnormalities: none detected



