



Certificate of analysis

SFC830-04-08

Operator: Jane Vowles

Date: 11/12/15

Supervisor: Sally Cowley

Date: 16/08/2016

Signature:

SACowley

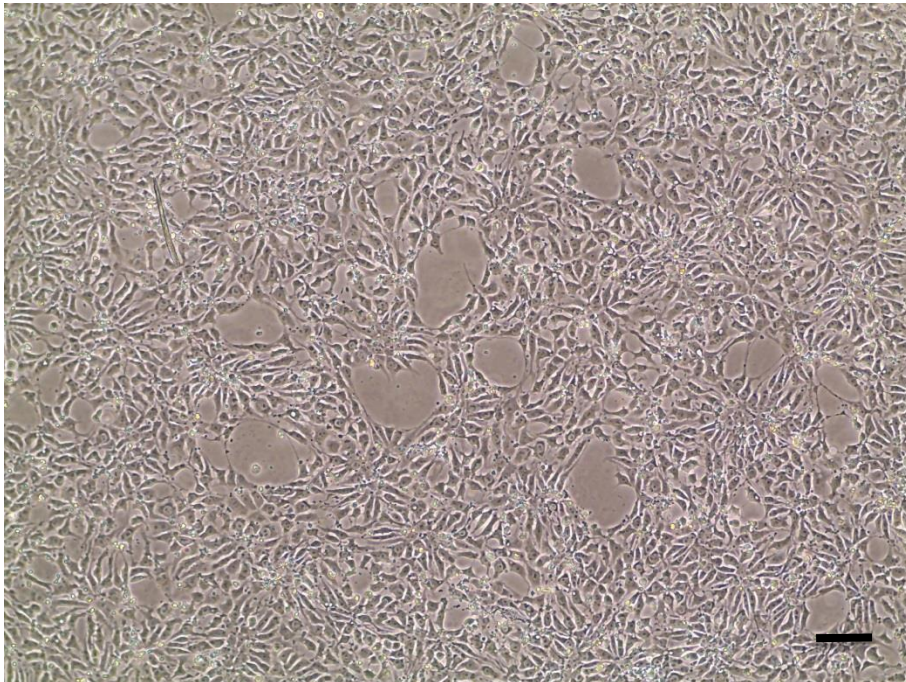
Source of fibroblasts and reprogramming information

- SF830 from UCL
- Reprogrammed at UOXF-S
- Reprogrammed on 20/01/2015 at passage p5
- Cytotune v2 WP3 SOP10

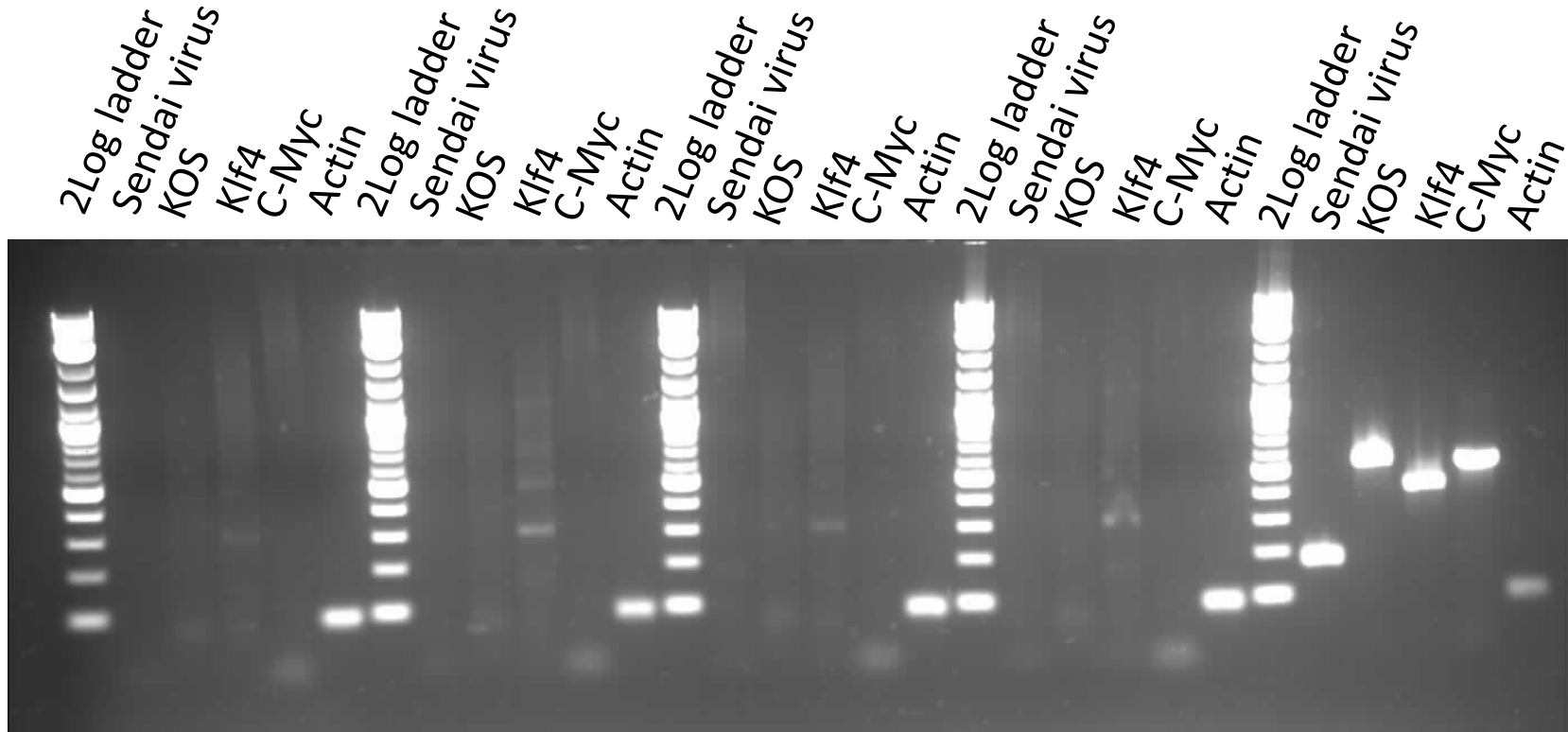
Viability post-thaw and Morphology according to SOP19 passage p15

- Cell count immediately post-thaw 4.16×10^6
- Viability immediately post-thaw 90%
- Photo post-thaw (scale bar = 100 μ m):

24h post-thaw 80% plated



Sendai clearance: according to WP3 SOP15 undetectable at passage 15



SFC845-03-05

SFC845-03-09

SFC845-03-11

SFC830-04-08

+ control

Non-specific band is visible in Klf lane

Product sizes: SeV 181bp; KOS 528bp; SeV-Klf 410bp; SeV-Myc 532bp; Actin 92bp

Mycoplasma Test:

According to MycoAlert Lonza LT07-318 undetectable at passage p15

Sample	Clone	Passage number	Initial	Reading 1	Reading 2	Ratio/Status
+ve control				9.834	131.2	13.34
-ve control				9.064	0.89	0.10
9	SFC830-04-08	p15	WH	1.56	1.01	0.65

Results mean

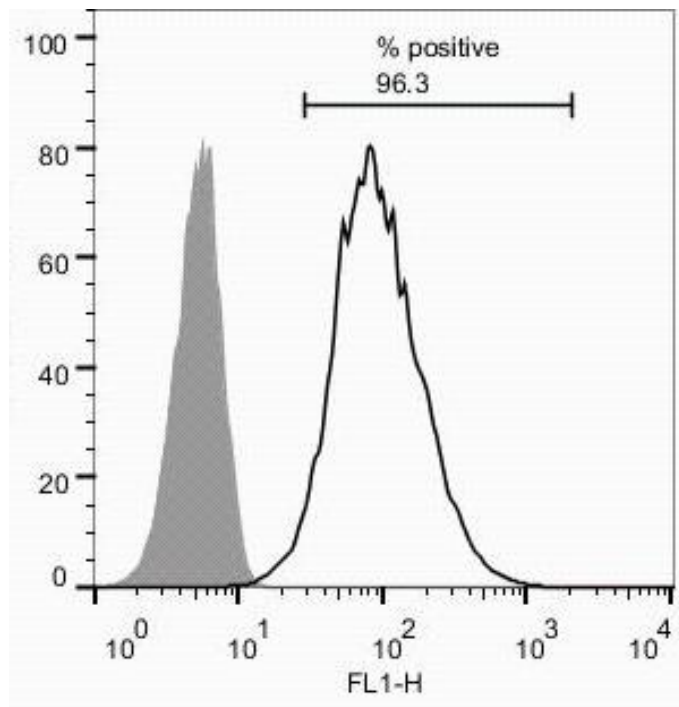
Ratio **0 - 0.999** negative for mycoplasma

Ratio **1 – 1.3** Borderline Result (retest required)

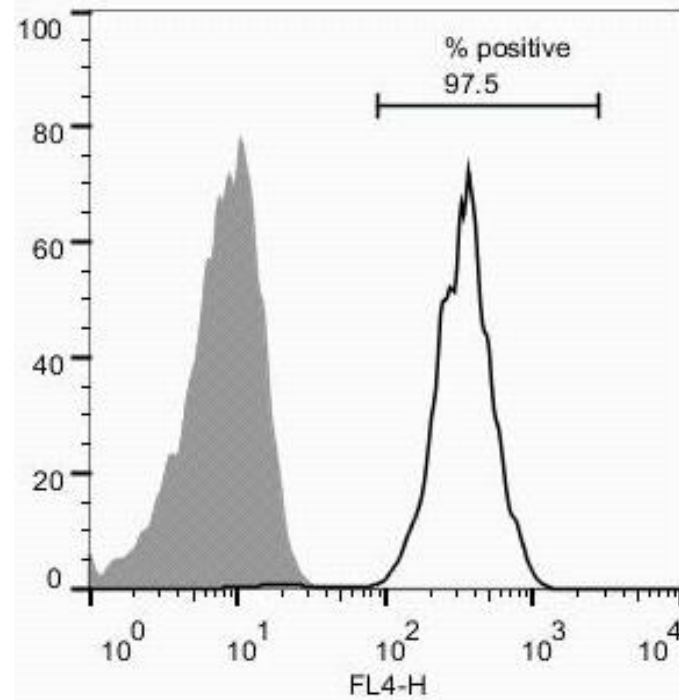
Ratio above **1.3** positive for mycoplasma

Flow cytometric analysis according to WP3 SOP 20 and 21 passage p20

Tra-1-60:



NANOG:



SNP analysis

according to WP3 SOP Preparation of DNA and RNA samples for Illumina arrays

- Passage 15
- Identity to parent fibroblasts confirmed
- Karyotype abnormalities: none detected
- For details and raw data see StemDB