

Certificate of analysis

SFC021-03-02

Signature: Katja Gassner Date: 06.10.2014

Supervisor signature: Lyle Armstrong

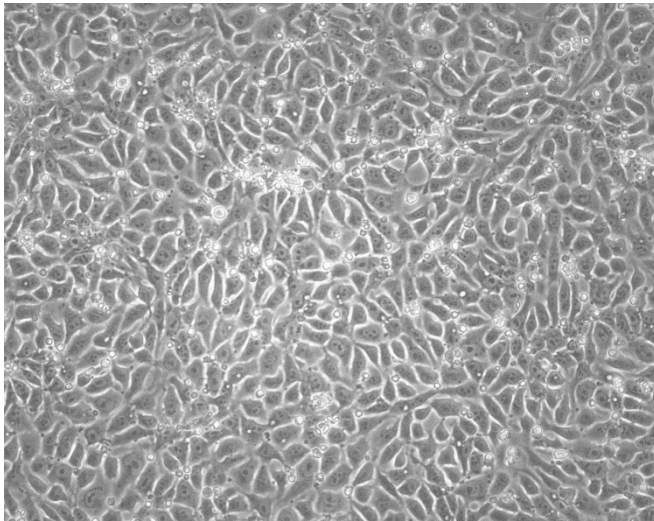
Date: 06.10.2014

Source of fibroblasts and reprogramming information

- SF021 from Glostrup
- Reprogrammed at UNEW
- Reprogrammed on 26/01/2014 at passage 8
- Cytotune 2

Viability post-thaw and Morphology according to SOP19 passage 16

- Cell count immediately post-thaw 1.9×10^6
- Viability immediately post-thaw 84%
- Photo at 24h and 5 days post-thaw:

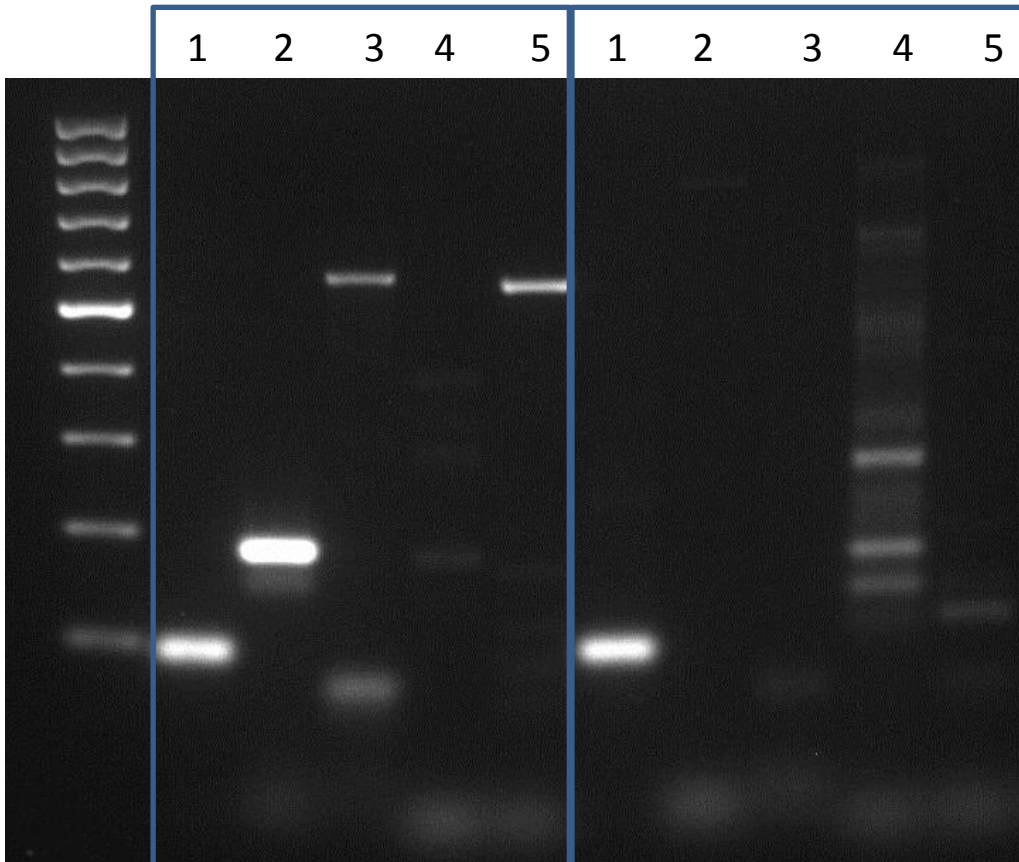


#	Primer
1	GAPDH
2	SeV
3	c-Myc
4	KLF4
5	KOS

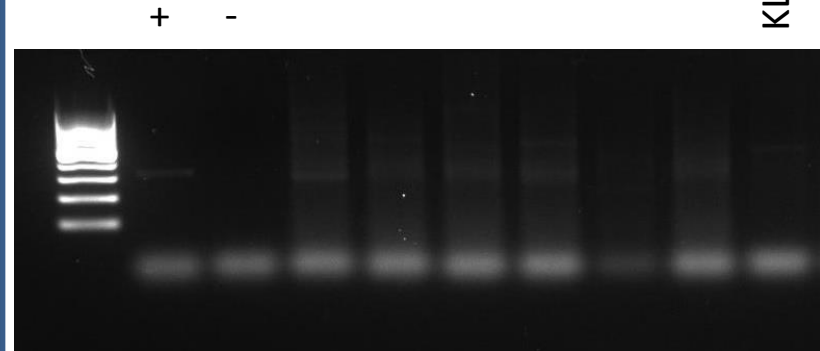
Sendai clearance: according to WP3 SOP15 undetectable at passage 16

Positive control

SFC021-03-02



KLF4 positive control repeat:



KLF4, SFC021-03-02

- KLF4 positive control required a repeat →

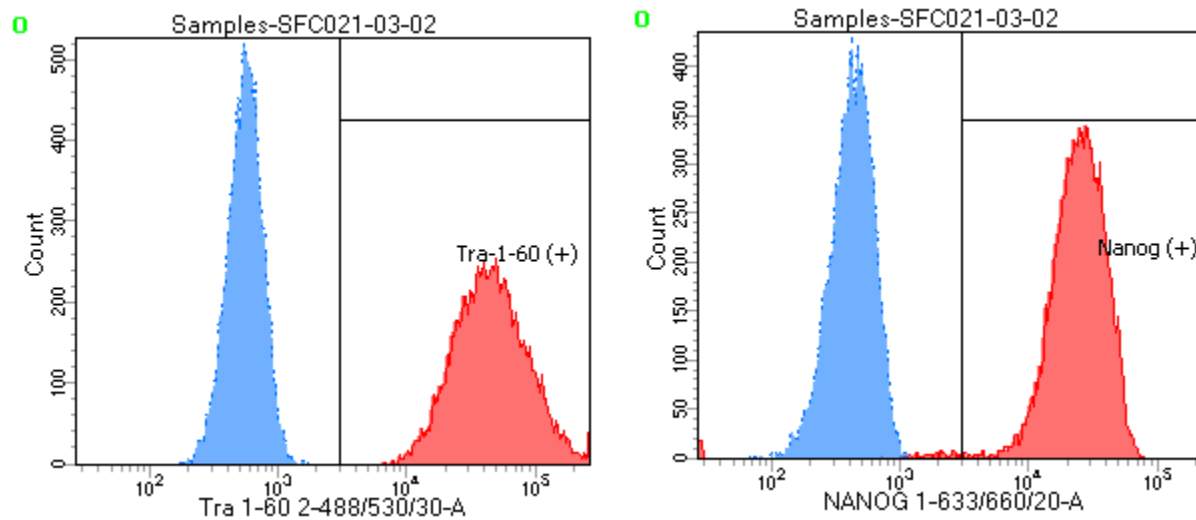
Mycoplasma test:

According to MycoAlert Lonza LT07-318

Undetectable at passage 16

Owner	KG					
Date	07/10/2014					
Cell name	21-02					
A	0.0141					
B	0.0045					
B/A	0.319148936					
0-0.9		Mycoplasma Contaminated			Positive Control	Negative Control
0.9-1.2		Status Unknown - Restest within 24 hours			0.0397	0.0645
> 1.2		Mycoplasma Free			1.038	0.0029
					26.14609572	0.04496124

Flow cytometric analysis according to WP3 SOP 20 and 21 passage 16



Tube: SFC021-03-02

Population	#Events	%Parent	%Total
■ All Events	20,000	####	100.0
■ Cells	11,170	55.8	55.8
☒ Tra-1-60 (+)	11,165	100.0	55.8
☒ Nanog (+)	10,936	97.9	54.7
■ Samples/21-Un/All Events	20,000	####	100.0
■ Samples/21-Un/P1	10,852	54.3	54.3

SNP analysis

according to WP3 SOP Preparation of DNA and RNA samples for Illumina arrays

- Passage 16
- Identity to parent fibroblasts confirmed
- Karyotype abnormalities: none detected
- For details and raw data see StemDB

Comment

- Two reprogrammings necessary and not many pickable clones
- Prone to differentiation, try ReLESR passaging
- Accutase induces morphology change