



Certificate of analysis

SFC066-03-01

Operator: C.Browne

Date: 20/06/16

Supervisor: Sally Cowley

Date: 14/07/2017

Signature:

SACowley

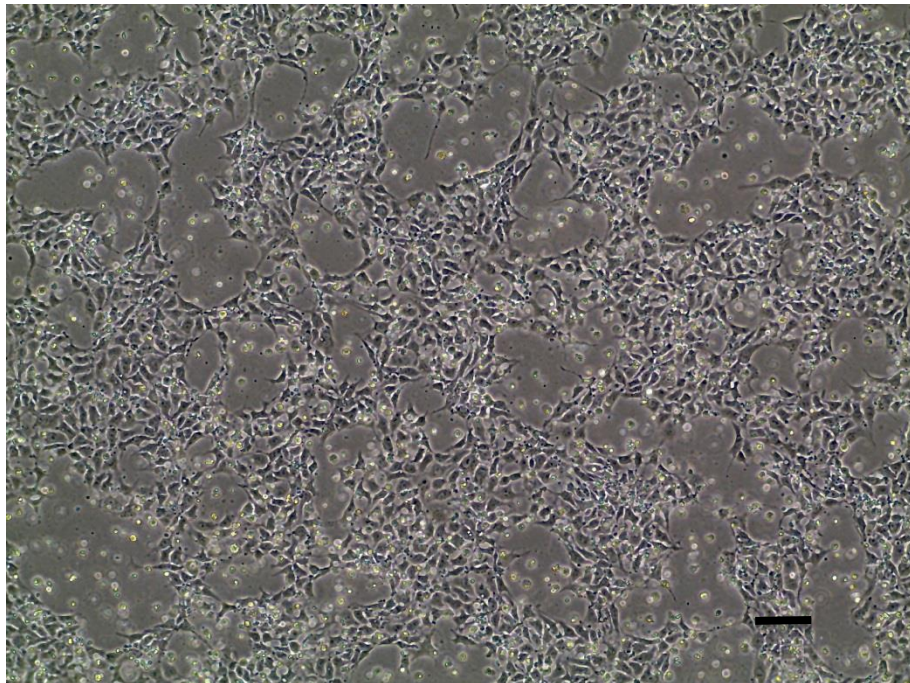
Source of fibroblasts and reprogramming information

- SF066 from Lubeck 27/05/15
- Reprogrammed at UOXF-S
- Reprogrammed on 06/04/16 at passage p3/CB
- Cytotune v2 WP3 SOP10

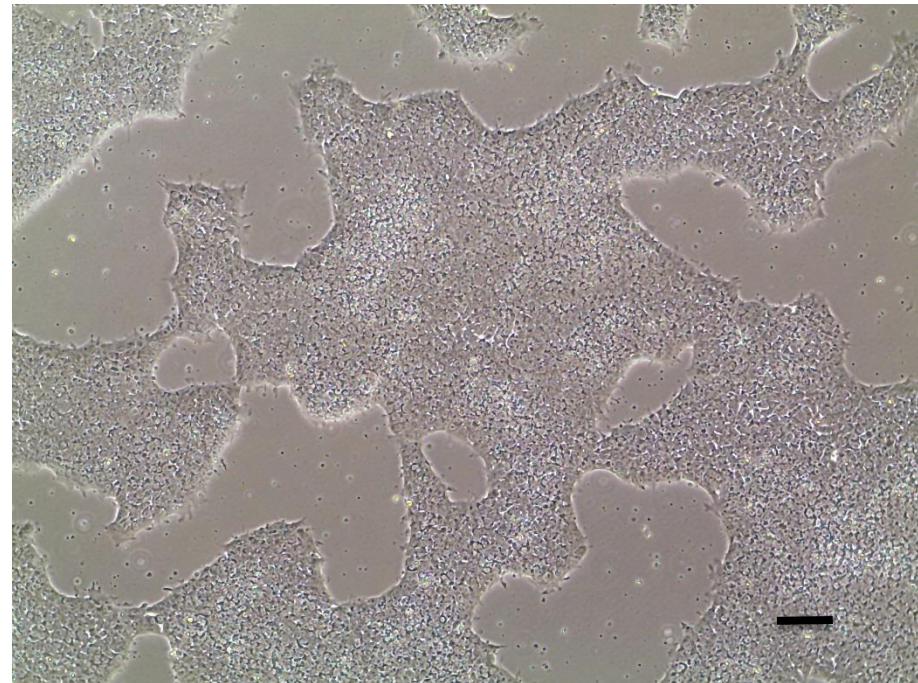
Viability post-thaw and Morphology according to SOP19 passage p10

- Cell count immediately post-thaw 4.84×10^6
- Viability immediately post-thaw 91.8%
- Photo at 24h and day 4 post-thaw (scale bar = $100\mu\text{m}$):

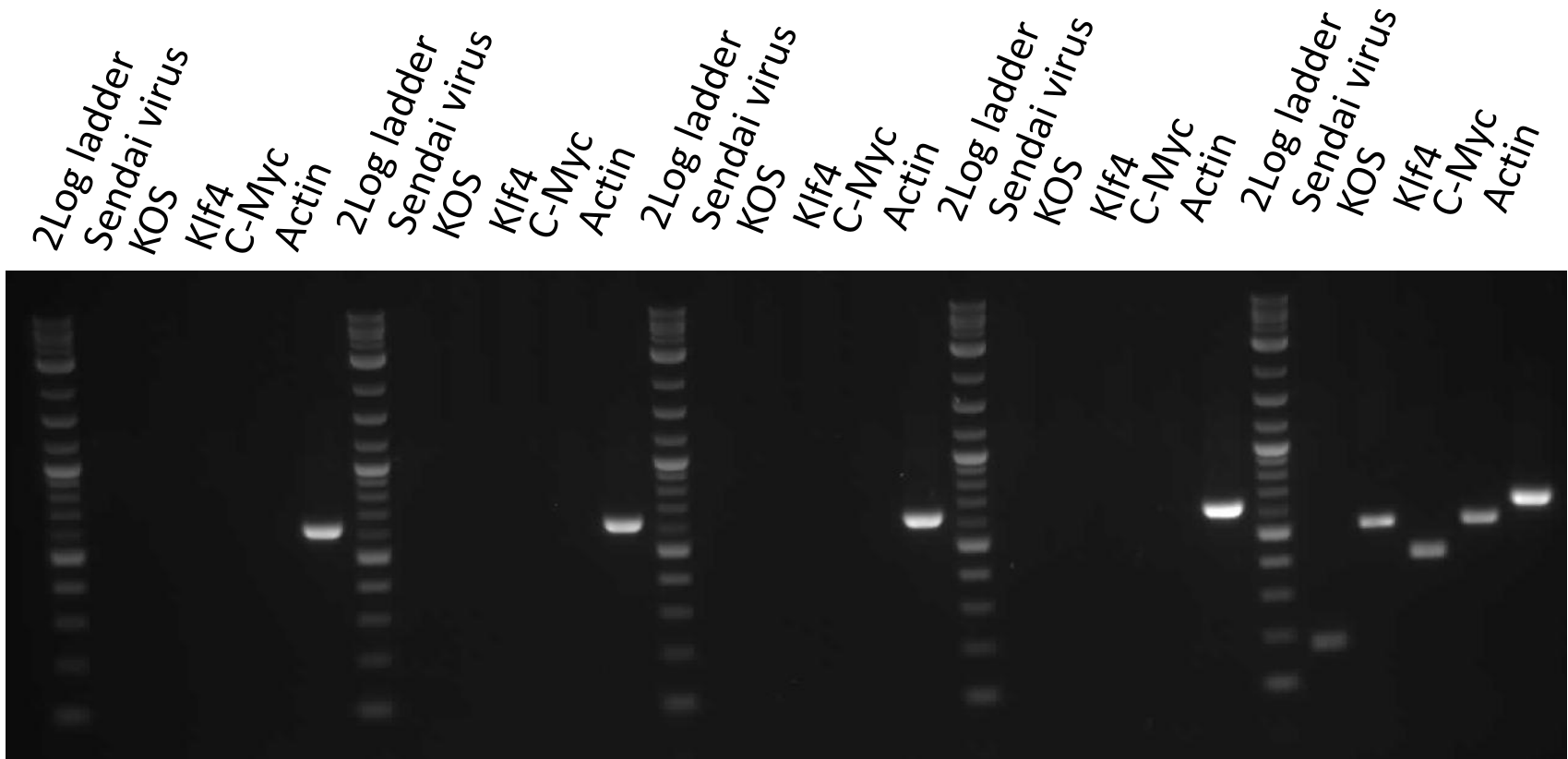
24h post-thaw 80% plated



Day 4 post-thaw 20% plated



Sendai clearance: according to WP3 SOP15 undetectable at passage 10



SFC063-03-01

SFC066-03-01

SFC069-03-03

SFC167-03-04

+ control

Product sizes: SeV 181bp; KOS 528bp; SeV-Klf 410bp; SeV-Myc 532bp; Actin 623bp

Mycoplasma Test:

According to MycoAlert Lonza LT07-318 undetectable at passage p10

Sample	Clone	Passage number	Initial	Reading 1	Reading 2	Ratio/Status
+ve control				9.985	138.1	13.83
-ve control				3.056	0.293	0.10
3	SFC066-03-01	p10	CB	2.265	0.938	0.41

Results mean

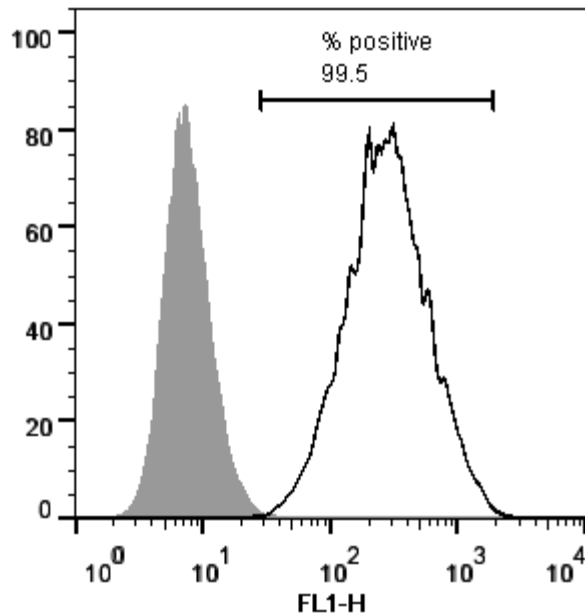
Ratio **0 - 0.999** negative for mycoplasma

Ratio **1 – 1.3** Borderline Result (retest required)

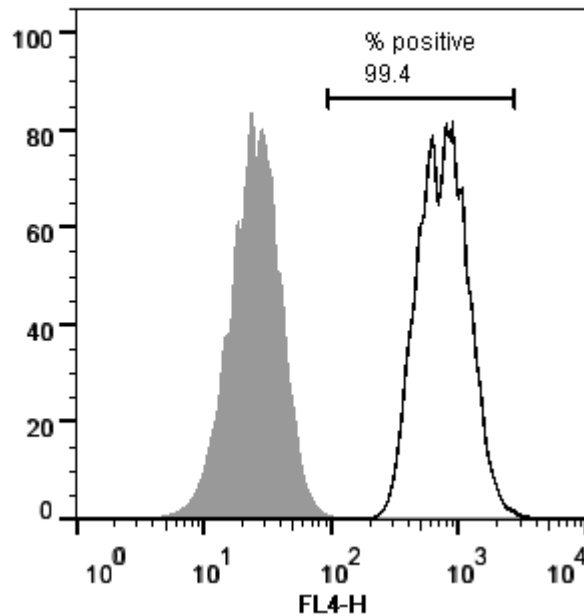
Ratio above **1.3** positive for mycoplasma

Flow cytometric analysis according to WP3 SOP 20 and 21 passage p10

Tra-1-60:



NANOG:



SNP analysis

according to WP3 SOP Preparation of DNA and RNA samples for Illumina arrays

- Passage p10
- Identity to parent fibroblasts confirmed
- Karyotype abnormalities: none detected
- For details and raw data see StemDB