



# Certificate of analysis

SFC841-03-02

Operator: Jane Vowles

Date: 08/01/2015

Supervisor: Sally Cowley

Date: 18/06/2015

Signature:

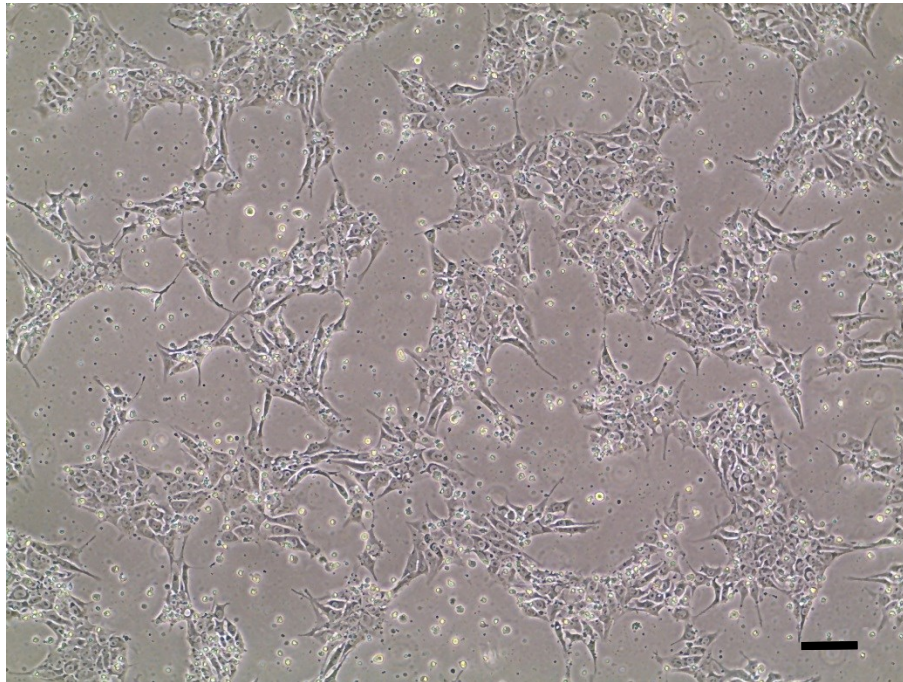
*SACowley*

# Source of fibroblasts and reprogramming information

- SF841 from UOXF 01/11/2010
- Reprogrammed at UOXF JMSCF by JV
- Reprogrammed on 13/12/2012 at passage 5
- Cytotune v1 WP3 SOP10

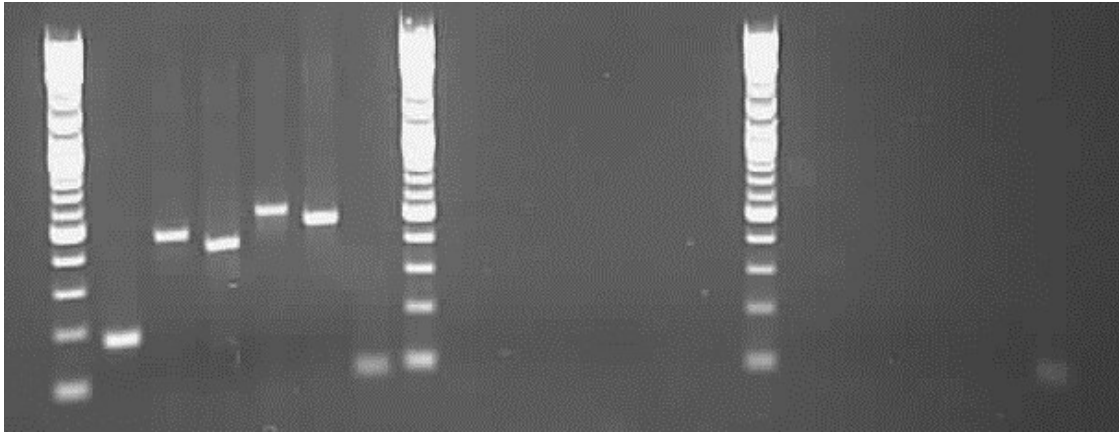
# Viability post-thaw and Morphology according to SOP19 p27

- Cell count immediately post-thaw  $2.02 \times 10^6$
- Viability immediately post-thaw 70.35%
- Photo at 24h post-thaw (scale bar =  $100\mu\text{m}$ ):



# Sendai clearance: according to WP3 SOP15 undetectable at passage 27

2Log ladder  
Sendai virus  
Sox2  
Klf4  
C-Myc  
Oct3/4  
Actin  
Log2 ladder  
Sendai virus  
Sox2  
Klf4  
C-Myc  
Oct3/4  
Actin  
2Log ladder  
Sendai virus  
Sox2  
Klf4  
C-Myc  
Oct3/4  
Actin



+ control

[SFC841-03-02]

**SFC841-03-02**

Product sizes: SeV 181bp; SeV-Sox 451bp; SeV-Klf 410bp; SeV-Myc 532bp; SeV-Oct 483bp; Actin 92bp

# Mycoplasma test:

## According to MycoAlert Lonza LT07-318

### Undetectable at passage 27

Sample	Passage	Initials	Reading 1	Reading 2	Ratio / Status
+ve Control			5.053	172	<b>34.04</b>
-ve Control			6.852	0.758	<b>0.111</b>
1. SFC 841-03-02	p27	CB	1.980	0.959	<b>0.484</b>

Results mean

Ratio **0 - 0.999** negative for mycoplasma

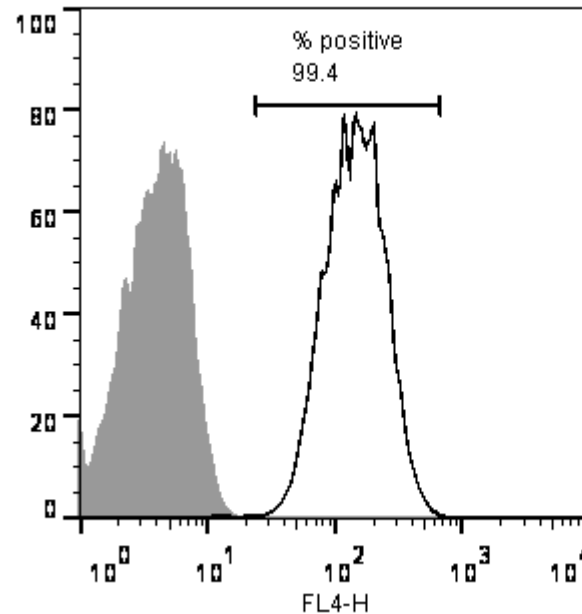
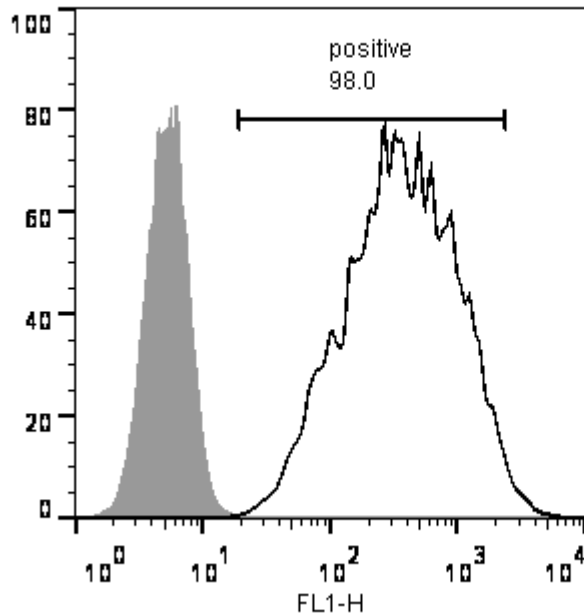
Ratio **1 – 1.3** Borderline Result (retest required)

Ratio above **1.3** positive for mycoplasma

# Flow cytometric analysis according to WP3 SOP 20 and 21 passage p27

Tra-1-60:

NANOG:



# SNP analysis

according to WP3 SOP Preparation of DNA and RNA samples for Illumina arrays

- Passage 27
- Identity to parent fibroblasts confirmed
- Karyotype abnormalities: none detected
- For details and raw data see StemDB