

Certificate of analysis

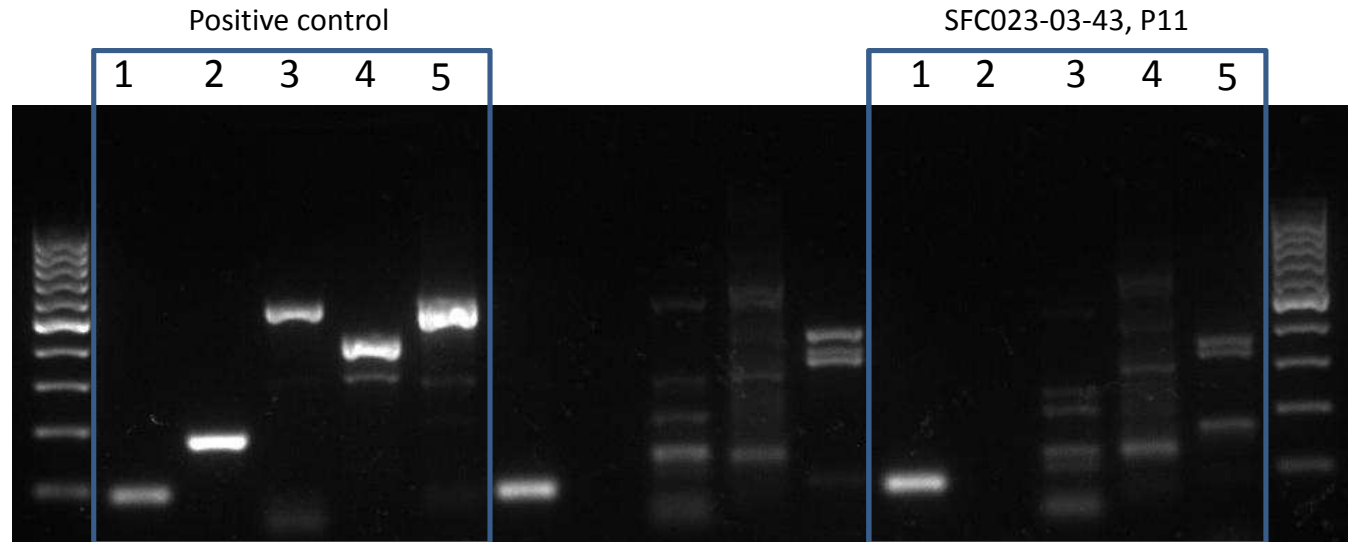
SFC-023-03-43

Source of fibroblasts

SF023, migraine patient, biopsy taken in Glostrup

#	Primer
1	GAPDH
2	SeV
3	KOS
4	KLF4
5	c-MYC

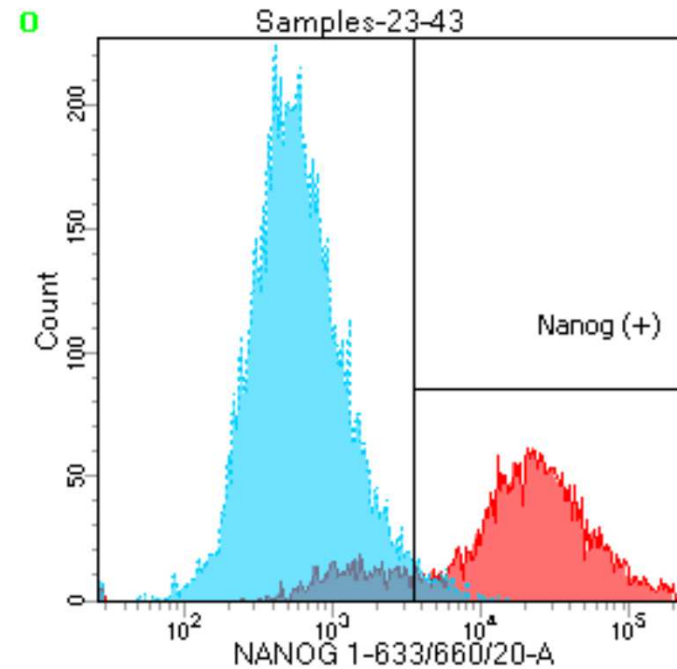
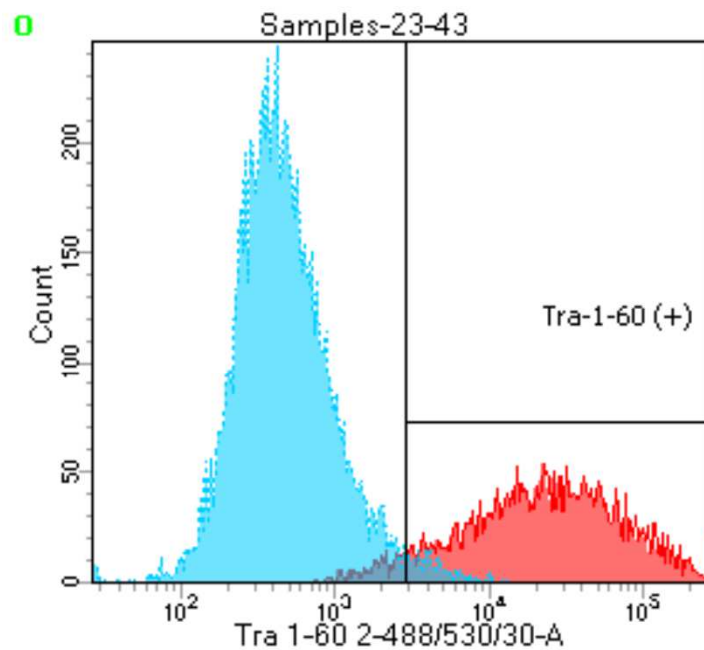
Sendai Clearance



Flow cytometric analysis

TRA-1-60: 92.7%

NANOG: 82.2%



CytoSNP analysis

Identity to parent fibroblasts

- confirmed

Karyotype abnormalities

- none