



# Certificate of analysis

SFC063-03-01

Operator: Jane Vowles

Date: 20/06/16

Supervisor: Sally Cowley

Date: 14/07/2017

Signature:

*SACowley*

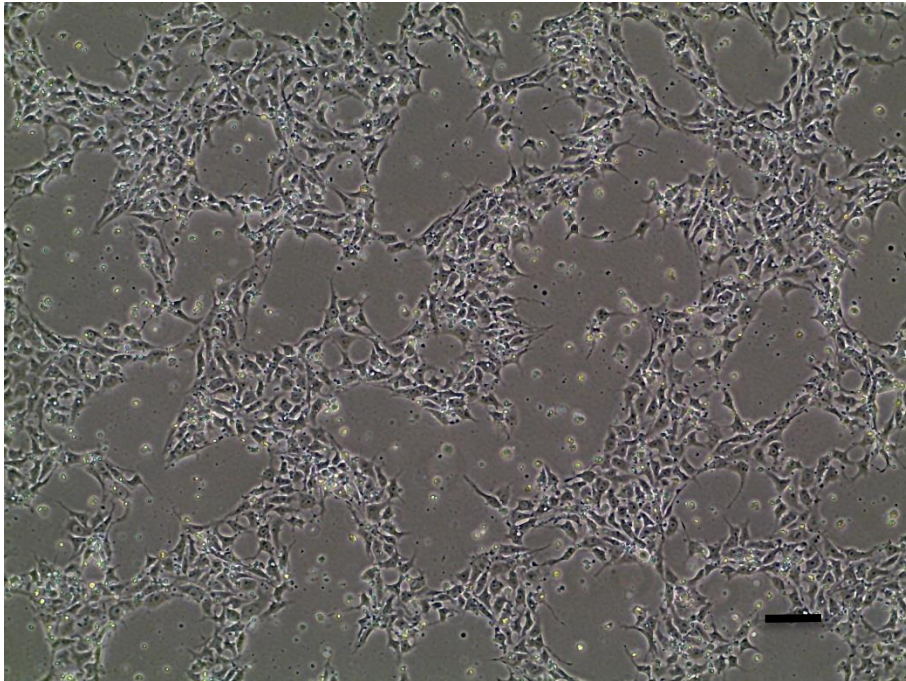
# Source of fibroblasts and reprogramming information

- SF063 from Lubeck 19/01/2016
- Reprogrammed at UOXF-S
- Reprogrammed on 14/04/16 at passage 3/JV
- Cytotune v2 WP3 SOP10

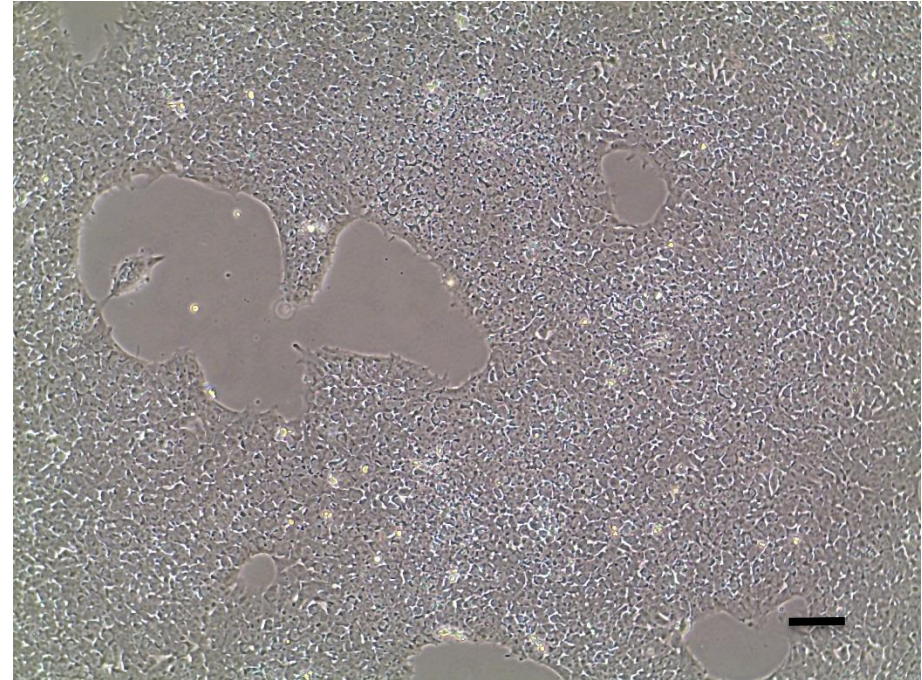
# Viability post-thaw and Morphology according to SOP19 passage p10

- Cell count immediately post-thaw  $2.38 \times 10^6$
- Viability immediately post-thaw 81.45%
- Photo at 24h and day 4 post-thaw (scale bar =  $100\mu\text{m}$ ):

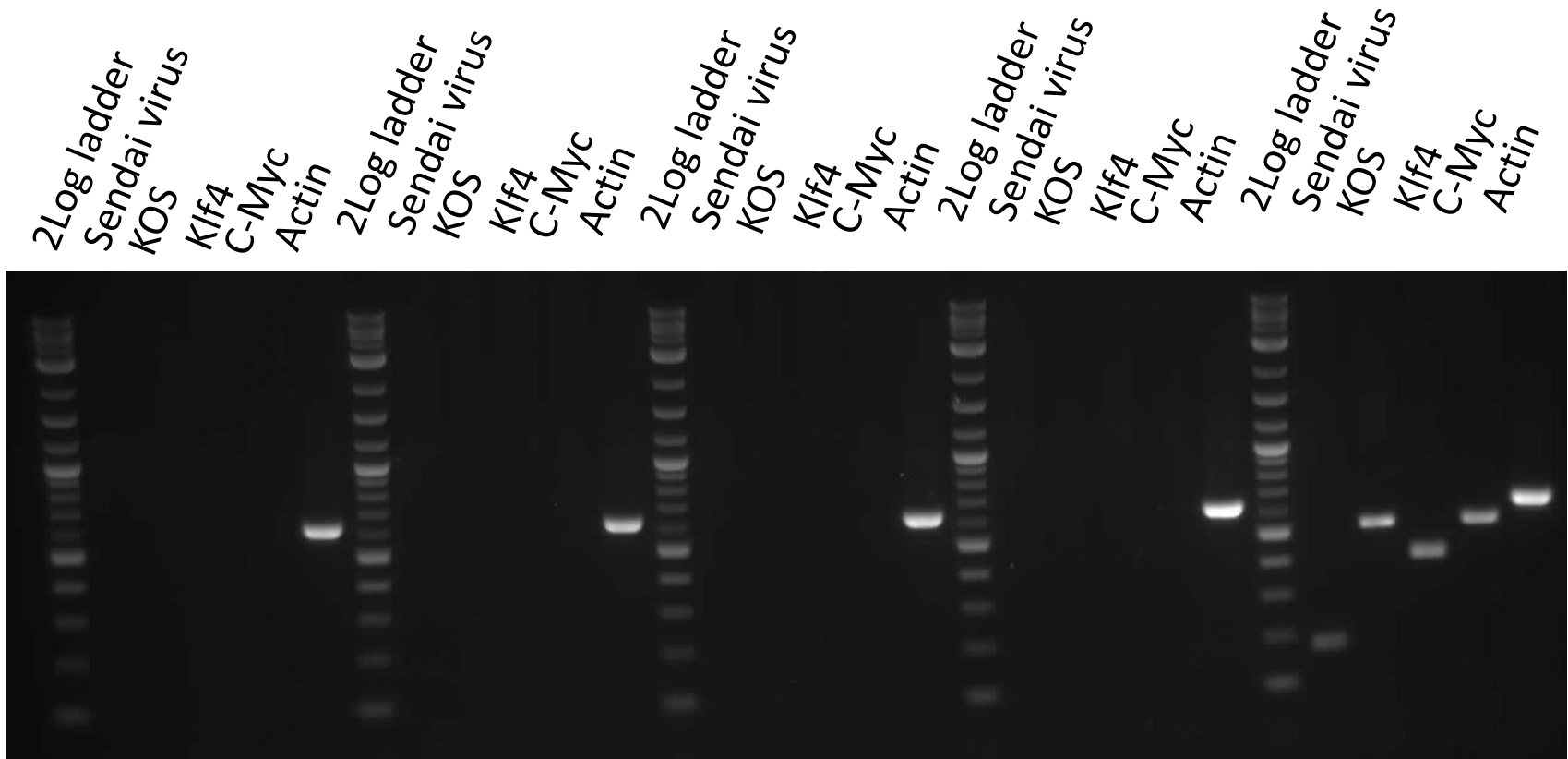
24h post-thaw 80% plated



Day 4 post-thaw 20% plated



# Sendai clearance: according to WP3 SOP15 undetectable at passage 10



**SFC063-03-01**

SFC066-03-01

SFC069-03-03

SFC167-03-04

+ control

Product sizes: SeV 181bp; KOS 528bp; SeV-Klf 410bp; SeV-Myc 532bp; Actin 623bp

# Mycoplasma Test:

## According to MycoAlert Lonza LT07-318 undetectable at passage p10

Sample	Clone	Passage number	Initial	Reading 1	Reading 2	Ratio/Status
+ve control				9.985	138.1	13.83
-ve control				3.056	0.293	0.10
1	SFC063-03-01	p10	CB/JV	1.782	0.889	0.50

Results mean

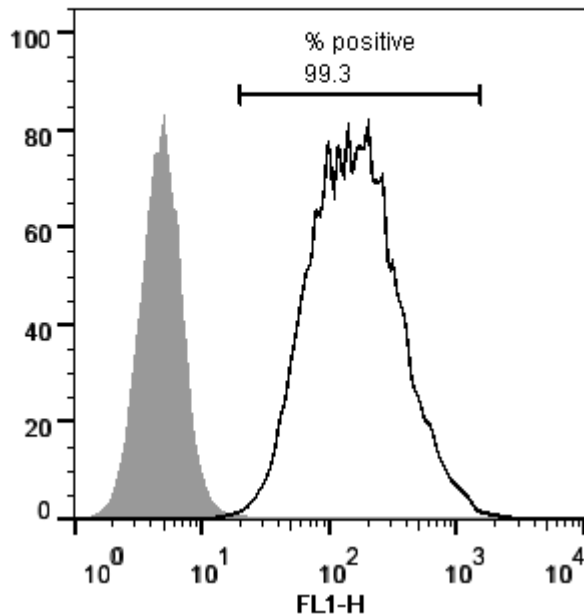
Ratio **0 - 0.999** negative for mycoplasma

Ratio **1 – 1.3** Borderline Result (retest required)

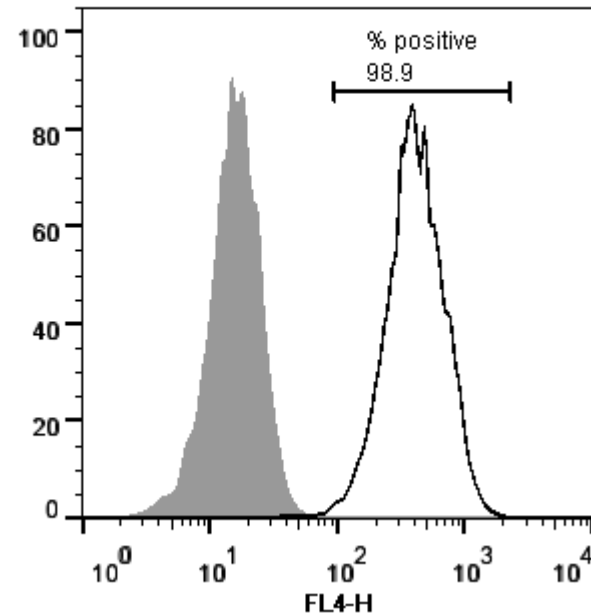
Ratio above **1.3** positive for mycoplasma

# Flow cytometric analysis according to WP3 SOP 20 and 21 passage p10

Tra-1-60:



NANOG:



# SNP analysis

according to WP3 SOP Preparation of DNA and RNA samples for Illumina arrays

- Passage p10
- Identity to parent fibroblasts confirmed
- Karyotype abnormalities: none detected
- For details and raw data see StemDB