



# Certificate of analysis

SFC069-03-01

Operator: C Browne

Date: 25/01/2017

Supervisor: Sally Cowley

Date: 14/07/2017

Signature:

*SACowley*

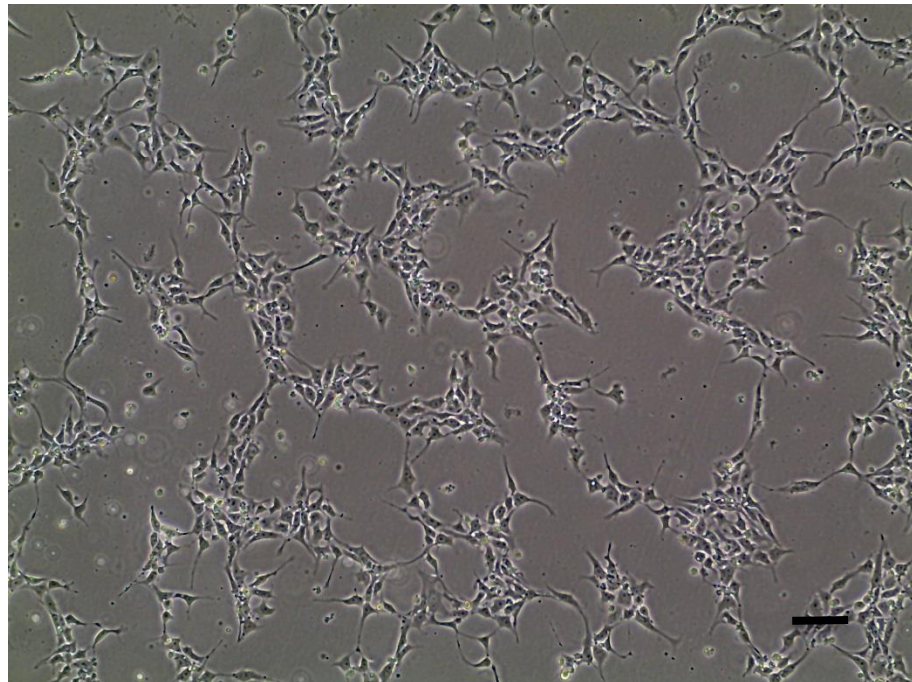
# Source of fibroblasts and reprogramming information

- SF069 from Luebeck 27/05/2015
- Reprogrammed at UOXF-S
- Reprogrammed on 06/04/2016 at passage 3/CB
- Cytotune v2 WP3 SOP10

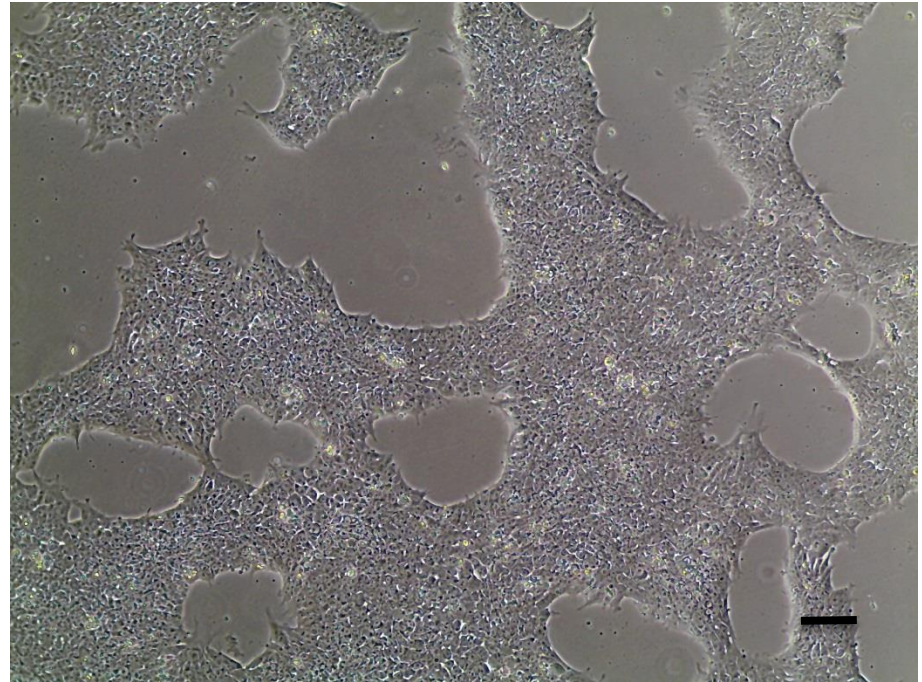
# Viability post-thaw and Morphology according to SOP19 passage 12

- Cell count immediately post-thaw  $1.3 \times 10^6$
- Viability immediately post-thaw 92%
- Photo at 24h and day 3 post-thaw (scale bar =  $100\mu\text{m}$ ):

24h post-thaw 80% plated



Day 3 post-thaw 80% plated



# Sendai clearance: according to WP3 SOP15 nondetectable at passage 12

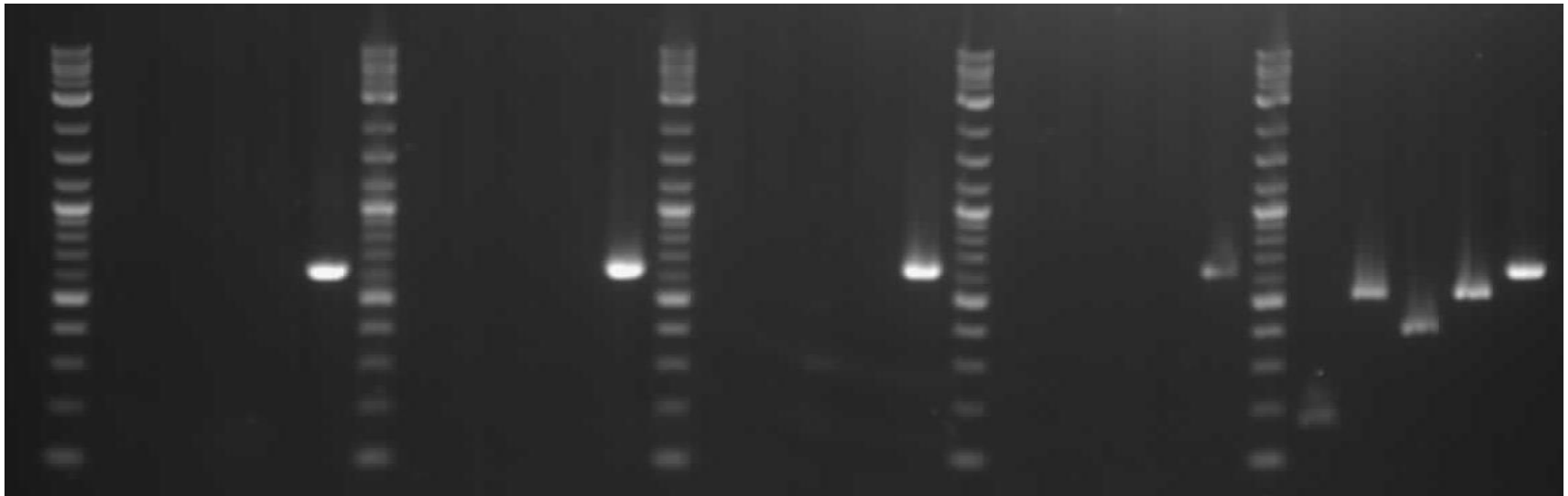
2Log ladder  
Sendai virus  
KOS  
Klf4  
C-Myc  
Actin

2Log ladder  
Sendai virus  
KOS  
Klf4  
C-Myc  
Actin

2Log ladder  
Sendai virus  
KOS  
Klf4  
C-Myc  
Actin

2Log ladder  
Sendai virus  
KOS  
Klf4  
C-Myc  
Actin

2Log ladder  
Sendai virus  
KOS  
Klf4  
C-Myc  
Actin



SFC866-03-05

**SFC069-03-01**

SFC139-03-06

SFC843-03-09

+ control

Product sizes: SeV 181bp; KOS 528bp; SeV-Klf 410bp; SeV-Myc 532bp; Actin 623bp

# Mycoplasma Test:

## According to MycoAlert Lonza LT07-318 undetectable at passage 12

| Sample              | Passage number | Initial   | Reading 1    | Reading 2    | Ratio/Status |
|---------------------|----------------|-----------|--------------|--------------|--------------|
| +ve control         |                |           | 5.477        | 116.6        | <b>21.29</b> |
| -ve control         |                |           | 6.458        | 1.612        | <b>0.25</b>  |
| SFC843-03-09        | p10            | JV        | 1.992        | 0.96         | 0.48         |
| SFC139-03-06        | p10            | JV        | 2.598        | 1.022        | 0.39         |
| <b>SFC069-03-01</b> | <b>p12</b>     | <b>JV</b> | <b>1.552</b> | <b>0.746</b> | <b>0.48</b>  |

Results mean

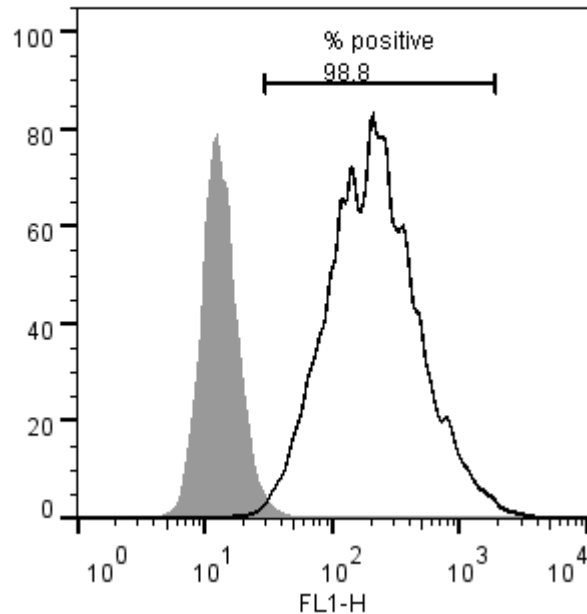
Ratio **0 - 0.999** negative for mycoplasma

Ratio **1 - 1.3** Borderline Result (retest required)

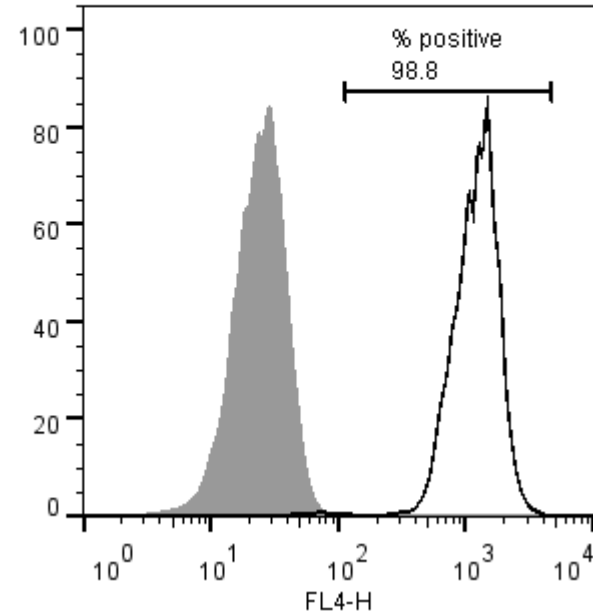
Ratio above **1.3** positive for mycoplasma

# Flow cytometric analysis according to WP3 SOP 20 and 21 passage 12

Tra-1-60:



NANOG:



# SNP analysis

according to WP3 SOP Preparation of DNA and RNA samples for Illumina arrays

- Passage 12
- Identity to parent fibroblasts confirmed
- Karyotype abnormalities: none detected
- For details and raw data see StemDB