



Certificate of analysis

SFC831-03-01

Operator: Federica Rinaldi Date: 07/08/2014

Supervisor signature: Sally Cowley Date: 31.08.2014

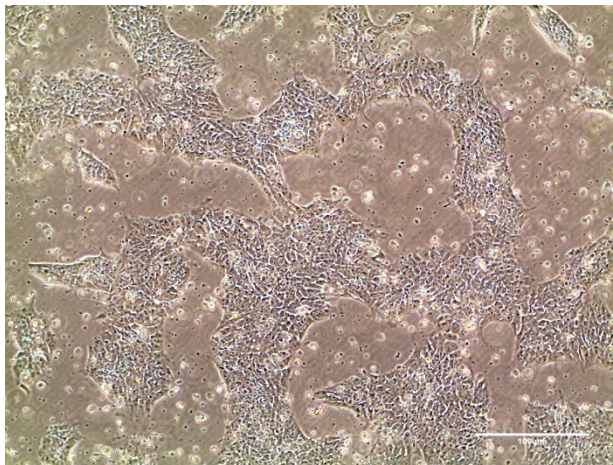
SACowley

Source of fibroblasts and reprogramming information

- SF831 from UCL
- Reprogrammed at UOXF JMSCF (03/10/13 WH)
- Reprogrammed on 03/10/2013 at p.5
- Cytotune v1 WP3 SOP10

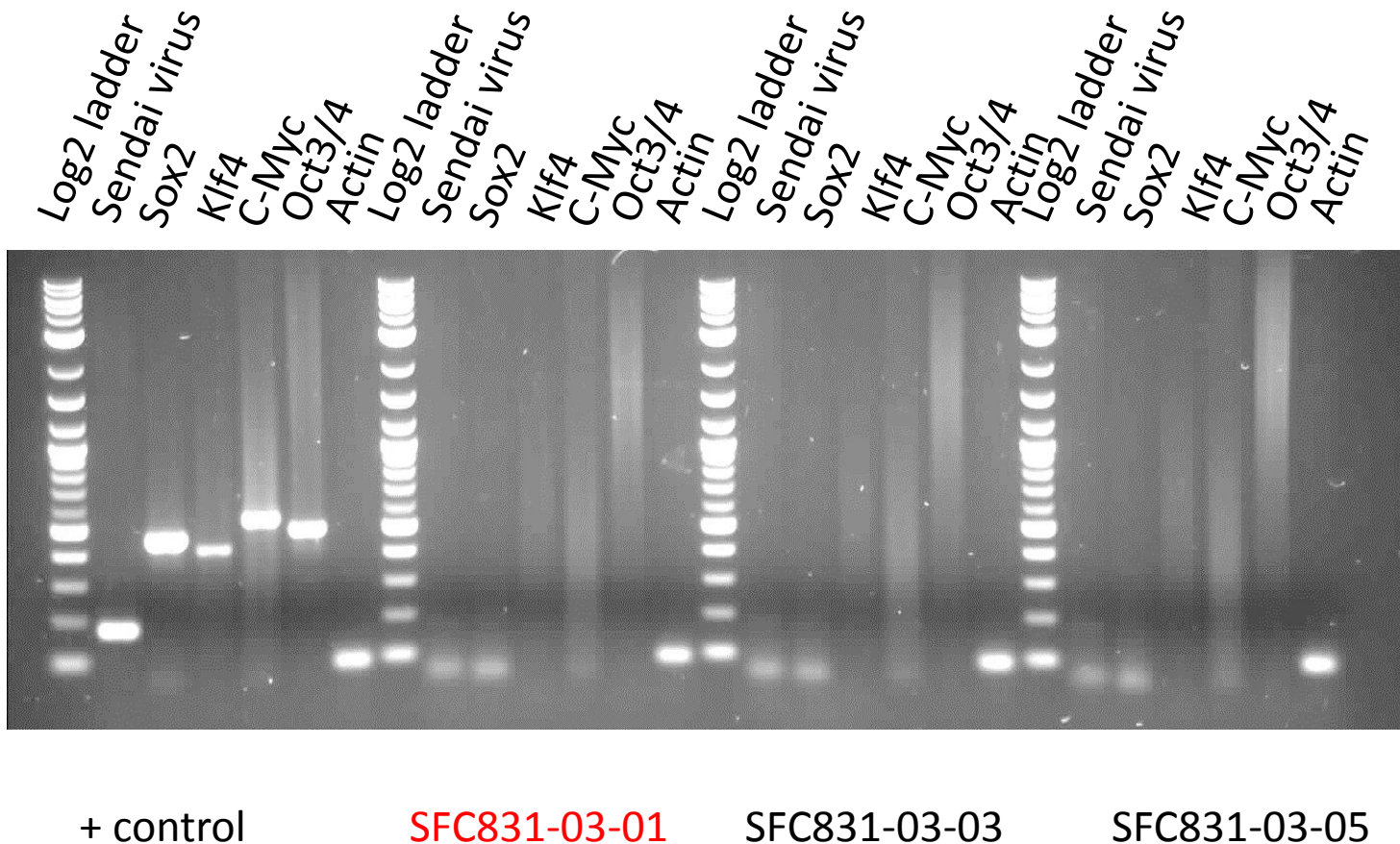
Viability post-thaw and Morphology according to SOP19 passage 20

- Cell count immediately post-thaw 2.2×10^6
- Viability immediately post-thaw 92%
- Photo at 24h post-thaw:



Bar = 330um

Sendai clearance: according to WP3 SOP15 undetectable at passage 18



Product sizes: SeV 181bp; SeV-Sox 451bp; SeV-Klf 410bp; SeV-Myc 532bp; SeV-Oct 483bp; Actin 92bp

Mycoplasma test:

According to MycoAlert Lonza LT07-318

Undetectable at passage 20

Sample	Reading 1	Reading 2	Ratio / Status
+ve Control	7.803	344.1	44.098
-ve Control	13.21	1.575	0.119
1. SFC831-03.01	3.090	1.633	0.528

Results mean

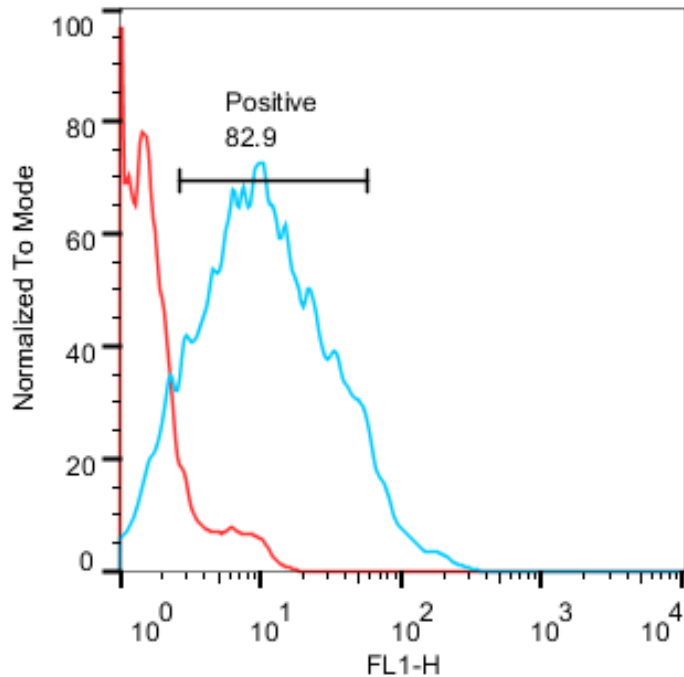
Ratio **0 - 0.999** negative for mycoplasma

Ratio **1 – 1.3** Borderline Result (retest required)

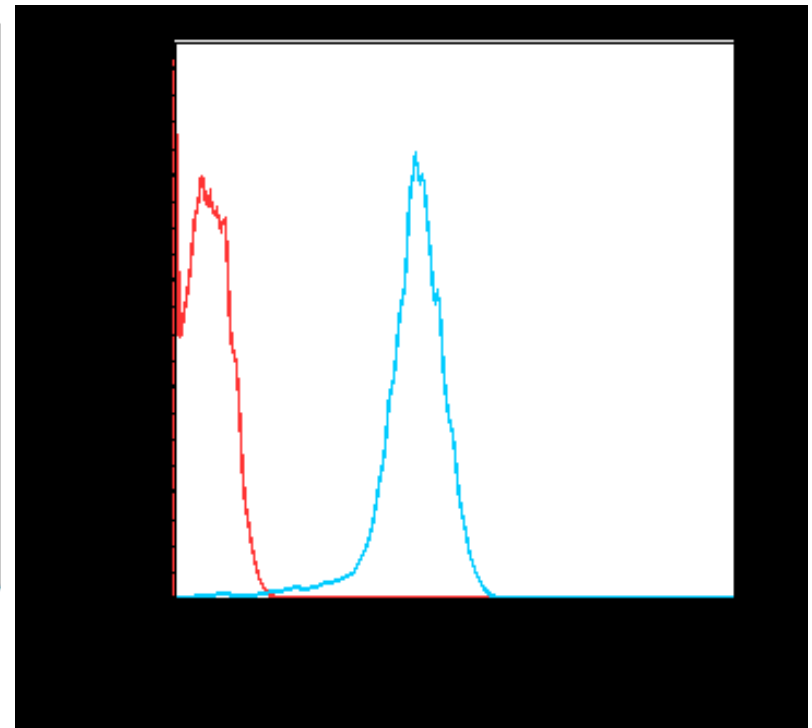
Ratio above **1.3** positive for mycoplasma

Flow cytometric analysis according to WP3 SOP 20 and 21 passage 21

Tra-1-60: 82.9%



NANOG:



SNP analysis

according to WP3 SOP Preparation of DNA and RNA samples for Illumina arrays

- Passage 18
- Identity to parent fibroblasts confirmed
- Karyotype abnormalities acceptable: 1 minor region Chr 4 higher CNV vs fibroblasts
- For details and raw data see StemDB