



# Certificate of analysis

SFC855-03-06

Operator: C Browne

Date: 01/07/15

Supervisor: Sally Cowley

Date: 16.09.2015

Signature:

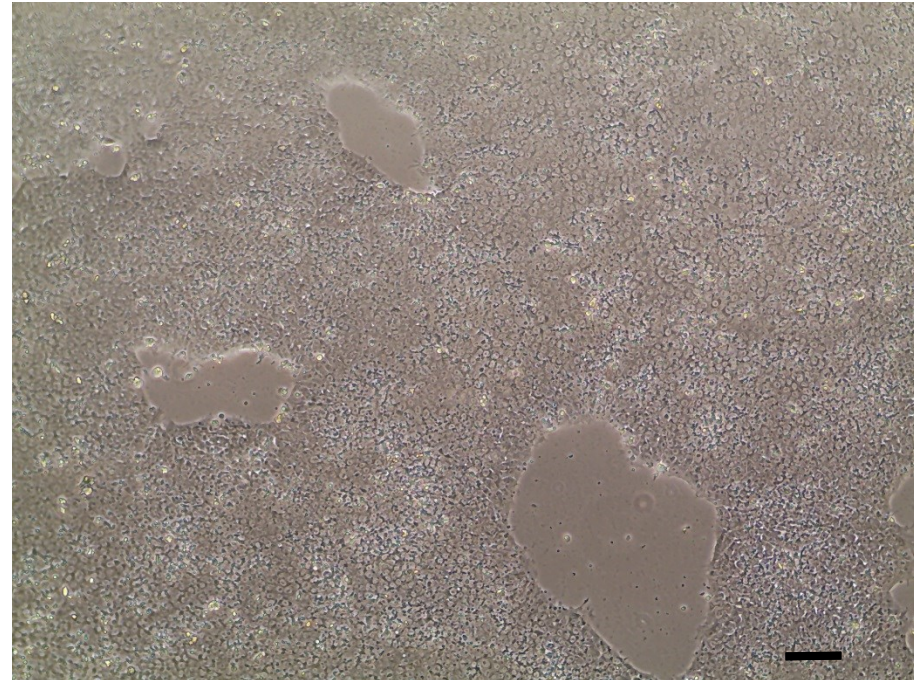
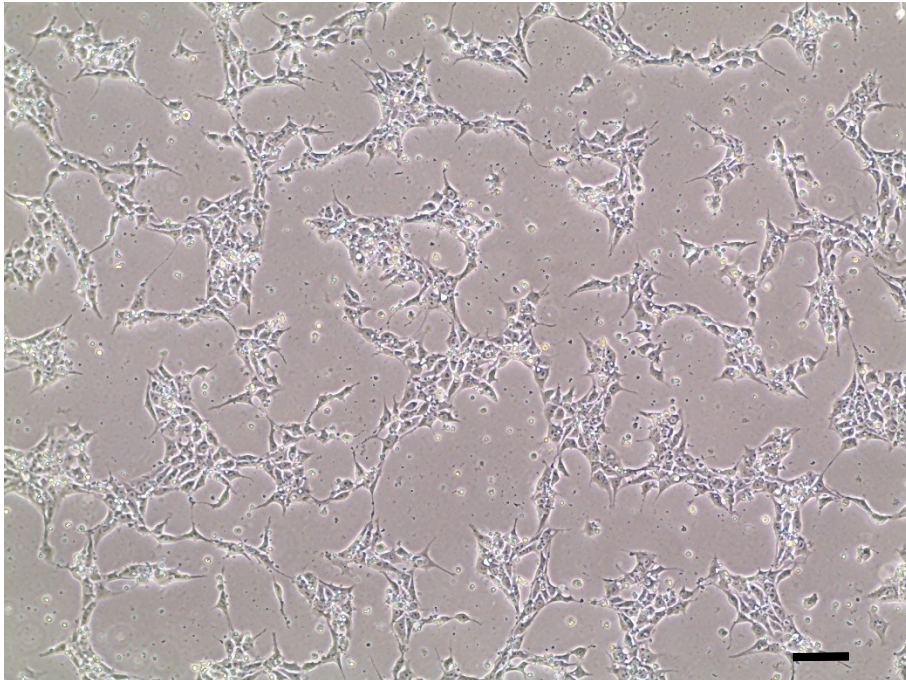
*SACowley*

# Source of fibroblasts and reprogramming information

- SF855 from Oxford University Hospitals  
10/02/14
- Reprogrammed at UOXF JMSCF CB
- Reprogrammed on 05/09/14 at passage 4
- Cytotune v1 WP3 SOP10

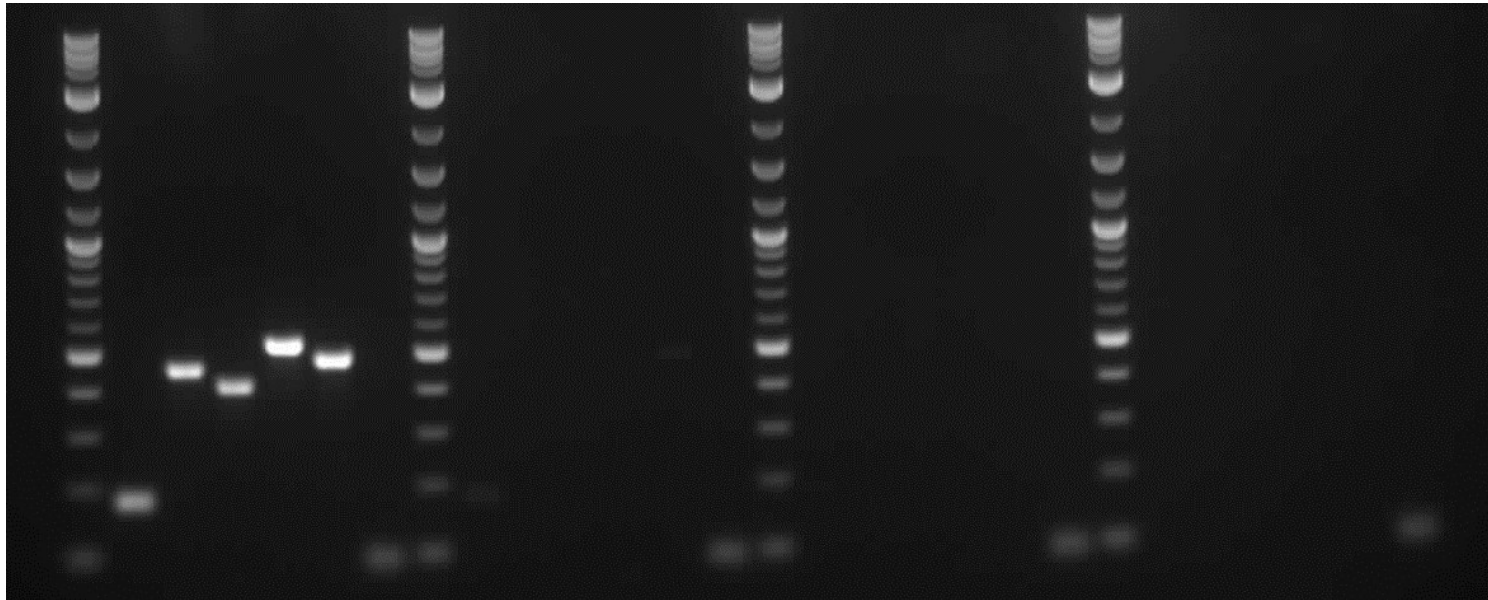
# Viability post-thaw and Morphology according to SOP19 passage 15

- Cell count immediately post-thaw  $3.8 \times 10^6$
- Viability immediately post-thaw 87%
- Photo at 24h & day 6 post-thaw (scale bar =  $100\mu\text{m}$ ):



# Sendai clearance: according to WP3 SOP15 undetectable at passage 15

2Log ladder  
Sendai virus  
Sox2  
Klf4  
C-Myc  
Oct3/4  
Actin  
2Log ladder  
Sendai virus  
Sox2  
Klf4  
C-Myc  
Oct3/4  
Actin  
2Log ladder  
Sendai virus  
Sox2  
Klf4  
C-Myc  
Oct3/4  
Actin  
2Log ladder  
Sendai virus  
Sox2  
Klf4  
C-Myc  
Oct3/4  
Actin



+ control

SFC855-03-01

SFC855-03-06

SFC855-03-08

Product sizes: SeV 181bp; SeV-Sox 451bp; SeV-Klf 410bp; SeV-Myc 532bp; SeV-Oct 483bp; Actin 92bp

# Mycoplasma Test:

## According to MycoAlert Lonza LT07-318 undetectable at passage 15

Sample	Clone	Passage number	Initial	Reading 1	Reading 2	Ratio/Status
+ve control				8.539	88.04	<b>10.31</b>
-ve control				9.475	0.883	<b>0.09</b>
5	SFC855-03-06	p15	CB	3.884	1.602	<b>0.41</b>

Results mean

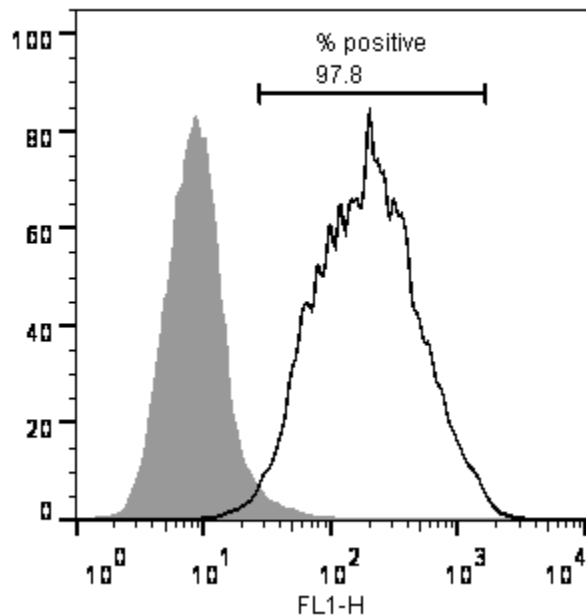
Ratio **0 - 0.999** negative for mycoplasma

Ratio **1 – 1.3** Borderline Result (retest required)

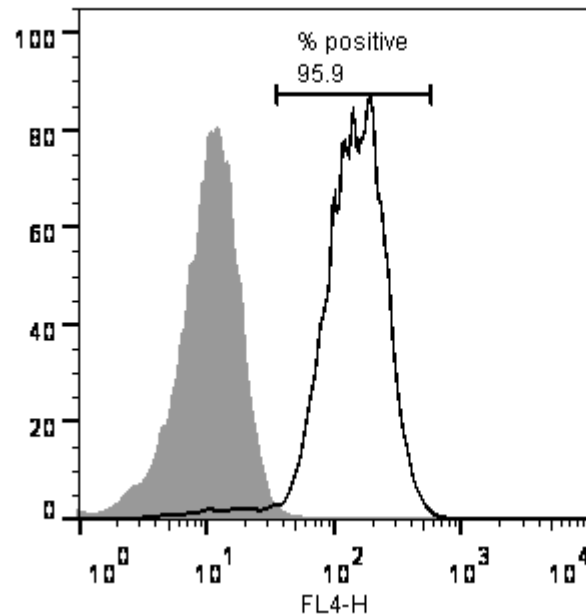
Ratio above **1.3** positive for mycoplasma

# Flow cytometric analysis according to WP3 SOP 20 and 21 assage p15

Tra-1-60:



NANOG:



# SNP analysis

according to WP3 SOP Preparation of DNA  
and RNA samples for Illumina arrays

- Passage p15
- Identity to parent fibroblasts confirmed
- Karyotype abnormalities: none detected
- For details and raw data see StemDB