



Certificate of analysis

SFC868-03-10

Operator: Jane Vowles

Date: 17/02/2016

Supervisor: Sally Cowley

Date: 18/06/2016

Signature:

SACowley

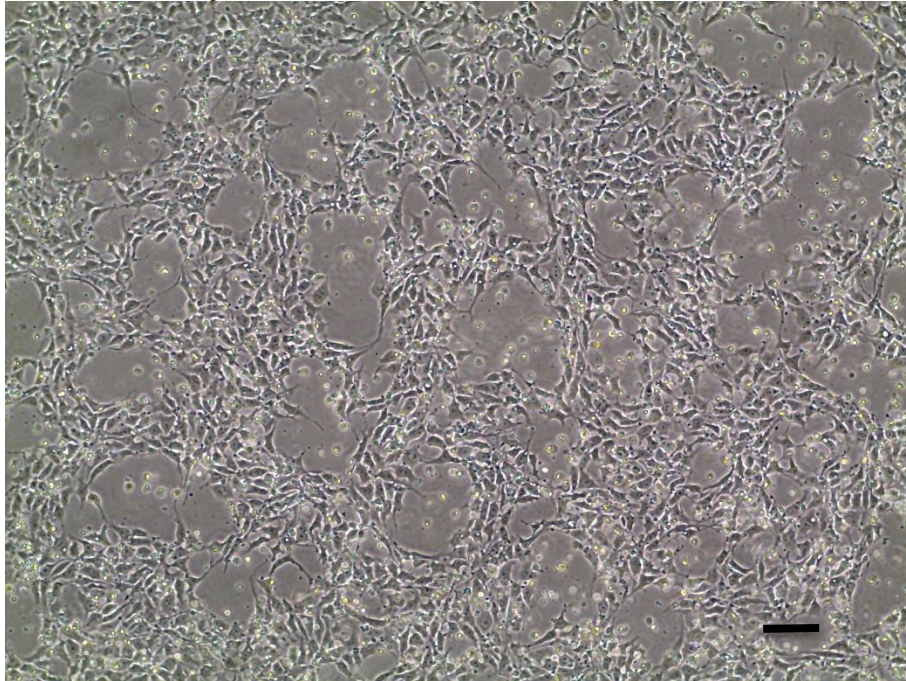
Source of fibroblasts and reprogramming information

- SF868 from Oxford University 21/02/2011
- Reprogrammed at UOXF-S
- Reprogrammed on 06/08/2015 at passage 4, CB
- Cytotune v2 WP3 SOP10

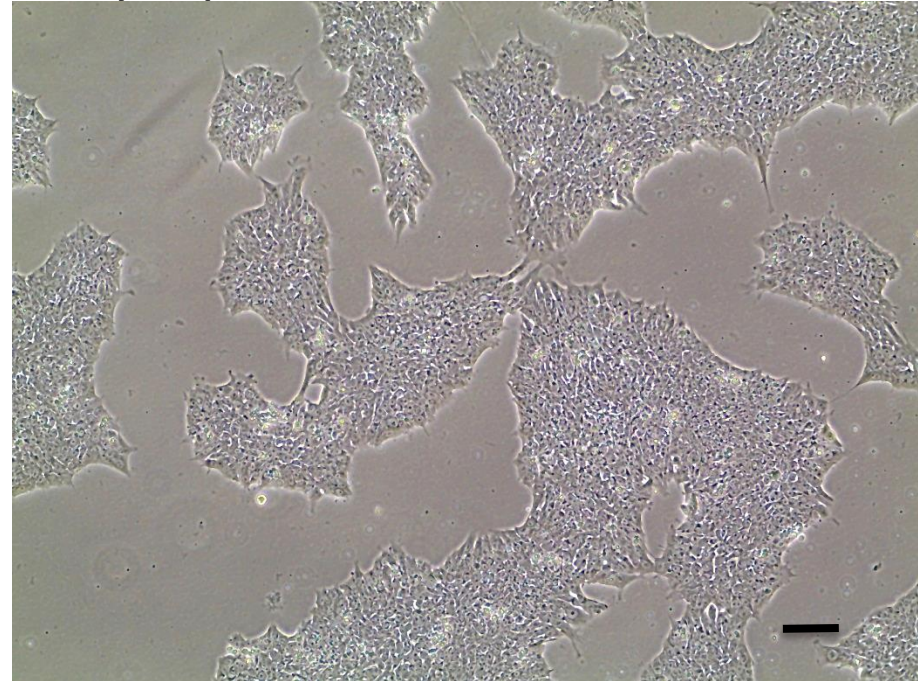
Viability post-thaw and Morphology according to SOP19 passage 12

- Cell count immediately post-thaw 4.1×10^6
- Viability immediately post-thaw 84%
- Photo at 24h and 3 day post-thaw (scale bar = $100\mu\text{m}$):

24h post-thaw 80% plated

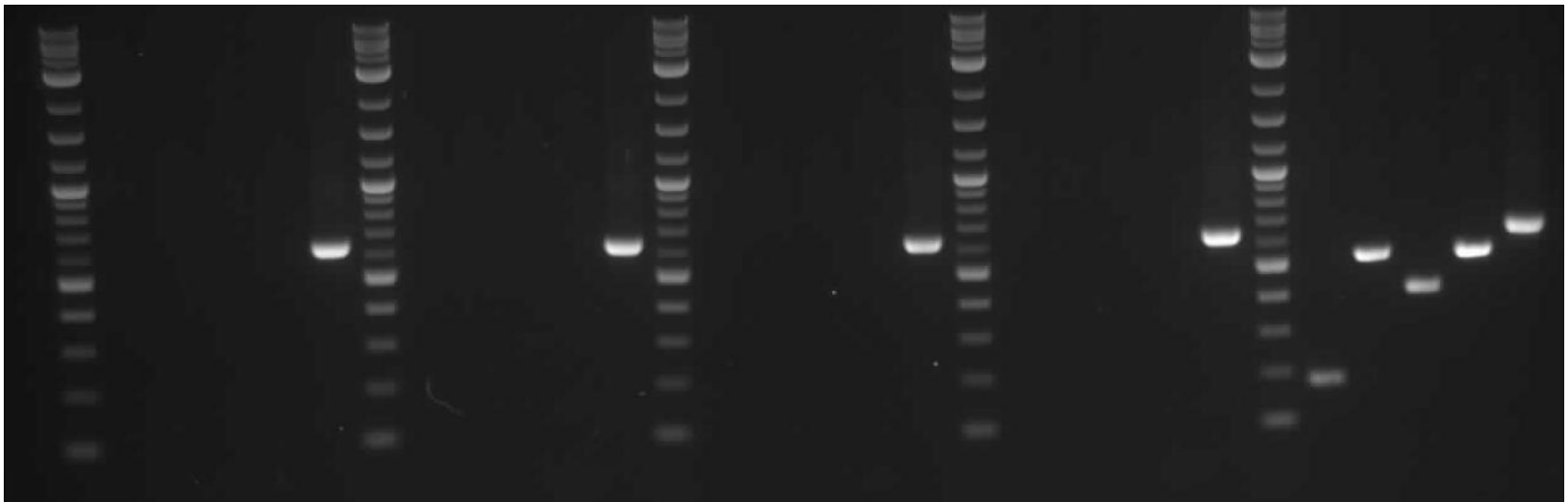


Day 3 post-thaw 20% plated



Sendai clearance: according to WP3 SOP15 undetectable at passage 12

2Log ladder
Sendai virus
KOS
Klf4
C-Myc
Actin
2Log ladder
Sendai virus
KOS
Klf4
C-Myc
Actin
2Log ladder
Sendai virus
KOS
Klf4
C-Myc
Actin
2Log ladder
Sendai virus
KOS
Klf4
C-Myc
Actin
2Log ladder
Sendai virus
KOS
Klf4
C-Myc
Actin



SFC868-03-10

SFC075-03-01

SFC075-03-03

SFC075-03-08

+ control

Product sizes: SeV 181bp; KOS 528bp; SeV-Klf 410bp; SeV-Myc 532bp; Actin 623bp

Mycoplasma Test:

According to MycoAlert Lonza LT07-318 undetectable at passage 12

Sample	Clone	Passage number	Initial	Reading 1	Reading 2	Ratio/Status
+ve control				2.99	167.9	56.15
-ve control				3.361	0.432	0.13
11	SFC868-03-10	p3+9	JV	1.58	1.04	0.66

Results mean

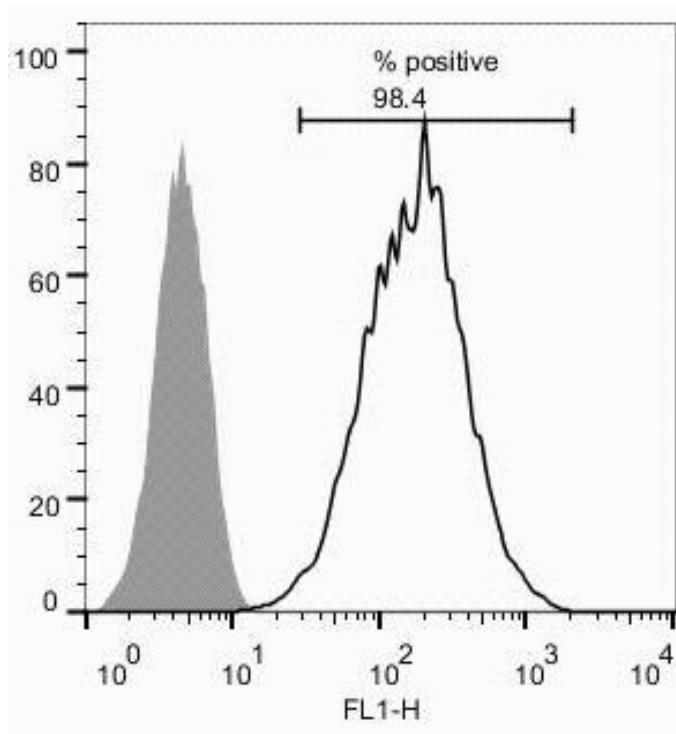
Ratio **0 - 0.999** negative for mycoplasma

Ratio **1 – 1.3** Borderline Result (retest required)

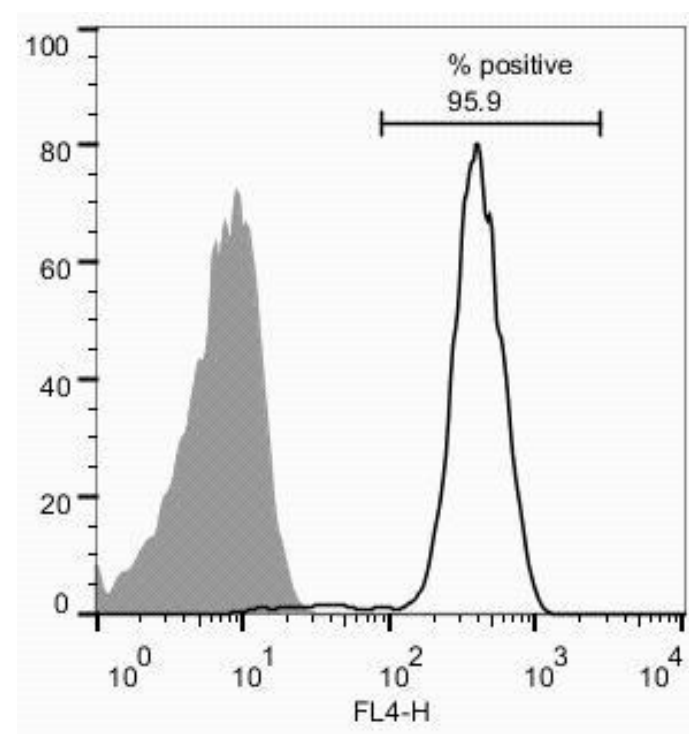
Ratio above **1.3** positive for mycoplasma

Flow cytometric analysis according to WP3 SOP 20 and 21 passage 12

Tra-1-60:



NANOG:



SNP analysis

according to WP3 SOP Preparation of DNA and RNA samples for Illumina arrays

- Passage 12
- Identity to parent fibroblasts confirmed
- Karyotype abnormalities: none detected For details and raw data see StemDB