

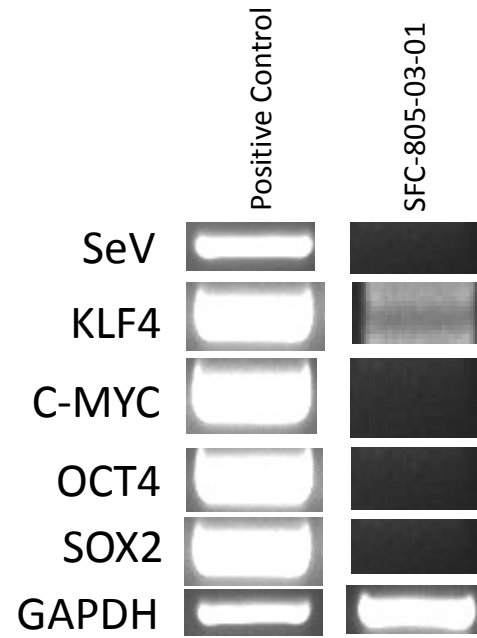
Certificate of analysis

SFC-805-03-01

Source of fibroblasts

SF805 fibroblasts delivered from Oxford April 2013

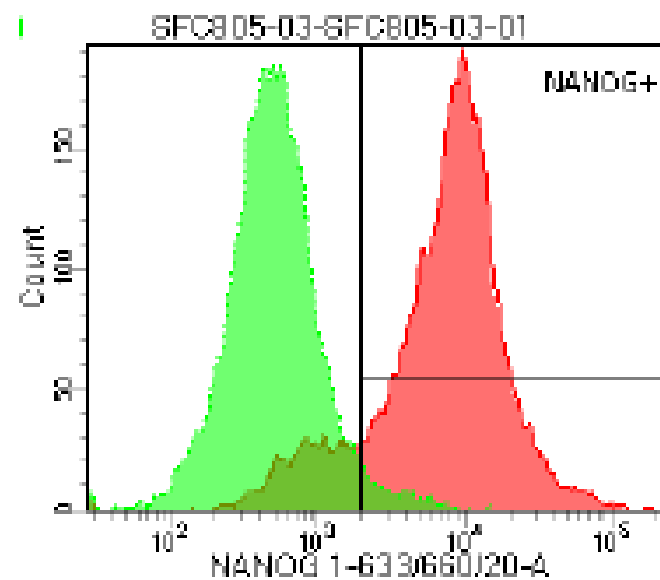
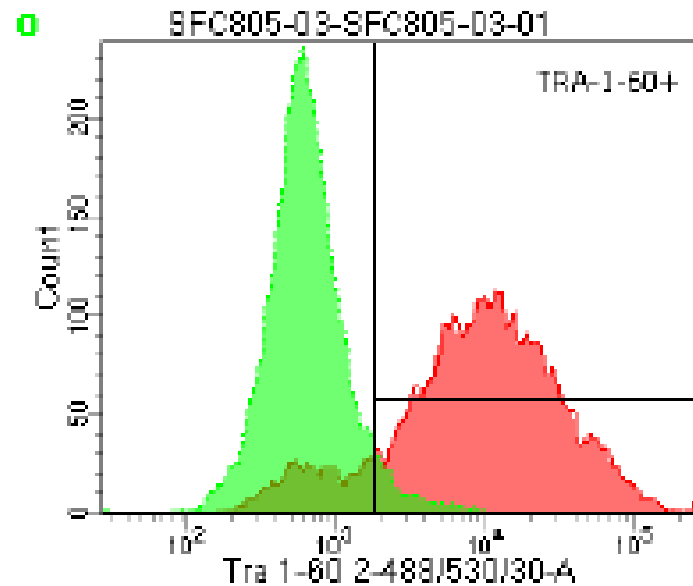
Sendai Clearance



Flow cytometric analysis

TRA-1-60: 85.8%

NANOG: 85.2%



CytoSNP analysis

Identity to parent fibroblasts

- Confirmed

Karyotype abnormalities

- Pass: minor allelic imbalance Chr6 also present in parent fibroblasts

Notes

Frozen with EDTA

Clone prone to differentiation if the well gets confluent

Recommended for passage at day 4 of culture